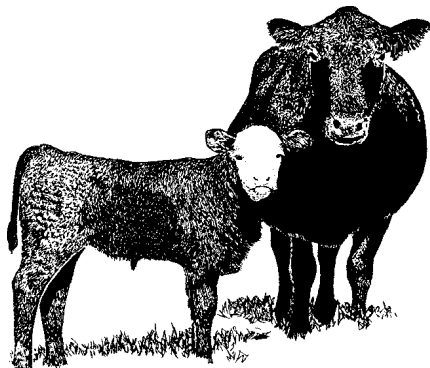


# HAWAII CATTLE

January 1



HAWAII  
AGRICULTURAL  
STATISTICS  
SERVICE



Hawaii Department of Agriculture  
Agricultural Development Division

U.S. Department of Agriculture

1428 S King St.  
Honolulu, HI 96814-2512

Phone (808) 973-9588  
FAX (808) 973-2909

Frequency: Annual

Release: February 12, 2004

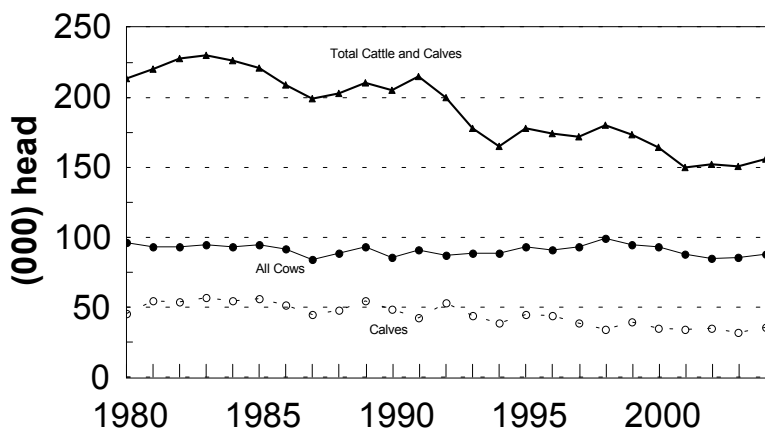
## INVENTORY 3 PERCENT ABOVE A YEAR AGO

According to the *Hawaii Agricultural Statistics Service*, the total number of cattle and calves on Hawaii's ranches on January 1, 2004 was **156,000** head, 5,000 above the revised January 1, 2003 inventory. Slightly improved weather conditions helped to generate an increase in forage feed for the animals.

### Highlights

- Beef cows - 82,000 head - up 3,000
- Milk cows - 6,000 head - down 1,000
- Heifers 500 pounds and over
  - Beef replacements - 12,000 head - unchanged
  - Milk replacements - 2,000 head - down 1,000
  - Other heifers - 6,000 head - unchanged
- Steers - 7,000 head - unchanged
- Bulls - 5,000 head - unchanged
- Calves - 36,000 head - up 4,000

**JANUARY 1 CATTLE INVENTORY**  
State of Hawaii, 1980-2004



HASS (2/04)

### Total Marketings Slightly Lower

Cattle and calf marketings totaled 55,000 head during 2003, a decrease of 3,000 head from the revised 2002 marketings. The bulk of marketings continued to be exports of cattle and calves to the mainland west coast. Out-of-State shipments totaled 44,000 head during 2003, an increase of 2,000 from the previous year.

### Calf Crop Higher

The 2003 calf crop for Hawaii is estimated at 66,000 head, 3,000 more than a year ago, but unchanged from two years ago.

**CATTLE AND CALVES: January 1 inventory by sex classes and weight, 2000-2004**

Year	All cattle and calves	All cows and heifers that have calved			Heifers 500 pounds and over				Steers 500 lbs. and over	Bulls 500 lbs. and over	Steers, heifers, and bulls under 500 lbs.
		Total	Beef cows	Milk cows	Total	Beef cow replacements	Milk cow replacements	Other			
1,000 head											
<b>STATE <sup>1</sup></b>											
2000	164	93	84	9	24	14	4	6	8	4	35
2001	150	88	81	7	18	10	3	5	6	4	34
2002	152	85	78	7	20	10	3	7	8	4	35
2003	151	86	79	7	21	12	3	6	7	5	32
<b>2004</b>	<b>156</b>	<b>88</b>	<b>82</b>	<b>6</b>	<b>20</b>	<b>12</b>	<b>2</b>	<b>6</b>	<b>7</b>	<b>5</b>	<b>36</b>

\* = Less than 50. <sup>1</sup> State totals may not add due to rounding.

**CATTLE AND CALVES: Inventory and disposition, State of Hawaii, 1999-2003**

Year	Inventory beginning January 1	Calf crop	Inshipments	Marketings	Farm slaughter	Deaths	Inventory January 1 following year
1,000 head							
1999	173	73	*	74	1	7	164
2000	164	69	*	73	1	9	150
2001	150	66	*	59	*	5	152
2002	152	63	*	58	1	5	151
<b>2003</b>	<b>151</b>	<b>66</b>	<b>*</b>	<b>55</b>	<b>1</b>	<b>5</b>	<b>156</b>

\* = Less than 500.

**CATTLE AND CALVES: Exports, 1999-2003**

Year	Total Export	Cattle <sup>1</sup>	Calves <sup>2</sup>	Steers	Heifers
1,000 head					
1999	57	4	53	33	24
2000	51	5	46	30	21
2001	46	4	42	27	19
2002	42	4	38	25	17
<b>2003</b>	<b>44</b>	<b>3</b>	<b>41</b>	<b>25</b>	<b>19</b>

<sup>1</sup> Over 500 pounds. <sup>2</sup> Under 500 pounds.

# U.S. INVENTORY SECTION

## U.S. INVENTORY DOWN 1 PERCENT

All cattle and calves in the United States as of January 1, 2004, totaled 94.9 million head, 1 percent below the 96.1 million on January 1, 2003.

All cows and heifers that have calved, at 41.9 million, were down 1 percent from the 42.1 million on January 1, 2003.

- Beef cows – 32.86 million head, down slightly
- Milk cows – 8.99 million head, down 2 percent
- All Heifers weighing 500 pounds and over
  - Beef cow replacement heifers – 5.52 million head, down 2 percent
  - Milk cow replacement heifers – 4.02 million head, down 2 percent
  - Other heifers – 9.80 million head, down 1 percent
- Steers weighing 500 pounds and over – 16.3 million head, down 2 percent
- Bulls weighing 500 pounds and over – 2.21 million head, down 2 percent
- Calves weighing under 500 pounds – 15.2 million head, down 2 percent
- Cattle and calves on feed for slaughter in all feedlots – 13.8 million head, down 4 percent

## U.S. CALF CROP DOWN 1 PERCENT

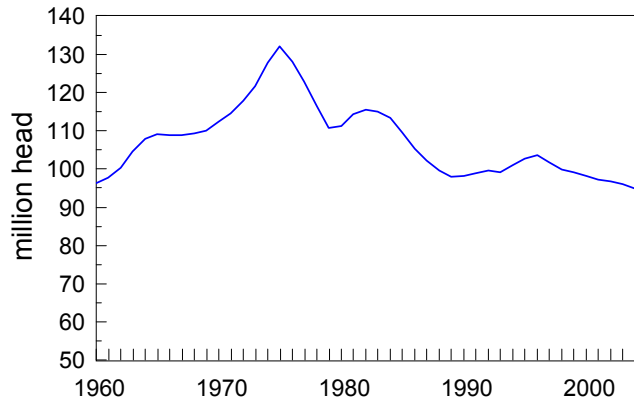
The 2003 calf crop was estimated at 37.9 million head, down 1 percent from both 2002. Calves born during the first half of the year are estimated at 27.7 million, down 1 percent from 2002.

**Cattle and Calves: Number by Class and Calf Crop, United States,  
January 1, 2002-2004**

Class	2002	2003	2004	2004 as % of 2003
		1,000 head		percent
Cattle and Calves	<b>96,704</b>	<b>96,100</b>	<b>94,882</b>	<b>99</b>
Cows and Heifers That Have Calved	42,229	42,125	41,851	99
Beef Cows	33,118	32,983	32,860	100
Milk Cows	9,112	9,142	8,991	98
Heifers 500 Pounds and Over	19,678	19,628	19,341	99
For Beef Cow Replacement	5,561	5,624	5,517	98
For Milk Cow Replacement	4,060	4,114	4,020	98
Other Heifers	10,057	9,891	9,804	99
Steers 500 Pounds and Over	16,790	16,554	16,280	98
Bulls 500 Pounds and Over	2,244	2,248	2,206	98
Calves Under 500 Pounds	15,763	15,545	15,204	98
Cattle on Feed	13,860	13,220	13,811	104
	2001	2002	2003	2003 as % of 2002
Calf Crop	38,280	38,224	37,903	99

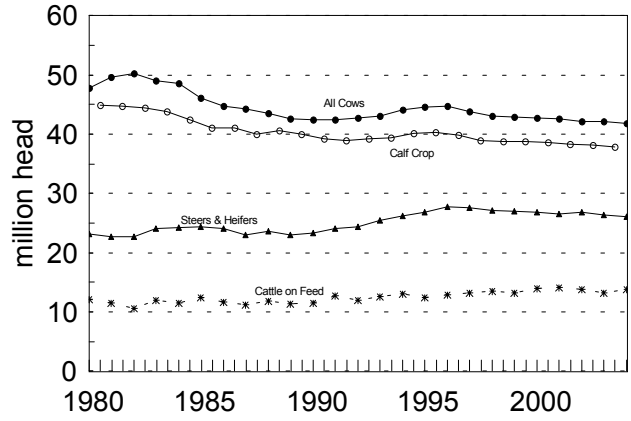
SOURCE: *Cattle*, January 30, 2004, National Agricultural Statistics Service (NASS), Agricultural Statistics Board, U.S. Department of Agriculture.

**January 1, U.S. Cattle Inventory**



HASS (2/02)

**U.S. Cattle**  
Comparison by category, 1980 - 2004



DONALD A. MARTIN  
State Agricultural Statistician

NILS K. MORITA  
Research Statistician