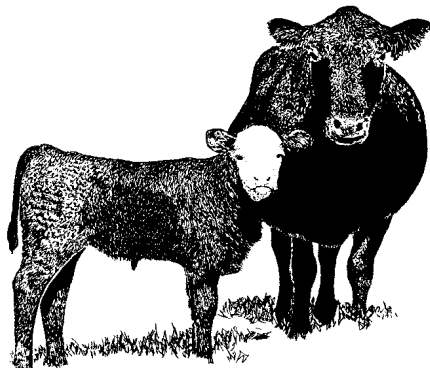


HAWAII CATTLE

January 1



HAWAII
AGRICULTURAL
STATISTICS



Hawaii Department of Agriculture
Agricultural Development Division

U.S. Department of Agriculture

1428 S King St.
Honolulu, HI 96814-2512

Phone (808) 973-9588
FAX (808) 973-2909

Frequency: Annual

Release: March 16, 2005

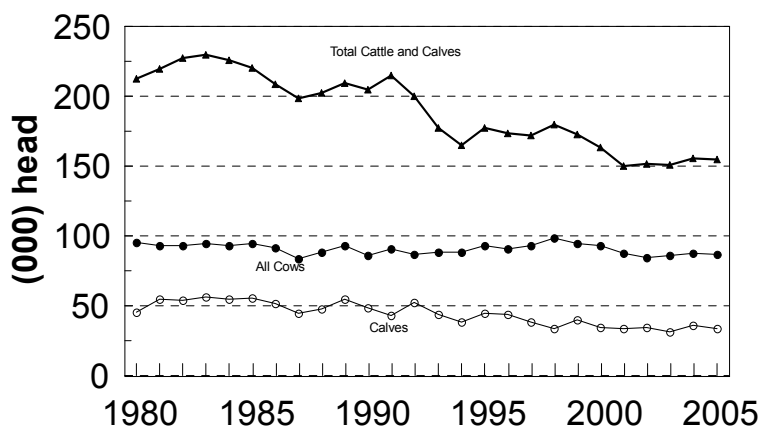
INVENTORY DOWN 1 PERCENT FROM A YEAR AGO

According to the *Hawaii Agricultural Statistics*, the total number of cattle and calves on Hawaii's ranches on January 1, 2005 was **155,000** head, 1,000 below January 1, 2004, but 4,000 head more than January 1, 2003. Slightly improved weather conditions helped to generate an increase in forage feed for the animals.

Highlights

- Beef cows - 81,300 head - down 900
- Milk cows - 5,700 head - down 700
- Heifers 500 pounds and over
 - Beef replacements - 15,000 head - up 3,000
 - Milk replacements - 2,000 head - unchanged
 - Other heifers - 5,000 head - down 1,000
- Steers - 7,000 head - unchanged
- Bulls - 5,000 head - unchanged
- Calves - 34,000 head - down 2,000

JANUARY 1 CATTLE INVENTORY State of Hawaii, 1980-2005



HAS (3/05)

Total Marketings Higher

Cattle and calf marketings totaled 58,000 head during 2004, an increase of 3,000 head from 2003's marketings. The bulk of marketings continued to be exports of cattle and calves to the mainland west coast. Out-of-State shipments totaled 42,000 head during 2004, a decrease of 2,000 from the previous year.

Calf Crop Lower

The 2004 calf crop for Hawaii is estimated at 63,000 head, 3,000 less than a year ago, but unchanged from two years ago.

**CATTLE AND CALVES: January 1 inventory by sex classes and weight,
State of Hawaii, 2001-2005**

Year	All cattle and calves	All cows and heifers that have calved			Heifers 500 pounds and over				Steers 500 lbs. and over	Bulls 500 lbs. and over	Steers, heifers, and bulls under 500 lbs.
		Total	Beef cows	Milk cows	Total	Beef cow replacements	Milk cow replacements	Other			
1,000 head											
2001	150	88	81	7	18	10	3	5	6	4	34
2002	152	85	78	7	20	10	3	7	8	4	35
2003	151	86	79	7	21	12	3	6	7	5	32
2004	156	88	82	6	20	12	2	6	7	5	36
2005	155	87	81.3	5.7	22	15	2	5	7	5	34

* = Less than 50.

CATTLE AND CALVES: Inventory and disposition, State of Hawaii, 2000-2004

Year	Inventory beginning January 1	Calf crop	Inshipments	Marketings	Farm slaughter	Deaths	Inventory January 1 following year
1,000 head							
2000	164	69	*	73	1	9	150
2001	150	66	*	59	*	5	152
2002	152	63	*	58	1	5	151
2003	151	66	*	55	1	5	156
2004	156	63	*	58	1	5	155

* = Less than 500.

CATTLE AND CALVES: Exports, 2000-2004

Year	Total Export	Cattle ¹	Calves ²	Steers	Heifers
1,000 head					
2000	51	5	46	30	21
2001	46	4	42	27	19
2002	42	4	38	25	17
2003	44	3	41	25	19
2004	42	9	33	25	17

¹ Over 500 pounds. ² Under 500 pounds.

U.S. INVENTORY SECTION

U.S. INVENTORY DOWN 1 PERCENT

All cattle and calves in the United States as of January 1, 2005, totaled 95.8 million head, 1 percent above the 94.9 million on January 1, 2004.

All cows and heifers that have calved, at 42.1 million, were up 1 percent from the 41.9 million on January 1, 2004.

- Beef cows – 33.06 million head, up 1 percent
- Milk cows – 9.01 million head, up slightly
- All Heifers weighing 500 pounds and over
 - Beef cow replacement heifers – 5.75 million head, up 4 percent
 - Milk cow replacement heifers – 4.13 million head, up 3 percent
 - Other heifers – 9.79 million head, down slightly
- Steers weighing 500 pounds and over – 16.5 million head, up 1 percent
- Bulls weighing 500 pounds and over – 2.22 million head, up 1 percent
- Calves weighing under 500 pounds – 15.4 million head, up 1 percent
- Cattle and calves on feed for slaughter in all feedlots – 13.7 million head, down slightly

U.S. CALF CROP DOWN 1 PERCENT

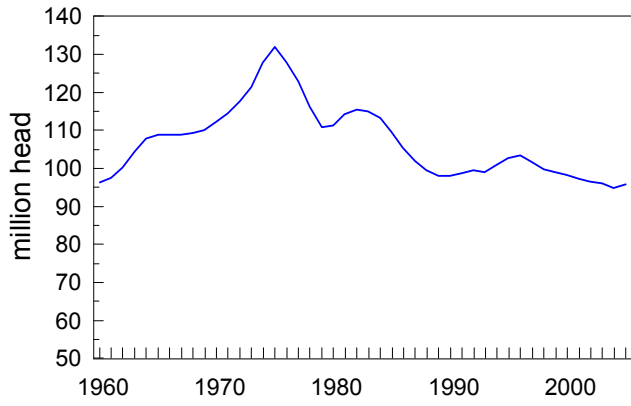
The 2004 calf crop was estimated at 37.6 million head, down 1 percent from 2003. Calves born during the first half of the year are estimated at 27.4 million, down 1 percent from 2003.

**Cattle and Calves: Number by Class and Calf Crop, United States,
January 1, 2003-2005**

Class	2003	2004	2005	2005 as % of 2004
		1,000 head		percent
Cattle and Calves	96,100	94,888	95,848	101
Cows and Heifers That Have Calved	42,125	41,851	42,060	101
Beef Cows	32,983	32,861	33,055	101
Milk Cows	9,142	8,990	9,005	100
Heifers 500 Pounds and Over	19,628	19,345	19,673	102
For Beef Cow Replacement	5,624	5,518	5,746	104
For Milk Cow Replacement	4,114	4,020	4,133	103
Other Heifers	9,891	9,806	9,793	100
Steers 500 Pounds and Over	16,554	16,277	16,511	101
Bulls 500 Pounds and Over	2,248	2,206	2,219	101
Calves Under 500 Pounds	15,545	15,210	15,385	101
Cattle on Feed	13,220	13,813	13,749	100
	2002	2003	2004	2004 as % of 2003
Calf Crop	38,224	37,903	37,625	99

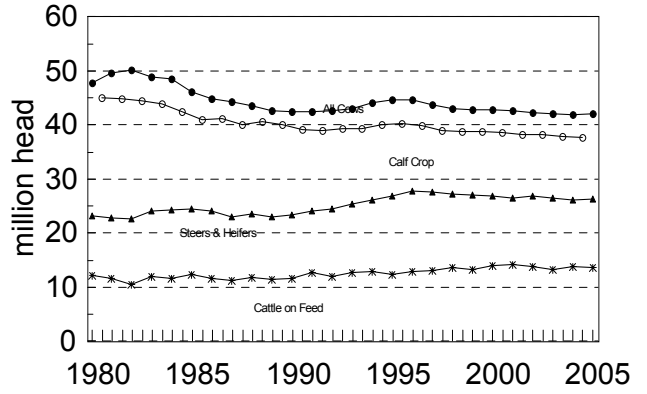
SOURCE: *Cattle*, January 30, 2004, National Agricultural Statistics Service (NASS), Agricultural Statistics Board, U.S. Department of Agriculture.

January 1, U.S. Cattle Inventory



HAS (3/05)

U.S. Cattle
Comparison by category, 1980 - 2005



HAS (3/05)

MARK E. HUDSON
Director

NILS K. MORITA
Research Statistician