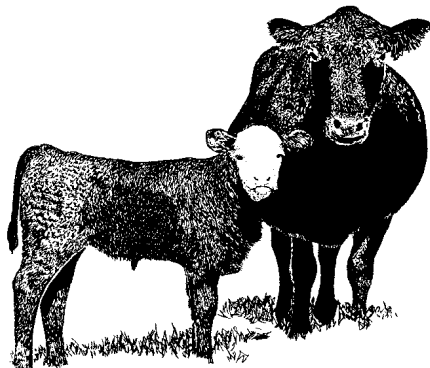


HAWAII CATTLE

January 1



NASS

FACT FINDERS FOR AGRICULTURE
UNITED STATES DEPARTMENT OF AGRICULTURE

National Agricultural Statistics Service
USDA, NASS, Hawaii Field Office
1428 South King Street
Honolulu, HI 96814-2512
☎ Oahu 1 - (808) 973-9588
☎ Toll free PH: 1 - (800) 804-9514
FAX: 1 - (808) 973-2909
Internet Web Site <http://www.nass.usda.gov/hi>

Frequency: Annual

Release: February 21, 2006

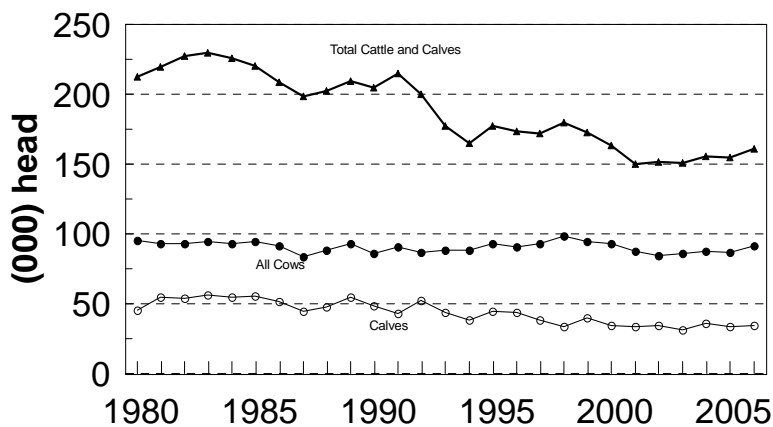
INVENTORY UP 4 PERCENT FROM A YEAR AGO

According to the *USDA, NASS, Hawaii Field Office*, the total number of cattle and calves on Hawaii's ranches on January 1, 2006 was **161,000** head, 6,000 above January 1, 2005, and 5,000 head more than January 1, 2004. Improved weather conditions helped to generate an increase in forage feed for the animals.

Highlights

- Beef cows - 87,400 head - up 6,100
- Milk cows - 4,600 head - down 1,100
- Heifers 500 pounds and over
 - Beef replacements - 15,000 head - unchanged
 - Milk replacements - 2,000 head - unchanged
 - Other heifers - 5,000 head - unchanged
- Steers - 7,000 head - unchanged
- Bulls - 5,000 head - unchanged
- Calves - 35,000 head - up 1,000

JANUARY 1 CATTLE INVENTORY
State of Hawaii, 1980-2006



HAS (2/06)

Total Marketings Higher

Cattle and calf marketings totaled 54,000 head during 2005, a decrease of 4,000 head from 2004's marketings. The bulk of marketings continued to be exports of cattle and calves to the mainland west coast. Out-of-State shipments totaled 42,000 head during 2005, 1,000 fewer than from the previous year.

Calf Crop Lower

The 2005 calf crop for Hawaii is estimated at 66,000 head, 3,000 above a year ago, but unchanged from two years ago.

**CATTLE AND CALVES: January 1 inventory by sex classes and weight,
State of Hawaii, 2002-2006**

Year	All cattle and calves	All cows and heifers that have calved			Heifers 500 pounds and over				Steers 500 lbs. and over	Bulls 500 lbs. and over	Steers, heifers, and bulls under 500 lbs.
		Total	Beef cows	Milk cows	Total	Beef cow replacements	Milk cow replacements	Other			
1,000 head											
2002	152	85	78	7	20	10	3	7	8	4	35
2003	151	86	79	7	21	12	3	6	7	5	32
2004	156	88	82	6	20	12	2	6	7	5	36
2005	155	87	81.3	5.7	22	15	2	5	7	5	34
2006	161	92	87.4	4.6	22	15	2	5	7	5	35

* = Less than 50.

CATTLE AND CALVES: Inventory and disposition, State of Hawaii, 2001-2005

Year	Inventory beginning January 1	Calf crop	Inshipments	Marketings	Farm slaughter	Deaths	Inventory January 1 following year
1,000 head							
2001	150	66	*	59	*	5	152
2002	152	63	*	58	1	5	151
2003	151	66	*	55	1	5	156
2004	156	63	*	58	1	5	155
2005	155	66	*	54	1	5	161

* = Less than 500.

CATTLE AND CALVES: Exports, 2001-2005

Year	Total Export	Cattle ¹	Calves ²	Steers	Heifers
1,000 head					
2001	46	4	42	27	19
2002	42	4	38	25	17
2003	44	3	41	25	19
2004	43	9	34	26	17
2005	42	5	37	24	18

¹ Over 500 pounds. ² Under 500 pounds.

U.S. INVENTORY SECTION

U.S. INVENTORY UP 2 PERCENT

All cattle and calves in the United States as of January 1, 2006, totaled 97.1 million head, 2 percent above the 95.4 million on January 1, 2005.

All cows and heifers that have calved, at 42.3 million, were up 1 percent from the 41.9 million on January 1, 2005.

- Beef cows – 33.3 million head, up 1 percent
- Milk cows – 9.06 million head, up percent
- All Heifers weighing 500 pounds and over
 - Beef cow replacement heifers – 5.9 million head, up 4 percent
 - Milk cow replacement heifers – 4.28 million head, up 4 percent
 - Other heifers – 9.8 million head, up slightly
- Steers weighing 500 pounds and over – 16.9 million head, up 3 percent
- Bulls weighing 500 pounds and over – 2.26 million head, up 2 percent
- Calves weighing under 500 pounds – 15.6 million head, up 2 percent
- Cattle and calves on feed for slaughter in all feedlots – 14.1 million head, up 3 percent

U.S. CALF CROP UP 1 PERCENT

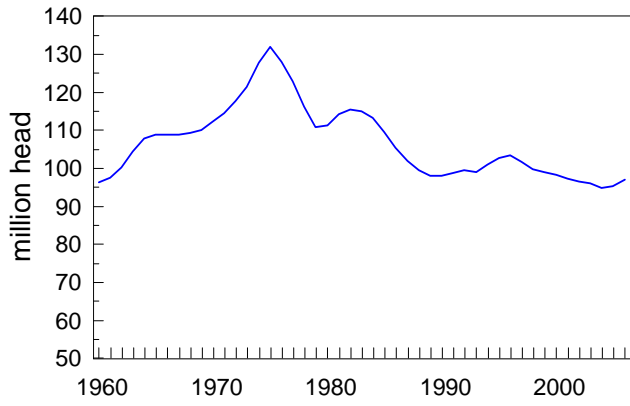
The 2005 calf crop was estimated at 37.8 million head, up 1 percent from 2004. Calves born during the first half of the year are estimated at 27.4 million, up slightly from 2004.

**Cattle and Calves: Number by Class and Calf Crop, United States,
January 1, 2004-2006**

Class	2004	2005	2006	2006 as % of 2005
		1,000 head		percent
Cattle and Calves	94,888	94,438	97,102	102
Cows and Heifers That Have Calved	41,851	41,920	42,311	101
Beef Cows	32,861	32,915	33,253	101
Milk Cows	8,990	9,005	9,058	101
Heifers 500 Pounds and Over	19,345	19,573	19,978	102
For Beef Cow Replacement	5,518	5,691	5,905	104
For Milk Cow Replacement	4,020	4,118	4,278	104
Other Heifers	9,806	9,763	9,795	100
Steers 500 Pounds and Over	16,277	16,476	16,923	103
Bulls 500 Pounds and Over	2,206	2,219	2,263	102
Calves Under 500 Pounds	15,210	15,250	15,626	102
Cattle on Feed	13,813	13,745	14,132	103
	2003	2004	2005	2005 as % of 2004
Calf Crop	37,903	37,505	37,780	101

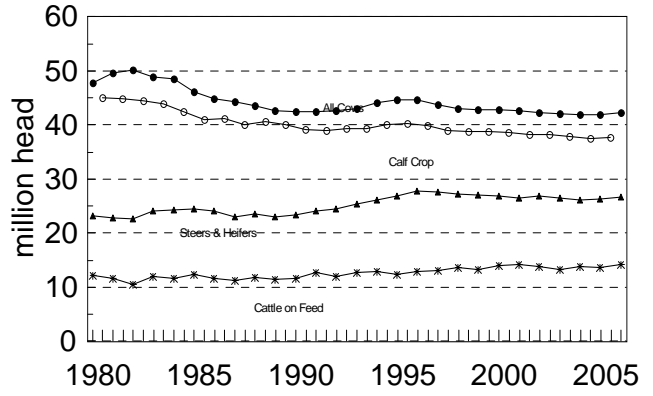
SOURCE: *Cattle*, January 27, 2006, National Agricultural Statistics Service (NASS), Agricultural Statistics Board, U.S. Department of Agriculture.

January 1, U.S. Cattle Inventory



HAS (2/06)

U.S. Cattle
Comparison by category, 1980 - 2006



HAS (2/06)

MARK E. HUDSON
Director

NILS K. MORITA
Research Statistician