



February 2012

Cattle: January Inventory Down 0.7 Percent

In cooperation with

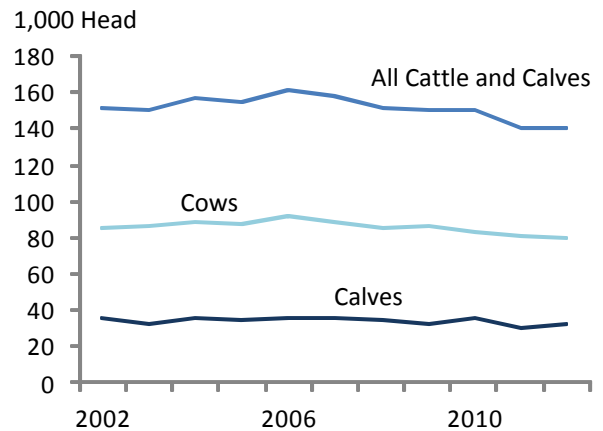


The total number of cattle and calves on Hawaii's ranches as of January 1, 2012 was estimated at 140,000 head, down 1,000 head as compared to the previous year's January inventory.

Small amounts of precipitation throughout 2011 led to prolonged drought coupled with reduced forage and pasture conditions. These conditions in turn coincided with decreased herd numbers, and increased operating costs to the ranchers for feeding and watering their cattle.

All cows and heifers that have calved, at 80,000 head, indicate a decline of 1 percent from last year. **Beef cows**, which constitute 56 percent of Hawaii's total herd with 78,100 head, also register a reduction of 1 percent as compared to the previous year.

**CATTLE: January 1 Inventory
State of Hawaii, 2001-2011**



Milk cow numbers dropped 5 percent from a year ago, and were estimated at 1,900 head.

Heifers weighing 500 pounds or more amounted to 17,000 head on January 1, 2012, unchanged from the previous year's estimate. The number of **beef cow replacements** (heifers weighing 500 pounds or more) was 10,000 head, a decrease of 9 percent from last year. **Other heifers** (greater than 500 pounds) increased by 1,000 head, or 20 percent, from a year ago. ■

Inside this issue:

Cattle 1-3

Hogs 4

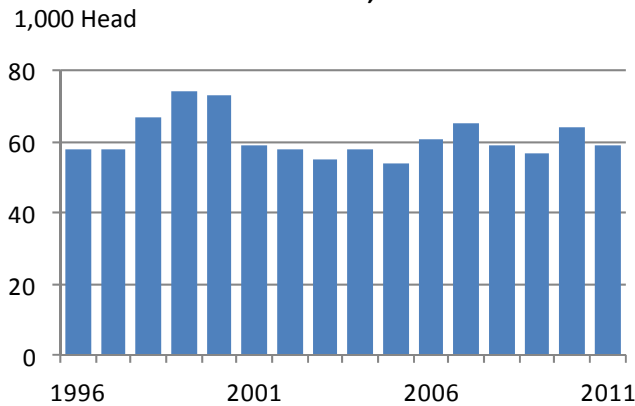
Coffee..... 5

Taro 6

CATTLE AND CALVES: January 1 Inventory by Sex, Class, and Weight, State of Hawaii, 2008-2012

Year	All cattle and calves	All cows and heifers that have calved			Heifers 500 pounds and over				Steers 500 lbs. and over	Bulls 500 lbs. and over	Steers, heifers, and bulls under 500 lbs.
		Total	Beef cows	Milk cows	Total	Beef cow replacements	Milk cow replacements	Other			
1,000 head											
2008	152	85	82.7	2.3	20	14	1	5	8	5	34
2009	150	86	84.4	1.6	19	13	1	5	8	5	32
2010	151	83	81.2	1.8	19	12	1	6	8	5	36
2011	141	81	79.0	2.0	17	11	1	5	8	5	30
2012	140	80	78.1	1.9	17	10	1	6	6	5	32

**CATTLE AND CALVES: Marketings
State of Hawaii, 1996-2011**



Cattle Marketings Down 8 Percent

The total **cattle marketings** for 2011 are estimated at 60,000 head, a reduction of 8 percent compared to 2010. **Farm slaughter** remained constant from the previous year at 2,000 head. All **cattle and calf deaths** totaled 5,000 head in 2011, a 44 percent decrease from 2010. ■

2011 Calf Crop Consistent

The 2011 calf crop was estimated at 65,000 head, remaining constant since January 2006. ■

CATTLE AND CALVES: Inventory and Disposition, State of Hawaii, 2007-2011

Year	Inventory beginning January 1	Calf crop	Inshipments	Marketings	Farm slaughter	Deaths	Inventory January 1 following year
1,000 head							
2007	158	65	*	65	1	5	152
2008	152	65	*	59	1	7	150
2009	150	65	*	57	1	6	151
2010	151	65	*	65	1	9	141
2011	141	65	*	60	1	5	140

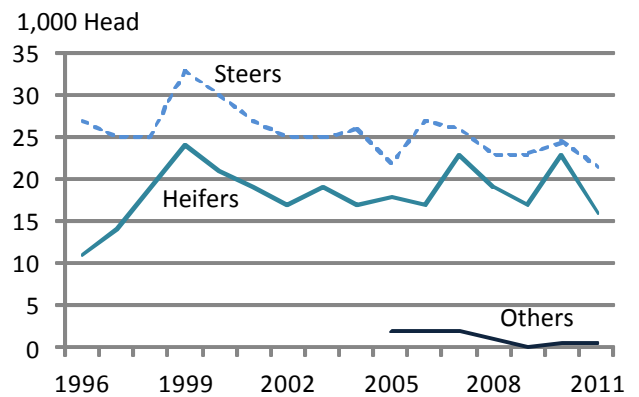
* = Less than 500.

Exports Down 21 Percent

A grand total of 38,000 head of cattle were exported in 2011, a reduction of 10,000 head or 21 percent over last year's total. **Calves** (animals weighing less than 500 pounds) accounted for the 98.7 percent of 2011 exports, or 37,500 head. This estimate is down 18 percent from 2010 calf exports.

When the 2011 cattle exports are classified by sex of the animal, **steers** accounted for 57 percent of the total or 21,500 head. This is a decline of 3,000 head or 12 percent as compared to the previous year. **Heifer** exports totaled 16,000 head and comprised 42 percent of 2011 cattle exports. This is a reduction of 30 percent from 2010. Exports of **other cattle**, mainly bulls and cows, totaled 500 head, unchanged from last year. ■

**CATTLE AND CALVES: Exports by Sex Class
State of Hawaii, 1996-2011**



CATTLE AND CALVES: Exports, State of Hawaii, 2007-2011

Year	Total	By Weight Category		By Sex Class		
		Cattle ¹	Calves ²	Steers	Heifers	Others
1,000 head						
2007	51	3.0	48.0	26.0	23	2.0
2008	43	2.0	41.0	23.0	19	1.0
2009	41	3.0	38.0	23.0	18	*
2010	48	2.0	46.0	24.5	23	.5
2011	38	.5	37.5	21.5	16	.5

NA = Not available. ¹ 500 pounds or more. ² 499 pounds or less. * Less than 500.

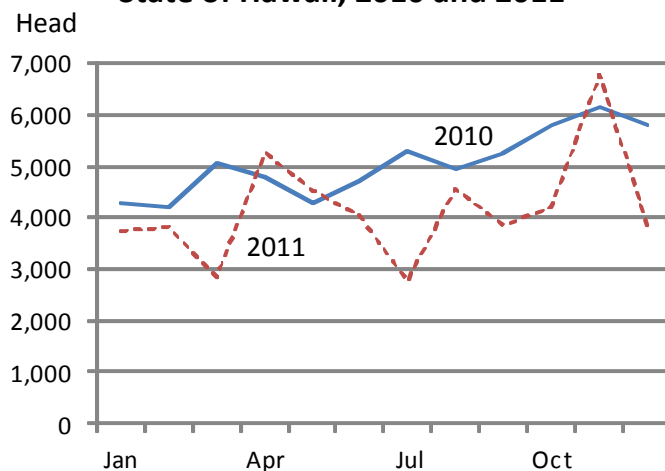
Cattle: Marketings for 2011 Down 17 Percent from Previous Year

Cattle marketings (sum of exports and local slaughter) totaled 50,150 head for the year of 2011, down 17 percent from 60,500 head in 2010. A total of 51,850 head of cattle were marketed in 2009.

Exports accounted for 76 percent of the year's total with steers making up 57 percent of the exported cattle. Local slaughter, accounting for the remaining 24 percent of marketings totaled 12,000 head by the year's end. This is a decrease of 4 percent from the previous year.

The average live weight of commercially slaughtered cattle in Hawaii during 2011 was 1,128 pounds, up 3 percent, or 33 pounds heavier than a year ago. ■

**CATTLE: Monthly Total Marketings
State of Hawaii, 2010 and 2011**



CATTLE: Number and Weights of Total Marketing, Exports, and Local Slaughter by Months, State of Hawaii, 2011 with 2010 Year-to-date Comparisons

Month	Total marketings ¹	Marketings							
		Exports				Commercial (local) slaughter ³			
		Total exports ²	Type of cattle		Average live weight	Number slaughter	Average live weight	Total live weight	Total dress weight ⁴
Steers	Heifers								
		Head			Pounds	Head	Pounds	— 1,000 pounds —	
January	3,750	2,750	1,600	1,150	458	1,000	1,112	1,107	608
February	3,800	2,700	1,500	1,100	493	1,100	1,121	1,191	654
March	2,850	1,750	1,050	650	432	1,100	1,139	1,275	700
April	5,250	4,250	2,200	1,950	419	1,000	1,123	1,151	632
May	4,520	3,520	1,900	1,400	408	1,000	1,129	1,112	610
June	4,050	2,950	1,650	1,250	512	1,100	1,126	1,217	668
July	2,750	1,750	1,000	750	443	1,000	1,128	1,073	589
August	4,550	3,550	2,000	1,500	508	1,000	1,143	1,183	649
September	3,850	2,850	1,700	1,100	462	1,000	1,123	1,135	623
October	4,200	3,200	1,900	1,300	429	1,000	1,147	1,128	619
November	6,780	5,980	3,700	2,250	431	800	1,119	923	507
December	3,800	2,900	1,400	1,500	448	900	1,095	1,039	570
Year-to-date ⁵ :									
2011	50,150	38,150	21,600	15,900	451	12,000	1,128	13,534	7,430
2010	60,500	48,000	24,700	22,850	410	12,500	1,095	13,710	7,527
Change	-17.1	-20.5	-12.6	-30.4	10.0	-4.0	3.0	-1.3	-1.3

¹ Sum of commercial (local) slaughter and exports. Totals may not add due to rounding. ² Cattle and calves shipped out-of-State include: steers, heifers, and all other classes. All other classes not shown separately, but are included in total exports. ³ Excludes non-inspected farm slaughter; includes custom slaughter. ⁴ Estimate based on 54.9 dressing percentage. ⁵ Includes revisions made to previous months.