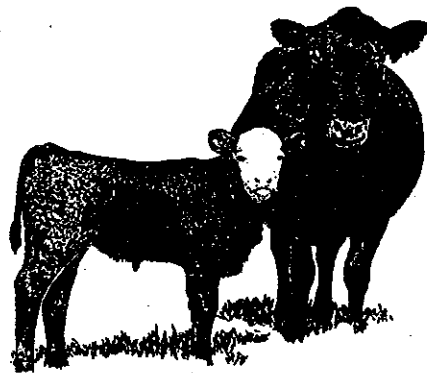


HAWAII CATTLE

January 1



HAWAII
AGRICULTURAL
STATISTICS
SERVICE



Hawaii Department of Agriculture
Agricultural Development Division

U.S. Department of Agriculture

P.O. Box 22159
Honolulu, HI 96823-2159

Phone (808) 973-9588
FAX (808) 973-2909

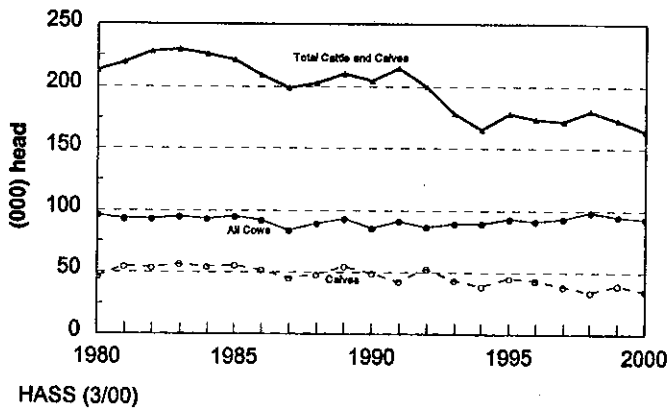
Frequency: Annual

Release: March 9, 2000

INVENTORY DECLINES 5 PERCENT FROM YEAR AGO

According to the *Hawaii Agricultural Statistics Service*, the total number of cattle and calves on Hawaii's ranches on January 1, 2000 was 164,000 head, 9,000 and 16,000 below a year earlier and two years ago, respectively. A prolonged dry spell and drought-like conditions in several major grazing areas of the State drastically reduced available forage feed supplies in 1999. As a result, many cattlemen were forced to reduce the size of their herds resulting in increased marketings, but fewer head on hand at the end of the year.

JANUARY 1 CATTLE INVENTORY
State of Hawaii, 1980-2000



Highlights

- Beef cows - 84,000 head - down 2,000
- Milk cows - 9,000 head - unchanged
- Heifers 500 pounds and over
 - Beef replacements - 14,000 head - down 2,000
 - Milk replacements - 4,000 head - unchanged
 - Other heifers - 6,000 head - up 1,000
- Steers - 8,000 head - unchanged
- Bulls - 4,000 head - down 1,000
- Calves - 35,000 head - down 5,000

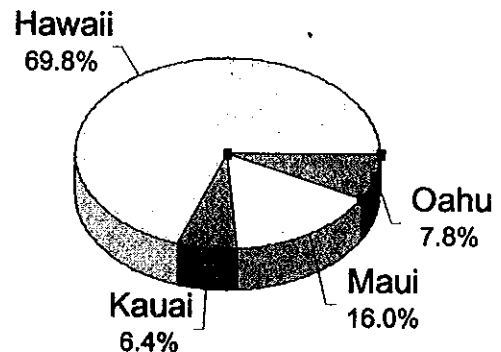
Inventory decline on all islands

The island of Hawaii, with nearly 70 percent of the State's inventory recorded a 5,400-head decline from a year earlier to 114,400 head on January 1, 2000. The county of Maui, islands of Maui/Molokai/Lanai, registered a 2,900-head drop in inventory to 26,300 head. The county of Kauai recorded the smallest decline in inventory of 100 head to 10,500 head. Honolulu county showed a 600-head decrease in inventory from a year ago to 12,800 head.

Total Marketings Higher

Cattle and calf marketings totaled 74,000 head during 1999, an increase of 7,000 head from the previous year. The bulk of marketings

CATTLE INVENTORY BY ISLANDS
January 1, 2000



HASS (3/00)

continued to be exports of cattle and calves to the west coast. Out-of-State shipments totaled 57,000 head during 1999, an increase of 13,000 from the previous year.

Below-normal rainfall continued throughout most of 1999 leaving many of the State's pastures dry and short of forage. Cattle prices continued off from year ago levels, but calf prices, exports, were up slightly. The shortage

of pasture feed and slightly higher calf prices, resulted in an increase in marketings to the west coast.

Calf Crop lower

The 1999 calf crop for Hawaii is estimated at 72,000 head, 1,000 and 5,000 below a year ago and two years ago, respectively.

CATTLE AND CALVES: January 1 inventory by sex classes and weight, by island, 1996-2000 ¹

Year	All cattle and calves	All cows and heifers that have calved			Heifers 500 pounds and over				Steers 500 lbs. and over	Bulls 500 lbs. and over	Steers, heifers, and bulls under 500 lbs.
		Total	Beef cows	Milk cows	Total	Beef cow replacements	Milk cow replacements	Other			

STATE ²

1996	174	91	81	10	27	15	4	8	7	5	44
1997	172	93	83	10	27	16	5	6	8	5	39
1998	180	97	88	9	28	16	4	8	10	5	40
1999	173	95	86	9	25	16	4	5	8	5	40
2000	164	93	84	9	24	14	4	6	8	4	35

Hawaii

1996	121.2	63.4	61.7	1.7	17.0	11.2	1.0	4.8	4.5	3.6	32.7
1997	119.1	63.8	62.0	1.8	17.8	12.5	1.4	3.9	4.7	3.9	28.9
1998	124.9	67.6	65.4	2.2	18.2	11.6	.8	5.8	6.0	3.5	29.6
1999	119.8	65.8	63.9	1.9	16.1	11.8	1.1	3.2	5.1	3.5	29.3
2000	114.4	65.4	63.4	2.0	16.5	10.9	1.4	4.2	5.2	3.0	24.3

Honolulu

1996	14.3	8.5	1.8	6.7	2.6	.3	2.0	.3	.3	.2	2.7
1997	13.1	7.7	1.4	6.3	2.7	.3	2.3	.1	.2	.2	2.3
1998	13.0	7.0	2.0	5.0	3.4	.9	2.3	.2	.3	.2	2.1
1999	13.4	7.2	2.0	5.2	3.2	.8	2.1	.3	.3	.2	2.5
2000	12.8	7.7	2.1	5.6	2.2	.4	1.6	.2	.2	.2	2.5

Kauai

1996	11.2	4.7	4.2	.5	2.3	.8	.8	.7	1.1	.4	2.7
1997	11.3	4.8	4.2	.6	2.5	.9	.7	.9	1.1	.3	2.6
1998	11.4	5.0	4.4	.6	2.2	.9	.4	.9	1.5	.4	2.3
1999	10.6	4.9	4.2	.7	1.8	.8	.3	.7	1.1	.3	2.5
2000	10.5	4.9	4.1	.8	1.8	.7	.2	.9	1.1	.3	2.4

Maui

1996	27.3	14.2	13.2	1.0	5.4	2.9	.4	2.1	1.4	.7	5.6
1997	28.5	16.7	15.8	.9	3.9	2.2	.5	1.2	1.8	.7	5.4
1998	30.7	17.6	16.6	1.0	4.1	2.4	.6	1.1	1.8	.8	6.4
1999	29.2	17.0	16.1	.9	4.2	2.4	.6	1.2	1.6	.7	5.7
2000	26.3	14.9	14.8	.1	3.5	2.1	.4	1.0	1.3	.5	6.1

* = Less than 50. ¹ 1995-1998 Revised. ² State totals may not add due to rounding.

CATTLE AND CALVES: Inventory and disposition, State of Hawaii, 1995-99

Year	Inventory beginning January 1	Calf crop	Inshipments	Marketings	Farm slaughter	Deaths	Inventory January 1 following year
1,000 head							
1995	178	74	*	66	1	11	174
1996	174	74	*	62	1	13	172
1997	172	77	*	58	1	10	180
1998	180	73	*	67	1	12	173
1999	173	72	*	74	*	7	164

* = Less than 500.

CATTLE AND CALVES: Exports, 1995-99

Year	Total Export	Cattle ¹	Calves ²	Steers	Heifers
1,000 head					
1995	50	2	48	35	15
1996	38	4	34	37	11
1997	39	5	34	25	14
1998	44	4	40	25	19
1999	57	4	53	33	24

¹ Over 500 pounds. ² Under 500 pounds.

U.S. INVENTORY SECTION

U.S. INVENTORY DOWN 1 PERCENT

All cattle and calves in the United States as of January 1, 2000, totaled 98.0 million head, 1 percent below the 99.1 million on January 1, 1999 and 2 percent below the 99.7 million two years ago.

All cows and heifers that have calved, at 42.7 million, were slightly below the 42.9 million on January 1, 1999 and 1 percent below the 43.1 million two years ago.

Cattle and Calves: Number by Class and Calf Crop, United States, January 1, 1998-2000

Class	1998	1999	2000	1999 as % of 2000
1,000 head				
Cattle and Calves	99,744	99,115	98,048	99
Cows and Heifers That Have Calved	43,084	42,878	42,734	100
Beef Cows	33,885	33,745	33,546	99
Milk Cows	9,199	9,133	9,188	101
Heifers 500 Pounds and Over	19,800	19,774	19,528	99
For Beef Cow Replacement	5,764	5,535	5,530	100
For Milk Cow Replacement	3,986	4,069	3,954	97
Other Heifers	10,051	10,170	10,045	99
Steers 500 Pounds and Over	17,189	16,891	16,652	99
Bulls 500 Pounds and Over	2,270	2,281	2,294	101
Calves Under 500 Pounds	17,401	17,290	16,840	97
	1997	1998	1999	1999 as % of 1998
Calf Crop	38,961	38,812	38,710	100

SOURCE: Cattle, January 28, 2000, National Agricultural Statistics Service (NASS), Agricultural Statistics Board, U.S. Department of Agriculture.

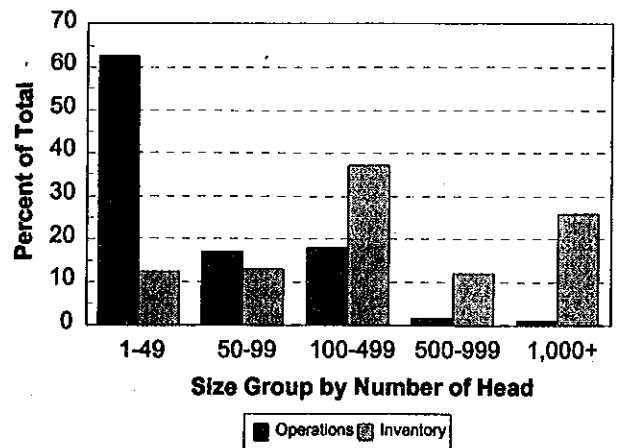
U.S. CALF CROP DOWN SLIGHTLY

The 1999 calf crop was estimated at 38.7 million head, down slightly from 1998. Calves born during the first half of the year are estimated at 28.5 million, the same as 1998 but down slightly from 1997.

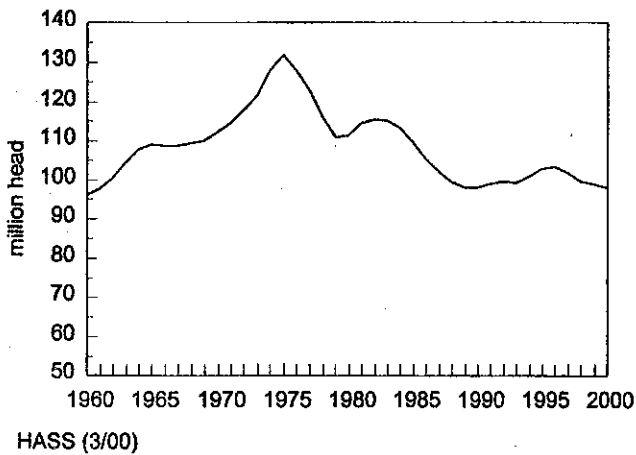
U.S. CATTLE OPERATIONS DOWN 2 PERCENT

The number of operations with cattle totaled 1,095,960 during 1999, down 2 percent from 1998 and 5 percent below 1997. Beef cow operations in 1999 were down 1 percent from 1998 and 3 percent below 1997.

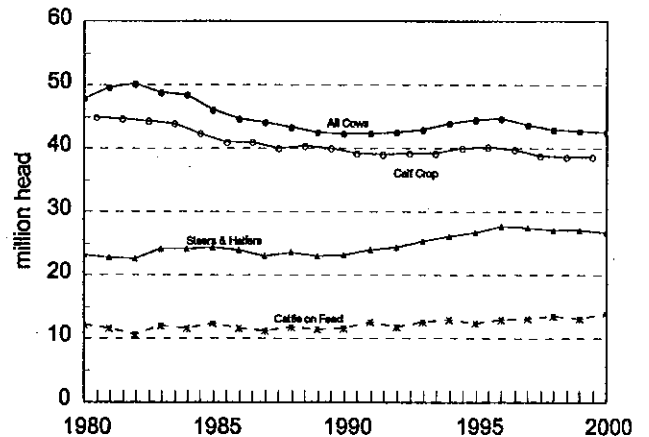
U.S. Size Group Comparison
Cattle Operations vs Cattle Inventory by Percent



January 1, U.S. Cattle Inventory



U.S. Cattle
Comparison by category, 1980 - 2000



DONALD A. MARTIN
State Agricultural Statistician

NILS K. MORITA
Research Statistician

U.S. Department of Agriculture
National Agricultural Statistics Service
P.O. Box 22159
Honolulu, Hawaii 96823-2159

BULK RATE
Postage and Fees Paid
**NATIONAL AGRICULTURAL
STATISTICS SERVICE**
Permit No. G-38

OFFICIAL BUSINESS
PENALTY FOR PRIVATE USE, \$300
Return Service Requested