



NATIONAL  
AGRICULTURAL  
STATISTICS  
SERVICE

# Hawaii Farm Facts

January 2010



In cooperation with



Department  
of Agriculture  
STATE OF HAWAII

## *2010 promises to be a challenging and exciting year for the Hawaii Agricultural Statistics Service*

We would like to welcome all of our readers and subscribers to the first edition of the Hawaii Farm Facts. The monthly edition of this publication will provide agricultural statistics that was gathered from farmers, ranchers, and agribusinesses during the course

of the year. Production and supplies of food and fiber, prices paid and received by farmers, farm labor and wages, and changes in the demographics of Hawaii producers are only a few examples.



### Inside this issue:

<i>Cattle: Monthly Slaughter and Exports</i>	2
<i>Hog Inventory</i>	3
<i>Top 20 Commodities</i>	4
<i>Farm Values</i>	4
<i>Diversified Agriculture Ranked By Value</i>	4
<i>Census Facts</i>	5

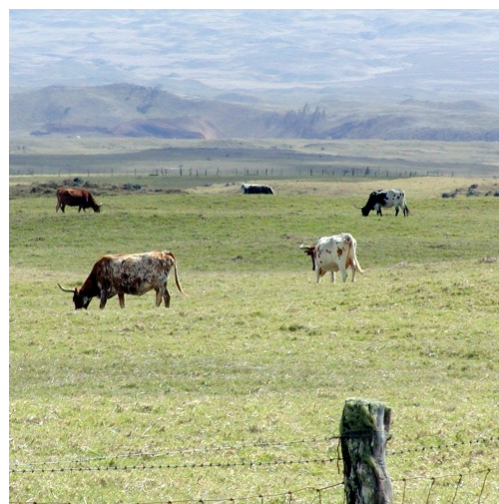
The Hawaii Agricultural Statistics Service (HASS) is committed to providing timely, accurate, and useful statistics in service to Hawaii's agriculture. To uphold our continuing commitment, HASS will:

- Report the facts on Hawaii agriculture, facts needed by people working in and depending upon agriculture.
- Provide objective and unbiased statistics that is fair and impartial to all market participants.
- Conduct the Census of Agriculture every five years, providing the only source of consistent, comparable, and detailed agricultural data for every county in Hawaii.
- Serve the needs of our data users and customers at a local level through our network of other government agencies and our cooperative relationship with universities and the Hawaii Department of Agriculture.
- Safeguard the privacy of farmers, ranchers, and other data providers with a guarantee that confidentiality and data security continue to be our top priorities.

## Cattle: Monthly Slaughter and Exports

Cattle marketings (sum of exports and local slaughter) totaled 4,350 head for November 2009, down 15 percent from October's total of 5,100 head. A 15 percent decrease in cattle exports and an 11 percent decline in commercial slaughter accounted for the drop in marketings.

Cumulative cattle marketings through November 2009 totaled 46,250 head, down 8 percent compared to a year ago. Cattle exports are down 9 percent so far this year compared to last year while local slaughter was down 5 percent from a year ago through November.



**CATTLE: Number and weights of total marketing, exports, and local slaughter by months, State of Hawaii, 2009 with 2008 year-to-date comparisons**

Month	Total marketings <sup>1</sup>	Marketings							
		Total exports <sup>2</sup>	Exports		Average live weight	Commercial (local) slaughter <sup>3</sup>			
			Type of cattle			Number slaughter	Average live weight	Total live weight	Total dress weight <sup>4</sup>
			Steers	Heifers					
		----- Head -----		Pounds	Head	Pounds	---- 1,000 pounds ----		
January	5,400	4,500	2,400	2,050	404	900	1,130	1,038	570
February	2,100	1,200	650	550	427	900	1,160	1,094	601
March	3,700	2,700	1,300	1,350	417	1,000	1,221	1,192	654
April	4,700	3,800	2,200	1,600	429	900	1,121	1,060	582
May	3,800	2,900	1,900	1,000	448	900	1,129	1,008	553
June	4,800	3,900	1,800	2,100	411	900	1,121	1,006	552
July	3,900	2,900	1,600	1,300	453	1,000	1,148	1,160	637
August	4,400	3,500	1,900	1,600	458	900	1,145	1,080	593
September	4,000	3,100	1,700	1,400	448	900	1,164	1,044	573
October	5,100	4,200	2,200	2,000	498	900	1,115	948	520
November	4,350	3,550	2,200	1,350	462	800	1,141	890	489
December									
Year-to-date <sup>5</sup> :									
2009	46,250	36,250	19,850	16,300	442	10,000	1,152	11,520	6,324
2008	50,500	40,000	21,000	18,100	431	10,500	1,139	12,018	6,598
Change	-8.4	-9.4	-5.5	-9.9	-1.8	-4.8	1.1	-4.1	-4.2

<sup>1</sup> Sum of commercial (local) slaughter and exports. Totals may not add due to rounding. <sup>2</sup> Cattle and calves shipped out-of-State include: steers, heifers, and all other classes. All other classes not shown separately, but are included in total exports. <sup>3</sup> Excludes non-inspected farm slaughter; includes custom slaughter. <sup>4</sup> Estimate based on 54.9 dressing percentage. <sup>5</sup> Includes revisions made to previous months.





**Top 20 commodities,  
State of Hawaii, 2007-2008<sup>1</sup>**

**Farm values, State of Hawaii, 1989-2008**

Commodity <sup>2</sup>	Rank		Value of production		Year	Sugar (unprocessed cane)	Pineapples (fresh equivalent)	Diversified agriculture <sup>1</sup>	Total <sup>2</sup>
	2007	2008	2007	2008					
	--- Number ---		--- 1,000 dollars ---				1,000 dollars		
Seed crops	1	1	140,710	<b>176,600</b>					
Sugarcane (unprocessed)	2	2	47,600	<b>44,200</b>	1989	210,300	98,310	276,438	585,048
Macadamia nuts	5	3	24,600	<b>33,500</b>	1990	213,800	106,365	275,789	595,954
Coffee	3	4	31,875	<b>29,580</b>	1991	174,900	107,775	268,707	551,382
Cattle	4	5	26,196	<b>24,305</b>	1992	153,700	102,100	264,427	520,227
Algae	7	6	10,941	<b>15,740</b>	1993	163,000	79,850	271,094	513,944
Papayas	6	7	13,094	<b>14,393</b>	1994	160,100	78,890	273,826	512,816
Eggs	12	8	7,428	<b>8,678</b>	1995	127,700	87,360	291,632	506,692
Bananas	8	9	10,496	<b>8,004</b>	1996	108,100	95,914	307,329	511,343
Basil	16	10	5,465	<b>6,755</b>	1997	85,500	91,721	327,484	504,705
Palms, potted	11	11	8,698	<b>6,664</b>	1998	87,300	92,776	329,886	509,962
Milk	10	12	9,673	<b>5,460</b>	1999	86,800	101,448	342,846	531,094
Sweetpotatoes	21	13	3,621	<b>4,780</b>	2000	62,200	101,530	358,170	521,900
Sod	17	14	4,515	<b>4,627</b>	2001	57,800	96,337	370,241	524,378
Dendrobiums, potted	14	15	5,092	<b>4,077</b>	2002	64,300	100,616	374,602	539,518
Dracaena, potted	13	16	6,010	<b>3,930</b>	2003	64,400	101,470	382,253	548,123
Anthuriums, cut	15	17	4,530	<b>3,736</b>	2004	61,500	83,104	407,453	552,057
Hogs	20	18	3,682	<b>3,359</b>	2005	58,900	79,288	444,597	582,785
Oncidiinae, potted	19	19	3,673	<b>3,084</b>	2006	50,200	73,652	455,738	579,590
Ginger, root	24	20	2,380	<b>2,880</b>	2007	47,600	<sup>3</sup>	<sup>3</sup>	577,999
					<b>2008</b>	<b>44,200</b>	<sup>3</sup>	<sup>3</sup>	<b>609,404</b>

<sup>1</sup> Pineapples, watermelons, and tomatoes not ranked due to disclosure of individual operations. <sup>2</sup> Floriculture categories include only growers with total sales of \$10,000 or more.

<sup>1</sup> Aquaculture included beginning 1993. <sup>2</sup> Includes all agricultural commodities. <sup>3</sup> Pineapples and diversified agriculture not shown separately to avoid disclosure of individual operations.

**Diversified agriculture ranked by value, State of Hawaii, 2007-2008**

Commodity	Rank		Value of production			Percent of diversified agriculture <sup>1</sup>	
	2007	2008	2007	2008	Year-to-year percent change	2007	2008
	--- Number ---		---- 1,000 dollars ----		----- Percent -----		
Seed crops	1	1	140,710	<b>176,600</b>	+26	31.8	<b>36.8</b>
Flowers and nursery products	2	2	108,710	<b>98,607</b>	-9	24.5	<b>20.5</b>
Vegetables and melons <sup>2</sup>	3	3	34,395	<b>36,632</b>	+7	7.7	<b>7.6</b>
Aquaculture	7	4	25,110	<b>34,650</b>	+38	5.7	<b>7.2</b>
Macadamia nuts	8	5	24,600	<b>33,500</b>	+36	5.6	<b>7.0</b>
Coffee	4	6	31,875	<b>29,580</b>	-7	7.2	<b>6.2</b>
Fruits (excluding pineapples)	5	7	30,592	<b>29,158</b>	-5	6.9	<b>6.1</b>
Cattle	6	8	26,196	<b>24,305</b>	-7	5.9	<b>5.0</b>
Eggs	10	9	7,428	<b>8,678</b>	+17	1.7	<b>1.8</b>
Milk	9	10	9,673	<b>5,460</b>	-44	2.2	<b>1.1</b>
Hogs	11	11	3,682	<b>3,359</b>	-9	.8	<b>.7</b>
Other livestock and crops			<sup>3</sup>	<sup>3</sup>			
Total			<sup>3</sup>	<sup>3</sup>		100.0	<b>100.0</b>

<sup>1</sup> Percentages are of displayed items only. <sup>2</sup> Includes ginger root and herbs. Beginning 2007, non-published vegetable commodities not included to avoid disclosure of individual operations, but included in total farm value. <sup>3</sup> Data not shown separately to avoid disclosure of individual operations but included in total farm value.

# 2007 CENSUS OF AGRICULTURE

## Hawaii Farms with Women Principal Operators

### Selected Highlights

Item	Farms	Quantity
<b>MARKET VALUE OF AGRICULTURAL PRODUCTS SOLD (\$1,000)</b>		
Total value of agricultural products sold	1,806	(D)
Value of crops including nursery and greenhouse	1,322	31,966
Value of livestock, poultry, and their products	317	(D)
<b>VALUE OF SALES BY COMMODITY GROUP (\$1,000)</b>		
Grains, oilseeds, dry beans, and dry peas	3	(D)
Tobacco	-	-
Cotton and cottonseed	-	-
Vegetables, melons, potatoes and sweet potatoes	180	(D)
Fruits, tree nuts, and berries	889	7,747
Nursery, greenhouse, floriculture, and sod	446	(D)
Cut Christmas trees and short rotation woody crops	11	37
Other crops and hay	41	(D)
Poultry and eggs	81	(D)
Cattle and calves	109	(D)
Milk and other dairy products from cows	1	(D)
Hogs and pigs	28	(D)
Sheep, goats, and their products	65	(D)
Horses, ponies, mules, burros, and donkeys	33	108
Aquaculture	8	321
Other animals and other animal products	55	228
<b>TOP CROP ITEMS (acres)</b>		
Macadamia nuts	253	(D)
Coffee	375	(D)
Floriculture crops, total	262	556
Vegetables harvested for sale	193	410
Bananas	306	202
<b>TOP LIVESTOCK INVENTORY ITEMS (number)</b>		
Layers	115	(D)
Cattle and calves	181	(D)
Hogs and pigs	36	3,108
Horses and ponies	237	1,666
Goats, all	90	1,241

### Operator Characteristics

Item	Quantity
<b>Primary occupation:</b>	
Farming	868
Other	938
<b>Days worked off farm:</b>	
None	479
Any	1,327
<b>Years on present farm:</b>	
2 years or less	131
3 to 4 years	186
5 to 9 years	466
10 years or more	1,023
<b>Age group:</b>	
Under 45 years	158
45 to 64 years	1,153
65 years and over	495
Average age of principal operator (years)	59.1

### Economic Characteristics

Item	Quantity
<b>Farms by value of sales:</b>	
Less than \$1,000	433
\$1,000 to \$2,499	357
\$2,500 to \$4,999	274
\$5,000 to \$9,999	282
\$10,000 to \$49,999	350
\$50,000 to \$99,999	47
\$100,000 to \$249,999	41
\$250,000 to \$499,999	12
\$500,000 or more	10
Total farm production expenses (\$1,000)	51,321
Average per farm (\$)	28,417
Net cash farm income of operation (\$1,000)	-3,006
Average per farm (\$)	-1,665
Value of agricultural products sold directly to individuals for human consumption (\$1,000)	1,258
Total organic product sales (\$1,000)	1,199
Total income from farm-related sources, gross before taxes and expenses (\$1,000)	5,040

See "Census of Agriculture, Volume 1, Geographic Area Series" for complete footnotes, explanations, definitions, and methodology.  
(D) Cannot be disclosed. (Z) Less than half of the unit shown.

## *Note from the Director* Mark E. Hudson

The cooperation we receive from the farmers and ranchers who respond to our many surveys is truly appreciated. Your continued cooperation makes these reports possible. Thanks also to the county Farm Service Agency Executive Directors who provide crop and weather information weekly. I would be remised if I did not thank the research and field statisticians that we lost due to the reduction in force within the Hawaii State Department of Agriculture. Their hard work, dedication, and service to Hawaii agriculture helped build the solid reputation we

have today. Their absence is noticeable as we lost over a hundred years of experience and because of our loss, 2010 promises to be a challenging year. The charge given to my staff is to operate more effectively and efficiently, to improve data quality and standardization, and to enhance the use of technology. These steps will streamline our functions that will be better prepared to face the challenges of increasing demand for agricultural statistics in a time when budget resources are decreasing. We encourage all readers and subscribers to provide

input on your vision as to what we can do to remain relevant and to continue to serve Hawaii's agriculture. Our goal is to continue to serve you and others in the agriculture sector by anticipating future challenges in agriculture's changing landscape.

May you enjoy this first of many editions of the Hawaii Farm Facts.



### **Visit us online!**

**All our publications are available online. Visit our website at [www.nass.usda.gov/hi](http://www.nass.usda.gov/hi).**

**You may also receive our publications, as well as nation-level and other state agricultural publications, free of charge direct to your email. Go to [www.nass.usda.gov](http://www.nass.usda.gov). Under the words "Receive reports by Email" located toward the right bottom of the page, click on either the "National" or "State" link and follow the instructions on the screen.**

**Also...**

