



February 2012

Cattle: January Inventory Down 0.7 Percent

In cooperation with

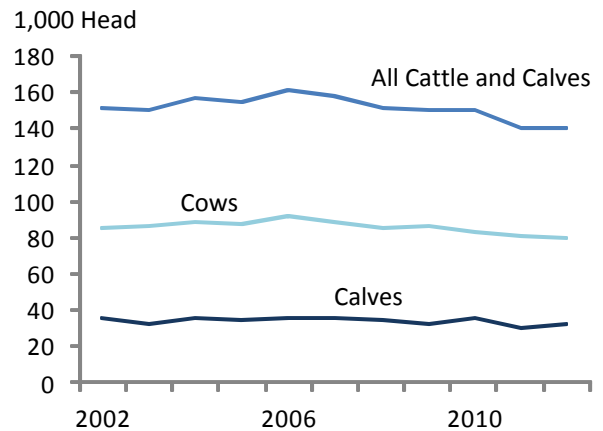


The total number of cattle and calves on Hawaii's ranches as of January 1, 2012 was estimated at 140,000 head, down 1,000 head as compared to the previous year's January inventory.

Small amounts of precipitation throughout 2011 led to prolonged drought coupled with reduced forage and pasture conditions. These conditions in turn coincided with decreased herd numbers, and increased operating costs to the ranchers for feeding and watering their cattle.

All cows and heifers that have calved, at 80,000 head, indicate a decline of 1 percent from last year. **Beef cows**, which constitute 56 percent of Hawaii's total herd with 78,100 head, also register a reduction of 1 percent as compared to the previous year.

**CATTLE: January 1 Inventory
State of Hawaii, 2001-2011**



Milk cow numbers dropped 5 percent from a year ago, and were estimated at 1,900 head.

Heifers weighing 500 pounds or more amounted to 17,000 head on January 1, 2012, unchanged from the previous year's estimate. The number of **beef cow replacements** (heifers weighing 500 pounds or more) was 10,000 head, a decrease of 9 percent from last year. **Other heifers** (greater than 500 pounds) increased by 1,000 head, or 20 percent, from a year ago. ■

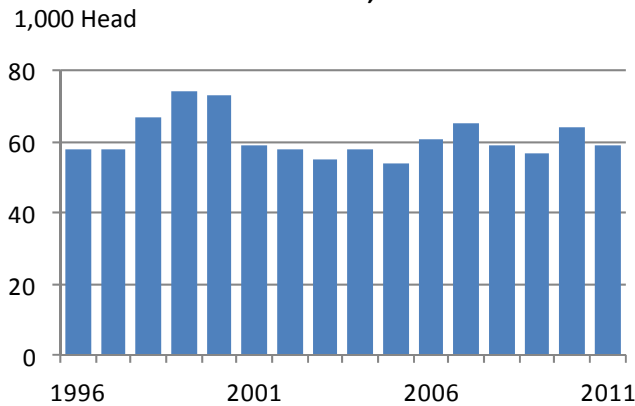
Inside this issue:

Cattle	1-3
Hogs	4
Coffee.....	5
Taro	6

CATTLE AND CALVES: January 1 Inventory by Sex, Class, and Weight, State of Hawaii, 2008-2012

Year	All cattle and calves	All cows and heifers that have calved			Heifers 500 pounds and over				Steers 500 lbs. and over	Bulls 500 lbs. and over	Steers, heifers, and bulls under 500 lbs.
		Total	Beef cows	Milk cows	Total	Beef cow replacements	Milk cow replacements	Other			
1,000 head											
2008	152	85	82.7	2.3	20	14	1	5	8	5	34
2009	150	86	84.4	1.6	19	13	1	5	8	5	32
2010	151	83	81.2	1.8	19	12	1	6	8	5	36
2011	141	81	79.0	2.0	17	11	1	5	8	5	30
2012	140	80	78.1	1.9	17	10	1	6	6	5	32

**CATTLE AND CALVES: Marketings
State of Hawaii, 1996-2011**



Cattle Marketings Down 8 Percent

The total **cattle marketings** for 2011 are estimated at 60,000 head, a reduction of 8 percent compared to 2010. **Farm slaughter** remained constant from the previous year at 2,000 head. All **cattle and calf deaths** totaled 5,000 head in 2011, a 44 percent decrease from 2010. ■

2011 Calf Crop Consistent

The 2011 calf crop was estimated at 65,000 head, remaining constant since January 2006. ■

CATTLE AND CALVES: Inventory and Disposition, State of Hawaii, 2007-2011

Year	Inventory beginning January 1	Calf crop	Inshipments	Marketings	Farm slaughter	Deaths	Inventory January 1 following year
1,000 head							
2007	158	65	*	65	1	5	152
2008	152	65	*	59	1	7	150
2009	150	65	*	57	1	6	151
2010	151	65	*	65	1	9	141
2011	141	65	*	60	1	5	140

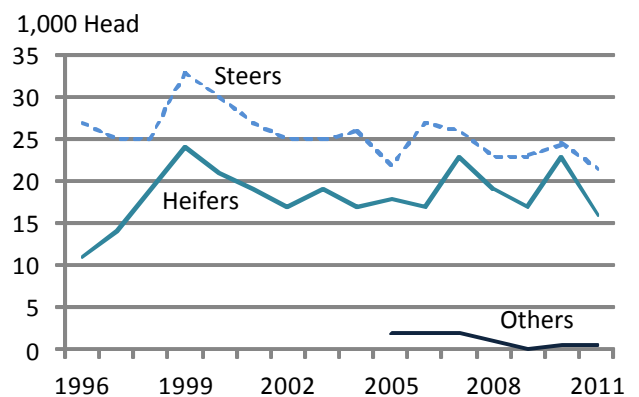
* = Less than 500.

Exports Down 21 Percent

A grand total of 38,000 head of cattle were exported in 2011, a reduction of 10,000 head or 21 percent over last year's total. **Calves** (animals weighing less than 500 pounds) accounted for the 98.7 percent of 2011 exports, or 37,500 head. This estimate is down 18 percent from 2010 calf exports.

When the 2011 cattle exports are classified by sex of the animal, **steers** accounted for 57 percent of the total or 21,500 head. This is a decline of 3,000 head or 12 percent as compared to the previous year. **Heifer** exports totaled 16,000 head and comprised 42 percent of 2011 cattle exports. This is a reduction of 30 percent from 2010. Exports of **other cattle**, mainly bulls and cows, totaled 500 head, unchanged from last year. ■

**CATTLE AND CALVES: Exports by Sex Class
State of Hawaii, 1996-2011**



CATTLE AND CALVES: Exports, State of Hawaii, 2007-2011

Year	Total	By Weight Category		By Sex Class		
		Cattle ¹	Calves ²	Steers	Heifers	Others
1,000 head						
2007	51	3.0	48.0	26.0	23	2.0
2008	43	2.0	41.0	23.0	19	1.0
2009	41	3.0	38.0	23.0	18	*
2010	48	2.0	46.0	24.5	23	.5
2011	38	.5	37.5	21.5	16	.5

NA = Not available. ¹ 500 pounds or more. ² 499 pounds or less. * Less than 500.

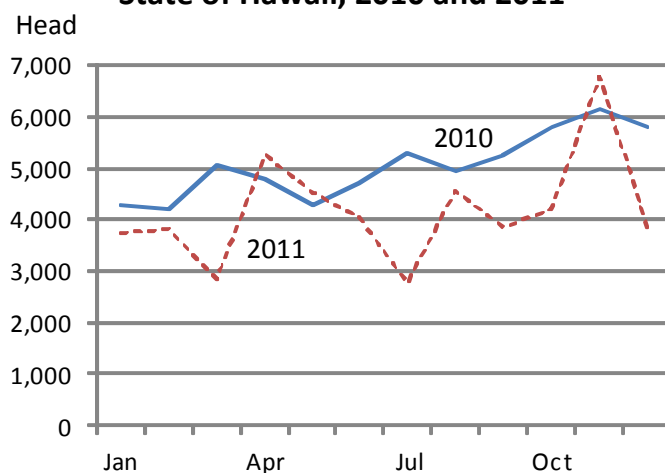
Cattle: Marketings for 2011 Down 17 Percent from Previous Year

Cattle marketings (sum of exports and local slaughter) totaled 50,150 head for the year of 2011, down 17 percent from 60,500 head in 2010. A total of 51,850 head of cattle were marketed in 2009.

Exports accounted for 76 percent of the year's total with steers making up 57 percent of the exported cattle. Local slaughter, accounting for the remaining 24 percent of marketings totaled 12,000 head by the year's end. This is a decrease of 4 percent from the previous year.

The average live weight of commercially slaughtered cattle in Hawaii during 2011 was 1,128 pounds, up 3 percent, or 33 pounds heavier than a year ago. ■

**CATTLE: Monthly Total Marketings
State of Hawaii, 2010 and 2011**



CATTLE: Number and Weights of Total Marketing, Exports, and Local Slaughter by Months, State of Hawaii, 2011 with 2010 Year-to-date Comparisons

Month	Total marketings ¹	Marketings							
		Exports				Commercial (local) slaughter ³			
		Total exports ²	Type of cattle		Average live weight	Number slaughter	Average live weight	Total live weight	Total dress weight ⁴
Steers	Heifers								
		Head			Pounds	Head	Pounds	— 1,000 pounds —	
January	3,750	2,750	1,600	1,150	458	1,000	1,112	1,107	608
February	3,800	2,700	1,500	1,100	493	1,100	1,121	1,191	654
March	2,850	1,750	1,050	650	432	1,100	1,139	1,275	700
April	5,250	4,250	2,200	1,950	419	1,000	1,123	1,151	632
May	4,520	3,520	1,900	1,400	408	1,000	1,129	1,112	610
June	4,050	2,950	1,650	1,250	512	1,100	1,126	1,217	668
July	2,750	1,750	1,000	750	443	1,000	1,128	1,073	589
August	4,550	3,550	2,000	1,500	508	1,000	1,143	1,183	649
September	3,850	2,850	1,700	1,100	462	1,000	1,123	1,135	623
October	4,200	3,200	1,900	1,300	429	1,000	1,147	1,128	619
November	6,780	5,980	3,700	2,250	431	800	1,119	923	507
December	3,800	2,900	1,400	1,500	448	900	1,095	1,039	570
Year-to-date ⁵ :									
2011	50,150	38,150	21,600	15,900	451	12,000	1,128	13,534	7,430
2010	60,500	48,000	24,700	22,850	410	12,500	1,095	13,710	7,527
Change	-17.1	-20.5	-12.6	-30.4	10.0	-4.0	3.0	-1.3	-1.3

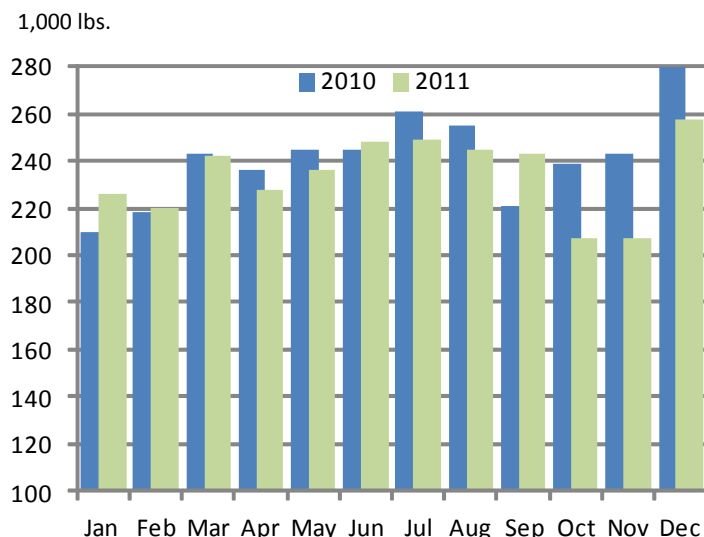
¹ Sum of commercial (local) slaughter and exports. Totals may not add due to rounding. ² Cattle and calves shipped out-of-State include: steers, heifers, and all other classes. All other classes not shown separately, but are included in total exports. ³ Excludes non-inspected farm slaughter; includes custom slaughter. ⁴ Estimate based on 54.9 dressing percentage. ⁵ Includes revisions made to previous months.

Hogs: Monthly Slaughter

Pork Production Down 4 Percent from Previous Year

Cumulative number of hogs slaughtered for 2011 totaled 15,300 head which is down 700 head or 4 percent compared to the previous year. Total dressed weight for 2011 was 2.8 million pounds, down 3 percent when compared to the 2010 yearly total of 2.9 million pounds. ■

HOGS: Monthly Commercial Production, State of Hawaii, 2010 and 2011



HOGS: Number and Weights of Commercial Slaughter by Months, State of Hawaii, 2011 with 2010 Year-to-date Comparisons ¹

Month	Total Commercial Slaughter	Average Live Weight	Total Live Weight	Total Dressed Weight ²
	Head	Pounds	1,000 pounds	
January	1,200	247	301	226
February	1,200	252	293	220
March	1,300	249	323	242
April	1,200	251	304	228
May	1,300	249	315	236
June	1,300	258	331	248
July	1,300	248	332	249
August	1,400	237	326	245
September	1,400	236	324	243
October	1,100	244	276	207
November	1,100	245	276	207
December	1,500	233	344	258
Year-to-date:				
2011	15,300	245	3,745	2,809
2010	16,000	242	3,865	2,899
Change	-4.4	1.2	-3.1	-3.1

¹ Excludes non-inspected farm slaughter; includes custom slaughter and live hog inshipments from the mainland for slaughter. ² Estimate based on 75.0 dressing percentage.

Coffee: Lower Marketings but Higher Price Forecast for 2011/12



Hawaii coffee preliminary marketing for 2011/12 is estimated at 8.3 million parchment pounds, 6 percent lower than the 2010/11 season. Total acreage and harvested acreage remained unchanged at 8,000 and 6,300, respectively. Yields averaged 1,320 pounds per acre, down 80 pounds from the previous season. This Statewide farm price for coffee averaged \$4.15 per pound (parchment equivalent basis) for 2011/12, up 9 percent from last season's price of \$3.80 per pound. The farm revenue for coffee is estimated at \$34.4 million (parchment equivalent basis) for 2011/12, increasing 3 percent from 2010/11.

Weather conditions for 2011/12 had improved, especially for Kona side of Hawaii Island, when compared to the very dry weather of previous season. Coffee Berry Borer was confirmed in Kona on

September 8, 2010. Growers heavily commented on the pest's effect on their coffee crop. Workshops were set up to help growers and millers learn about the pest and its lifecycle as well as how to limit the spread to neighboring farms and islands. Some reporters also had difficulty in projecting their output due to unknown losses to the borer. Preliminary results reflect information collected in fall 2011. Another survey will be done in the summer 2012 to collect updated information. ■

COFFEE: Number of Farms, Acreage, Yield, Marketings, Price, and Value, State of Hawaii, 2007/08 – 2011/12

Crop year ¹	Farms	Acreage		Yield ²	Marketings ³	Farm price ⁴	Value of sales	Green production
		In crop	Harvested					
	<i>Number</i>	<i>Acres</i>		<i>1,000 pounds</i>		<i>Dollars per pound</i>	<i>\$1,000</i>	<i>1,000 pounds</i>
2007/08	830	7,800	6,400	1.2	7,500	4.25	31,875	6,000
2008/09	830	7,800	6,300	1.4	8,700	3.40	29,580	7,000
2009/10	830	8,000	6,300	1.4	8,700	3.60	31,320	7,000
2010/11	830	8,000	6,300	1.4	8,800	3.80	33,440	7,100
2011/12 ⁵	830	8,000	6,300	1.3	8,300	4.15	34,445	6,600

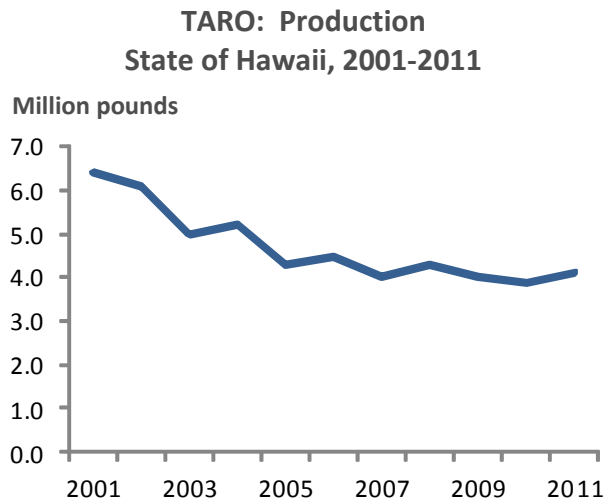
¹ Coffee harvesting occurs throughout the year in Hawaii. The main harvest normally begins in late summer and extends to the early part of the following year. ² Average yields based on parchment equivalent marketings and harvested acreage. ³ Expressed in parchment equivalent pounds. Coffee marketed in cherry form was converted to an equivalent parchment weight and added to parchment marketings. ⁴ Represents an average farm price for parchment equivalent sales. Obtained by dividing farm revenues from the sale of cherry and parchment coffee by total marketings (parchment equivalent basis). ⁵ Preliminary.

Taro: Production Up 3 Percent

Hawaii taro production for 2011 is estimated at 4.1 million pounds, up 3 percent from 2010's estimate of 3.9 million pounds. The farm price increased 4 percent to an average of 67.0 cents per pound, while the value of sales increased 9 percent from 2010 to 2.7 million dollars.

Taro processing totaled 4.0 million pounds in 2011, up 3 percent from 2010. The majority of all processed taro and taro in general, is made into poi. Other processed uses of taro include taro chips and *kulolo*, a traditional Hawaiian dessert which is a mixture of taro and coconut cream and/or shredded coconut meat.

Taro for poi production decreased 4 percent in the fourth quarter as compared to the third quarter of 2011. Taro millers used 315,000 pounds of taro in October, 5 percent less than in September. The amount of taro



used for poi millings then rose 6 percent to 335,000 pounds in November. Taro for poi millings then decreased 10 percent to 300,000 pounds in December. ■

TARO: Number of Farms, Acreage, Marketing, Price, and Value, 2007-2011

Year	Farms	Acreage in crop ¹			Marketings			Farm price			Value of sales
		Poi taro	Chinese taro	Total	Fresh	Processed	Total	Poi taro	Chinese taro	All	
	<i>Number</i>	<i>Acres</i>			<i>1,000 pounds</i>			<i>Cents per pound</i>			<i>1,000 dollars</i>
2007	105	355	25	380	100	3,900	4,000	59.2	50.5	59.0	2,360
2008	105	370	20	390	100	4,200	4,300	62.0	61.5	62.0	2,666
2009	110	415	30	445	100	3,900	4,000	60.9	62.0	61.0	2,440
2010	115	440	35	475	100	3,800	3,900	63.8	86.5	64.5	2,516
2011	115	450	35	485	100	4,000	4,100	65.6	121.2	67.0	2,747

¹ Survey conducted in November of each year. Does not include acreage used primarily for leaf production.

TARO: Poi Millings by Months, State of Hawaii, 5-year Average, 2010 and 2011

Year	Jan	Feb	Mar	Apr	May	Jun	Jul	Aug	Sep	Oct	Nov	Dec	Total
<i>1,000 pounds</i>													
5-year average ¹	329	306	320	297	300	306	344	364	355	376	351	388	4,036
2010	285	275	325	285	265	295	310	335	345	335	355	390	3,900
2011	320	320	375	355	375	320	305	350	330	315	335	300	4,000
<i>Percent</i>													
Percent Changes:													
2011/5-year	97	105	117	120	125	105	89	96	93	84	95	77	99
2011/2010	112	116	115	125	142	108	98	104	97	94	94	77	103

¹ Years: 2006-2010.