

National Agricultural Statistics Service

Hawaii Agricultural Statistics Service  
Hawaii Department of Agriculture  
P.O. Box 22159  
Honolulu, HI 96823-2159  
Telephone: (808) 973-9588  
Fax: (808) 973-2909

# Hawaii Ginger Root

Annual report on acres harvested, production, farm prices and value.

## Statistics ..... page 2

Acres harvested, yield, production, average farm prices, and total farm value from 1950.

## Outlook for next season ..... page 3

Acres expected to be harvested during the 2001/2002 season.

## U.S. imports of ginger root during 2000 ..... pages 4

Annual imports of ginger root by product type and country of origin.

## Second Largest Harvest on Record

Hawaii's ginger root farmers harvested 16.2 million pounds during the 2000/01 season, up 20 percent from the previous season and second only to the all-time record high of 18.0 million pounds harvested during the 1997/1998 season. Farm prices declined to an average of 45.0 cents per pound during the 2000/2001 season and total farm revenues were pegged at \$7.3 million, down 18 percent from the 1999/2000 season.

### Record-tying acreage boosts production

Hawaii farmers harvested 360 acres during the 2000/2001 season, up 33 percent from the previous season and matching the record high last achieved during the 1997/1998 season. Farmers could have harvested even more acreage had it not been for some heavy rains in early November.

The majority of the State's ginger root is grown in the windward areas of Hawaii island. North Hilo, South Hilo, and the Puna district experienced generally favorable weather for most of 2000 when the crop was in its growing stage. But, on November 2 the windward area of Hawaii island experienced torrential rains. On that day, many of the areas on the Big Island that received the heaviest rains were also major ginger root growing areas: Keaau (19.5 inches), Kurtistown (22.5 inches), and Papaikou (22.5 inches).

See *Rains* page 3

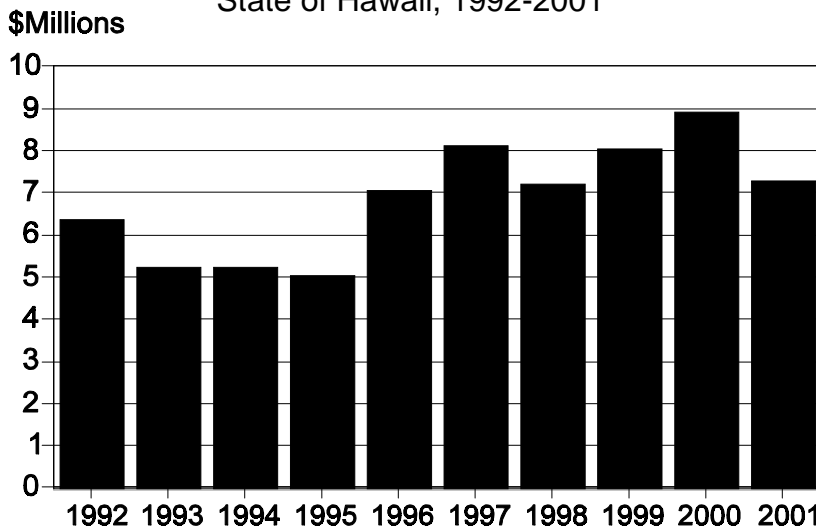
**Donald A. Martin**  
State Agricultural Statistician

**Ron Nakamura**  
Research Statistician

**Elyse Taka**  
Statistical Assistant

**Wendell Au**  
**Naomi Landgraf**  
**Robert Miyake**  
**June Okamura**  
**James Yamaki**  
Research Statisticians

**Farm Value of Fresh Hawaii Ginger Root**  
State of Hawaii, 1992-2001



## Hawaii Fresh Ginger Root Statistics

Acres harvested, yield per harvested acre, production, average farm price, and farm value  
State of Hawaii, 1950 to 2001

Year <sup>1/</sup>	Acres harvested	Yield per harvested acre	Production	Average farm price	Farm value
		----- 1,000 pounds -----		Cents per pound	\$1,000
1950	16	35.9	575	22.1	127
1951	14	27.9	390	43.3	169
1952	14	30.4	425	39.3	167
1953	13	43.5	565	28.8	163
1954	20	40.2	805	21.5	173
1955	20	39.2	785	19.5	150
1956	22	34.5	760	22.1	168
1957	17	33.5	570	25.3	144
1958	15	32.7	490	39.2	192
1959	25	29.2	730	24.4	178
1960	32	28.3	905	19.7	178
1961	27	25.2	680	23.8	162
1962	21	17.1	360	40.0	144
1963	17	22.6	385	30.6	118
1964	25	26.2	655	18.5	121
1965	15	35.0	525	23.4	123
1966	14	35.0	490	28.4	139
1967	19	37.9	720	28.3	204
1968	19	37.1	705	26.0	183
1969	21	40.0	840	28.9	243
1970	21	39.3	820	29.4	241
1971	23	40.2	925	27.5	254
1972	17	29.4	500	41.8	209
1973	13	39.6	515	68.7	354
1974	11	32.0	352	61.9	218
1975	22	36.0	793	60.7	481
1976	18	36.1	650	61.8	402
1977	39	28.5	1,110	65.4	726
1978	55	24.4	1,340	61.1	819
1979	75	24.8	1,860	61.2	1,138
1980	40	40.8	1,610	61.7	1,090
1981	64	44.7	2,860	76.2	2,179
1982	100	36.3	3,630	92.3	3,350
1983	160	32.1	5,140	54.6	2,806
1984	135	37.4	5,050	45.1	2,280
1985	125	43.4	5,425	82.3	4,465
1986	145	40.7	5,900	81.0	4,779
1987	215	46.7	10,050	45.0	4,523
1988	165	49.1	8,100	62.0	5,022
1989	180	50.0	9,000	71.5	6,435
1990	190	50.0	9,500	71.5	6,792
1991	250	48.0	12,000	63.0	7,560
1992	290	40.0	11,600	55.0	6,380
1993	360	27.5	9,900	53.0	5,247
1994	150	40.0	6,000	87.0	5,220
1995	135	43.0	5,800	87.0	5,046
1996	200	47.0	9,400	87.0	7,050
1997	275	44.0	12,100	75.0	8,107
1998	360	50.0	18,000	40.0	7,200
1999	350	46.0	16,100	50.0	8,050
2000	270	50.0	13,500	66.0	8,910
<b>2001</b>	<b>360</b>	<b>45.0</b>	<b>16,200</b>	<b>45.0</b>	<b>7,290</b>

<sup>1/</sup> Harvesting normally begins in December and continues into the year shown.

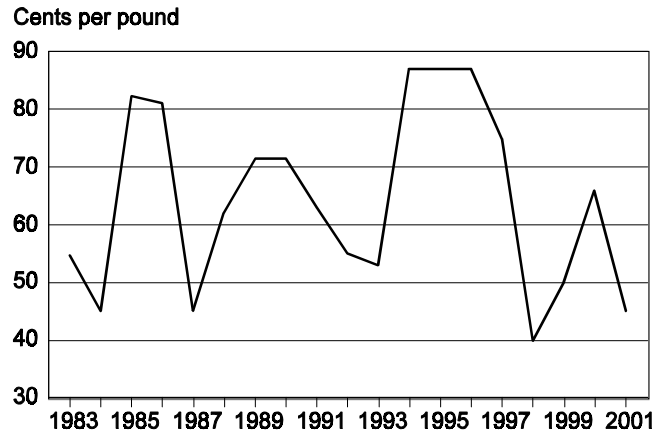
**Rains.** . . from page 1

As a result, losses to disease were higher than normal during the 2000/2001 season and is the major reason for a decline in average yields to 45,000 pounds per harvested acre, down 10 percent from the 1999/2000 season.

**Farm price and total revenue decline**

Due largely to its perishable nature, large increases in ginger root production normally result in relatively large declines in the farm price. For example, during the 1997/1998 season when production increased 49 percent, farm prices declined 47 percent. A similar thing occurred during the 2000/2001 season when production rose 20 percent and the average farm price declined 32 percent to a 14-season low of 45.0 cents per pound.

**Fresh Hawaii Ginger Root Farm Prices**  
State of Hawaii, 1983-2001



**Outlook for 2001/2002 season**

Acres planted by farmers for 2001/2002 season, forecast of production based on historical yields, and acres harvested in past seasons.

Hawaii ginger root growers are expected to plant 380 acres for harvest during the 2001/2002 season, up 6 percent from the 360 acres that were harvested during the 2000/2001 season. Farmers surveyed by the Hawaii Agricultural Statistics Service reported that plantings were 94 percent complete at the end of April 2001.

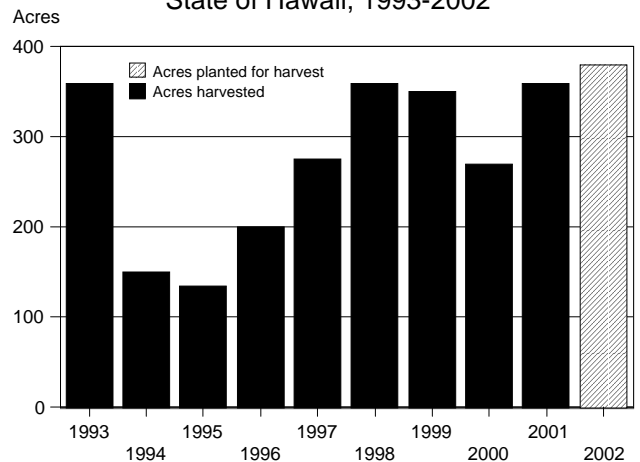
Based on the most recent 3-year average yield of 46,700 pounds per harvested acre, the 2001/2002 crop would result in 17.7 million pounds, up 9 percent from the 2000/2001 harvest.

The eventual size of the 2001/2002 harvest, however, will depend on a number of subsequent factors. Future weather conditions, the degree of insect and disease infestation, and the amount of acreage that will actually be planted all will have an important impact on the 2001/2002 crop.

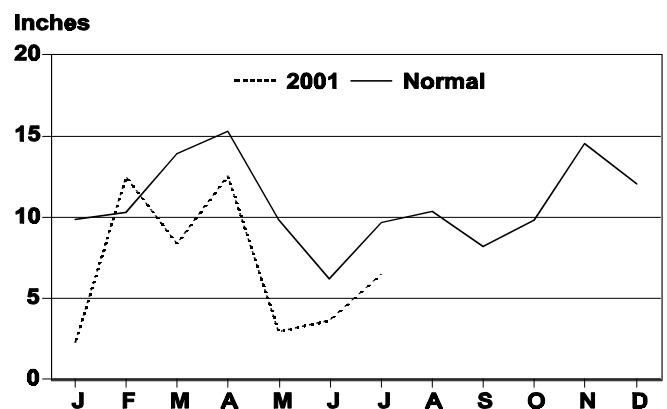
Weather conditions have been variable so far this year. Unlike the previous year, 2001 started with an abnormally dry January which actually benefitted the harvesting of the 2000/2001 crop and allowed farmers to prepare fields for planting the 2001/2002 crop. New plantings then made favorable progress from February through April with rainfall near normal levels. May was an unusually dry, but more recent weather conditions have been closer to normal. The mixture of sunshine and showers in June and July benefitted the young plantings. Currently most fields are in fair to good condition.

Regular updates on the progress of the 2001/2002 ginger root crop are published in the weekly *Hawaii Crop Weather* report.

**Expected Ginger Root for Harvest with Acres Harvested in Previous Seasons**  
State of Hawaii, 1993-2002



**Monthly Rainfall at Hilo Airport**  
Hawaii island, 2000



## U.S. Imports of Ginger Root

Year	Type of Ginger Root				Total
	Ground	Not Ground	Preserved	Sweet	
<b>2000 by Country</b>					
	<i>pounds</i>				
Australia	70,336	3,137	746,716	14,288	834,477
Brazil	37,238	7,264,721	86,949	0	7,388,908
Canada	0	0	0	976,188	976,188
China	170,715	23,120,985	329,676	474,128	24,095,504
Costa Rica	15,829	3,034,118	0	0	3,049,947
Ecuador	0	242,136	0	0	242,136
Fiji	0	277,023	21,164	341,889	640,076
France	1,984	64,903	0	0	66,887
Guatemala	0	30,679	0	0	30,679
Honduras	0	110,644	0	0	110,644
Hong Kong	10,000	496,110	108,568	114,730	729,408
India	151,670	560,017	5,485	47,910	765,082
Indonesia	0	136,271	374,586	0	510,857
Japan	166,253	904	0	4,409	171,566
Nicaragua	0	589,118	0	0	589,118
Niger	0	43,697	0	0	43,697
Nigeria	0	682,374	0	0	682,374
Singapore	0	0	22,796	14,733	37,529
South Africa	0	493,147	0	0	493,147
Taiwan	0	18,662	2,698	29,733	51,093
Thailand	170,255	3,815,325	370,357	690,049	5,045,986
United Kingdom	10,512	86,581	0	132,827	229,920
All others	20,104	69,513	10,719	4,127	104,463
<b>Total</b>	<b>824,896</b>	<b>41,140,065</b>	<b>2,079,714</b>	<b>2,845,011</b>	<b>46,889,686</b>
1999	668,529	33,679,098	1,999,925	2,058,839	38,406,391
1998	562,744	30,374,619	1,512,118	1,815,909	34,265,390
1997	853,615	29,649,346	1,267,228	2,045,717	33,815,906
1996	1,219,638	30,367,631	1,064,712	1,819,324	34,471,304

Source: U.S. Department of Commerce

U.S. Department of Agriculture  
Hawaii Agricultural Statistics Service  
P.O. Box 22159  
Honolulu, Hawaii 96823-2159

**OFFICIAL BUSINESS**  
PENALTY FOR PRIVATE USE, \$300

PRESORTED STANDARD Postage and Fees Paid NATIONAL AGRICULTURAL STATISTICS SERVICE Permit No. G-38
---

Return Service Requested