



National Agricultural Statistics Service

USDA, NASS, Hawaii Field Office
Hawaii Department of Agriculture

Hawaii Ginger Root

Mark E. Hudson, Director

August 17, 2005

Production drops 15 percent

Hawaii's ginger root farmers harvested 5.1 million pounds during the 2004/05 season, down 15 percent from last season and the smallest harvest in 21 seasons. Farm prices averaged 80.0 cents per pound during the 2004/2005 season, down 11 percent from the previous season's farm price of 90.0 cents per pound. Total farm value of the 2004/05 harvest is estimated at \$4.1 million, down 24 percent from the 2003/04 season.

Acreage reduction and disease limit production

A reduction in acreage and the continued presence of disease were major factors for the decline in ginger root production during the 2004/05 season. The 120 acres of ginger root harvested during the 2004/05 season represented a 20 decrease percent from the previous season and the lowest acreage total in 23 seasons. Acreage has been declining for the past four seasons as farmers continue to battle against diseases such as bacterial wilt (*Pseudomonas solanacearum*) which first became significant in the 1990s. Ginger root growers also reported rootknot nematode (*Meloidogyne javanica*) problems during the 2004/05 season.

Continued on page 3...

Outlook for next season..... page 2

Acres expected to be harvested during the 2005/06 season.

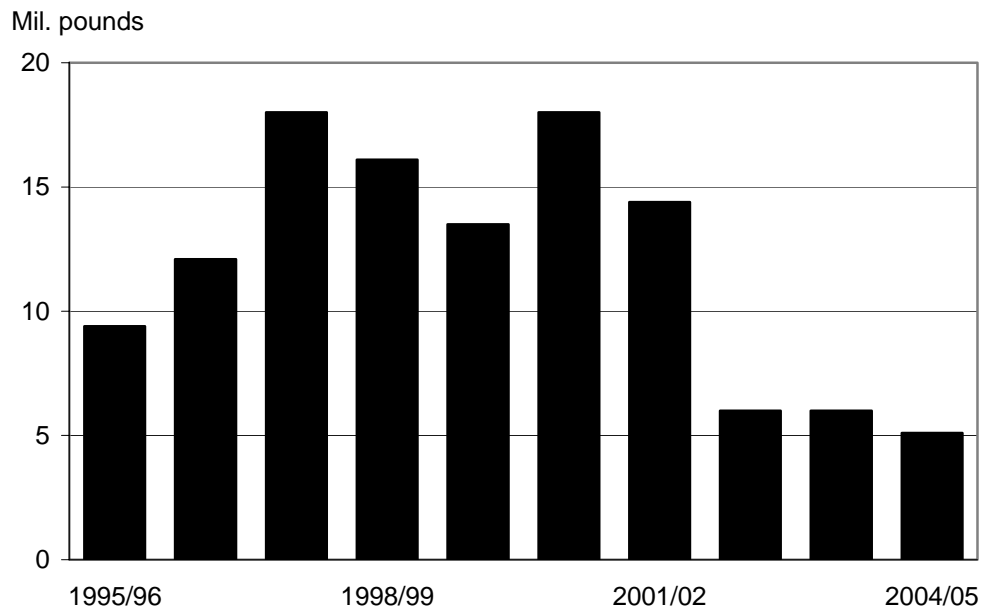
Statistics page 3

Acres harvested, yield, production, average farm prices, and total farm value from 1953.

U.S. imports of ginger root during 2004 page 4

Annual imports of ginger root by product type and country of origin.

**Production of Hawaii Fresh Ginger Root,
State of Hawaii, 1995/96 - 2004/05 seasons**



Hawaii Fresh Ginger Root Statistics

Acres harvested, yield per harvested acre, production, average farm price, and farm value
State of Hawaii, 1953 to 2005

Year ^{1/}	Acres harvested	Yield per harvested acre	Production	Average farm price	Farm value
		----- 1,000 pounds -----		Cents per pound	\$1,000
1953	13	43.5	565	28.8	163
1954	20	40.3	805	21.5	173
1955	20	39.3	785	19.5	150
1956	22	34.5	760	22.1	168
1957	17	33.5	570	25.3	144
1958	15	32.7	490	39.2	192
1959	25	29.2	730	24.4	178
1960	32	28.3	905	19.7	178
1961	27	25.2	680	23.8	162
1962	21	17.1	360	40.0	144
1963	17	22.6	385	30.6	118
1964	25	26.2	655	18.5	121
1965	15	35.0	525	23.4	123
1966	14	35.0	490	28.4	139
1967	19	37.9	720	28.3	204
1968	19	37.1	705	26.0	183
1969	21	40.0	840	28.9	243
1970	21	39.0	820	29.4	241
1971	23	40.2	925	27.5	254
1972	17	29.4	500	41.8	209
1973	13	39.6	515	68.7	354
1974	11	32.0	352	61.9	218
1975	22	36.0	793	60.7	481
1976	18	36.1	650	61.8	402
1977	39	28.5	1,110	65.4	726
1978	55	24.4	1,340	61.1	819
1979	75	24.8	1,860	61.2	1,138
1980	40	40.3	1,610	61.7	1,090
1981	64	44.7	2,860	76.2	2,179
1982	100	36.3	3,630	92.3	3,350
1983	160	32.1	5,140	54.6	2,806
1984	135	37.4	5,050	45.1	2,280
1985	125	43.4	5,425	82.3	4,465
1986	145	40.7	5,900	81.0	4,779
1987	215	46.7	10,050	45.0	4,523
1988	165	49.1	8,100	62.0	5,022
1989	180	50.0	9,000	71.5	6,435
1990	190	50.0	9,500	71.5	6,792
1991	250	48.0	12,000	63.0	7,560
1992	290	40.0	11,600	55.0	6,380
1993	360	27.5	9,900	53.0	5,247
1994	150	40.0	6,000	87.0	5,220
1995	135	43.0	5,800	87.0	5,046
1996	200	47.0	9,400	75.0	7,050
1997	275	44.0	12,100	67.0	8,107
1998	360	50.0	18,000	40.0	7,200
1999	350	46.0	16,100	50.0	8,050
2000	270	50.0	13,500	66.0	8,910
2001	360	50.0	18,000	45.0	8,100
2002	320	45.0	14,400	30.0	4,320
2003	160	37.5	6,000	60.0	3,600
2004	150	40.0	6,000	90.0	5,400
2005	120	42.5	5,100	80.0	4,080

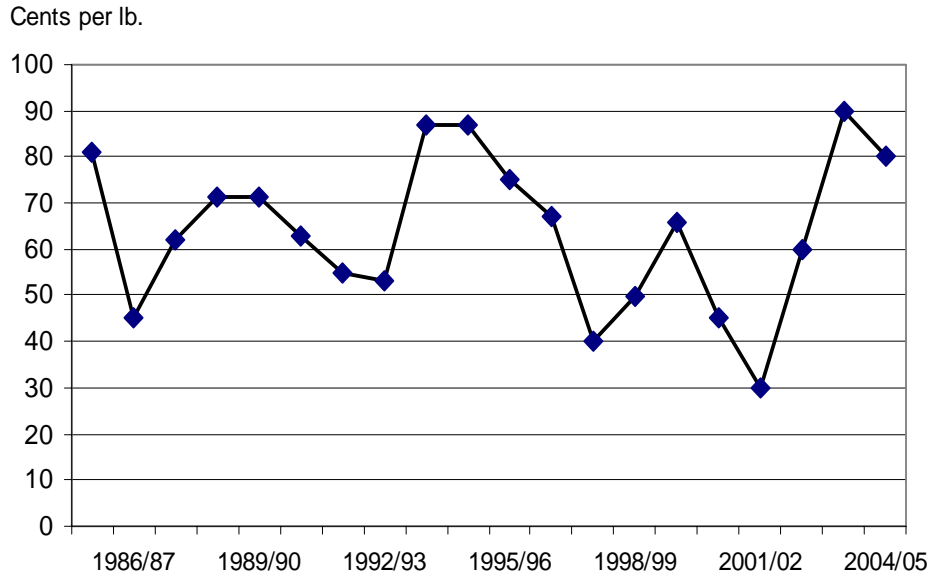
^{1/} Harvesting normally begins in December and continues into the year show.

Weather conditions improved during the 2004/05 season in the windward sections of the Big Island where the majority of the State's ginger root is grown. Rainfall there during Hawaii's wet season (October – April) totaled 77.45 inches, down 7 percent from the normal and drier than the 101.43 inches recorded during the previous wet season. The relatively drier conditions did help raise average yields to 42,500 pounds per harvested acre, up 6 percent from the previous season. However, untimely rains also produced outbreaks of disease that kept yields at relatively low levels.

Farm price drops 11 percent

Hawaii ginger root growers received an average of 80.0 cents per pound during the 2004/05 season, down 11 percent from the previous season but

Hawaii Fresh Ginger Root Farm Price, State of Hawaii, 1985/86 - 2004/05 seasons



the second highest farm price in the past 10 seasons. Local farmers cited the presence of Chinese ginger in the U.S. market as the reason for the

lower price. Farm value is estimated at \$4.1 million for the 2004/05 season, down 24 percent from the previous season. ■

Hawaii ginger root 2005/06 season outlook

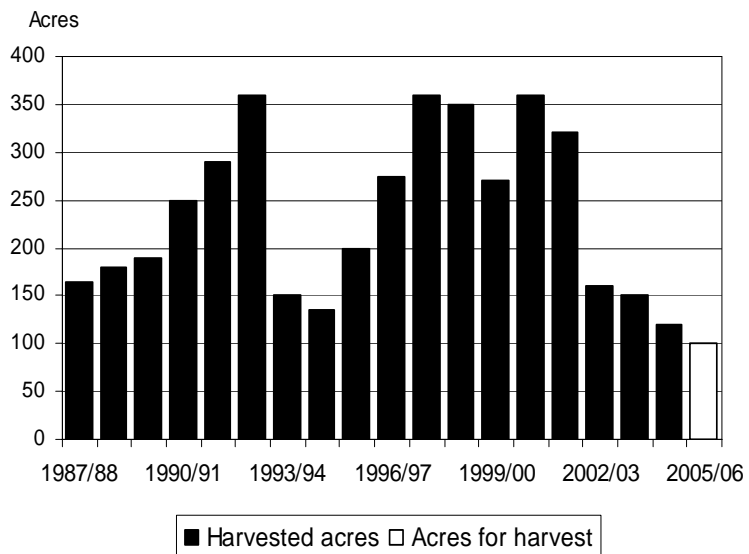
Less Acreage Expected To Be Harvested

Hawaii ginger root growers are expected to plant 100 acres for harvest during the 2005/06 season, down 33 percent from the 2004/05 season.

Based on the most recent 3-year average yield of 39,800 pounds per harvested acre, the 2005/06 crop would result in a harvest of 4.0 million pounds, down 22 percent from 2004/05 season. The eventual harvest, however, will depend on weather and economic conditions in the ensuing months.

Latest reports indicate that young ginger root fields were making good progress. Removal of diseased plants continued in isolated fields. Farmers were busy with fertilizing, mounding, and weeding. Overall soil moisture was good in the windward side of the Big Island. ■

Expected Ginger Root for Harvest with Acres Harvested in Previous Seasons, State of Hawaii, 1987/88 - 2005/06



U.S. Imports of Ginger Root

Year	Type of Ginger Root				Total
	Ground	Not Ground	Preserved	Sweet	
2004 by Country					<i>Pounds</i>
Australia	7,538	99,050	1,122,205	34,398	1,263,191
Brazil	253,395	5,741,268	0	0	5,994,663
Canada	2,291	0	0	169,201	171,492
China	3,905,539	43,647,672	648,893	4,101,625	52,303,729
Costa Rica	0	2,406,526	0	0	2,406,526
Dominican Republic	36,338	158,403	0	0	194,741
Ecuador	0	167,098	0	0	167,098
Fiji	0	122,598	218,608	0	341,206
Germany	6,614	0	0	0	6,614
Honduras	0	908,253	0	0	908,253
Hong Kong	8,596	134,895	51,813	121,720	317,024
India	150,649	603,547	0	36,294	790,490
Indonesia	62,276	0	48,867	0	111,143
Israel	666	0	0	0	666
Jamaica	0	0	0	2,601	2,601
Japan	88,327	0	0	8,598	96,925
Korea	0	0	10,370	0	10,370
Mexico	33,695	281,278	0	0	314,973
Nigeria	0	1,366,795	0	0	1,366,795
Philippines	0	322,092	0	0	322,092
Taiwan	0	0	0	17,696	17,696
Thailand	18,849	3,109,804	848,566	1,288,994	5,266,213
Turkey	28,660	0	0	0	28,660
United Kingdom	0	0	1,382	0	1,382
Vietnam	0	92,639	6,224	2,496	101,359
Total	4,603,432	59,161,918	2,956,929	5,783,625	72,505,902
2003	2,739,548	57,547,630	3,136,814	4,828,067	68,252,059
2002	2,243,714	44,306,307	3,017,356	3,314,684	52,882,061
2001	2,255,334	39,681,693	2,150,953	2,649,343	46,737,324
2000	824,896	41,140,065	2,079,714	2,845,011	46,889,686

Source: U.S. Department of Commerce.