



# Hawaii Monthly Livestock Review

National  
Agricultural  
Statistics  
Service

March 6, 2008

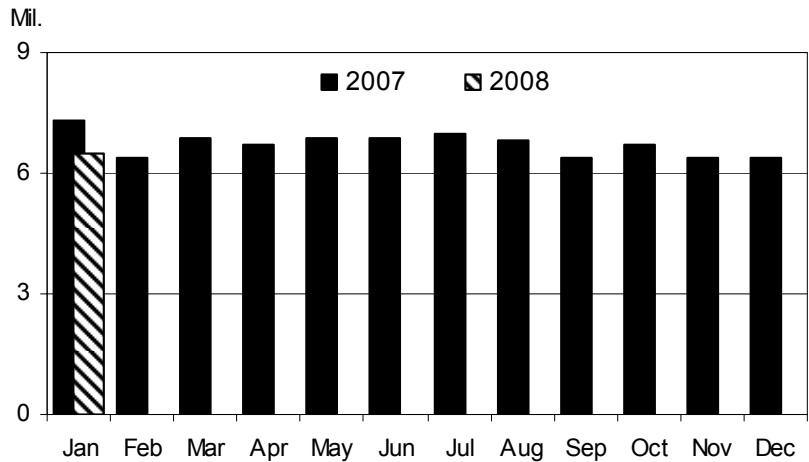
In Cooperation with the Hawaii Department of Agriculture

Hawaii Field Office · 1428 South King Street · Honolulu, HI 96814-2512 · 1-(800)-804-9514 · www.nass.usda.gov

## January Egg Production Down 11 Percent From A Year Ago

Hawaii egg production totaled 6.50 million (18,056 cases) in January 2008, down 11 percent from January 2007. The average number of layers on hand during January 2008 was estimated at 361,000, up fractionally from December 2007 but down 10 percent from January 2007. The average rate of lay during January 2008 was 1,801 per 100 layers (58.1 percent rate of lay), down 1 percent from January 2007. ■

Monthly Eggs: Total eggs produced, State of Hawaii, 2007 and 2008



CONTENTS		Page
<b>Poultry</b>		
Number of layers, rate of lay, and total eggs.....		1
<b>Cattle</b>		
Total marketings and exports.....		2
Commercial slaughter.....		3
<b>Hogs</b>		
Commercial slaughter.....		3
<b>Pasture and livestock conditions</b>		
County summaries.....		4
<b>Dairy</b>		
Number of milk cows, milk per cow, and total milk production....		5
<b>Farm prices</b>		
Farm prices for selected livestock commodities.....		6
<b>U.S. livestock roundup</b>		
Latest national estimates and outlook reports.....		7-8

EGGS: Number of layers, rate of lay, and production, State of Hawaii, January 2008 and year-to-date totals with comparisons.

County	Number of layers on hand during month			Rate of lay per 100 layers		Total eggs produced			
	Jan. 2007	Dec. 2007	Jan. 2008	Jan. 2007	Jan. 2008	Jan. 2007	Jan. 2008	Year-to-date	
								2007	2008
State <sup>1/</sup>	403.0	360.0	361.0	1,811	1,801	7.30	6.50	7.30	6.50

-----thousands-----      -----eggs-----      -----millions-----

<sup>1/</sup> County data series discontinued.

Mark Hudson, Director  
King Whetstone, Deputy Director

Ron Nakamura, Nils Morita, Research Statisticians  
Karen Lee and Joyce Jay, Statistical Assistants

# Total Cattle Marketings and Exports

## January Cattle Marketings Down 63 Percent From 2007

Total cattle marketings for January 2008 is estimated at 2,300 head, down 63 percent from January 2007. The entire decline in marketings during January 2008 occurred in exports of cattle and calves as commercial slaughter increased. ■

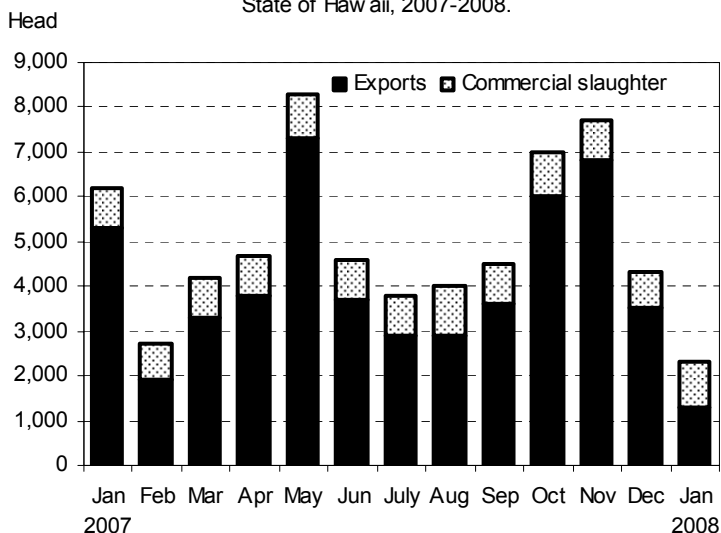
## January exports down 75 percent from a year ago

Exports of steers and heifers totaled 1,300 head in January 2008, seventy-five percent less than a year ago. Out-shipments of steers totaled 700 head in January 2008, down 76 percent compared to a year ago. Exports of heifers totaled 500 head, down 75 percent from January 2007. The remaining 100 head of cattle exported in January 2008 were of other classes that are not shown separately. ■

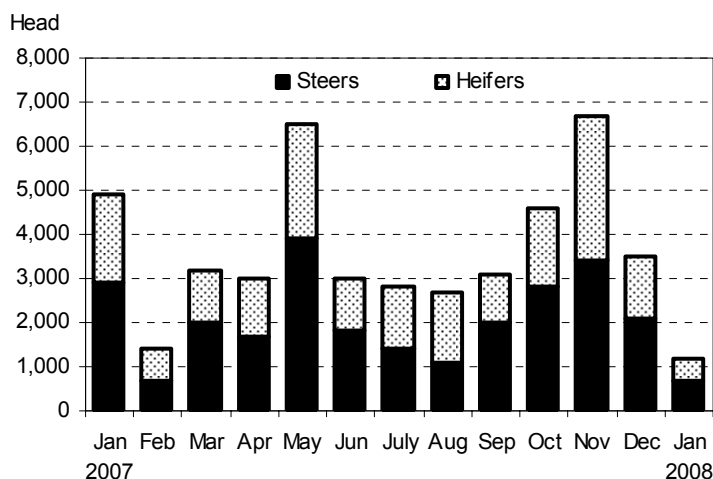
## Average live weight tops 473 pounds

The average live weight of steers and heifers exported from Hawaii in January 2008 was 473 pounds, up 11 percent from January 2007's average live weight of 428 pounds. ■

Monthly Cattle Marketings: Number of head by type, State of Hawaii, 2007-2008.



Monthly Cattle Exports: Number of head by type, State of Hawaii, 2007-2008.



Cattle: Total marketings, exports by type, and average live weight of exports, State of Hawaii, January 2008 and year-to-date comparison.

Month	Total marketings <sup>1/</sup>		Exports by type							
			Steers		Heifers		Total <sup>2/</sup>		Average live weight	
	2007	2008	2007	2008	2007	2008	2007	2008	2007	2008
January	6,200	2,300	2,900	700	2,000	500	5,300	1,300	428	473
Year-to-date <sup>3/</sup>	6,200	2,300	2,900	700	2,000	500	5,300	1,300	428	473

<sup>1/</sup> Sum of commercial slaughter and exports. Total may not add due to rounding.

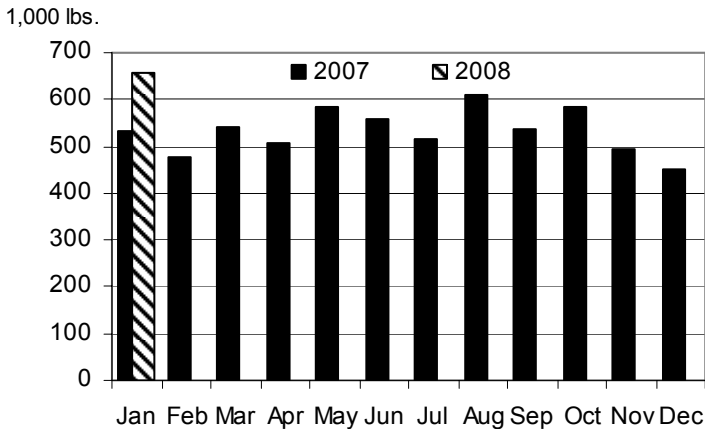
<sup>2/</sup> Cattle and calves shipped out-of-State include: steers, heifers and all other classes. All other classes of animals not shown separately but included in total.

<sup>3/</sup> Includes any revisions made to previous months.



# Cattle and Hogs Commercial Slaughter

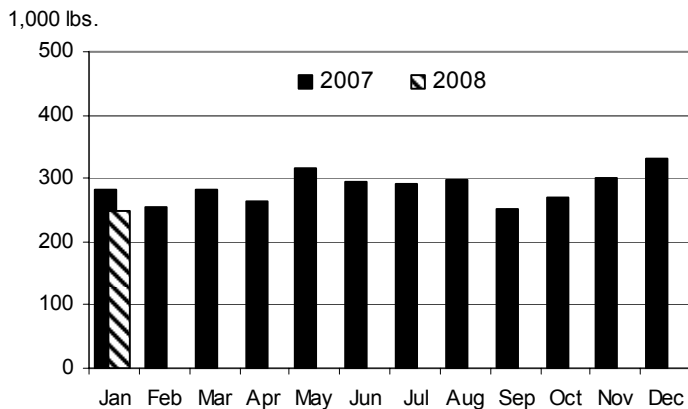
**Monthly Commercial Beef Production:**  
Total Dress Weight, State of Hawaii, 2007 and 2008



## Commercial Beef Production Up 23 Percent From Year Ago

Hawaii commercial beef production (local slaughter) during January 2008 totaled 658,000 pounds, up 23 percent from January 2007 as the number slaughtered and the average weight increased from a year ago. Commercial kill totaled 1,000 head in January 2008, up 11 percent from January 2007. Average live weight per head was 1,142 pounds in January 2008, up 6 percent from the average live weight per head in January 2007. ■

**Monthly Commercial Pork Production:**  
Total Dress Weight, State of Hawaii, 2007 and 2008



## Commercial Pork Production Down 12 Percent From Year Ago

Hawaii commercial pork production during January 2008 totaled 248,000 pounds, down 12 percent from January 2007. Total hog kill was 1,500 head in January 2008, down 12 percent from a year ago. Average live weight per head was 226 pounds in January 2008, up 4 percent from the 217-pound average of a year ago. ■

**Cattle and Hogs:** Total commercial slaughter, average live weight, total live weight, And total dressed weight, State of Hawaii, January 2008 and year-to-date with comparison. <sup>1/</sup>

Month	Total commercial slaughter		Average live weight		Total live weight		Total dressed weight <sup>2/</sup>	
	2007	2008	2007	2008	2007	2008	2007	2008
<b>Cattle</b>	----- number of head-----		----- Pounds -----		----- 1,000 pounds -----			
January	900	1,000	1,079	1,142	970	1,198	533	658
Year-to-date	900	1,000	--	--	970	1,198	533	658
<b>Hogs <sup>3/</sup></b>								
January	1,700	1,500	217	226	375	331	281	248
Year-to-date	1,700	1,500	--	--	375	331	281	248

-- Not estimated.

<sup>1/</sup> Excludes non-inspected farm slaughter and live cattle and calves shipped out-of-State; includes custom slaughter.

<sup>2/</sup> Estimates based on 54.9 dressing percentage for cattle and 75.0 dressing percentage for hogs.

<sup>3/</sup> Excludes non-inspected farm slaughter; includes custom slaughter and live hog inshipments from the mainland for slaughter.



# Pasture and Livestock Conditions, February 1, 2008

## Hawaii County

January Rainfall <sup>1/</sup>		
Station	2008	Normal
Honokaa	8.81"	7.40"
Kamuela upper	3.98"	6.30"
Kahuku Ranch	1.43"	4.30"
Puu Waawaa	0.07"	3.50"
Waikii	0.27"	2.60"

**North Hilo, South Hilo, and Puna district** pastures in windward areas were in better condition than most areas of the island. A mix of light rains and sunny periods kept new grass growing steadily while allowing pastures to recover from the long wet periods of the previous month. On the other hand, winter temperatures and shorter days slowed growth. Cattle and calves were in good condition. No unusual deaths were reported.

**Ka`u district** pastures were in fair to good condition. Heavy rains from the previous month led to greening of pastures and new grass growth. Cool temperatures and cloud cover in the upper elevations of Kapapala and the Pali limited grass growth. Pastures in the South Point area were driest in coastal regions, but pasture conditions improved with elevation. New grass growth was faster at the mid and lower elevations. Cattle and calves were in fair to good condition. No unusual deaths or disease were reported.

**North and South Kohala district** pasture conditions continued to improve. Prospects for grass growth increased as soil moisture remained relatively high. Cool temperatures and short days slowed grass growth. Slopes were green, although just two months earlier dry and brown conditions existed. Rain and cloudy skies helped pastures in the upslope regions and stock water ponds rose to higher levels. Most pastures are in good condition with the exception of coastal leeward regions which remained dry.

Livestock conditions were fair to good. Drought related stress was relieved by improved weather and pasture conditions.

**North and South Kona district** pastures were mostly in good condition with the exception of coastal areas which were in fair to good condition. New grass growth has been steady over the last three months. Stock water ponds are adequately supplied. Livestock were in good condition.

**Hamakua district** pastures in nearly all areas benefited from regular waves of showers. Soil moisture improved greatly. The Honokaa area was particularly in need of rain, especially at the higher elevations. Stock water ponds were replenished to more adequate levels. Cool temperatures and short days restricted growth, but the condition of new grass improved considerably. Cattle were in fair to good condition and generally improving.

## Maui County

January Rainfall <sup>1/</sup>		
Station	2008	Normal
Hana Airport	7.29"	8.50"
Pukalani	3.48"	4.40"
Ulupalakua Ranch	0.25"	4.30"
Molokai Airport	0.98"	4.30"

Grass growth was not stimulated at the upper elevations of the island of Maui due to reduced levels of rainfall. Windward areas continued to receive periodic rain and this benefited pastures. Leeward areas also benefited from passing showers. Overall, most pastures of Maui island were able to provide adequate forage, however, re-growth was slowed by cool temperatures and reduced rainfall. Cattle were in generally good condition with a minimal amount of supplemental feeding.

## Honolulu County

January Rainfall <sup>1/</sup>		
Station	2008	Normal
Hakipuu Mauka	5.10"	8.70"
Lualualei	0.66"	4.40"
Waimanalo	1.27"	6.80"

Winter rains aided grass growth and returned soil moisture levels to surplus levels in some areas. Overall grass growth was tempered by cool temperatures and reduced daylight hours during these winter months.

## Kauai County

January Rainfall <sup>1/</sup>		
Station	2008	Normal
Kalaheo	3.12"	7.10"
Kapahi	2.67"	8.70"
Princeville Airport	1.92"	6.50"

Grass growth slowed as winter conditions resulted in dormancy. Weeds continued to be a problem in some areas. Cattle and calves were in generally good shape. ■

<sup>1/</sup> Rainfall stations were selected from the National Weather Service's Hydronet system of automated rain gauges. Featured stations may vary each month. All rainfall data has not been quality controlled, and therefore is not certified by the National Weather Service. A complete listing of Hydronet stations, rainfall gauge location maps, and other rainfall data may be found at the National Weather Service's hydrology homepage:

<http://www.prh.noaa.gov/hnl/pages/hydrology.php>

## January Milk Production

### Down 59 Percent From Year Ago

Hawaii's dairy cows produced 1.8 million pounds of milk in January 2008, down 59 percent from a year ago. ■

## January's Cow Herd

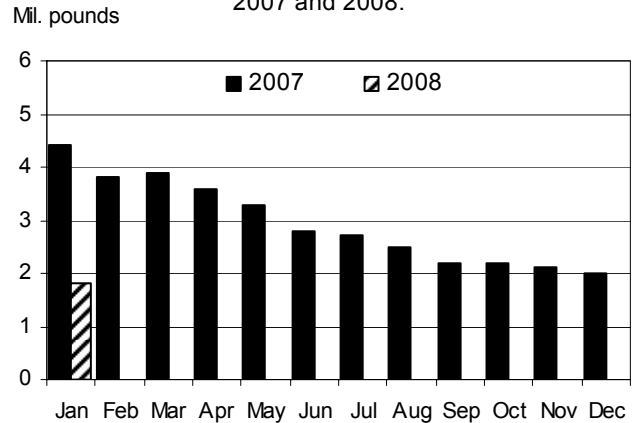
### Down 42 Percent From Year Ago

Hawaii's cow herd, both dry and milking, numbered 2,200 head in January 2008, down 4 percent from December 2007 and down 42 from a year ago. ■

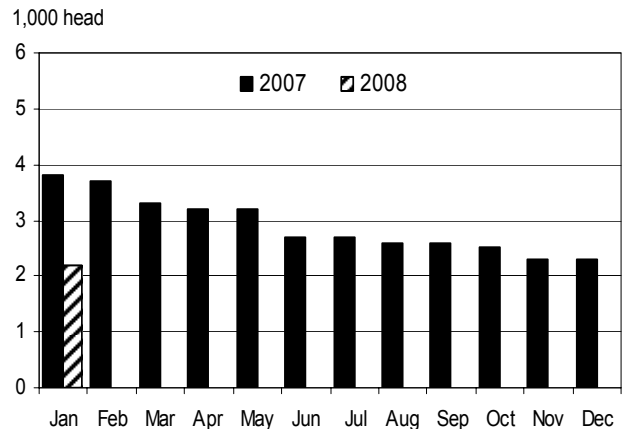
## Milk Per Cow Decreases

Average milk per cow is estimated at 790 pounds for January 2008, down 33 percent from January 2007's average of 1,180 pounds per cow. ■

Milk: Monthly production, State of Hawaii, 2007 and 2008.



Milk: Average number of cows on hand during month, State of Hawaii, 2007 and 2008.



Milk: All milk cows, milk per cow, and total milk production, State of Hawaii, January 2008 and year-to-date with comparisons. <sup>1/</sup>

Area	All milk cows <sup>2/</sup>			Milk per cow		Milk production			
	Jan. 2007	Dec. 2007	Jan. 2008	Jan. 2007	Jan. 2008	Jan. 2007	Jan. 2008	Year-to-date	
								2007	2008
State	3,800	2,300	2,200	1,180	790	4,400	1,800	4,400	1,800

----- number of head -----      ----- pounds -----      ----- 1,000 pounds -----

<sup>1/</sup> Figures for 2008 are preliminary.

<sup>2/</sup> Includes dry cows and cows on non-commercial dairy farms.

# Average Farm Prices

## Mixed Farm Prices During January 2008

### Steers and heifers

The average dress weight farm price for steers and heifers is estimated at 98.0 cents per pound for January 2008, unchanged from December 2007, but a penny lower than a year ago.

### Cows

The average dress weight farm price for cows is estimated at 55.0 cents per pound in January 2008, up a penny from December 2007. Compared to a year ago, the average dress weight farm price for cows was unchanged in January 2008.

### Market hogs

The average dress weight farm price for market hogs is estimated at \$1.19 per pound for January 2008, unchanged from December 2007, but down a penny compared to a year ago.

### Milk

The average farm price for milk was \$29.80 per hundredweight during January 2008, down 20 cents per hundredweight from December 2007, but \$3.00 per hundredweight higher than January 2007.

### Eggs

The average farm price for a dozen eggs was \$1.35 in January 2008, up 5 cents per dozen from December 2007. Compared to a year ago, the average farm price for a dozen eggs was up 30.0 cents in January 2008. ■

**Livestock Commodity Farm Prices:** Average farm prices for steers and heifers, cows, market hogs, milk, and eggs, State of Hawaii, January 2008 with comparisons.

Commodity	January 2007	December 2007	January 2008
	----- cents per pound -----		
Steers and heifers <sup>1/</sup>			
Dressed weight .....	99.0	98.0	98.0
Live weight <sup>2/</sup> .....	54.4	53.8	53.8
Cows <sup>1/</sup>			
Dressed weight .....	55.0	54.0	55.0
Live weight <sup>2/</sup> .....	30.2	29.6	30.2
Market hogs <sup>1/</sup>			
Dressed weight .....	120.0	119.0	119.0
Live weight <sup>3/</sup> .....	90.0	89.3	89.3
	----- dollars per 100 pounds -----		
Milk.....	26.80	30.00	29.80
	----- cents per dozen -----		
Eggs <sup>4/</sup> .....	105.0	130.0	135.0

<sup>1/</sup> Equivalent delivered slaughterhouse for sales in county of production and delivered shipper's dock for off-island sales.

<sup>2/</sup> The average live weight price for range steers, heifers, and cows is equal to the dressed weight price multiplied by a factor of 0.549.

<sup>3/</sup> The average live weight price for market hogs (includes roasters) is equal to the dressed weight price multiplied by a factor of 0.75.

<sup>4/</sup> Prices are for all eggs, equivalent delivered processing plant. Preliminary prices are based on processor reports from the counties of Hawaii, Kauai, and Maui. Final prices are based on processor reports from all counties.



**Commercial red meat production** for the United States totaled 4.42 billion pounds in January, up 8 percent from the 4.09 billion pounds produced in January 2007.

**Beef production**, at 2.23 billion pounds, was 3 percent above the previous year. Cattle slaughter totaled 2.90 million head, up 4 percent from January 2007. The average live weight was up 1 pound from the previous year, at 1,291 pounds.

**Veal production** totaled 11.3 million pounds, 21 percent below January a year ago. Calf slaughter totaled 71,500 head, 4 percent below January 2007. The average live weight was down 55 pounds from last year, at 269 pounds.

**Pork production** totaled 2.16 billion pounds, 14 percent above the previous year. Hog kill totaled 10.6 million head, 13 percent above January 2007. The average live weight was up 2 pounds from the previous year, at 273 pounds.

**Lamb and mutton production**, at 14.8 million pounds, was 2 percent below January 2007. Sheep slaughter

totalled 213,400 head, 2 percent below last year. The average live weight was 139 pounds, unchanged from January a year ago.

**U.S. egg production** totaled 7.66 billion during January 2008, down slightly from last year. Production included 6.52 billion table eggs, and 1.14 billion hatching eggs, of which 1.07 billion were broiler-type and 67 million were egg-type. The total number of layers during January 2008 averaged 345 million, down 1 percent from last year. January egg production per 100 layers was 2,220 eggs, up 1 percent from January 2007.

All layers in the U.S. on February 1, 2008 totaled 345 million, down 1 percent from last year. The 345 million layers consisted of 284 million layers producing table or market type eggs, 57.7 million layers producing broiler-type hatching eggs, and 2.84 million layers producing egg-type hatching eggs. Rate of lay per day on February 1, 2008, averaged 70.8 eggs per 100 layers, up slightly from February 1, 2007. ■

Excerpts from *Livestock Slaughter* (February 22, 2008) and *Chickens and Eggs* (February 29, 2008) releases.



*The Economics of Food, Farming, Natural Resources, and Rural America*

**Beef/Cattle:** Lower inventories, especially beef cows, beef replacement heifers, and feeder cattle available for placement in 2008, pave the way for reduced beef supplies in 2008. Domestic economic weakness will contribute to negative pressure on the beef and cattle sectors. Weather and trade will play significant roles in domestic supply and price volatility.

**Beef/Cattle Trade:** Beef imports decline as heavy cow slaughter and a weak dollar lower the demand for foreign beef. Exports have also slowed in part due to global economic conditions. Imports of live cattle from Canada continue to be strong in 2008.

**Pork/Hogs:** Larger-than-expected hog slaughter in January prompted USDA to raise its forecast for 2008 commercial pork production to 23 billion pounds, 5 percent above last year's production. For the first quarter of 2008, hog prices are expected to average between \$38 and \$40 per cwt, more than 15 percent

below a year ago. With costs of producing slaughter-ready hogs estimated in the low-to-mid \$50's per hundredweight (cwt), most hog producers are likely to operate in the red in 2008. Despite strong production increases, pork demand continues to be robust so far in 2008, as evidenced by modest increases in pork cold stocks and moderate declines in wholesale prices.

**Dairy:** Milk production will continue upward through most of 2008 lowering prices. However, a weak dollar and the small number of competing suppliers should help U.S. dairy exports and keep demand firm, despite some weakening in domestic demand.

**Poultry:** Broiler meat production in 2007 was 35.9 billion pounds, up less than 1 percent from the previous year. The outlook for 2008 is for relatively strong growth in production in the first half of the year, with production growth slowing in second-half 2008 as weaker prices dampen production



## U.S. Livestock Roundup (continued)

---

increases. The production estimate for 2008 was increased to 37.0 billion pounds, as the continuing higher numbers of chicks being placed for growout is expected to result in a higher number of birds slaughtered. Turkey meat production in 2008 is forecast at 6.1 billion pounds, up 2.6 percent from 2007. The turkey industry has continued to gradually expand in response to relatively strong prices over the last several years.

**Lamb/Sheep:** After consecutive increases in 2005 and 2006, sheep inventory has declined for the past 2 years. Liquidation in Texas was unusually high, despite improved weather conditions in 2007. The NASS Sheep

and Goats report shows the inventory of all sheep and lambs decreased in 2007, down 2 percent to 6.06 million head, a 110,000-head decline from a year earlier. Breeding sheep inventory showed the greatest decline, from 4.62 to 4.51 million head. A 1-percent decline was also seen in the 2007 lamb crop, and this is expected to result in further production declines for 2008, with production expected at around 179 million pounds. As a result, slaughter lamb prices are expected to remain strong for 2008 and average around \$88-\$94 per hundredweight.■

Excerpt from *Livestock, Dairy, & Poultry Outlook/LDP-M-164/* February 15, 2008 Economic Research Service, USDA.