



Hawaii Monthly Livestock Review

National
Agricultural
Statistics
Service

April 14, 2008

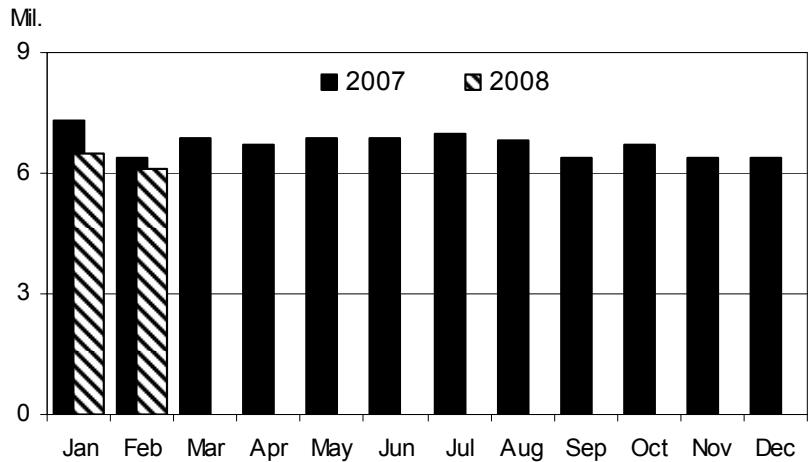
In Cooperation with the Hawaii Department of Agriculture

Hawaii Field Office · 1428 South King Street · Honolulu, HI 96814-2512 · 1-(800)-804-9514 · www.nass.usda.gov

February Egg Production Down 5 Percent From A Year Ago

Hawaii egg production totaled 6.10 million (16,944 cases) in February 2008, down 5 percent from February 2007. The average number of layers on hand during February 2008 was estimated at 353,000, down 2 percent from January 2008 and down 11 percent from February 2007. The average rate of lay during February 2008 was 1,728 per 100 layers (59.6 percent rate of lay), up 7 percent from February 2007. ■

Monthly Eggs: Total eggs produced, State of Hawaii, 2007 and 2008



CONTENTS		Page
Poultry		
Number of layers, rate of lay, and total eggs.....		1
Cattle		
Total marketings and exports.....		2
Commercial slaughter.....		3
Hogs		
Commercial slaughter.....		3
Pasture and livestock conditions		
County summaries.....		4
Dairy		
Number of milk cows, milk per cow, and total milk production....		5
Farm prices		
Farm prices for selected livestock commodities.....		6
U.S. livestock roundup		
Latest national estimates and outlook reports.....		7-8

EGGS: Number of layers, rate of lay, and production, State of Hawaii, February 2008 and year-to-date totals with comparisons.

County	Number of layers on hand during month			Rate of lay per 100 layers		Total eggs produced			
	Feb. 2007	Jan. 2008	Feb. 2008	Feb. 2007	Feb. 2008	Feb. 2007	Feb. 2008	Year-to-date	
								2007	2008
State ^{1/}	395.0	361.0	353.0	1,620	1,728	6.40	6.10	13.70	12.60

-----thousands----- -----eggs----- -----millions-----

^{1/} County data series discontinued.

Mark Hudson Director
King Whetstone, Deputy Director

Ron Nakamura, Nils Morita, Research Statisticians
Karen Lee and Joyce Jay, Statistical Assistants

Total Cattle Marketings and Exports

February Cattle Marketings Down 4 Percent From 2007

Total cattle marketings for February 2008 is estimated at 2,700 head, down 4 percent from February 2007. The entire decline in marketings during February 2008 occurred in exports of cattle and calves as commercial slaughter remained unchanged. ■

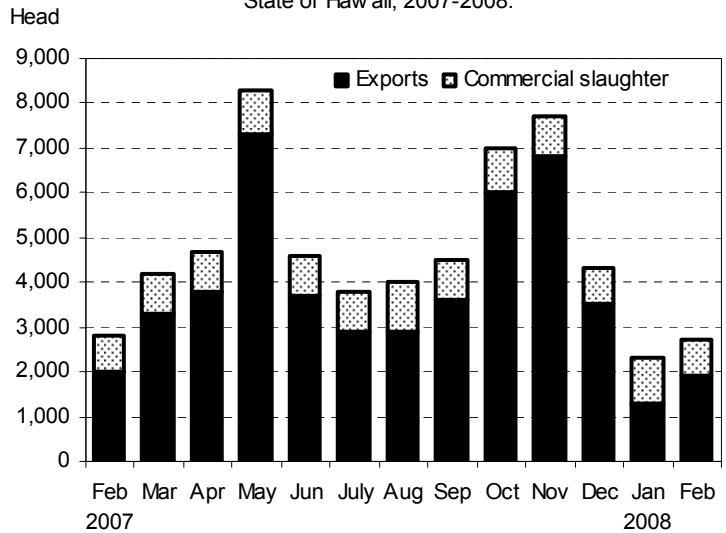
February exports down from a year ago

Exports of steers and heifers totaled 1,900 head in February 2008, down 5 percent from a year ago. Out-shipments of steers totaled 1,000 head in February 2008, up 25 percent compared to a year ago. Exports of heifers totaled 900 head, down 10 percent from January 2007. ■

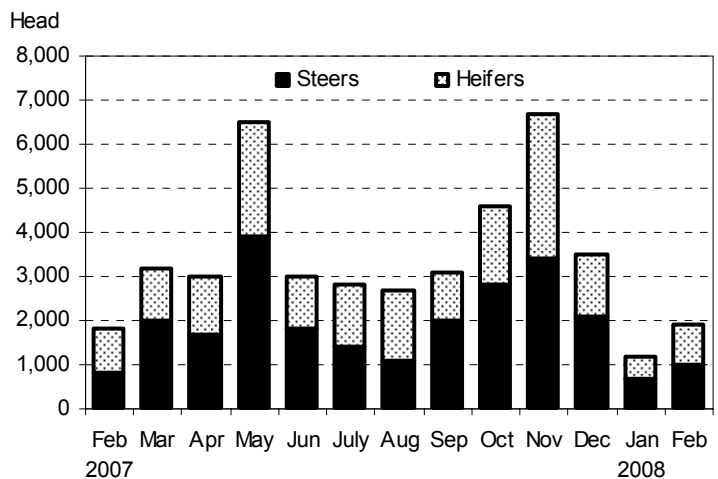
Average live weight up 6 percent

The average live weight of steers and heifers exported from Hawaii in February 2008 was 463 pounds, up 6 percent from February 2007's average live weight of 436 pounds. ■

Monthly Cattle Marketings: Number of head by type,
State of Hawaii, 2007-2008.



Monthly Cattle Exports: Number of head by type,
State of Hawaii, 2007-2008.



Cattle: Total marketings, exports by type, and average live weight of exports,
State of Hawaii, February 2008 and year-to-date comparison.

Month	Total marketings ^{1/}		Exports by type						Average live weight	
			Steers		Heifers		Total ^{2/}			
	2007	2008	2007	2008	2007	2008	2007	2008	2007	2008
February	2,800	2,700	800	1,000	1,000	900	2,000	1,900	436	463
Year-to-date ^{3/}	9,200	6,000	3,800	2,200	3,100	1,700	7,500	4,100	433	453

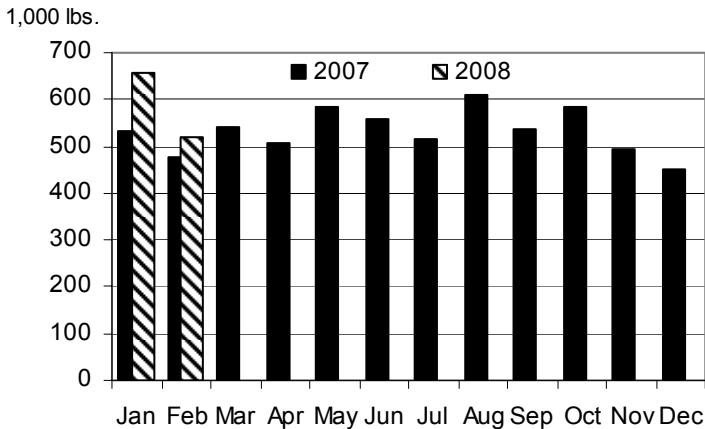
^{1/} Sum of commercial slaughter and exports. Total may not add due to rounding.

^{2/} Cattle and calves shipped out-of-State include: steers, heifers and all other classes. All other classes of animals not shown separately but included in total.

^{3/} Includes any revisions made to previous months.

Cattle and Hogs Commercial Slaughter

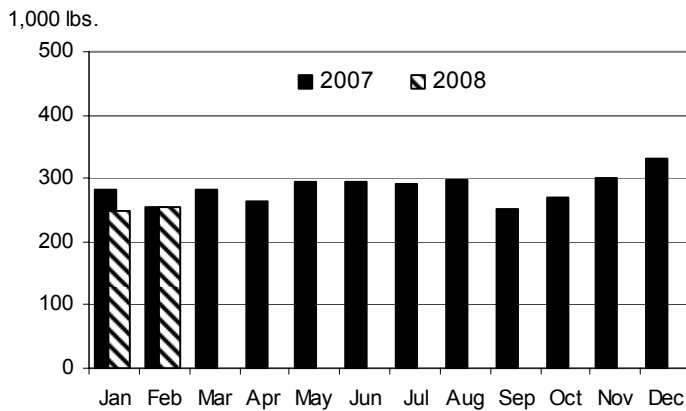
Monthly Commercial Beef Production:
Total Dress Weight, State of Hawaii, 2007 and 2008



Commercial Beef Production Up 9 Percent From Year Ago

Hawaii commercial beef production (local slaughter) during February 2008 totaled 518,000 pounds, up 9 percent from February 2007. Commercial kill totaled 800 head in February 2008, unchanged from February 2007. Average live weight per head increased 3 percent from a year ago to 1,131 pounds in February 2008. ■

Monthly Commercial Pork Production:
Total Dress Weight, State of Hawaii, 2007 and 2008



Commercial Pork Production Unchanged From Year Ago

Hawaii commercial pork production during February 2008 totaled 254,000 pounds, unchanged from February 2007. Total hog kill was 1,500 head in February 2008, unchanged from a year ago. Average live weight per head was 225 pounds in February 2008, up 3 percent from the 219-pound average of a year ago. ■

Cattle and Hogs: Total commercial slaughter, average live weight, total live weight, And total dressed weight, State of Hawaii, February 2008 and year-to-date with comparison. ^{1/}

Month	Total commercial slaughter		Average live weight		Total live weight		Total dressed weight ^{2/}	
	2007	2008	2007	2008	2007	2008	2007	2008
Cattle	----- number of head-----		----- Pounds -----		----- 1,000 pounds -----			
February	800	800	1,094	1,131	867	943	476	518
Year-to-date	1,700	1,900	--	--	1,837	2,141	1,009	1,175
Hogs ^{3/}								
February	1,500	1,500	219	225	338	339	254	254
Year-to-date	3,300	3,000	--	--	713	670	535	503

-- Not estimated.

^{1/} Excludes non-inspected farm slaughter and live cattle and calves shipped out-of-State; includes custom slaughter.

^{2/} Estimates based on 54.9 dressing percentage for cattle and 75.0 dressing percentage for hogs.

^{3/} Excludes non-inspected farm slaughter; includes custom slaughter and live hog inshipments from the mainland for slaughter.



Pasture and Livestock Conditions, March 1, 2008

Hawaii County

February Rainfall ^{1/}		
Station	2008	Normal
Honokaa	11.46"	7.20"
Kamuela upper	2.98"	5.10"
Kahuku Ranch	3.04"	2.90"
Puu Waawaa	0.61"	2.70"
Waikii	1.64"	2.30"

North Hilo, South Hilo, and Puna district pastures were in generally good condition. Substantial rain saturated pastures early in the month. Cooler winter temperatures and shorter days slowed growth, but sunnier conditions at month's end boosted new grass growth. Stock water and streams were more than adequately supplied.

Ka`u district pastures were in fair to good condition. Heavy rain early in the month and sporadic showers the rest of the month kept most pastures green and encouraged new grass growth. Coastal areas such as South Point stayed relatively brown.

North and South Kohala district pasture conditions were fair to good. Substantial rain in the first week of the month boosted soil moisture and grass growth enough to carry it throughout the month. Green pastures were evident in most areas with only the most leeward coastal areas staying relatively dry. Drier weather, coupled with cool winter temperatures and shorter days, slowed grass growth as the month came to a close.

North and South Kona district pastures in South Kona were in mostly fair to good condition. New grass growth was steady, but slower at the cooler elevations. Stock water ponds were replenished early in the month, but declined as the month progressed.

Hamakua district pastures got a boost early in the month from showers. As the month progressed, however, growth slowed and stock water supplies began to decline. Cool temperatures contributed to slower growth late in the month.

Maui County

February Rainfall ^{1/}		
Station	2008	Normal
Hana	7.28"	5.70"
Pukalani	1.69"	3.40"
Ulupalakua Ranch	1.52"	3.80"
Molokai Airport	0.97"	3.20"

Weather conditions in February did not allow for any significant re-growth in pastures. Precipitation was generally light, except for isolated windward areas. There was a good amount of available forage throughout the county. Leeward and lower elevation pastures were showing early signs of drying out. Some windward facing pastures were in good condition with an abundant amount of green forage. Pastures in the central area of Maui were in variable condition.

The windward and upper elevation pastures of Molokai continued to provide a good amount of green forage. Pastures in Hoolehua, however, were drying out. Pastures in Maunaloa were also drying out, but still able to provide an abundant amount of forage.

Honolulu County

February Rainfall ^{1/}		
Station	2008	Normal
Hakipuu Mauka	2.65"	6.70"
Lualualei	2.77"	2.60"
Waimanalo	0.61"	4.60"

Weather conditions were generally fair for pastures during February as drier than normal conditions prevailed in most areas. However, soil moisture remained adequate due to cool temperatures.

Kauai County

February Rainfall ^{1/}		
Station	2008	Normal
Kalaheo	8.38"	4.40"
Kapahi	5.25"	6.80"
Princeville Airport	3.29"	5.10"

Pastures were in fair to good condition. Showers helped, but cooler temperatures slowed growth. Cattle were in very good condition with calving having started earlier in the month. ■

^{1/} Rainfall stations were selected from the National Weather Service's Hydronet system of automated rain gauges. Featured stations may vary each month. All rainfall data has not been quality controlled, and therefore is not certified by the National Weather Service. A complete listing of Hydronet stations, rainfall gauge location maps, and other rainfall data may be found at the National Weather Service's

February Milk Production

Down 63 Percent From Year Ago

Hawaii's dairy cows produced 1.4 million pounds of milk in February 2008, down 63 percent from a year ago. ■

February's Cow Herd

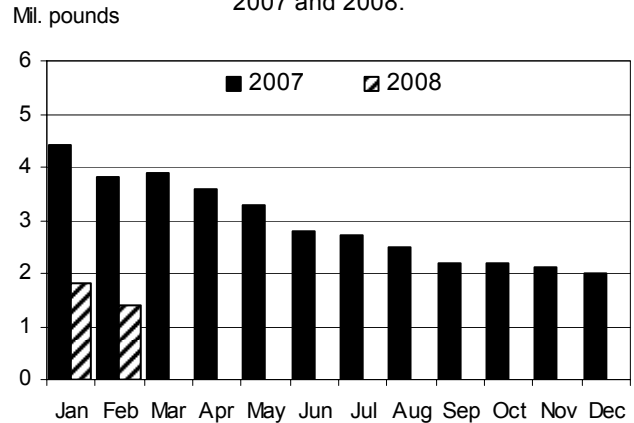
Down 49 Percent From Year Ago

Hawaii's cow herd, both dry and milking, numbered 1,900 head in February 2008, down 14 percent from January 2008 and down 49 percent from a year ago. ■

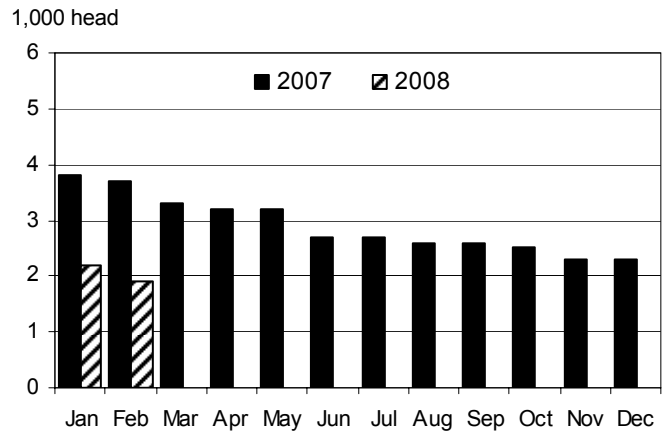
Milk Per Cow Decreases

Average milk per cow is estimated at 740 pounds for February 2008, down 26 percent from February 2007's average of 1,000 pounds per cow. ■

Milk: Monthly production, State of Hawaii, 2007 and 2008.



Milk: Average number of cows on hand during month, State of Hawaii, 2007 and 2008.



Milk: All milk cows, milk per cow, and total milk production, State of Hawaii, February 2008 and year-to-date with comparisons. ^{1/}

Area	All milk cows ^{2/}			Milk per cow		Milk production			
	Feb. 2007	Jan. 2008	Feb. 2008	Feb. 2007	Feb. 2008	Feb. 2007	Feb. 2008	Year-to-date	
								2007	2008
State	3,700	2,200	1,900	1,000	740	3,800	1,400	8,200	3,200

----- number of head ----- ----- pounds ----- ----- 1,000 pounds -----

^{1/} Figures for 2008 are preliminary.

^{2/} Includes dry cows and cows on non-commercial dairy farms.

Average Farm Prices

Farm Price Movements Were Mixed During February 2008

Steers and heifers

The average dress weight farm price for steers and heifers is estimated at 99.0 cents per pound for February 2008, up a penny from January 2008, but unchanged from a year ago.

Cows

The average dress weight farm price for cows is estimated at 53.0 cents per pound in February 2008, down two cents from January 2008. Compared to a year ago, the average dress weight farm price for cows was unchanged in February 2008.

Market hogs

The average dress weight farm price for market hogs is estimated at \$1.22 per pound for February 2008, 8 cents lower than January 2008, but 7 cents higher than a year ago.

Milk

The average farm price for milk was \$29.50 per hundredweight during February 2008, down 30 cents per hundredweight from January 2008, but \$2.60 per hundredweight higher than February 2007.

Eggs

The average farm price for a dozen eggs was \$1.39 in February 2008, up 4 cents per dozen from January 2008. Compared to a year ago, the average farm price for a dozen eggs was up 27.0 cents in February 2008. ■

Livestock Commodity Farm Prices: Average farm prices for steers and heifers, cows, market hogs, milk, and eggs, State of Hawaii, February 2008 with comparisons.

Commodity	February 2007	January 2008	February 2008
	----- cents per pound -----		
Steers and heifers ^{1/}			
Dressed weight	99.0	98.0	99.0
Live weight ^{2/}	54.4	53.8	54.4
Cows ^{1/}			
Dressed weight	53.0	55.0	53.0
Live weight ^{2/}	29.1	30.2	29.1
Market hogs ^{1/}			
Dressed weight	115.0	130.0	122.0
Live weight ^{3/}	86.3	97.5	91.5
	----- dollars per 100 pounds -----		
Milk.....	26.90	29.80	29.50
	----- cents per dozen -----		
Eggs ^{4/}	112.0	135.0	139.0

^{1/} Equivalent delivered slaughterhouse for sales in county of production and delivered shipper's dock for off-island sales.

^{2/} The average live weight price for range steers, heifers, and cows is equal to the dressed weight price multiplied by a factor of 0.549.

^{3/} The average live weight price for market hogs (includes roasters) is equal to the dressed weight price multiplied by a factor of 0.75.

^{4/} Prices are for all eggs, equivalent delivered processing plant. Preliminary prices are based on processor reports from the counties of Hawaii, Kauai, and Maui. Final prices are based on processor reports from all counties.



Commercial red meat production for the United States totaled 3.97 billion pounds in February, up 10 percent from the 3.62 billion pounds produced in February 2007.

Beef production, at 2.04 billion pounds, was 4 percent above the previous year. Cattle slaughter totaled 2.64 million head, up 3 percent from February 2007. The average live weight was up 11 pounds from the previous year, at 1,285 pounds.

Veal production totaled 11.0 million pounds, 9 percent below February a year ago. Calf slaughter totaled 69,100 head, up 4 percent from February 2007. The average live weight was down 36 pounds from last year, at 272 pounds.

Pork production totaled 1.90 billion pounds, up 16 percent from the previous year. Hog kill totaled 9.38 million head, up 16 percent from February 2007. The average live weight was up 2 pounds from the previous year, at 271 pounds.

Lamb and mutton production, at 15.0 million pounds, was up 4 percent from February 2007. Sheep slaughter totaled 211,400 head, 3 percent above last year. The

average live weight was 143 pounds, up 3 pounds from February a year ago.

U.S. egg production totaled 7.13 billion during February 2008, up 3 percent from last year. Production included 6.05 billion table eggs, and 1.07 billion hatching eggs, of which 1.01 billion were broiler-type and 64 million were egg-type. The total number of layers during February 2008 averaged 343 million, down 2 percent from last year. February egg production per 100 layers was 2,075 eggs, up 4 percent from February 2007.

All layers in the U.S. on March 1, 2008 totaled 343 million, down 2 percent from last year. The 343 million layers consisted of 282 million layers producing table or market type eggs, 57.6 million layers producing broiler-type hatching eggs, and 2.84 million layers producing egg-type hatching eggs. Rate of lay per day on March 1, 2008, averaged 72.3 eggs per 100 layers, up 1 percent from March 1, 2007. ■

Excerpts from *Livestock Slaughter* (March 20, 2008) and *Chickens and Eggs* (March 24, 2008) releases.



The Economics of Food, Farming, Natural Resources, and Rural America

Beef/Cattle: Dry conditions are spreading from Canada and Mexico into the Plains States, resulting in more cows sent to slaughter. Prices are holding steady in the cattle and beef sectors, despite competition with abundant supplies of all meats.

Beef Trade: Beef exports increased 25 percent in 2007; however, expectations for 2008 are for a more modest expansion. Annual beef imports declined for the third straight year, as heavy cow slaughter and a weak dollar continue into early 2008. Cattle imports are expected to increase 4 percent in 2008, primarily due to increases in imports of Canadian cattle.

Pork/Hogs: First-quarter pork production is expected to be 5.96 billion pounds, 10.5 percent above the same period last year. First-quarter prices for live equivalent 51-52 percent live hogs are expected to range between \$40 and \$41 per hundredweight (cwt), 12 percent below the same period a year ago. Stocks of frozen pork on

January 31, 2008 were 563.6 million pounds, 16 percent above year-earlier levels. Continued buildup of cold stocks may signal a slowdown in pork demand. January 2008 pork exports were more than 353 million pounds, almost 27 percent above January 2007.

Dairy: Milk yield will grow more slowly in 2008 as a near-term response to high feed prices. Milk production will continue upward through most of 2008, lowering prices. Exports will continue to figure prominently in dairy product price formation. Prices will be lower than in 2007, but not as low as they would be without exports.

Poultry: With table egg production continuing to be lower on a year-over-year basis, wholesale egg prices are forecast at \$1.50 to \$1.56 per dozen in first-quarter 2008, up over 40 percent from the previous year. With a strong increase in broiler meat production in January 2008, the estimates for first-quarter 2008 production



U.S. Livestock Roundup (continued)

was raised by 125 million pounds to 9.08 billion and the estimate for the second quarter was increased by 50 million pounds, bringing the second quarter estimate to 9.4 billion and the 2008 yearly estimate to 37.1 billion. Turkey meat production in first-quarter 2008 is estimated at 1.5 billion pounds, up 6 percent from a year earlier. Even with the higher production and increased stock levels, prices for whole turkeys were considerably higher than during the start of 2007.

Poultry Trade: Broiler exports in 2007 were a record 5.772 billion pounds, an increase of 4 percent from the old record (5.555 billion pounds in 2001) and 11 percent

higher than in 2006. Shipments of turkey products totaled 554 million pounds in 2007, up 1 percent from the previous year. Egg exports (shell egg and egg products) were 251 million dozen, up 24 percent from a year earlier. Broiler shipments for January 2008 totaled 456 million pounds, an increase of 15 percent from a year ago, while turkey exports totaled 47 million pounds, up 13 percent from the previous year. Egg exports in January totaled 16-million dozen, even with very strong domestic prices.■

Excerpt from *Livestock, Dairy, & Poultry Outlook/LDP-M-165/* March 19, 2008 Economic Research Service, USDA.