

Hawaii Monthly Livestock Review

In cooperation with:



Agricultural Development Division

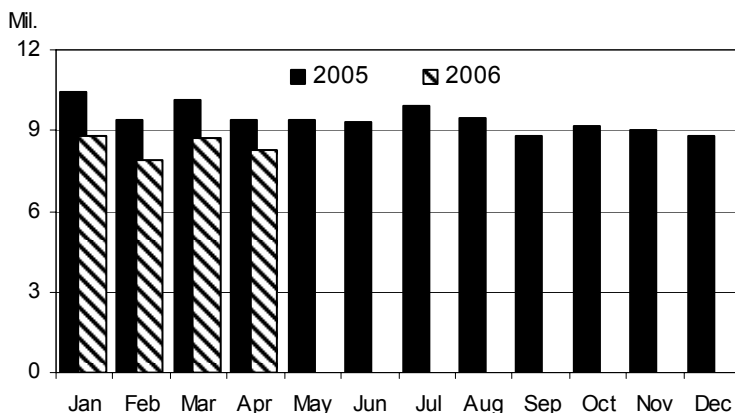
July 31, 2006

CONTENTS		Page
Poultry		
<i>Number of layers, rate of lay, and total eggs.....</i>		1
Cattle		
<i>Total marketings and exports.....</i>		2
<i>Commercial slaughter.....</i>		3
Hogs		
<i>Commercial slaughter.....</i>		3
Pasture and livestock conditions		
<i>County summaries.....</i>		4
Dairy		
<i>Number of milk cows, milk per cow, and total milk production....</i>		5
Farm prices		
<i>Farm prices for selected livestock commodities.....</i>		6
U.S. livestock roundup		
<i>Latest national estimates and outlook reports.....</i>		7-8

March Egg Production Down 14 Percent From A Year Ago

Hawaii egg production totaled 8.7 million (24,167 cases) in March 2006, down 14 percent from March 2005. The average number of layers on hand during March 2006 was estimated at 467,000, down 2 percent from February and down 8 percent from March 2005. The average rate of lay during March 2006 was 1,863 per 100 layers (60.1 percent rate of lay), down 7 percent from March 2005. ■

Monthly Eggs: Total eggs produced, State of Hawaii, 2005 and 2006



EGGS: Number of layers, rate of lay, and production, by counties, State of Hawaii, May 2006 and year-to-date totals with comparisons.

County	Number of layers on hand during month			Rate of lay per 100 layers		Total eggs produced			
	May 2005	Apr. 2006	May 2006	May 2005	May 2006	May 2005	May 2006	Year-to-date	
								2005	2006
	----- thousands -----			----- eggs -----		----- millions -----			
Hawaii/Kauai/Maui	110.0	88.0	85.7	1,735	1,939	1.91	1.67	11.00	8.30
Honolulu	376.0	373.0	360.3	1,993	1,841	7.49	6.63	37.70	33.70
State ^{1/}	486.0	461.0	446.0	1,934	1,861	9.40	8.30	48.70	42.00

^{1/} State totals may not add due to rounding.

Mark Hudson, Director
Steve Gunn, Deputy Director

Ron Nakamura, Nils Morita, and Regina Hidano, Research Statisticians
Karen Lee and Joyce Jay, Statistical Assistants

Monthly Hawaii Livestock Review is published by the USDA, NASS, Hawaii Field Office, 1428 S. King St., Honolulu, HI 96814-2512, Telephone: (808) 973-9588. Publications are available by subscription or on the internet at http://www.nass.usda.gov/Statistics_by_State/Hawaii/

Total Cattle Marketings and Exports

March Cattle Marketings Down 33 Percent From A Year Ago

Total cattle marketings for March 2006 is estimated at 2,700 head, down 33 percent from March 2005. Cumulative marketings for the first three months of 2006 was 11,000 head, down 17 percent from the same period a year earlier.

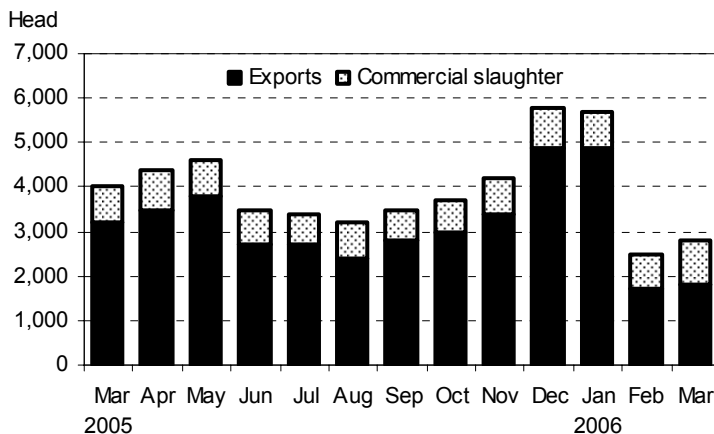
Exports remain below year ago levels

Exports of steers and heifers accounted for 67 percent of total cattle marketings in March. At 1,800 head in March 2006, exports of steers and heifers were down 44 percent from a year ago. A breakdown of March's exports shows that steers accounted for 56 percent of the total at 1,000 head, down 47 percent compared to March 2005. The amount of heifers exported in March totaled 800 head, down 38 percent compared to March 2005. Cumulative exports of steers and heifers totaled 8,400 head for the first three months of 2006, down 24 percent from the same period a year ago.

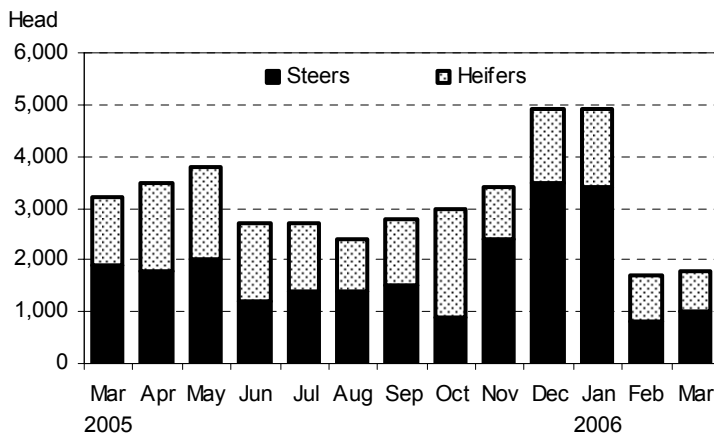
Average live weight lower

The average live weight of steers and heifers exported from Hawaii in March 2006 was 434 pounds, down 10 pounds or 2 percent from a year ago. ■

Monthly Cattle Marketings: Number of head by type, State of Hawaii, 2005-2006.



Monthly Cattle Exports: Number of head by type, State of Hawaii, 2005-2006.



Cattle: Total marketings, exports by type, and average live weight of exports, State of Hawaii, May 2006 and year-to-date comparison.

Month	Total marketings ^{1/}		Exports by type ^{2/}							
			Steers		Heifers		Total ^{3/}		Average live weight	
	2005	2006	2005	2006	2005	2006	2005	2006	2005	2006
May	4,600	5,000	2,000	2,200	1,800	1,900	3,800	4,100	430	392
Year-to-date ^{4/}	22,500	19,500	10,100	8,800	8,200	6,300	18,800	15,200	448	423

^{1/} Sum of commercial slaughter and exports.

^{2/} Cattle calves shipped out-of-State are classified as steers and heifers; all other classes of animals are not included. Annual totals for all classes of exports are available in the *Statistics of Hawaiian Agriculture* yearbook.

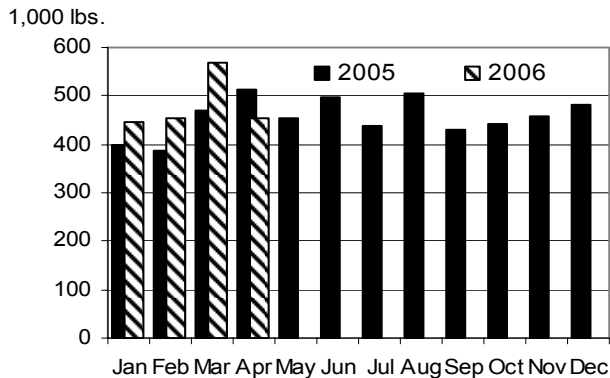
^{3/} Steers and heifers may not add to total due to rounding.

^{4/} Includes any revisions made to previous months.



Cattle and Hogs Commercial Slaughter

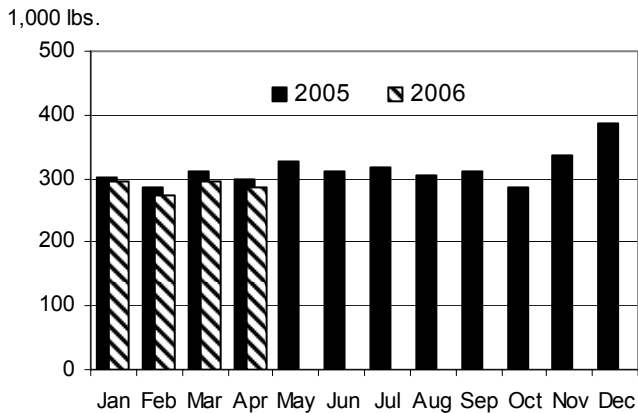
Monthly Commercial Beef Production:
Total Dress Weight, State of Hawaii,
2005 and 2006



Commercial Beef Production Up 21 Percent

Hawaii commercial beef production (local slaughter) during March 2006 totaled 567,000 pounds, up 21 percent from March 2005. Commercial kill totaled 1,000 head in March, up 25 percent from the March 2005 total of 800 head. Average live weight per head increased to 1,080 pounds in March 2006, 1 percent heavier than in March 2005. Cumulative beef production for the first three months of 2006 was 1,468,000 pounds, up 18 percent from the same period a year ago. ■

Monthly Commercial Pork Production:
Total Dress Weight, State of Hawaii, 2005 and 2006



Commercial Pork Production Down 5 Percent

Hawaii commercial pork production during March 2006 totaled 296,000 pounds, down 5 percent from March 2005. Total hog kill was 1,800 head in March 2006, down 200 head or 10 percent from a year ago. Average live weight per head increased 7 percent from a year ago in March 2006 to 221 pounds. Cumulative hog production for the first three months of 2006 was 866,000 pounds, down 4 percent from the same period a year ago. ■

Cattle and Hogs: Total commercial slaughter, average live weight, total live weight, And total dressed weight, State of Hawaii, May 2006 and year-to-date with comparison. ^{1/}

Month	Total commercial slaughter		Average live weight		Total live weight		Total dressed weight ^{2/}	
	2005	2006	2005	2006	2005	2006	2005	2006
Cattle	----- number of head-----		----- Pounds -----		----- 1,000 pounds -----			
May	800	1,000	1,098	1,047	825	1,034	453	568
Year-to-date	3,700	4,300	--	--	4,016	4,532	2,205	2,488
Hogs ^{3/}								
May	2,000	2,000	224	220	437	431	328	323
Year-to-date	9,800	8,900	--	--	2,034	1,966	1,526	1,475

-- Not estimated.

^{1/} Excludes non-inspected farm slaughter and live cattle and calves shipped out-of-State; includes custom slaughter.

^{2/} Estimates based on 54.9 dressing percentage for cattle and 75.0 dressing percentage for hogs.

^{3/} Excludes non-inspected farm slaughter; includes custom slaughter and live hog shipments from the mainland for slaughter.



Pasture and Livestock Conditions, June 1, 2006

Hawaii County

April Rainfall ^{1/}		
Station	2006	Normal
Honokaa	9.45	9.90
Kamuela upper	5.67	6.90
Kahuku Ranch	1.31	5.10
Puu Waawaa	0.01	3.00
Waikii	0.49	2.30

Hilo and Puna district pastures remained in fair to good condition. The growth of new grass improved with the advent of warmer temperatures, continued showers, and longer daylight hours. Cattle and calves were in good condition and no unusual losses were reported.

Ka`u district pastures showed new growth in most areas and especially in the warmer coastal sections. Above normal amounts of rain enabled pastures to green-up. Cattle and calves were in generally good condition.

North and South Kona districts pastures benefited from light showers. The return of trade wind showers kept windward area pastures in good condition. Leeward Kohala pastures were generally dry, however, residual moisture from the previous month kept pastures green. North Kohala pastures had good feed supplies and new grass prospects were generally good. Coastal pastures in South Kohala were dry. Stock water supplies were adequate. Overall, cattle and calves were in fair to good condition. Spring calving was taking place. Newborn calves were healthy.

North and South Kohala districts pastures were in fair condition. Sunny skies and longer days helped improve grass growth. Rainfall tapered off in April, but remained above normal in most areas. Cattle and calves were in good condition.

Hamakua district pastures were in fair to good condition. Sunny skies

and longer days helped improve grass growth. Rainfall remained above normal in most areas. Cattle and calves were in good condition.

Maui County

April Rainfall ^{1/}		
Station	2006	Normal
Hana Airport	5.94	7.50
Pukalani	0.53	2.60
Ulupalakua ranch	0.80	2.30
Molokai Airport	0.46	2.20

Warmer temperatures, sufficient rainfall, and extended daylight hours provided good growing conditions for pastures on Maui Island. In Hana, pastures were in good condition. Pastures in Ulupalakua received some showers, but additional rains are needed in the lower elevations. Makawao pastures were in fair to good condition. An increase in fireweed was noticed in some pastures. Pastures along the base of the West Maui Mountains, from Waikapu to Maalaea, showed a good amount of forage. Some of these pastures were irrigated. On Molokai, pastures were in fair to good condition. The east-end pastures benefited from frequent showers. West-end pastures continued to provide more feed than is needed for the cattle in the area. Overall, cattle in Maui County was in generally good condition. Water supplies were also reported good.

Honolulu County

April Rainfall ^{1/}		
Station	2006	Normal
Hakipuu mauka	4.37	6.40
Lualualei	0.19	1.80
Waimanalo	0.70	3.20

Most of April's showers fell in the interior areas of the island; away from pastures. Despite the below normal level of rainfall, pastures remained in generally good

condition having been sustained by previous showers. Cattle and calves were in good condition.

Kauai County

April Rainfall ^{1/}		
Station	2006	Normal
Kalaheo	2.69	4.90
Kapahi	5.91	7.40
Princeville airport	3.28	6.20

Rainfall dropped noticeably in most areas of Kauai during April. Sunny skies and a resumption of trade winds helped to dry-out pastures from a wet March. However, relatively cool temperatures continued to slow grass growth. Prospects for new grass have improved with the advent of sunnier skies. Condition of cattle and calves improved from March. No unusual death losses were noticed. ■

^{1/} Rainfall stations were selected from the National Weather Service's Hydronet system of automated rain gages. Featured stations may vary each month. All rainfall data has not been quality controlled, and therefore is not certified by the National Weather Service. A complete listing of Hydronet stations, rainfall gage location maps, and other rainfall data may be found at the National Weather Service's hydrology homepage:

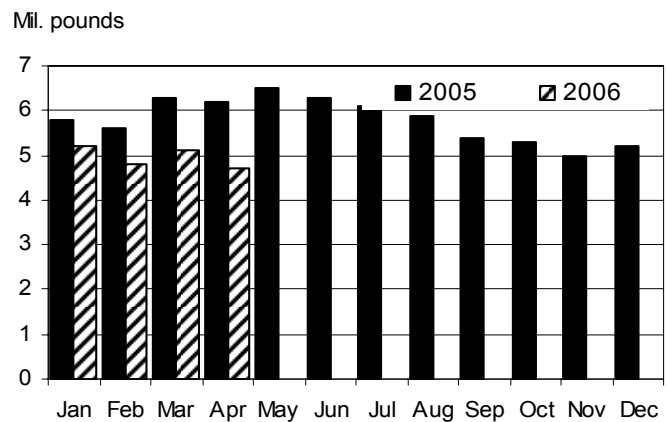
<http://www.prh.noaa.gov/hnl/pages/hydrology.php>

Milk Cows and Milk Production

March milk production down 19 percent

Hawaii's dairy cows produced 5.1 million pounds of milk in March 2006, up 6 percent from February but down 19 percent from a year ago. Cumulative milk production for the first three months of 2006 totaled 15.1 million pounds, down 15 percent from the same period a year ago. ■

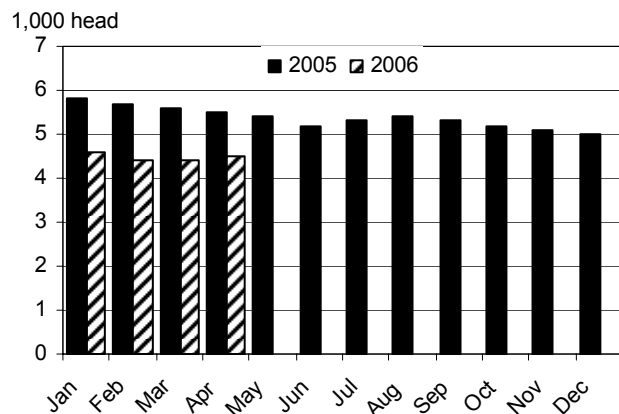
Milk: Monthly production, State of Hawaii, 2005 and 2006.



Cow herd down 21 percent from year ago

Hawaii's cow herd, both dry and milking, numbered 4,400 head in March 2006, down 21 percent from a year ago but unchanged from the previous month. Partially offsetting the decline in cow numbers from a year ago was a 3 percent increase in milk per cow production to an average of 1,160 pounds during March 2006. ■

Milk: Average number of cows on hand during month, State of Hawaii, 2005 and 2006.



Milk: All milk cows, milk per cow, and total milk production, State of Hawaii, May 2006 and year-to-date with comparisons. ^{1/}

Area	All milk cows ^{2/}			Milk per cow		Milk production			
	May 2005	Apr. 2006	May 2006	May 2005	May 2006	May 2005	May 2006	Year-to-date	
	----- number of head -----			----- pounds -----		----- 1,000 pounds -----			
State	5,400	4,500	4,500	1,205	1,130	6,500	5,100	30,400	24,900

^{1/} Figures for 2006 are preliminary.

^{2/} Includes dry cows and cows on non-commercial dairy farms.



Average Farm Prices

Farm Prices Record Mixed Changes In March

Steers and heifers

The average dress weight farm price for steers and heifers is estimated at \$1 per pound for March 2006, up 3 cents from February and 9 cents more than a year ago.

Cows

The average dress weight farm price for cows is estimated at 53.0 cents per pound for March 2006, up 1 cent from January and 2 cents more than a year ago.

Market hogs

The average dress weight farm price for market hogs is estimated at \$1.16 per pound for March 2006, 1 cent more than February but compared to a year ago, the average dress weight farm price was 8 cents lower in March 2006.

Milk

The average farm price for milk was \$25.50 per hundred weight during March 2006, down 3 percent from the previous month. Compared to a year ago, the average farm price for milk was down 6 percent from March 2005's \$27.20 per hundred weight average.

Eggs

The average farm price for a dozen eggs was 93.0 cents in March 2006, down 2 cents from February 2006 and 1 cent lower than a year ago. ■

Livestock Commodity Farm Prices: Average farm prices for steers and heifers, cows, market hogs, milk, and eggs, State of Hawaii, May 2006 with comparisons.

Commodity	May 2005	April 2006	May 2006
----- cents per pound -----			
Steers and heifers ^{1/}			
Dressed weight	93.0	97.0	100.0
Live weight ^{2/}			
Cows ^{1/}			
Dressed weight	49.0	52.0	53.0
Live weight ^{2/}			
Market hogs ^{1/}			
Dressed weight	124.0	115.0	116.0
Live weight ^{3/}			
----- dollars per 100 pounds -----			
Milk.....	27.40	25.10	24.90
----- cents per dozen -----			
Eggs ^{4/}			

^{1/} Equivalent delivered slaughterhouse for sales in county of production and delivered shipper's dock for off-island sales.

^{2/} The average live weight price for range steers, heifers, and cows is equal to the dressed weight price multiplied by a factor of 0.549.

^{3/} The average live weight price for market hogs (includes roasters) is equal to the dressed weight price multiplied by a factor of 0.75.

^{4/} Prices are for all eggs, equivalent delivered processing plant. Preliminary prices are based on processor reports from the counties of Hawaii, Kauai, and Maui. Final prices are based on processor reports from all counties.



Commercial red meat production for the United States totaled 4.05 billion pounds in May, up 9 percent from the 3.71 billion pounds produced in May 2005.

Beef production, at 2.30 billion pounds, was 11 percent above the previous year. Cattle slaughter totaled 3.04 million head, up 9 percent from May 2005. The average live weight was up 19 pounds from the previous year, at 1,241 pounds.

Veal production totaled 13.1 million pounds, 1 percent below May a year ago. Calf slaughter totaled 57,000 head, down 3 percent from May 2005. The average live weight was 2 pounds above last year, at 378 pounds.

Pork production totaled 1.72 billion pounds, up 7 percent from the previous year. Hog kill totaled 8.54 million head, 6 percent above May 2005. The average live weight was 1 pound above the previous year, at 271 pounds.

U.S. egg production totaled 7.63 billion during May 2006, up 1 percent from last year. Production included 6.52 billion table eggs, and 1.11 billion hatching eggs, of which 1.04 billion were broiler-type and 70 million were egg-type. The number of layers during May 2006 averaged 345 million, up 1 percent from last year. May egg production per 100 layers was 2,213 eggs, down slightly from May 2005.

All layers in the U.S. on June 1, 2006, totaled 343 million, up 1 percent from last year. The 343 million layers consisted of 286 million layers producing table-type eggs, 54.7 million layers producing broiler-type hatching eggs, and 2.84 million layers producing egg-type hatching eggs. Rate of lay per day on June 1, 2006, averaged 71.2 eggs per 100 layers, down slightly from June 1, 2005. ■

Excerpts from *Livestock Slaughter* (June 23, 2006) and *Chickens and Eggs* (June 23, 2006) releases.



Cattle/Beef: Second-quarter commercial beef production is expected to be 6.65 billion pounds, an increase of more than 7 percent over the same period last year. For 2006, production is expected to be 26.1 billion pounds, almost 6 percent more than in 2005. Prices for 1,100-1,300 pound Choice steers are expected to average between \$80-\$81 per hundredweight (cwt) for the second quarter, and between \$81-\$84 for the year. Retail beef prices will likely average in the high \$3.90s per pound this year, down from \$4.09 per pound in 2005. Consumers' per capita beef consumption, at 66.9 pounds, increased more than 2 percent over 2005.

Hogs/Pork: Commercial pork production is expected to be 5.1 billion pounds in the second quarter and 21.3 billion pounds for 2006, increases of 1 percent and 2.8 percent, over year-earlier periods, respectively. Pork

exports continue to provide demand support, with April exports almost 2 percent above April 2005, and cumulated (January-April) exports at 1.026 billion pounds, 16 percent above the same period last year. Prices of live equivalent 51-52 percent lean hogs are expected to average between \$46 and \$47 per cwt for the second quarter, almost 11 percent below a year ago, while 2006 prices will likely average between \$43 and \$44, 13 percent below 2005. Retail pork prices are expected to average in the high \$2.70s per pound this year, almost 2 percent lower than 2005. Per capita 2006 pork consumption is expected to be 49.9 pounds, slightly lower than last year.

Poultry Trade: U.S. broiler and turkey exports were lower in April, compared with April 2005. U.S. broiler shipments for April 2006 totaled 441 million pounds, down 6 percent from April 2005, largely due to lower shipments to Russia. U.S. turkey exports totaled 35



U.S. Livestock Roundup (continued)

million pounds, down 29 percent from April 2005 due to lower shipments to Mexico. Next year, U.S. broiler exports are expected to increase almost 2 percent, while U.S. turkey exports are expected to increase almost 4 percent.

Poultry: Broiler production for 2006 and 2007 are unchanged from last month. Production in the second quarter of 2006 is estimated at 9.1 billion pounds, up 1.9 percent from a year earlier. The slow down in broiler meat production has begun to lower cold storage holdings and has put upward pressure on broiler prices. Prices for whole hen turkeys remained strong in May at 71 cents per pound, up 6 percent from a year earlier and over 7 percent higher than in May 2004.

Dairy: Production of milk is set to rise in both 2006 and 2007. However, the expansion rate in production is expected to be well below the rates of 2004 and 2005 as the industry slowly adjusts supplies to underlying demand. The price outlook for milk and most products is downward in 2006 with a slight recovery expected in 2007 based on a modest increase in demand for dairy

products. Prices both this year and next will generally be well below those of 2004 and 2005.

Sheep/Lamb: ■

Excerpt from *Livestock, Dairy, & Poultry Outlook/LDP-M-143*/June 15, 2006 Economic Research Service, USDA.