



Hawaii Monthly Livestock Review

National Agricultural Statistics Service

May 7, 2009

In Cooperation with the Hawaii Department of Agriculture

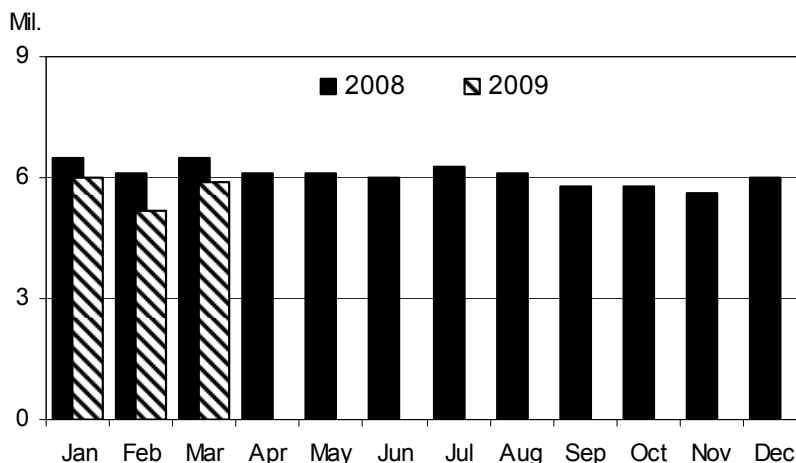
Hawaii Field Office · 1428 South King Street · Honolulu, HI 96814-2512 · 1-(800)-804-9514 · www.nass.usda.gov

CONTENTS		Page
Poultry		
<i>Number of layers, rate of lay, and total eggs.....</i>		1
Cattle		
<i>Total marketings and exports.....</i>		2
<i>Commercial slaughter.....</i>		3
Hogs		
<i>Commercial slaughter.....</i>		3
Pasture and livestock conditions		
<i>County summaries.....</i>		4
Dairy		
<i>Number of milk cows, milk per cow, and total milk production....</i>		5
Farm prices		
<i>Farm prices for selected livestock commodities.....</i>		6
U.S. livestock roundup		
<i>Latest national estimates and outlook reports.....</i>		7-8

March Egg Production Down 9 Percent From A Year Ago

Hawaii egg production totaled 5.90 million (16,389 cases) in March 2009, up 13 percent from February but down 9 percent from March 2008. The decline in egg production from a year ago is due to a combination of 4 percent fewer layers and a 5 percent lower rate of lay. Layers on hand in March 2009 totaled 337,000 and the rate of lay averaged 1,751 eggs per 100 layers. ■

Monthly Eggs: Total eggs produced, State of Hawaii, 2008 and 2009



EGGS: Number of layers, rate of lay, and production, State of Hawaii, March 2009 and year-to-date totals with comparisons.

County	Number of layers On hand during month			Rate of lay per 100 layers		Total eggs produced			
	Mar. 2008	Feb. 2009	Mar. 2009	Mar. 2008	Mar. 2009	Mar. 2008	Mar. 2009	Year-to-date	
								2008	2009
State ^{1/}	352.0	334.0	337.0	1,847	1,751	6.50	5.90	19.10	17.10

-----thousands----- -----eggs----- -----millions-----

^{1/} County data series discontinued.

Mark Hudson Director
King Whetstone, Deputy Director

Ron Nakamura, Research Statistician
Karen Lee and Joyce Jay, Statistical Assistants

Total Cattle Marketings and Exports

Total Cattle Marketings Up 11 Percent In March

Cattle marketings totaled 2,000 head for March 2009, up 11 percent from February but down 38 percent from March 2008. ■

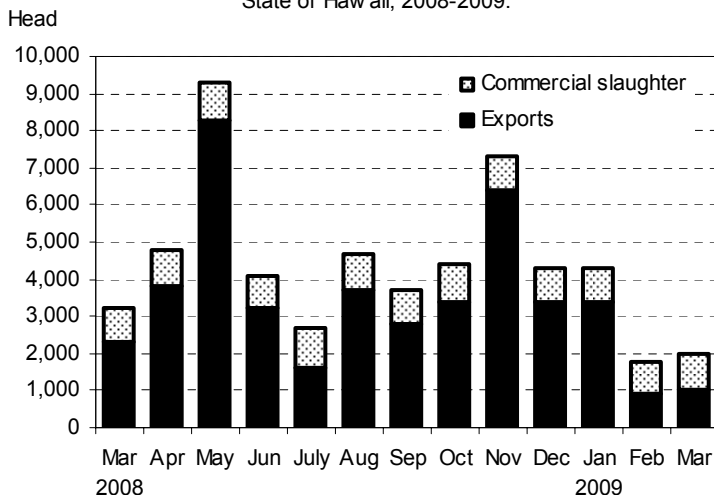
March cattle exports up 11 percent from February

Out-of-State shipments of steers and heifers totaled 1,000 head in March 2009, up 11 percent from the 900 head shipped-out in February, but down 57 percent compared to a year ago. Based on State export certificates and reports from shippers, exports of steers totaled 400 head in March, down 20 percent from February and down 67 percent from a year ago. Meanwhile, exports of heifers increased 38 percent from February to 550 head in March. Cumulative exports for the first quarter of 2009 totaled 5,300 head, down 30 percent from a year ago. ■

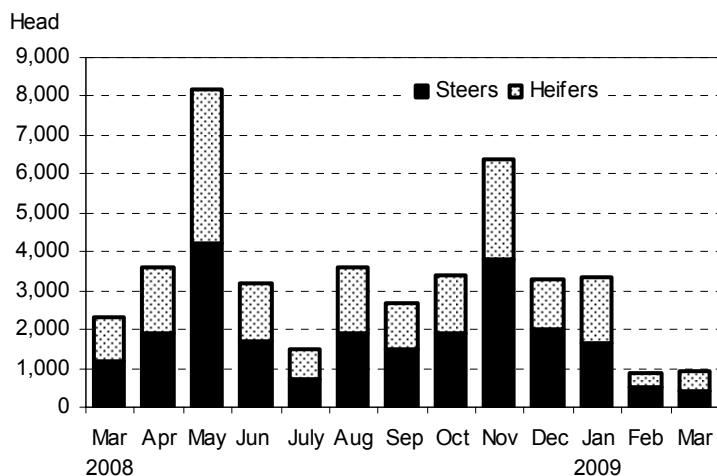
Average live weight of exported cattle lighter than year ago

The average live weight of steers and heifers exported from Hawaii during March 2009 was 417 pounds, 11 percent or 54 pounds lighter than a year ago. ■

Monthly Cattle Marketings: Number of head by type, State of Hawaii, 2008-2009.



Monthly Cattle Exports: Number of head by type, State of Hawaii, 2008-2009.



Cattle: Total marketings, exports by type, and average live weight of exports, State of Hawaii, March 2009 and year-to-date comparison.

Month	Total marketings ^{1/}		Exports by type						Average live weight	
			Steers		Heifers		Total ^{2/}			
	2008	2009	2008	2009	2008	2009	2008	2009	2008	2009
March	3,200	2,000	1,200	400	1,100	550	2,300	1,000	471	417
Year-to-date ^{3/}	10,300	8,100	3,900	2,550	3,400	2,650	7,600	5,300	459	410

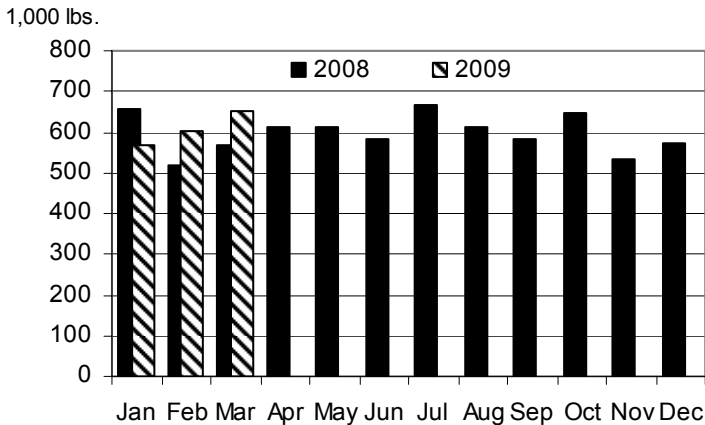
^{1/} Sum of commercial slaughter and exports. Total may not add due to rounding.

^{2/} Cattle and calves shipped out-of-State include: steers, heifers and all other classes. All other classes of animals not shown separately but included in total.

^{3/} Includes any revisions made to previous months.

Cattle and Hogs Commercial (Local) Slaughter

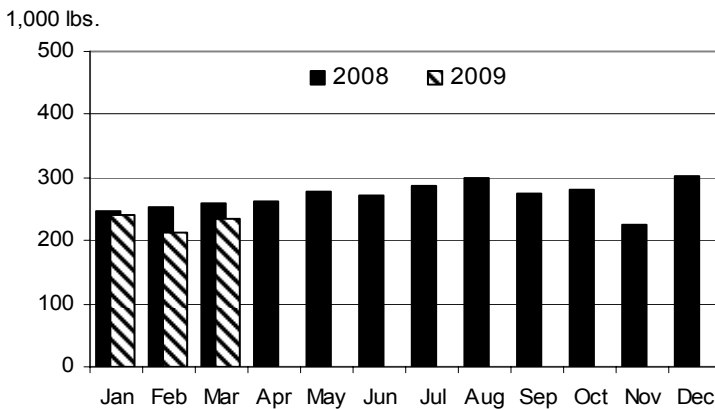
Monthly Commercial Beef Production:
Total Dress Weight, State of Hawaii, 2008 and 2009



Local Commercial Beef Production Up 9 Percent From February

Hawaii commercial beef production (local slaughter) during March 2009 totaled 654,000 pounds, up 9 percent from February and 15 percent more than a year ago. The increase from a year ago is attributed to a 11 percent increase in the commercial kill to 1,000 head in March 2009 and a 11 percent increase in the average live weight per head to 1,221 pounds. Total local commercial slaughter for the first quarter of 2009 is estimated at 1.8 million pounds, up 5 percent from the first quarter of last year. ■

Monthly Commercial Pork Production:
Total Dress Weight, State of Hawaii, 2008 and 2009



Commercial Pork Production Up 11 Percent From February

Hawaii commercial pork production during March 2009 totaled 235,000 pounds, up 11 percent from February but down 10 percent from a year ago. Number of hogs slaughtered increased 8 percent from February to 1,300 head in March and average live weight, at 234 pounds, increased 1 percent from the previous month. Cumulative pork production for the first quarter of 2009 totaled 689,000 pounds, down 10 percent from the first three-month period in 2008. ■

Cattle and Hogs: Total commercial slaughter, average live weight, total live weight, And total dressed weight, State of Hawaii, March 2009 and year-to-date with comparison. ^{1/}

Month	Total commercial slaughter		Average live weight		Total live weight		Total dressed weight ^{2/}	
	2008	2009	2008	2009	2008	2009	2008	2009
Cattle	----- number of head-----		----- Pounds -----		----- 1,000 pounds -----			
March	900	1,000	1,096	1,221	1,037	1,192	569	654
Year-to-date	2,700	2,800	--	--	3,178	3,324	1,745	1,825
Hogs ^{3/}								
March	1,500	1,300	231	234	346	313	260	235
Year-to-date	4,500	3,900	--	--	1,016	918	762	689

-- Not estimated.

^{1/} Excludes non-inspected farm slaughter and live cattle and calves shipped out-of-State; includes custom slaughter.

^{2/} Estimates based on 54.9 dressing percentage for cattle and 75.0 dressing percentage for hogs.

^{3/} Excludes non-inspected farm slaughter; includes custom slaughter and live hog inshipments from the mainland for slaughter.



Pasture and Livestock Conditions, April 1, 2009

Hawaii County

March Rainfall ^{1/}		
Station	2009	Normal
Honokaa	12.66"	9.90"
Kamuela upper	5.68"	6.70"
Kahuku Ranch	2.08"	4.90"
Pahala	9.38"	6.30"
Waikii	1.42"	2.90"

North Hilo, South Hilo, and Puna district pastures remained saturated, but grass growth was slowed by cool temperatures and cloudy skies. Overall, pasture conditions were normal or better than normal. Cattle and calves were in fair to good condition.

Ka`u district pastures were in fair to good condition. New grass growth was evident in most areas. The mid and upper elevation areas on the leeward side of Mauna Loa were still experiencing drought-like conditions. Cattle and calves were in generally fair to good condition. No unusual deaths or diseases were reported.

North and South Kohala district pastures continued to show improvement. Green grass was most evident in windward areas, but also present in all areas. Many pastures were still recovering from the previous drought and a lack of deep soil moisture was limiting new grass growth. Rains in the interior sections of leeward areas of Mauna Kea spurred an increase in fireweeds.

North and South Kona district pastures were in variable condition. New grass was evident in areas that received mostly light showers. Pastures in the mid to upper elevations were still showing signs of stress from the previously dry conditions. However, some improvement was noticed even in these pastures.

Hamakua district pastures were in fair to good condition. Daily showers

led to greener pastures and new growth in most areas of the district. The higher elevations received less rainfall and grass growth was slowed by the relatively dry conditions. Livestock conditions were fair and improving. No unusual deaths were reported, but parasite issues have been reported.

Maui County

March Rainfall ^{1/}		
Station	2009	Normal
Hana	9.82"	9.10"
Omaopio ^{2/}	2.72"	3.25"
Pukalani	2.23"	3.30"
Ulupalakua	1.69"	3.40"
Molokai Airport	1.27"	3.70"

Pastures on Maui benefited from a mix of intermittent showers and sunshine. Cool temperatures, however, prevented optimal grass growth in most areas. Windward area pastures received the bulk of March's rainfall and saw an increase in available green forage. Haiku pastures were in fair to good condition. Pasture grass in Makawao also benefited from the recent weather and were able to provide a good amount of green forage. However, there was a proliferation of fireweed from Makawao towards Kula. Pastures around Ulupalakua showed continued regrowth and were in generally good condition with minimal amounts of fireweed. Central Maui pastures were relatively dry and showed signs of decreased growth.

Pastures on Molokai were in generally fair condition. Upper elevation pastures in Kala'e continued to provide a good amount of forage. Eastern pastures benefited from occasional showers. Pastures in the west end of Molokai also showed increased regrowth due to showers. These pastures are grazed more intensely than other areas of the island.

Honolulu County

March Rainfall ^{1/}		
Station	2009	Normal
Hakipuu Mauka	8.50"	9.10"
Lualualei	1.51"	3.00"
Waimanalo	5.55"	3.60"

Pasture conditions ranged from fair to good. Most windward areas experienced near to above normal amounts of rain while central and leeward areas were relatively dry. Cool temperatures slowed grass growth.

Kauai County

March Rainfall ^{1/}		
Station	2009	Normal
Kalaheo	6.33"	5.60"
Kapahi	8.03"	8.20"
Princeville Airport	8.34"	6.40"

Rainfall totals were mixed on Kauai during March. Most stations record near or above normal readings with some recorded below normal totals. Some pastures received a lot of rain making conditions very wet. Overall pastures were in fair to good condition. ■

^{1/} Rainfall stations were selected from the National Weather Service's Hydronet system of automated rain gauges. Featured stations may vary each month. All rainfall data has not been quality controlled, and therefore is not certified by the National Weather Service. A complete listing of Hydronet stations, rainfall gauge location maps, and other rainfall data may be found at the National Weather Service's hydrology homepage:
<http://www.prh.noaa.gov/hnl/pages/hydrology.php>

^{2/} Omaopio rainfall data courtesy of Hawaiian Commercial and Sugar Company, a division of Alexander & Baldwin, Inc. Normal reading represents the 5-year period 2004-2008.



March Milk Production

Up 20 Percent From Year Ago

Hawaii's dairy cows produced 1.8 million pounds of milk in March 2009, up 20 percent from March 2008's 1.5 million pounds. The improvement from a year ago is due to higher milk per cow rates brought about by improved pasture conditions, feed, and herd quality. ■

Size Of Cow Herd

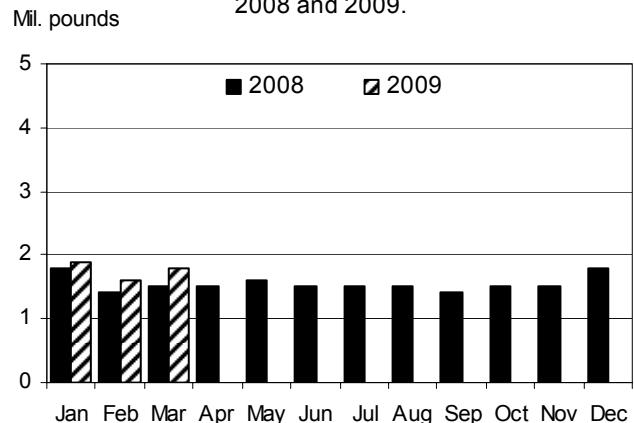
Down 17 Percent From Year Ago

Hawaii's cow herd, both dry and milking, numbered 1,500 head in March 2009; down 17 percent from March 2008. The decline from last March is due to a reduction in herd size at one of the two commercially licensed dairy herds left in Hawaii. ■

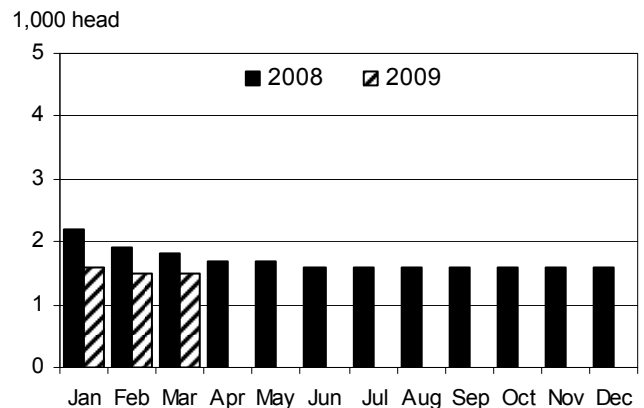
Milk Per Cow Increases

Average milk per cow is estimated at 1,200 pounds for March 2009, up 9 percent from February and 40 percent higher than March 2008. ■

Milk: Monthly production, State of Hawaii, 2008 and 2009.



Milk: Average number of cows on hand during month, State of Hawaii, 2008 and 2009.



Milk: All milk cows, milk per cow, and total milk production, State of Hawaii, March 2009 and year-to-date with comparisons. ^{1/}

Area	All milk cows ^{2/}			Milk per cow		Milk production			
	Mar. 2008	Feb. 2009	Mar. 2009	Mar. 2008	Mar. 2009	Mar. 2008	Mar. 2009	Year-to-date	
	----- number of head -----			----- pounds -----		----- 1,000 pounds -----			
State	1,800	1,500	1,500	860	1,200	1,500	1,800	4,700	5,300

^{1/} Figures for 2009 are preliminary.

^{2/} Includes dry cows and cows on non-commercial dairy farms.

Average Farm Prices

Livestock Farm Prices Hold Steady

Steers and heifers

The average dress weight farm price for steers and heifers is estimated at 110.0 cents per pound for March 2009, unchanged from February 2009 but 5.0 cents per pound higher than in March 2008.

Cows

The average dress weight farm price for cows is estimated at 54.0 cents per pound in March 2009, unchanged from February 2009 but up 4 cents per pound compared to March 2008.

Market hogs

The average dress weight farm price for market hogs is estimated at \$1.30 per pound for March 2009, unchanged from February 2009 but 5.0 cents per pound lower than a year ago.

Milk

The average farm price for milk was \$35.40 per hundredweight during March 2009, unchanged from February 2009 but \$6.10 per hundredweight higher than a year ago.

Eggs

The average farm price for a dozen eggs was \$1.60 in March 2009, down 3.0 cents per dozen from February 2009 but 18.0 cents per dozen higher than a year ago. ■

Livestock Commodity Farm Prices: Average farm prices for steers and heifers, cows, market hogs, milk, and eggs, State of Hawaii, March 2009 with comparisons.

Commodity	March 2008	February 2009	March 2009
----- cents per pound -----			
Steers and heifers ^{1/}			
Dressed weight	105.0	110.0	110.0
Live weight ^{2/}	57.6	60.4	60.4
Cows ^{1/}			
Dressed weight	50.0	54.0	54.0
Live weight ^{2/}	27.5	29.6	29.6
Market hogs ^{1/}			
Dressed weight	135.0	130.0	130.0
Live weight ^{3/}	101.3	97.5	97.5
----- dollars per 100 pounds -----			
Milk.....	29.30	35.40	35.40
----- cents per dozen -----			
Eggs ^{4/}	142.0	163.0	160.0

^{1/} Equivalent delivered slaughterhouse for sales in county of production and delivered shipper's dock for off-island sales.

^{2/} The average live weight price for range steers, heifers, and cows is equal to the dressed weight price multiplied by a factor of 0.549.

^{3/} The average live weight price for market hogs (includes roasters) is equal to the dressed weight price multiplied by a factor of 0.75.

^{4/} Prices are for all eggs, equivalent delivered processing plant. Preliminary prices are based on processor reports from the counties of Hawaii, Kauai, and Maui. Final prices are based on processor reports from all counties.



Commercial red meat production for the United States totaled 4.14 billion pounds in March, up 1 percent from the 4.09 billion pounds produced in March 2008.

Beef production, at 2.14 billion pounds, was 2 percent above the previous year. Cattle slaughter totaled 2.73 million head, up slightly from March 2008. The average live weight was up 29 pounds from the previous year, at 1,305 pounds.

Veal production totaled 12.2 million pounds, 8 percent above March a year ago. Calf slaughter totaled 79,800 head, up 12 percent from March 2008. The average live weight was down 10 pounds from last year, at 263 pounds.

Pork production totaled 1.97 billion pounds, up slightly from the previous year. Hog kill totaled 9.65 million head, down slightly from March 2008. The average live weight was up 1 pound from the previous year, at 272 pounds.

Lamb and mutton production, at 15.9 million pounds, was down slightly from March 2008. Sheep slaughter totaled 222,000 head, 4 percent below last year. The

average live weight was 143 pounds, up 4 pounds from March a year ago.

U.S. egg production totaled 7.72 billion during March 2009, up 1 percent from last year. Production included 6.63 billion table eggs, and 1.09 billion hatching eggs, of which 1.02 billion were broiler-type and 75 million were egg-type. The total number of layers during March 2009 averaged 340 million, down slightly from last year. March egg production per 100 layers was 2,269 eggs, up 1 percent from March 2008.

All layers in the U.S. on April 1, 2009 totaled 341 million, down slightly from last year. The 341 million layers consisted of 283 million layers producing table or market type eggs, 54.3 million layers producing broiler-type hatching eggs, and 3.07 million layers producing egg-type hatching eggs. Rate of lay per day on April 1, 2009, averaged 73.9 eggs per 100 layers, up 2 percent from April 1, 2008.■

Excerpts from *Livestock Slaughter* (April 24, 2009) and *Chickens and Eggs* (April 21, 2009) releases.



The Economics of Food, Farming, Natural Resources, and Rural America

Cattle and Beef: Low milk prices have driven dairy cow slaughter to levels that are offsetting declining beef cow slaughter. Cumulative weekly beef production is about 4 percent below this time last year, as reduced steer and heifer slaughter is offsetting increased dressed weights and increased dairy cow slaughter.

Beef/Cattle Trade: U.S. beef exports are expected to fall 4 percent in 2009 as foreign demand is affected by the global recession and a stronger U.S. dollar makes U.S. beef relatively more expensive. Imports are forecast to increase 9 percent, as the relatively stronger dollar and weak global demand will bring additional supplies to the United States.

Hogs and Pork: U.S. pork production in 2009 is expected to be 2.4 percent lower than a year ago, with

live equivalent prices for 51-52 percent lean hogs averaging \$46-\$48 per hundredweight (cwt). Pork exports were off 13 percent in February, with shipments for 2009 expected to be almost 4.1 billion lbs. February imports of both pork and live swine were off sharply.

Dairy: Milk production is forecast to decline in 2009 on the basis of smaller herd size and a scant yield increase over 2008. Domestic demand may have stabilized at a lower level and some export interest remains in dry products. Prices were raised slightly from last month.

Poultry: The forecast for U.S. broiler meat production in 2009 was reduced by 300 million pounds to 35.5 billion pounds, down about 4 percent from 2008. With a large decline in broiler production expected in first-quarter 2009, the estimates for broiler ending stocks were also



U.S. Livestock Roundup (continued)

reduced. Even with lower production and stocks, wholesale prices for many broiler products have continued to remain below the previous year. Turkey production in January and February was 913 million pounds, down 13 percent from the previous year. This is almost the exact opposite from the first 2 months of

2008, when turkey production rose by 13 percent. Although production is down, turkey stocks remain high and whole bird prices for first-quarter 2009 were down 5 percent from a year earlier.■

Excerpt from *Livestock, Dairy, & Poultry Outlook/LDP-M-178/* April 16, 2009 Economic Research Service, USDA.