



# Hawaii Monthly Livestock Review

National  
Agricultural  
Statistics  
Service

July 12, 2007

In Cooperation with the Hawaii Department of Agriculture

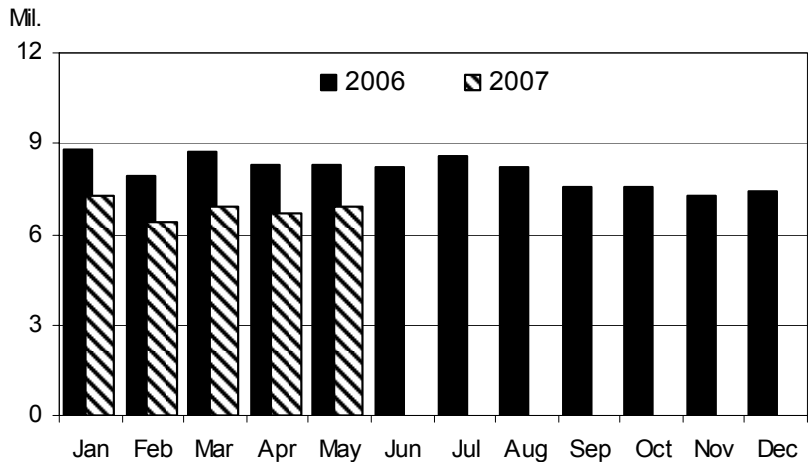
Hawaii Field Office · 1428 South King Street · Honolulu, HI 96814-2512 · 1-(800)-804-9514 · www.nass.usda.gov

## May Egg Production Down 17 Percent From A Year Ago

Hawaii egg production totaled 6.9 million (19,167 cases) in May 2007, down 17 percent from May 2006. The average number of layers on hand during May 2007 was estimated at 367,000, down 3 percent from April 2007 and down 18 percent from May 2006. The average rate of lay during May 2007 was 1,880 per 100 layers (60.6 percent rate of lay), up 1 percent from May 2006. ■

CONTENTS		Page
<b>Poultry</b>		
<i>Number of layers, rate of lay, and total eggs.....</i>		1
<b>Cattle</b>		
<i>Total marketings and exports.....</i>		2
<i>Commercial slaughter.....</i>		3
<b>Hogs</b>		
<i>Commercial slaughter.....</i>		3
<b>Pasture and livestock conditions</b>		
<i>County summaries.....</i>		4
<b>Dairy</b>		
<i>Number of milk cows, milk per cow, and total milk production....</i>		5
<b>Farm prices</b>		
<i>Farm prices for selected livestock commodities.....</i>		6
<b>U.S. livestock roundup</b>		
<i>Latest national estimates and outlook reports.....</i>		7

Monthly Eggs: Total eggs produced, State of Hawaii, 2006 and 2007



EGGS: Number of layers, rate of lay, and production, State of Hawaii, May 2007 and year-to-date totals with comparisons.

County	Number of layers on hand during month			Rate of lay per 100 layers		Total eggs produced			
	May 2006	Apr. 2007	May 2007	May 2006	May 2007	May 2006	May 2007	Year-to-date	
								2006	2007
State <sup>1/</sup>	446.0	380.0	367.0	1,861	1,880	8.30	6.90	42.00	34.20

-----thousands-----      -----eggs-----      -----millions-----

<sup>1/</sup> County data series discontinued.

Mark Hudson, Director  
Steve Gunn, Deputy Director

Ron Nakamura, Nils Morita, Research Statisticians  
Karen Lee and Joyce Jay, Statistical Assistants

# Total Cattle Marketings and Exports

## May Cattle Marketings Up 10 Percent From 2006

Total cattle marketings for May 2007 is estimated at 7,500 head, up 10 percent from May 2006. Cumulative cattle marketings for 2007 through May totaled 24,000 head, down 1 percent from the same period a year ago. ■

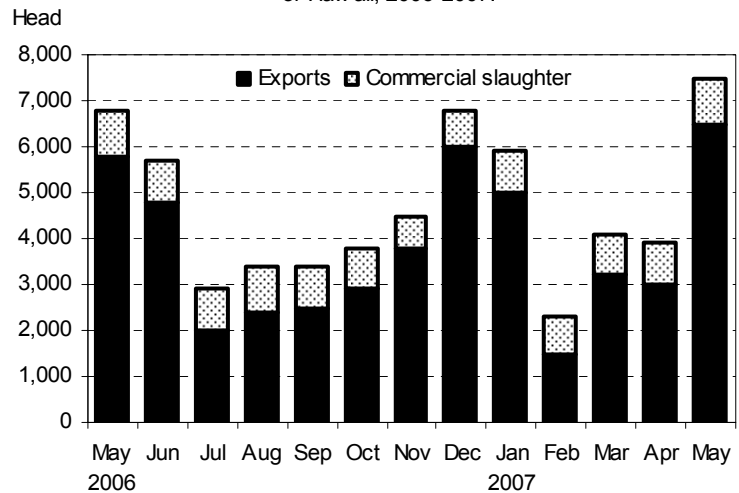
## May exports up 12 percent from year ago

Exports of steers and heifers totaled 6,500 head in May 2007, up 12 percent from a year ago. Exports of steers totaled 3,900 head during May 2007, 3 percent higher than a year ago. Total export of heifers was also higher in May 2007 compared to a year ago at 2,600 head, a 30 percent increase. Cumulative exports for 2007 totaled 19,500 head of steers and heifers through May, down 2 percent from the same period a year ago. Cumulative exports of steers for 2007 stands at 11,500 head, down 1 percent from 2006. Exports of heifers showed a larger decrease through the first five months of 2007 at 8,000 head or down 4 percent from a year ago. Exports of other classes of cattle were not included. ■

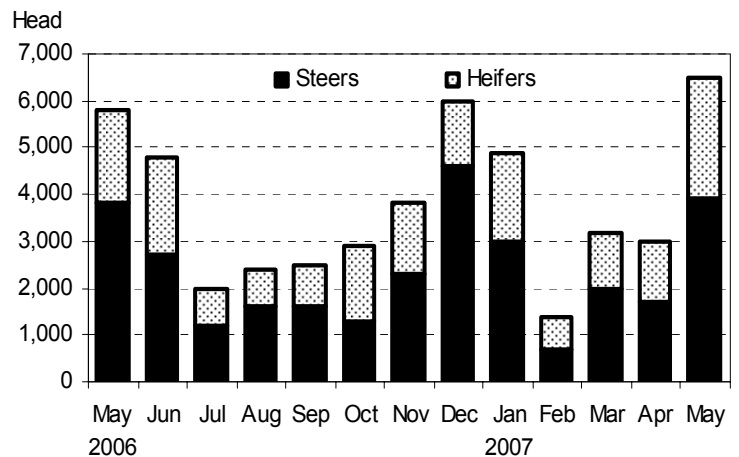
## Average live weight up 2 percent

The average live weight of steers and heifers exported from Hawaii in May 2007 was 418 pounds, up 2 percent from May 2006's average live weight of 412 pounds. ■

Monthly Cattle Marketings: Number of head by type, State of Hawaii, 2006-2007.



Monthly Cattle Exports: Number of head by type, State of Hawaii, 2006-2007.



Cattle: Total marketings, exports by type, and average live weight of exports, State of Hawaii, May 2007 and year-to-date comparison.

Month	Total marketings <sup>1/</sup>		Exports by type <sup>2/</sup>						Average live weight	
			Steers		Heifers		Total <sup>3/</sup>			
	2006	2007	2006	2007	2006	2007	2006	2007	2006	2007
May	6,800	7,500	3,800	3,900	2,000	2,600	5,800	6,500	412	418
Year-to-date <sup>4/</sup>	24,200	24,000	11,600	11,500	8,300	8,000	19,900	19,500	407	429

<sup>1/</sup> Sum of commercial slaughter and exports. Total may not add due to rounding.

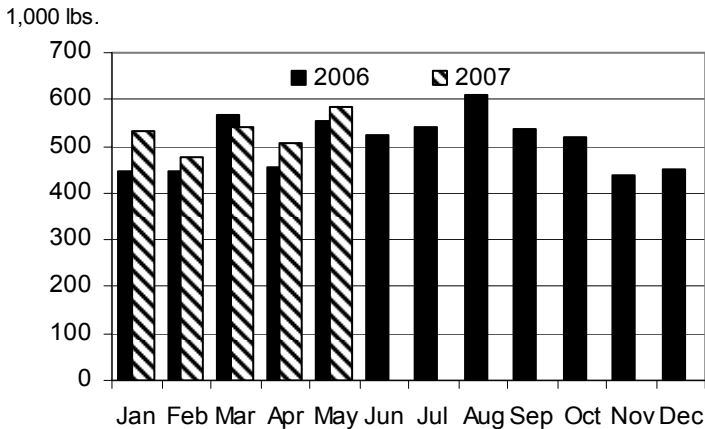
<sup>2/</sup> Cattle and calves shipped out-of-State are classified as steers and heifers; all other classes of animals are not included. Annual totals for all classes of exports are available in the *Statistics of Hawaiian Agriculture* yearbook.

<sup>3/</sup> Steers and heifers may not add to total due to rounding.

<sup>4/</sup> Includes any revisions made to previous months.

# Cattle and Hogs Commercial Slaughter

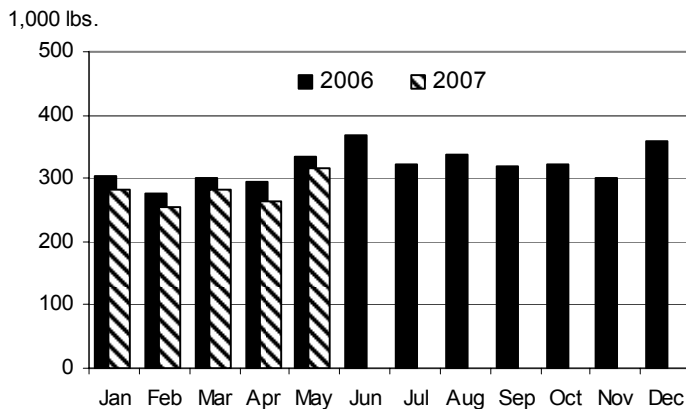
**Monthly Commercial Beef Production:**  
Total Dress Weight, State of Hawaii, 2006 and 2007



## Commercial Beef Production Up 5 Percent

Hawaii commercial beef production (local slaughter) during May 2007 totaled 582,000 pounds, up 5 percent from May 2006. Cumulative beef production (local slaughter) through May 2007 totaled 2.6 million pounds, up 7 percent from a year ago. Commercial kill totaled 1,000 head in May, unchanged from May 2006. Average live weight per head was 1,085 pounds in May 2007, up 6 percent from the average live weight per head in May 2006. ■

**Monthly Commercial Pork Production:**  
Total Dress Weight, State of Hawaii, 2006 and 2007



## Commercial Pork Production Down 5 Percent

Hawaii commercial pork production during May 2007 totaled 316,000 pounds, down 5 percent from May 2006. Cumulative pork production for the first five months of 2007 totaled 1.4 million pounds, down 7 percent from a year ago. Total hog kill was 1,900 head in May 2007, down 5 percent from a year ago. Average live weight per head was 219 pounds in May 2007, down 4 percent from the 227-pound average a year ago. ■

**Cattle and Hogs: Total commercial slaughter, average live weight, total live weight, And total dressed weight, State of Hawaii, May 2007 and year-to-date with comparison. <sup>1/</sup>**

Month	Total commercial slaughter		Average live weight		Total live weight		Total dressed weight <sup>2/</sup>	
	2006	2007	2006	2007	2006	2007	2006	2007
<b>Cattle</b>	----- number of head-----		----- Pounds -----		----- 1,000 pounds -----			
May	1,000	1,000	1,027	1,085	1,012	1,061	556	582
Year-to-date	4,300	4,500	--	--	4,499	4,811	2,470	2,641
<b>Hogs <sup>3/</sup></b>								
May	2,000	1,900	227	219	444	421	333	316
Year-to-date	8,900	8,500	--	--	2,011	1,862	1,508	1,397

-- Not estimated.

<sup>1/</sup> Excludes non-inspected farm slaughter and live cattle and calves shipped out-of-State; includes custom slaughter.

<sup>2/</sup> Estimates based on 54.9 dressing percentage for cattle and 75.0 dressing percentage for hogs.

<sup>3/</sup> Excludes non-inspected farm slaughter; includes custom slaughter and live hog inshipments from the mainland for slaughter.



# Pasture and Livestock Conditions, June 1, 2007

## Hawaii County

May Rainfall <sup>1/</sup>		
Station	2007	Normal
Honokaa	0.26	5.00
Kamuela upper	0.89	3.90
Kahuku Ranch	0.14	5.10
Puu Waawaa	0.87	2.80
Waikii	0.35	2.10

**North Hilo, South Hilo, and Puna districts** pastures remained in fair to good condition. Windward Puna and Hilo areas were in better condition than other areas, but soil moisture continued to dwindle and growth rates have slowed. Cattle and calves were in fair to good condition. Ranchers were busy keeping water supplies stocked and moving cattle to better utilize water resources.

**Ka`u district** pastures were in poor to fair condition. Low rainfall and warm temperatures resulted in poor growing conditions. Growth in the upper elevations was very slow, but pastures were somewhat green and feed was available.

**North and South Kohala districts** pastures were in fair to poor condition. Windward pastures in Waimea were starting to turn brown due to a lack of rainfall. Upper North Kohala pastures received light showers which kept pastures green and provided moisture for new grass. Coastal pastures in Kapaau and Hawi were brown and only dry feed was available. Grass supplies were low in the upper Waikii and Kilohana pastures due to a lack of adequate moisture. Overall cattle conditions were fair. Some ranchers are concerned the dry conditions will affect birthing cycles.

**North and South Kona districts** pastures were in fair to poor condition. Continued dry weather have depleted grass supplies in the coastal areas. Isolated, convective showers in the upper sections of south and central Kona provided some moisture, but additional

rainfall was needed to increase grass supplies. Cattle were in fair condition and supplemental feed was being provided in the drier areas.

**Hamakua district** pastures were in poor to fair condition. New grass growth was exceedingly slow and feed supplies were dwindling. Stock water was also low. Coastal pastures exposed to winds were considerably drier than those in the upper elevations.

## Maui County

May Rainfall <sup>1/</sup>		
Station	2007	Normal
Hana Airport	2.23	5.90
Pukalani	0.00	1.00
Ulupalakua ranch	0.94	1.40
Molokai Airport	0.09	1.00

Maui pastures on the eastside of the island continued to provide some green forage. Ulupalakua received showers, but more are needed to sustain fair pasture conditions. Pastures from Keokea to Kula were still able to provide green forage. Conditions, however, were declining quickly. Dry forage was also available. Makawao pastures were in fair condition. Pastures in Haiku remained in fair condition due to occasional showers. Pastures in the central part of the island were able to provide only dry forage. Lower elevation pastures in the south were dry, although some forage was available. On the west side, dry forage was present and grazing pressure appeared to be low.

On Molokai, pastures were in generally fair condition. Pastures in Kalae provided mostly green forage. Eastside pastures received some showers and were in fair condition. Western pastures continued to dry-out, but an abundant amount of dry forage was available.

Overall, cattle appeared to be in good condition. Some operations were using mineral supplements.

## Honolulu County

May Rainfall <sup>1/</sup>		
Station	2007	Normal
Hakipuu mauka	1.87	4.90
Lualualei	1.69	1.20
Waimanalo	0.42	3.20

Rainfall remained below normal levels for most areas of the island. Pastures remained in mostly fair condition.

## Kauai County

May Rainfall <sup>1/</sup>		
Station	2007	Normal
Kalaheo	0.91	4.00
Kapahi	2.17	5.90
Princeville airport	1.08	6.10

West and south pastures remained dry. Continued drought-like conditions have slowed grass growth and depleted old feed in pastures. Eastside pastures were drying with poor grass growth. Some supplemental feeding was reported. Reports of Yellow Sugarcane aphid damage were at moderate to heavy levels. Old pasture feed in the windward sector was limited and quickly decreasing.

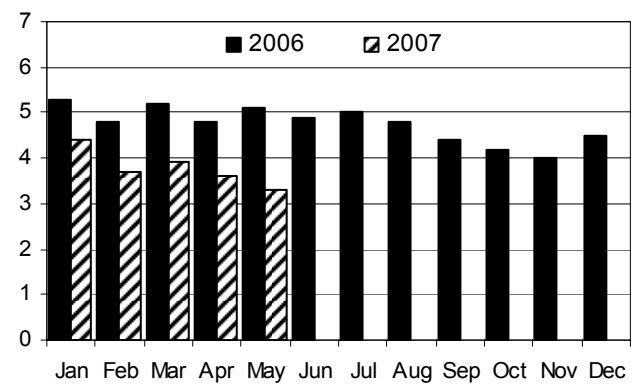
<sup>1/</sup> Rainfall stations were selected from the National Weather Service's Hydronet system of automated rain gages. Featured stations may vary each month. All rainfall data has not been quality controlled, and therefore is not certified by the National Weather Service. A complete listing of Hydronet stations, rainfall gage location maps, and other rainfall data may be found at the National Weather Service's hydrology homepage:

<http://www.prh.noaa.gov/hnl/pages/hydrology.php>

## May Milk Production Down 35 Percent From Year Ago

Hawaii's dairy cows produced 3.3 million pounds of milk in May 2007, down 35 percent from a year ago. Cumulative milk production for the first five months of 2007 totaled 18.9 million pounds, down 25 percent from the same period in 2006. ■

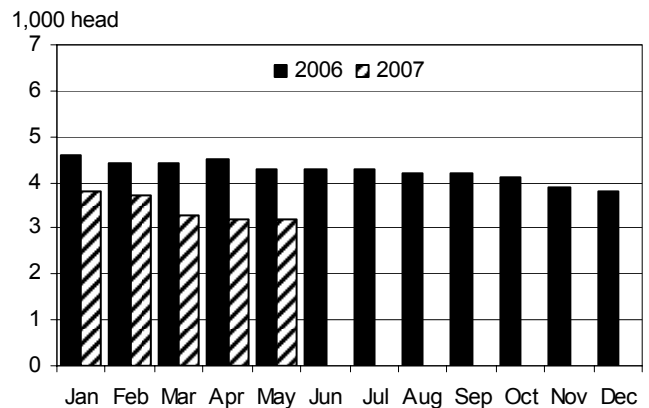
**Milk: Monthly production, State of Hawaii, 2006 and 2007.**  
Mil. pounds



## May's Cow Herd Down 26 Percent From Year Ago

Hawaii's cow herd, both dry and milking, numbered 3,200 head in May 2007, unchanged from April 2007 but down 26 percent from May 2006. Average milk per cow is estimated at 1,020 pounds for May 2007, down 14 percent from last May's average of 1,185 pounds per cow. ■

**Milk: Average number of cows on hand during month, State of Hawaii, 2006 and 2007.**  
1,000 head



**Milk: All milk cows, milk per cow, and total milk production, State of Hawaii, May 2007 and year-to-date with comparisons. <sup>1/</sup>**

Area	All milk cows <sup>2/</sup>			Milk per cow		Milk production			
	May 2006	Apr. 2007	May 2007	May 2006	May 2007	May 2006	May 2007	Year-to-date	
								2006	2007
State	4,300	3,200	3,200	1,185	1,020	5,100	3,300	25,200	18,900

----- number of head -----      ----- pounds -----      ----- 1,000 pounds -----

<sup>1/</sup> Figures for 2007 are preliminary.

<sup>2/</sup> Includes dry cows and cows on non-commercial dairy farms.

# Average Farm Prices

## Most Livestock Prices Remain Higher Than Year-ago Averages

### Steers and heifers

The average dress weight farm price for steers and heifers is estimated at 99.0 cents per pound for May 2007, down 1 percent from April 2007 but unchanged compared to a year ago.

### Cows

The average dress weight farm price for cows is estimated at 55.0 cents per pound in May 2007, up 2 percent from April. Compared to a year ago, the average dress weight farm price for cows was up a penny from May 2006.

### Market hogs

The average dress weight farm price for market hogs is estimated at \$1.17 per pound for May 2007, down 2 percent from April 2007. Compared to a year ago, the dressed weight for market hogs was down 8 percent this May.

### Milk

The average farm price for milk was \$27.40 per hundredweight during May 2007, up 1 percent from April 2007. Compared to a year ago, the May 2007 average farm price for milk was 10 percent higher.

### Eggs

The average farm price for a dozen eggs was \$1.12 in May 2007, up 2 percent from April 2007 and 14 percent higher than a year ago. ■

**Livestock Commodity Farm Prices:** Average farm prices for steers and heifers, cows, market hogs, milk, and eggs, State of Hawaii, May 2007 with comparisons.

Commodity	May 2006	April 2007	May 2007
----- cents per pound -----			
Steers and heifers <sup>1/</sup>			
Dressed weight .....	99.0	99.5	99.0
Live weight <sup>2/</sup> .....	54.4	54.6	54.4
Cows <sup>1/</sup>			
Dressed weight .....	54.0	54.0	55.0
Live weight <sup>2/</sup> .....	29.6	29.6	30.2
Market hogs <sup>1/</sup>			
Dressed weight .....	127.0	119.0	117.0
Live weight <sup>3/</sup> .....	95.3	89.3	87.8
----- dollars per 100 pounds -----			
Milk.....	24.90	27.10	27.40
----- cents per dozen -----			
Eggs <sup>4/</sup> .....	98.0	110.0	112.0

<sup>1/</sup> Equivalent delivered slaughterhouse for sales in county of production and delivered shipper's dock for off-island sales.

<sup>2/</sup> The average live weight price for range steers, heifers, and cows is equal to the dressed weight price multiplied by a factor of 0.549.

<sup>3/</sup> The average live weight price for market hogs (includes roasters) is equal to the dressed weight price multiplied by a factor of 0.75.

<sup>4/</sup> Prices are for all eggs, equivalent delivered processing plant. Preliminary prices are based on processor reports from the counties of Hawaii, Kauai, and Maui. Final prices are based on processor reports from all counties.





**Commercial red meat production** for the United States totaled 4.08 billion pounds in May, up slightly from the 4.06 billion pounds produced in May 2006.

**Beef production**, at 2.28 billion pounds, was 1 percent below the previous year. Cattle slaughter totaled 3.05 million head, up slightly from May 2006. The average live weight was down 12 pounds from the previous year, at 1,232 pounds.

**Veal production** totaled 12.4 million pounds, 3 percent below May a year ago. Calf slaughter totaled 59,000 head, up 4 percent from May 2006. The average live weight was down 23 pounds from last year, at 349 pounds.

**Pork production** totaled 1.76 billion pounds, up 2 percent from the previous year. Hog kill totaled 8.76 million head, up 3 percent from May 2006. The average live weight was down 1 pound from the previous year, at 269 pounds.

**Lamb and mutton production**, at 15.5 million pounds, was down 4 percent from May 2006. Sheep slaughter totaled 218,200 head, 3 percent below last year. The

average live weight was 142 pounds, unchanged from May a year ago.

**U.S. egg production** totaled 7.58 billion during May 2007, down 1 percent from last year. Production included 6.45 billion table eggs, and 1.14 billion hatching eggs, of which 1.07 billion were broiler-type and 68 million were egg-type. The total number of layers during May 2007 averaged 341 million, down 1 percent from last year. May egg production per 100 layers was 2,226 eggs, up 1 percent from May 2006.

All layers in the U.S. on June 1, 2007 totaled 339 million, down 1 percent from last year. The 339 million layers consisted of 280 million layers producing table or market type eggs, 56.5 million layers producing broiler-type hatching eggs, and 2.82 million layers producing egg-type hatching eggs. Rate of lay per day on June 1, 2007, averaged 72.4 eggs per 100 layers, up 2 percent from June 1, 2006. ■

Excerpts from *Livestock Slaughter* (June 22, 2007) and *Chickens and Eggs* (June 22, 2007) releases.



*The Economics of Food, Farming, Natural Resources, and Rural America*

**Cattle/Beef:** Prices across the beef/cattle spectrum are declining, consistent with seasonal price patterns and dropping despite relatively tight supplies of market-ready cattle. Commercial cow slaughter continues at relatively high levels, in part due to extremely dry conditions in the Southeastern, Southwestern, and Intermountain areas of the United States. Forage, range, and crop conditions of the Central part of the country are favorable.

**Dairy:** Global supplies of milk and dairy products remain tight, keeping international prices high. Domestic demand remains very strong, especially for butter-powder. Market prices will ration demand this year and next, as higher feed prices will likely limit the rate of production expansion.

**Poultry:** From the beginning of the second quarter, higher numbers of broiler chicks have been placed for

growout compared with the same period in 2006. This reverses the trend seen over the previous two quarters. Overall meat production in second-quarter 2007 is now expected to total 8.98 billion pounds, down less than 2 percent from the same period in 2006, and meat production in the third and fourth quarters of 2007 is expected to be higher than in the same periods in 2006.

Even with growth in turkey production in the first quarter of 2007 and expected growth in the second quarter, prices for whole turkeys and many turkey parts are well above year-earlier levels. Turkey prices have benefited from the strength of broiler product prices, along with generally higher prices for beef and pork. ■

Excerpt from *Livestock, Dairy, & Poultry Outlook/LDP-M-156/June 19, 2007 Economic Research Service, USDA.*



