



HAWAII DEPARTMENT OF AGRICULTURE  
1428 South King Street  
HONOLULU, HI 96814-2512

FACT FINDERS FOR AGRICULTURE

U.S. DEPARTMENT OF AGRICULTURE  
Phone: (808) 973-9588  
FAX: (808) 973-2909

FREQUENCY: Monthly

RELEASED: January 18, 2006

**IN THIS ISSUE**



Poultry .....	1
Cattle Marketings .....	2
Commercial Slaughter .....	3
Milk Production .....	4
Prices .....	5

## SEPTEMBER EGG PRODUCTION 7 PERCENT BELOW A YEAR AGO

Egg production during September totaled **8.8** million eggs (24,444 cases), 7 percent less than a year earlier, according to the office of the *Hawaii Field Office of USDA's National Agricultural Statistics Service*. The average number of layers on hand during September 2005 was 496,000, compared with 501,000 a year ago and



491,000 during August 2005. The average rate of lay was 1,774 eggs per 100 layers (59.1 percent lay rate) compared with 1,896 (63.2 percent) a year ago. Cumulative production of eggs for the first nine months of 2005 was 86.2 million eggs, 3 percent below the same period in 2004.

### U.S. EGG PRODUCTION

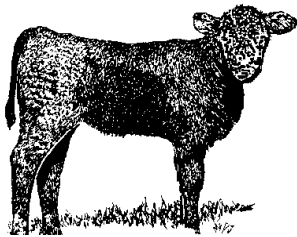
U.S. egg production totaled 7.38 billion during September 2005, up slightly from last year. Production included 6.31 billion table eggs, and 1.07 billion hatching eggs, of which 1.01 billion were broiler-type and 59 million were egg-type. The total number of layers during September 2005 averaged 342 million, down 1 percent from a year earlier. September egg production per 100 layers was 2,155 eggs, up 1 percent from September 2004.

All layers in the U.S. on October 1, 2005, totaled 343 million, down slightly from a year ago. The 343 million layers consisted of 286 million layers producing table or market type eggs, 55.1 million layers producing broiler-type hatching eggs, and 2.46 million layers producing egg-type hatching eggs. Rate of lay per day on October 1, 2005, averaged 71.9 eggs per 100 layers, up 1 percent from October 1, 2004.

**Number of layers and egg production, State of Hawaii, September 2005 <sup>1</sup>**

County	Number of layers on hand during month			Eggs per 100 layer		Total eggs produced			
	Sept. 2004	Aug. 2005	Sept. 2005	Sept. 2004	Sept. 2005	Sept. 2004	Sept. 2005	Year-to-date	
	----- Thousands -----			--- Number ---		----- Millions -----			
Hawaii/Kauai/Maui	125.2	100.6	99.9	1,779	1,854	2.20	1.86	21.10	18.50
Honolulu	375.8	390.4	396.1	1,950	1,752	7.30	6.94	68.10	67.70
State	501.0	491.0	496.0	1,896	1,774	9.50	8.80	89.20	86.20

<sup>1</sup> State totals may not add due to rounding.



## SEPTEMBER MARKETINGS 16 PERCENT BELOW YEAR AGO

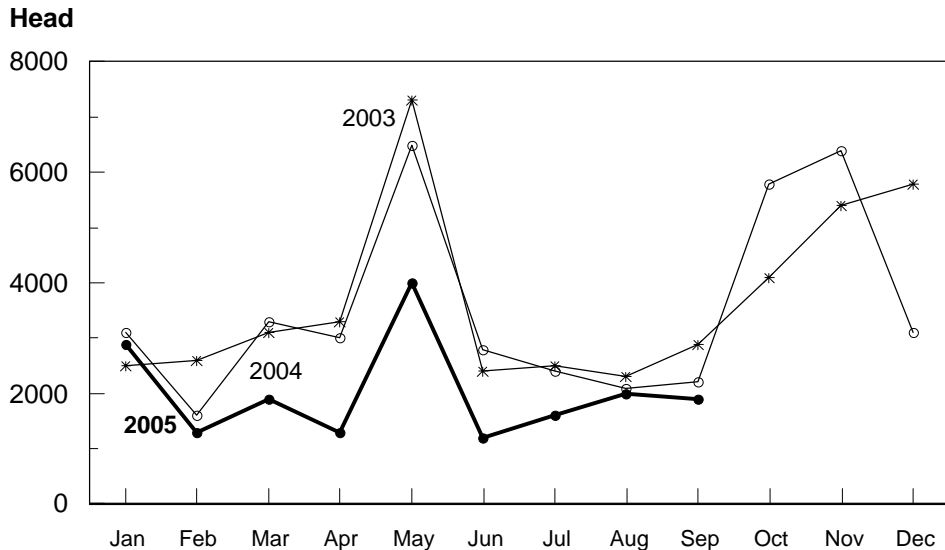
Cattle marketings during September totaled 2,600 head, compared with 3,100 head a year ago and 2,800 head during August 2005. Declines in both out-of-state shipments and local slaughter accounted for the 16 percent drop in marketings. Exports during September 2005 decreased 14 percent from a year ago to 1,900 head. Cumulative marketings for the first nine months of 2005 was 27,100 head, a decrease of 23 percent from the same period a year earlier. Year-to-date exports for 2005 was 20,300 head, a decline of 25 percent from the same 9-month period in 2004.

**Cattle Marketings, State of Hawaii, September 2005**

Month	Total Marketings <sup>1</sup>		Exports <sup>2</sup>						Average Live Weight	
	Number of Head <sup>3</sup>		Number of Head							
	2004	2005	Steers	Heifers	Total <sup>3</sup>		2004	2005	2004	2005
September	3,100	2,600	1,300	1,000	900	800	2,200	1,900	453	467
Year-to-date <sup>4</sup>	35,000	27,100	16,100	11,100	10,900	9,200	27,000	20,300	449	445

<sup>1</sup> Sum of Commercial Slaughter and Exports.  
<sup>2</sup> Cattle and calves shipped out-of-State.  
<sup>3</sup> Total may not add to sum due to rounding.  
<sup>4</sup> Includes any revisions made to previous month figures.

## CATTLE & CALF OUTSHIPMENTS STATE OF HAWAII, 2003-2005



USDA, NASS

**MARK E. HUDSON**

Director

**REGINA W. HIDANO**

Agricultural Statistician

**NILS K. MORITA**

Research Statistician

**STEVE GUNN**

Deputy Director

**JOYCE JAY**

Statistical Assistant

**KAREN A. LEE**

Statistical Assistant

Contributing by County

Robert Miyake      Hawaii

David Mattice      Hawaii

Naomi Landgraf      Maui

June Okamura      Kauai, Honolulu

## COMMERCIAL BEEF PRODUCTION 14 PERCENT BELOW A YEAR AGO

Commercial beef production (local slaughter) during September 2005 totaled 430,000 pounds, compared with 501,000 pounds a year earlier. Commercial kill for September 2005 totaled 700 head, 200 fewer than a year ago. Average live weight per head, at 1,123 pounds, was 5 percent heavier than a year ago. Cumulative beef production for the first 9 months of 2005 was 14 percent below the same period a year earlier.

## U.S. BEEF PRODUCTION

Beef production, at 2.16 billion pounds, was 3 percent above the previous year. Cattle slaughter totaled 2.78 million head, up 1 percent from September 2004. The average live weight was up 11 pounds from the previous year, at 1,276 pounds.

## PORK PRODUCTION 6 PERCENT LESS THAN A YEAR AGO

Commercial pork production during September 2005 totaled 310,000 pounds, compared with 331,000 pounds a year ago. Total hog kill of 1,900 head was 300 less than a year ago. Average live weight per head, at 219 pounds, was 8 percent heavier than a year ago. Year-to-date pork production for the first nine months of 2005 was 12 percent less than the same period in 2004.

## U.S. PORK PRODUCTION

Pork production totaled 1.74 billion pounds, down 2 percent from the previous year. Hog kill totaled 8.87 million head, 1 percent below September 2004. The average live weight was unchanged the previous year, at 265 pounds.

### Commercial slaughter, State of Hawaii, September 2005 <sup>1</sup>

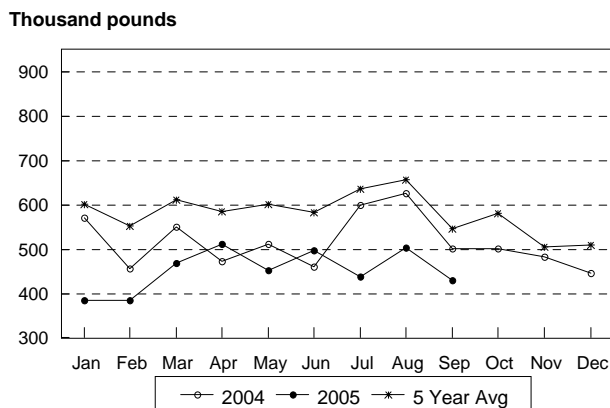
Species	Number of head		Average live weight		Total live weight <sup>2</sup>		Total dressed weight	
	2004	2005	2004	2005	2004	2005	2004	2005
----- pounds ----- 1,000 pounds -----								
<b>Cattle</b>								
September	900	700	1,074	1,123	913	783	501	430
Year-to-date	8,000	6,800			8,645	7,418	4,746	4,072
<b>Hogs <sup>3</sup></b>								
September	2,200	1,900	203	219	441	413	331	310
Year-to-date	20,800	17,400			4,197	3,694	3,148	2,771

<sup>1</sup> Excludes non-inspected farm slaughter and live cattle and calves shipped out-of-state; includes custom slaughter.

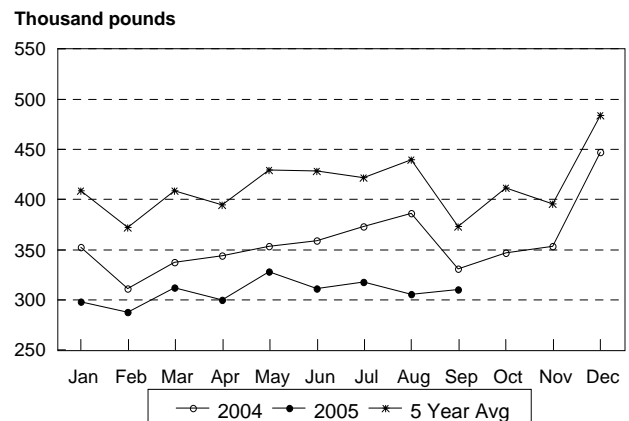
<sup>2</sup> Estimates based on 54.9 dressing percentage for cattle; 75.0 dressing percentage for hogs.

<sup>3</sup> Excludes non-inspected farm slaughter; includes custom slaughter and live hog inshipments from the mainland for slaughter.

Commercial Beef Production, State of Hawaii  
2005, with comparisons



Commercial Pork Production, State of Hawaii  
2005, with comparisons



# SEPTEMBER OUTPUT, THIRD QUARTER DOWN

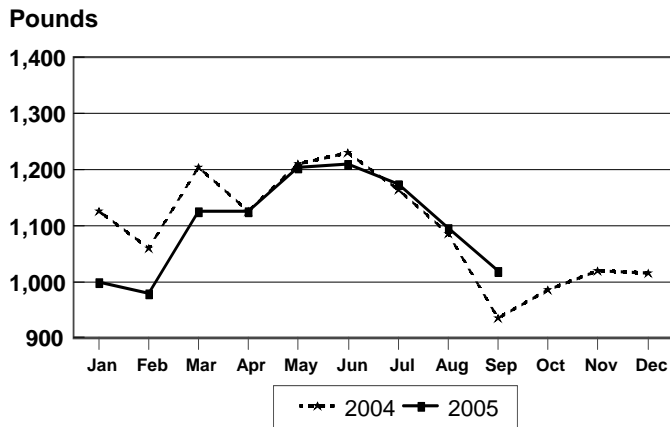


In September, Hawaii's dairy cows produced 5.4 million pounds of milk compared with 5.6 million pounds during September last year and 5.9 million pounds during August this year. The dairy herd consisting of dry and milking cows numbered 5,300 head, falling 700 head from September 2004 and down 100 head from August 2005. The average output for cows was 1,020 pounds for September, increasing 85 pounds from September 2004 but decreasing 75 pounds from August 2005. Production for the first three quarters of 2005 totaled 54.1 million pounds, falling 14 percent from the comparable period in 2004.

## U.S. MILK PRODUCTION

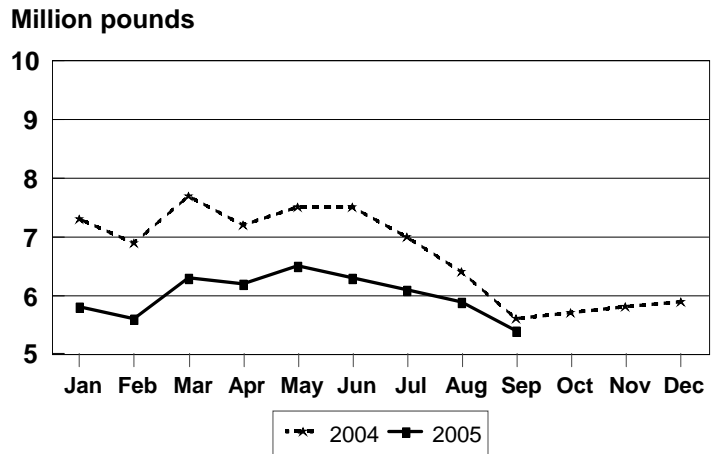
Milk production in the 23 major States during September totaled 13.0 billion pounds, up 4.9 percent from September 2004. August revised production, at 13.6 billion pounds, was up 4.8 percent from August 2004. The August revision represented an increase of 22 million pounds from last month's preliminary production estimate. Production per cow in the 23 major States averaged 1,597 pounds for September, 64 pounds above September 2004. The number of milk cows on farms in the 23 major States was 8.16 million head, 54,000 head more than September 2004, and 1,000 head more than August 2005.

### Milk Production Per Cow, State of Hawaii, 2004-2005



USDA, NASS

### Total Milk Production, State of Hawaii, 2004-2005



USDA, NASS

### Milk cows and milk production, State of Hawaii, September 2005

County	All milk cows <sup>12</sup>			Milk per cow <sup>2</sup>		Milk production <sup>2</sup>			
	Sept. 2004	Aug. 2005	Sept. 2005	Sept. 2004	Sept. 2005	Sept. 2004	Sept. 2005	Year-to-date	
	----- Number -----			--- Pounds ---		----- 1,000 pounds -----			
State	6,000	5,400	5,300	935	1,020	5,600	5,400	63,100	54,100

<sup>1</sup> Includes dry cows and cows on non-commercial dairy farms.

<sup>2</sup> Figures for 2005 are preliminary.

Average farm prices, State of Hawaii, September 2005

Commodity	September 2004	August 2005	September 2005
	----- cents per pound -----		
<b>Range steers and heifers</b> <sup>1</sup>	88.0	91.0	92.0
- <i>dressed weight</i>			
- <i>(live weight equivalent)</i>	(48.3)	(50.0)	(50.5)
<b>Cows</b> <sup>1</sup>	50.0	52.0	52.0
- <i>dressed weight</i>			
- <i>(live weight equivalent)</i>	(27.5)	(28.5)	(28.5)
<b>Market hogs</b> <sup>1 2</sup>	121.0	118.0	118.0
- <i>dressed weight</i>			
- <i>(live weight equivalent)</i>	(90.8)	(88.5)	(88.5)
	----- dollars per 100 pounds -----		
<b>Milk</b> <sup>3</sup>	25.00	26.90	26.80
	----- cents per dozen -----		
<b>Eggs</b> <sup>4</sup>	105.5	88.0	85.0

<sup>1</sup>Equivalent delivered slaughterhouse for sales on island of production and delivered shippers dock for off-island sales. Factors of 0.549 and 0.75 used to convert dressed weight prices to live weight equivalent for cattle and hogs, respectively.

<sup>2</sup> Includes roasters.

<sup>3</sup> Beginning 1999, monthly average price rounded to the nearest dime.

<sup>4</sup> Prices are for all eggs, equivalent delivered processing plant. Preliminary prices are based on processor reports from Hawaii, Kauai, Maui and adjusted Market Analysis & News Branch wholesale prices for Oahu. Final prices are based on processor reports from all islands.