



HAWAII DEPARTMENT OF AGRICULTURE  
1428 South King Street  
HONOLULU, HI 96814-2512

FACT FINDERS FOR AGRICULTURE

U.S. DEPARTMENT OF AGRICULTURE  
Phone: (808) 973-9588  
FAX: (808) 973-2909

FREQUENCY: Monthly

RELEASED: January 18, 2006

**IN THIS ISSUE**



Poultry .....	1
Cattle Marketings .....	2
Commercial Slaughter .....	3
Milk Production .....	4
Prices .....	5

## OCTOBER EGG PRODUCTION 7 PERCENT LOWER THAN A YEAR AGO

Egg production during October totaled **9.2 million eggs** (25,556 cases), 7 percent less than a year earlier, according to the office of the *Hawaii Field Office of USDA's National Agricultural Statistics Service*. The average number of layers on hand during October 2005 was 496,000, compared with 505,000 a year ago and 496,000 during September 2005. The average rate of lay was 1,855 eggs per 100 layers (59.8 percent lay rate) compared with 1,960 (63.2 percent) a year ago. Cumulative production of eggs for the first ten months of 2005 was 95.4 million eggs, 4 percent below the same period in 2004.



### U.S. EGG PRODUCTION

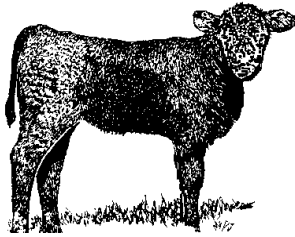
U.S. egg production totaled 7.70 billion during October 2005, up one percent from last year. Production included 6.60 billion table eggs, and 1.10 billion hatching eggs, of which 1.04 billion were broiler-type and 60 million were egg-type. The total number of layers during October 2005 averaged 344 million, down slightly from a year earlier. October egg production per 100 layers was 2,239 eggs, up 1 percent from October 2004.

All layers in the U.S. on November 1, 2005, totaled 345 million, down slightly from a year ago. The 345 million layers consisted of 287 million layers producing table or market type eggs, 55.3 million layers producing broiler-type hatching eggs, and 2.46 million layers producing egg-type hatching eggs. Rate of lay per day on November 1, 2005, averaged 72.4 eggs per 100 layers, up 1 percent from November 1, 2004.

**Number of layers and egg production, State of Hawaii, October 2005 <sup>1</sup>**

County	Number of layers on hand during month			Eggs per 100 layer		Total eggs produced			
	Oct. 2004	Sept. 2005	Oct. 2005	Oct. 2004	Oct. 2005	Oct. 2004	Oct. 2005	Year-to-date	
								2004	2005
	----- Thousands -----			--- Number ---		----- Millions -----			
Hawaii/Kauai/Maui	124.9	99.9	100.5	1,759	2,045	2.16	2.07	23.30	20.60
Honolulu	380.1	396.1	395.5	2,015	1,801	7.74	7.13	75.80	74.80
State	505.0	496.0	496.0	1,960	1,855	9.90	9.20	99.10	95.40

<sup>1</sup> State totals may not add due to rounding.



## OCTOBER MARKETINGS DOWN 58 PERCENT FROM A YEAR AGO

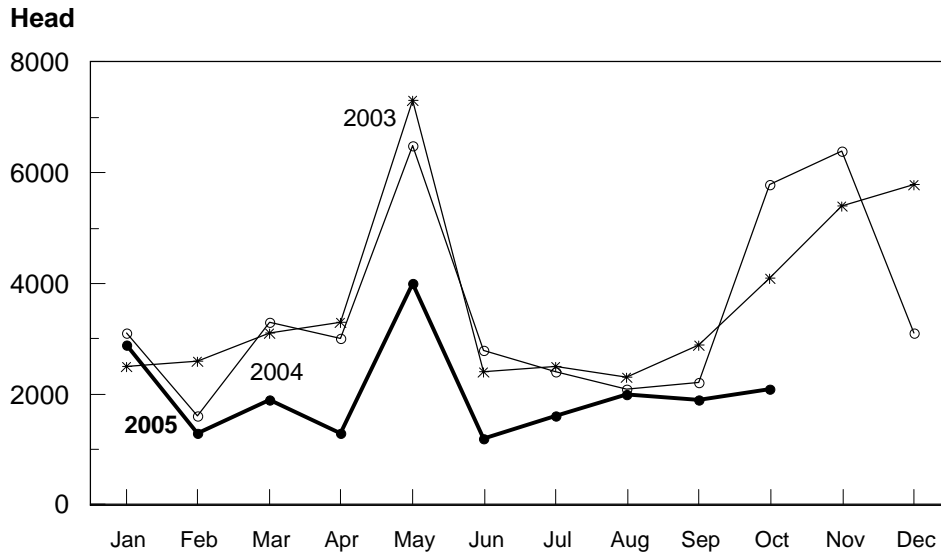
Cattle marketings during October totaled 2,800 head, compared with 6,700 head a year ago and 2,600 head during September 2005. Declines in both out-of-state shipments and local slaughter accounted for the 58 percent drop in marketings. Exports during October 2005 decreased 64 percent from a year ago to 2,100 head. Cumulative marketings for the first ten months of 2005 was 29,900 head, a decrease of 28 percent from the same period a year earlier. Year-to-date exports for 2005 was 22,400 head, a decline of 32 percent from the same 10-month period in 2004.

**Cattle Marketings, State of Hawaii, October 2005**

Month	Total Marketings <sup>1</sup>		Exports <sup>2</sup>						Average Live Weight	
	Number of Head <sup>3</sup>		Number of Head							
			Steers		Heifers		Total <sup>3</sup>			
	2004	2005	2004	2005	2004	2005	2004	2005	2004	2005
October	6,700	2,800	3,500	700	2,300	1,400	5,800	2,100	426	424
Year-to-date <sup>4</sup>	41,700	29,900	19,600	11,800	13,200	10,600	32,800	22,400	445	443

<sup>1</sup> Sum of Commercial Slaughter and Exports.  
<sup>2</sup> Cattle and calves shipped out-of-State.  
<sup>3</sup> Total may not add to sum due to rounding.  
<sup>4</sup> Includes any revisions made to previous month figures.

## CATTLE & CALF OUTSHIPMENTS STATE OF HAWAII, 2003-2005



USDA, NASS

**MARK E. HUDSON**

Director

**REGINA W. HIDANO**

Agricultural Statistician

**NILS K. MORITA**

Research Statistician

**STEVE GUNN**

Deputy Director

**JOYCE JAY**

Statistical Assistant

**KAREN A. LEE**

Statistical Assistant

Contributing by County

Robert Miyake      Hawaii

David Mattice      Hawaii

Naomi Landgraf      Maui

June Okamura      Kauai, Honolulu

## COMMERCIAL BEEF PRODUCTION 12 PERCENT BELOW A YEAR AGO

Commercial beef production (local slaughter) during October 2005 totaled 444,000 pounds, compared with 502,000 pounds a year earlier. Commercial kill for October 2005 totaled 700 head, 200 fewer than a year ago. Average live weight per head, at 1,124 pounds, was 9 percent heavier than a year ago. Cumulative beef production for the first ten months of 2005 was 14 percent below the same period a year earlier.

## U.S. BEEF PRODUCTION

Beef production, at 2.08 billion pounds, was 2 percent below the previous year. Cattle slaughter totaled 2.68 million head, down 2 percent from October 2004. The average live weight was up 13 pounds from the previous year, at 1,280 pounds.

## PORK PRODUCTION DOWN 18 PERCENT FROM A YEAR AGO

Commercial pork production during October 2005 totaled 285,000 pounds, compared with 347,000 pounds a year ago. Total hog kill of 1,700 head was 500 fewer than a year ago. Average live weight per head, at 220 pounds, was 6 percent heavier than a year ago. Year-to-date pork production for the first 10 months of 2005 was 13 percent less than the same period in 2004.

## U.S. PORK PRODUCTION

Pork production totaled 1.82 billion pounds, up 2 percent from the previous year. Hog kill totaled 9.12 million head, 2 percent above October 2004. The average live weight was 2 pounds above the previous year, at 269 pounds.

### Commercial slaughter, State of Hawaii, October 2005 <sup>1</sup>

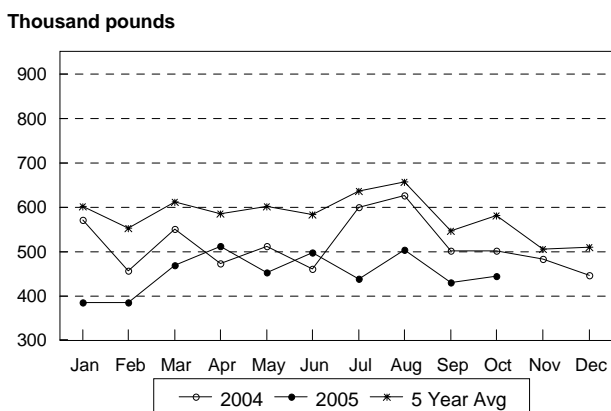
Species	Number of head		Average live weight		Total live weight <sup>2</sup>		Total dressed weight	
	2004	2005	2004	2005	2004	2005	2004	2005
----- pounds ----- 1,000 pounds -----								
<b>Cattle</b>								
October	900	700	1,034	1,124	914	808	502	444
Year-to-date	8,900	7,600			9,559	8,226	5,248	4,516
<b>Hogs <sup>3</sup></b>								
October	2,200	1,700	208	220	463	380	347	285
Year-to-date	23,100	19,100			4,660	4,074	3,495	3,056

<sup>1</sup> Excludes non-inspected farm slaughter and live cattle and calves shipped out-of-state; includes custom slaughter.

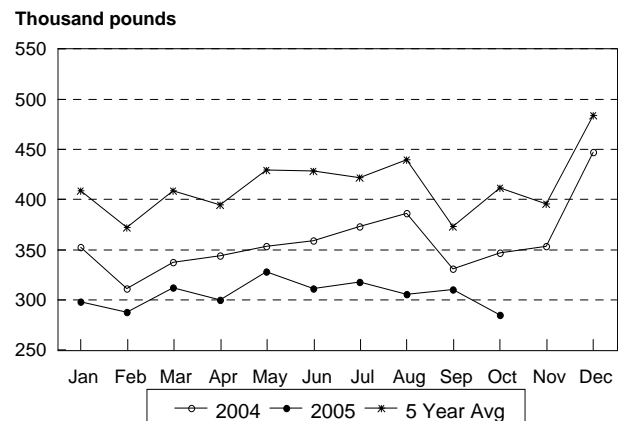
<sup>2</sup> Estimates based on 54.9 dressing percentage for cattle; 75.0 dressing percentage for hogs.

<sup>3</sup> Excludes non-inspected farm slaughter; includes custom slaughter and live hog inshipments from the mainland for slaughter.

Commercial Beef Production, State of Hawaii  
2005, with comparisons



Commercial Pork Production, State of Hawaii  
2005, with comparisons



# OCTOBER MILK LOWER

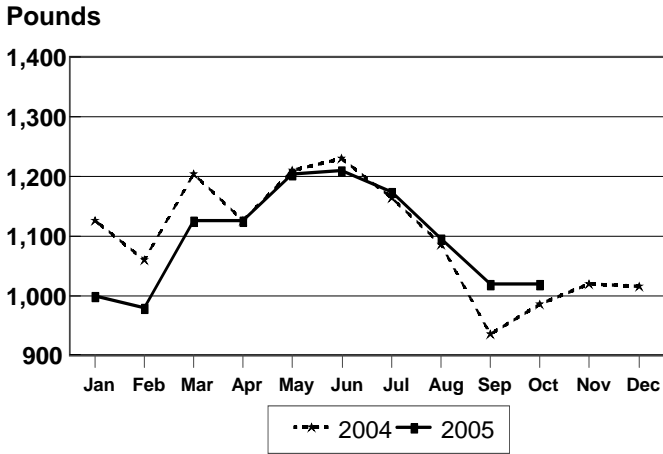


Hawaii's dairy cows produced 5.3 million pounds of milk in October compared with 5.7 million pounds produced in October last year and 5.4 million pounds during September 2005. The dairy herd consisting of dry and milking cows numbered 5,200 head, down 600 head from October last year and 100 head lower than September this year. The average output for cows was 1,020 pounds for October, up 35 pounds from October 2004 but unchanged from September 2005. Production for the first ten months of this year totaled 59.4 million pounds, dropping 14 percent from the same period last year.

## U.S. MILK PRODUCTION

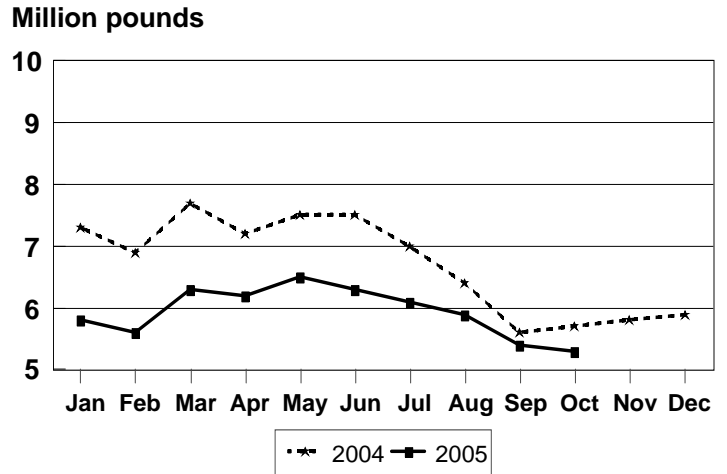
Milk production in the 23 major States during October totaled 13.4 billion pounds, up 4.1 percent from October 2004. September revised production, at 13.0 billion pounds, was up 4.7 percent from September 2004. The September revision represented a decrease of 27 million pounds or 0.2 percent from last month's preliminary production estimate. Production per cow in the 23 major States averaged 1,636 pounds for October, 53 pounds above October 2004. The number of milk cows on farms in the 23 major States was 8.16 million head, 58,000 head more than October 2004, and 4,000 head more than September 2005.

### Milk Production Per Cow, State of Hawaii, 2004-2005



USDA, NASS

### Total Milk Production, State of Hawaii, 2004-2005



USDA, NASS

### Milk cows and milk production, State of Hawaii, October 2005

County	All milk cows <sup>12</sup>			Milk per cow <sup>2</sup>		Milk production <sup>2</sup>			
	Oct. 2004	Sept. 2005	Oct. 2005	Oct. 2004	Oct. 2005	Oct. 2004	Oct. 2005	Year-to-date	
	----- Number -----			----- Pounds -----		----- 1,000 pounds -----			
State	5,800	5,300	5,200	985	1,020	5,700	5,300	68,800	59,400

<sup>1</sup> Includes dry cows and cows on non-commercial dairy farms.

<sup>2</sup> Figures for 2005 are preliminary.

Average farm prices, State of Hawaii, October 2005

Commodity	October 2004	September 2005	October 2005
	----- cents per pound -----		
<b>Range steers and heifers</b> <sup>1</sup>			
<i>- dressed weight</i>	88.5	92.0	92.0
<i>- (live weight equivalent)</i>	(48.6)	(50.5)	(50.5)
<b>Cows</b> <sup>1</sup>			
<i>- dressed weight</i>	51.0	52.0	52.0
<i>- (live weight equivalent)</i>	(28.0)	(28.5)	(28.5)
<b>Market hogs</b> <sup>1 2</sup>			
<i>- dressed weight</i>	120.5	118.0	117.0
<i>- (live weight equivalent)</i>	(90.4)	(88.5)	(87.8)
	----- dollars per 100 pounds -----		
<b>Milk</b> <sup>3</sup>	25.20	26.80	26.60
	----- cents per dozen -----		
<b>Eggs</b> <sup>4</sup>	103.0	85.0	84.0

<sup>1</sup>Equivalent delivered slaughterhouse for sales on island of production and delivered shippers dock for off-island sales. Factors of 0.549 and 0.75 used to convert dressed weight prices to live weight equivalent for cattle and hogs, respectively.

<sup>2</sup> Includes roasters.

<sup>3</sup> Beginning 1999, monthly average price rounded to the nearest dime.

<sup>4</sup> Prices are for all eggs, equivalent delivered processing plant. Preliminary prices are based on processor reports from Hawaii, Kauai, Maui and adjusted Market Analysis & News Branch wholesale prices for Oahu. Final prices are based on processor reports from all islands.