



HAWAII DEPARTMENT OF AGRICULTURE  
1428 South King Street  
HONOLULU, HI 96814-2512

FACT FINDERS FOR AGRICULTURE

U.S. DEPARTMENT OF AGRICULTURE  
Phone: (808) 973-9588  
FAX: (808) 973-2909

FREQUENCY: Monthly

RELEASED: February 21, 2003

**Note: This release contains information for November and December.**

| IN THIS ISSUE        |        |
|----------------------|--------|
| Poultry              | 1 & 7  |
| Cattle Marketings    | 2 & 8  |
| Commercial Slaughter | 3 & 9  |
| Pasture Condition    | 4 & 10 |
| Milk Production      | 5 & 11 |
| Prices               | 6 & 12 |



## NOVEMBER EGG PRODUCTION UNCHANGED FROM YEAR AGO



Egg production during November, totaled 9.8 million eggs (27,222 cases), unchanged from a year earlier, according to the *Hawaii Agricultural Statistics Service*.

A 5 percent increase in the average rate of lay was offset by an equal decline in the average number of layers on hand to leave production unchanged from last year. The average number of layers on hand during November 2002 was 534,000, compared with 563,000 a year ago, and

537,000 during October 2002. The average rate of lay was 1,835 eggs per 100 layers (61.2 percent lay rate) compared with 1,741 (58.0 percent) a year ago. Cumulative egg production for the first 11 months of 2002 was 107.3 million eggs, 9 percent less than during the same period in 2001.

## U.S. EGG PRODUCTION

U.S. egg production totaled 7.25 billion during November 2002, up 1 percent from last year. Production included 6.23 billion table eggs and 1.02 billion hatching eggs, of which 962 million were broiler-type and 57.0 million were egg-type. The total number of layers during November 2002 averaged 339 million, up slightly from a year earlier. November egg production per 100 layers was 2,140 eggs, up 1 percent from the 2,128 eggs in November 2001. November 2002 contained 21 weekdays, two holidays and five Saturdays, compared to 22 weekdays, two holidays and four Saturdays in November 2001.

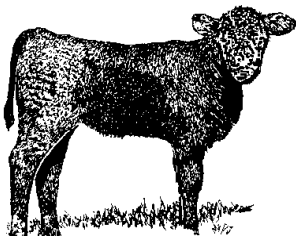
All layers in the U.S. on December 1, 2002 totaled 339 million, up slightly from a year ago. The 339 million layers consisted of 282 million layers producing table or commercial type eggs, 53.8 million layers producing broiler-type hatching eggs, and 2.57 million layers producing egg-type hatching eggs. Rate of lay per day on December 1, 2002, averaged 71.3 eggs per 100 layers, up slightly from a year ago.

Laying flocks in the 30 major egg producing States produced 6.76 billion eggs during November 2002, up slightly from a year ago. The average number of layers during November, at 316 million, was down slightly from a year ago.

**Number of layers and egg production, State of Hawaii, November 2002 <sup>1</sup>**

| County            | Number of layers on hand during month |           |           | Eggs per 100 layer |           | Total eggs produced  |           |              |       |
|-------------------|---------------------------------------|-----------|-----------|--------------------|-----------|----------------------|-----------|--------------|-------|
|                   | Nov. 2001                             | Oct. 2002 | Nov. 2002 | Nov. 2001          | Nov. 2002 | Nov. 2001            | Nov. 2002 | Year-to-date |       |
|                   |                                       |           |           |                    |           |                      |           | 2001         | 2002  |
|                   | ----- Thousands -----                 |           |           | --- Number ---     |           | ----- Millions ----- |           |              |       |
| Hawaii/Kauai/Maui | 145                                   | 127       | 128       | 1,695              | 2,013     | 2.4                  | 2.5       | 30.0         | 26.3  |
| Honolulu          | 418                                   | 409       | 407       | 1,764              | 1,788     | 7.4                  | 7.3       | 87.7         | 81.0  |
| State             | 563                                   | 537       | 534       | 1,741              | 1,835     | 9.8                  | 9.8       | 117.7        | 107.3 |

<sup>1</sup> State totals may not add due to rounding.



## NOVEMBER MARKETINGS OFF 23 PERCENT FROM A YEAR AGO

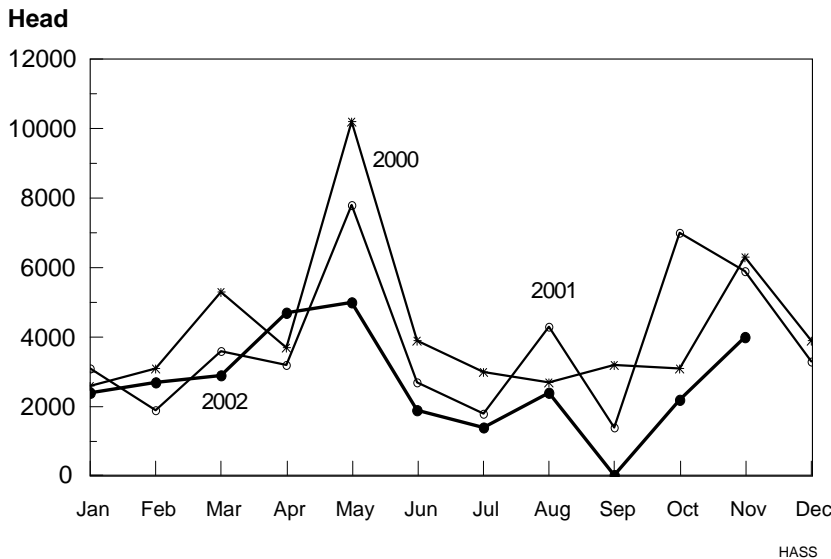
Cattle marketings during November totaled 5,000 head, compared with 6,500 head a year ago and 4,900 head during October 2002. Declines in out-of-state shipments accounted for the 23 percent drop in marketings when compared with a year earlier. Year-to-date marketings at 43,300 head were 21 percent less than the same 11-month period in 2001. Cattle and calves shipped out-of-State during November totaled 4,000 head compared with 5,900 a year earlier and 3,900 during October. Out-of-state marketings during the first eleven months of 2002 was 32,300 head, 24 percent below the same period in 2001.

**Cattle Marketings, State of Hawaii, November 2002**

| Month                     | Total Marketings <sup>1</sup> |        | Exports <sup>2</sup> |        |         |        |                    |        |                     |      |
|---------------------------|-------------------------------|--------|----------------------|--------|---------|--------|--------------------|--------|---------------------|------|
|                           | Number of Head <sup>3</sup>   |        | Number of Head       |        |         |        |                    |        | Average Live Weight |      |
|                           |                               |        | Steers               |        | Heifers |        | Total <sup>3</sup> |        |                     |      |
|                           | 2001                          | 2002   | 2001                 | 2002   | 2001    | 2002   | 2001               | 2002   | 2001                | 2002 |
| November                  | 6,500                         | 5,000  | 3,900                | 2,700  | 2,000   | 1,300  | 5,900              | 4,000  | 440                 | 420  |
| Year-to-date <sup>4</sup> | 54,500                        | 43,300 | 25,300               | 19,600 | 17,400  | 12,700 | 42,700             | 32,300 | 440                 | 430  |

<sup>1</sup> Sum of Commercial Slaughter and Exports.  
<sup>2</sup> Cattle and calves shipped out-of-State.  
<sup>3</sup> Total may not add to sum due to rounding.  
<sup>4</sup> Includes any revisions made to previous month figures.

### CATTLE & CALF OUTSHIPMENTS STATE OF HAWAII, 2000-2002



### SLAUGHTER CATTLE (U.S.)

Weekly Simple Average of Daily Quotations, Choice 2-4

Dollars per 100 pounds

| Week ending      | Steers                 | Heifers                |
|------------------|------------------------|------------------------|
|                  | (1,100 - 1,300 pounds) | (1,000 - 1,200 pounds) |
| from California  |                        |                        |
| 11-2-02          | —                      | —                      |
| 11-16-02         | —                      | —                      |
| from Sioux Falls |                        |                        |
| 11-2-02          | 65.25                  | 65.00                  |
| 11-16-02         | 67.75                  | 67.00                  |

**Source:** Livestock, Meat and Wool Weekly Summary and Statistics; **Agricultural Marketing Service, Livestock and Seed Division**

**DONALD A. MARTIN**  
State Agricultural Statistician

**REGINA W. HIDANO**  
Agricultural Statistician

**NILS K. MORITA**  
Research Statistician

**STEVE GUNN**  
Deputy State Agricultural Statistician

**JOYCE JAY**  
Statistical Assistant

**KAREN A. LEE**  
Statistical Assistant

Contributing by County

|                |                 |
|----------------|-----------------|
| James Yamaki   | Hawaii          |
| Robert Miyake  | Hawaii          |
| Naomi Landgraf | Maui            |
| June Okamura   | Kauai, Honolulu |
| Wendell Au     | Honolulu        |



# PASTURE AND LIVESTOCK CONDITION, DECEMBER 1, 2002



## Hawaii County

**Hilo and Puna:** Very light rainfall amounts reduced soil moisture levels and dried pastures. Most pastures, however, were still in fair to good

condition. The warm, dry conditions, however, did provide State officials and ranchers a chance to burn about 1,000 acres of pastureland in their effort to control the spread of gorse along the eastern slopes of Mauna Kea. Stock water levels were low, but cattle and calves were in good condition.

**Ka'u:** The districts two rain gages recorded only 2 percent of normal rainfall for the month, leaving this district as the driest on the island. Except for some higher elevation Naalehu and Kahuku pastures which were in fair to good condition, most other pastures in the district were dry and in fair condition with only some old feed on hand. The dry condition also prompted the spread of some undesirable weeds in several areas around the district. Some water hauling was necessary. Cattle and calves were in good condition.

**Kona:** Most South and Central Kona pastures were in fair to good condition, while North Kona pastures were in poor to fair condition. Light intermittent showers helped some upper elevation North Kona, Central and South Kona areas; but hot, dry conditions left lower elevation North Kona pastures in poor condition with little old feed available. Soil moisture levels were getting low, while stock water supplies were fair. Cattle and calves were in fair to good condition with some supplemental feeding necessary.

**Kohala:** In general, very dry conditions prevailed during November as rainfall totals were well below normal. Most pastures, which had been green, were starting to dry up and turn brown, nonetheless these

pastures were still able to provide sufficient supplies of forage feed. Lower elevation leeward coastal pastures around Kawaihae and Mahukona were very dry with very little feed available. Stock water supplies were adequate. Cattle and calves were in fair to excellent condition.

**Hamakua:** Mostly sunny and dry conditions kept pastures in fair condition. Forage was dry but in adequate supply in most areas. Water hauling was necessary as stock water supplies were low. Cattle and calves were in fair to good condition, with the feeding of supplements.

## Honolulu County

Rainfall totals were generally light during November. However, ample precipitation during October provided sufficient carryover moisture to maintain grazing areas in fair to good condition. Cattle and calves were in fair to good condition.

## Kauai County

The northwestern portion of the island was the only area to receive near normal amounts of rainfall, while the remainder of the island received only light rains. Most pastures were dry but in fair condition. Cattle and calves were in fair to good condition.

## Maui County

Although rainfall totals, during November, were light and conditions were generally dry, the amount of moisture accumulated from October's heavy rains kept most of these pastures in fair to good condition. Light but timely rainfall helped to stimulate some new grass growth. Cattle and calves were in fair to good condition.

**Rainfall Data Source:** National Weather Service Forecast Office. NWS-NOAA.

**Disclaimer:** Data from Hydronet state-wide network of automated rain gages. Gages are not certified and rainfall information is provided for informational purposes only.

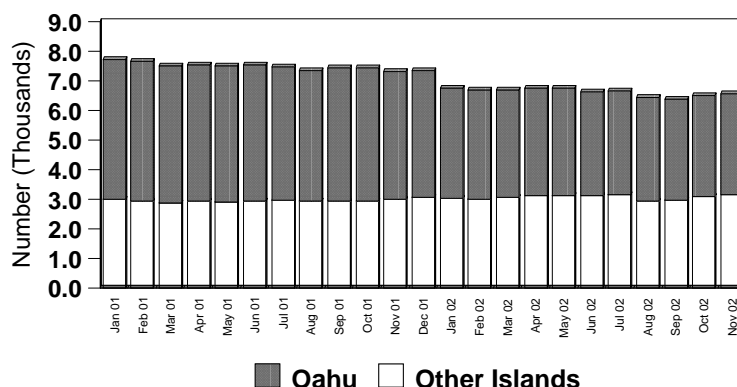
## NOVEMBER MILK LOWER



Hawaii's dairy cows produced **7.4** million pounds of milk in November, compared with 7.5 million during the same month in 2001 but unchanged from the previous month. The cow inventory, both dry and in milk, numbered 6,600 head, 700 less than November 2001 but 100 more than

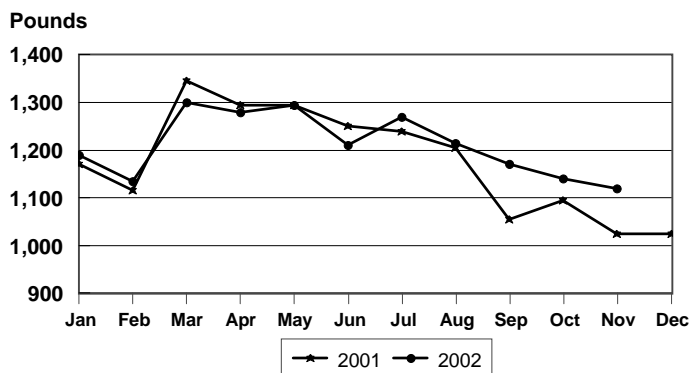
October 2002. During November, cows averaged 1,120 pounds, 5 pounds below November last year and 20 pounds less than October. Production for January through November 2002 was down 10 percent from the comparable period in 2001 to 88.8 million pounds.

**Milk Cows**  
State of Hawaii, 2001-2002



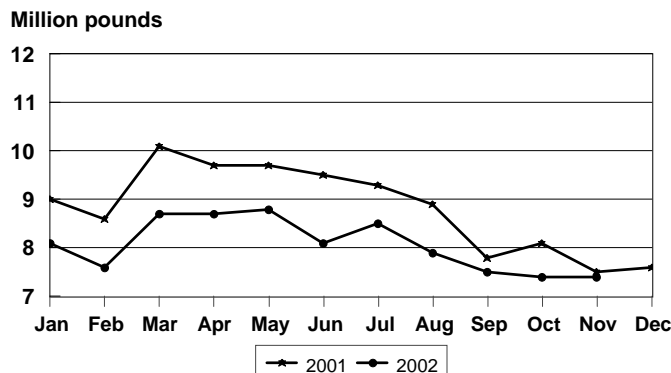
HASS

**Milk Production Per Cow,**  
State of Hawaii, 2001-2002



HASS

**Total Milk Production,**  
State of Hawaii, 2001-2002



HASS

**Milk cows and milk production, State of Hawaii, November 2002**

| County   | All milk cows <sup>123</sup> |           |           | Milk per cow <sup>3</sup> |           | Milk production <sup>13</sup> |           |              |        |
|----------|------------------------------|-----------|-----------|---------------------------|-----------|-------------------------------|-----------|--------------|--------|
|          | Nov. 2001                    | Oct. 2002 | Nov. 2002 | Nov. 2001                 | Nov. 2002 | Nov. 2001                     | Nov. 2002 | Year-to-date |        |
|          | Number                       |           |           | Pounds                    |           | 1,000 pounds                  |           |              |        |
| Hawaii   | 3,020                        | 3,100     | 3,170     | 820                       | 950       | 2,470                         | 2,995     | 31,195       | 32,350 |
| Honolulu | 4,300                        | 3,400     | 3,400     | 1,160                     | 1,295     | 4,995                         | 4,405     | 66,995       | 56,410 |
| State    | 7,300                        | 6,500     | 6,600     | 1,025                     | 1,120     | 7,500                         | 7,400     | 98,200       | 88,800 |

<sup>1</sup> State totals may not add due to rounding.

<sup>2</sup> Includes dry cows and cows on non-commercial dairy farms.

<sup>3</sup> Figures for 2001 are final but preliminary for 2002.

## U.S. PRODUCTION UP 1.8 PERCENT

Milk production in the 20 major States during November totaled 11.7 billion pounds, up 1.8 percent from November 2001. October revised production, at 12.0 billion pounds was up 2.1 percent from October 2001. The October revision represented a decrease of 26 million pounds or 0.2 percent from last month's preliminary production estimate. Production per cow in the 20 major States averaged 1,501 pounds for November, 16 pounds above November 2001. The number of milk cows on farms in the 20 major States was 7.79 million head, 54,000 head more than November 2001, and 1,000 head more than October 2002.

Average farm prices, State of Hawaii, November 2002

| Commodity                                    | November<br>2001                   | October<br>2002 | November<br>2002 |
|--|------------------------------------|-----------------|------------------|
|  | ----- cents per pound -----        |                 |                  |
| <b>Range steers and heifers</b> <sup>1</sup> |                                    |                 |                  |
| - <i>dressed weight</i>                      | 77.0                               | 75.0            | 74.0             |
| - <i>(live weight equivalent)</i>            | ( 42.3)                            | ( 41.2)         | (40.6)           |
| <b>Cows</b> <sup>1</sup>                     |                                    |                 |                  |
| - <i>dressed weight</i>                      | 51.0                               | 53.0            | 52.0             |
| - <i>(live weight equivalent)</i>            | ( 28.0)                            | ( 29.1)         | (28.5)           |
| <b>Market hogs</b> <sup>1 2</sup>            |                                    |                 |                  |
| - <i>dressed weight</i>                      | 111.0                              | 110.0           | 112.0            |
| - <i>(live weight equivalent)</i>            | ( 83.3)                            | ( 82.5)         | (84.0)           |
|  | ----- dollars per 100 pounds ----- |                 |                  |
| <b>Milk</b> <sup>3</sup>                     | 25.80                              | 23.40           | 23.80            |
|  | ----- cents per dozen -----        |                 |                  |
| <b>Eggs</b> <sup>4</sup>                     | 91.0                               | 84.5            | 84.0             |

<sup>1</sup>Equivalent delivered slaughterhouse for sales on island of production and delivered shippers dock for off-island sales. Factors of 0.549 and 0.75 used to convert dressed weight prices to live weight equivalent for cattle and hogs, respectively.

<sup>2</sup>Includes roasters.

<sup>3</sup>Beginning 1999, monthly average price rounded to the nearest dime.

<sup>4</sup>Prices are for all eggs, equivalent delivered processing plant. Preliminary prices are based on processor reports from Hawaii, Kauai, Maui and adjusted Market Analysis & News Branch wholesale prices for Oahu. Final prices are based on processor reports from all islands.