



Hawaii Monthly Livestock Review

National
Agricultural
Statistics
Service

February 7, 2008

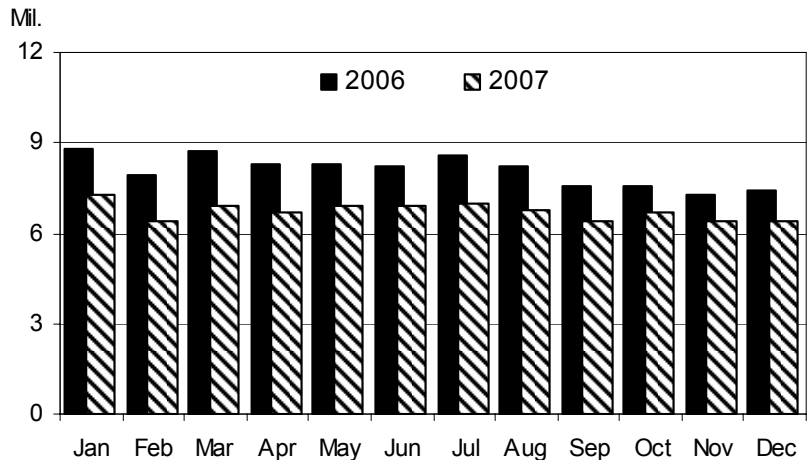
In Cooperation with the Hawaii Department of Agriculture

Hawaii Field Office · 1428 South King Street · Honolulu, HI 96814-2512 · 1-(800)-804-9514 · www.nass.usda.gov

December Egg Production Down 14 Percent From A Year Ago

Hawaii egg production totaled 6.40 million (17,778 cases) in December 2007, down 14 percent from December 2006. The average number of layers on hand during December 2007 was estimated at 360,000, down one percent from November 2007 and down 12 percent from December 2006. The average rate of lay during December 2007 was 1,778 per 100 layers (57.4 percent rate of lay), down 2 percent from December 2006. ■

Monthly Eggs: Total eggs produced, State of Hawaii, 2006 and 2007



EGGS: Number of layers, rate of lay, and production, State of Hawaii, December 2007 and year-to-date totals with comparisons.

County	Number of layers on hand during month			Rate of lay per 100 layers		Total eggs produced			
	Dec. 2006	Nov. 2007	Dec. 2007	Dec. 2006	Dec. 2007	Dec. 2006	Dec. 2007	Year-to-date	
								2006	2007
State ^{1/}	409.0	362.0	360.0	1,809	1,778	7.40	6.40	96.90	80.80

-----thousands----- -----eggs----- -----millions-----

^{1/} County data series discontinued.

Mark Hudson, Director
King Whetstone, Deputy Director

Ron Nakamura, Nils Morita, Research Statisticians
Karen Lee and Joyce Jay, Statistical Assistants

Total Cattle Marketings and Exports

December Cattle Marketings Down 37 Percent From 2006

Total cattle marketings for December 2007 is estimated at 4,300 head, down 37 percent from December 2006. Cumulative cattle marketings for 2007 totaled 58,200 head, up 6 percent from a year ago. ■

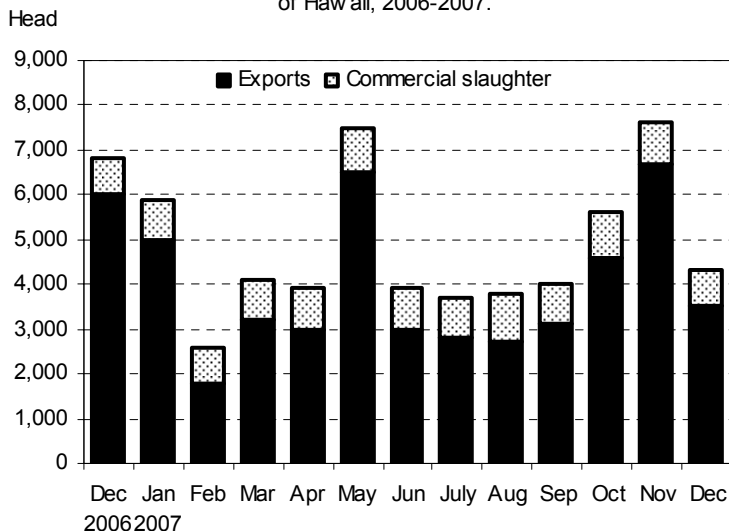
December exports down 42 percent from a year ago

Exports of steers and heifers totaled 3,500 head in December 2007, down 42 percent from a year ago. Out-shipments of steers totaled 2,100 head in December, down 54 percent compared to a year ago. Exports of heifers matched those of a year ago at 1,400 head in December 2007. Cumulative export of steers and heifers is estimated at 47,100 head, 6 percent more than the number exported during 2006. Exports of other classes of cattle were not included. ■

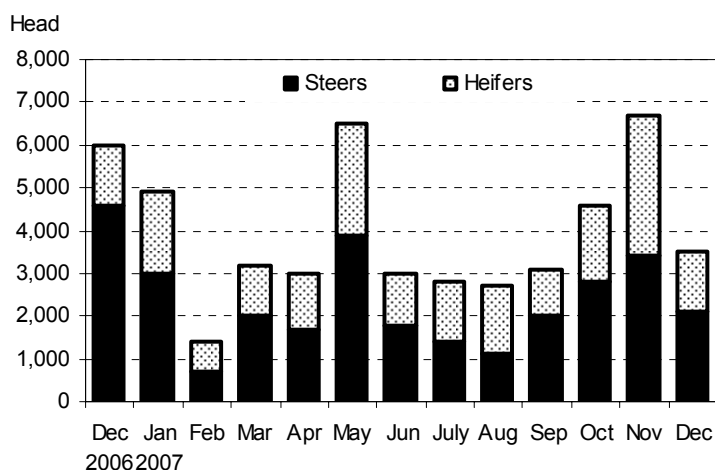
Average live weight tops 427 pounds

The average live weight of steers and heifers exported from Hawaii in December 2007 was 427 pounds, up fractionally from December 2006's average live weight of 425 pounds. ■

Monthly Cattle Marketings: Number of head by type, State of Hawaii, 2006-2007.



Monthly Cattle Exports: Number of head by type, State of Hawaii, 2006-2007.



Cattle: Total marketings, exports by type, and average live weight of exports, State of Hawaii, December 2007 and year-to-date comparison.

Month	Total marketings ^{1/}		Exports by type ^{2/}							
			Steers		Heifers		Total ^{3/}		Average live weight	
	2006	2007	2006	2007	2006	2007	2006	2007	2006	2007
December	6,800	4,300	4,600	2,100	1,400	1,400	6,000	3,500	425	427
Year-to-date ^{4/}	54,800	58,200	26,900	26,700	17,400	20,400	44,300	47,100	417	432

^{1/} Sum of commercial slaughter and exports. Total may not add due to rounding.

^{2/} Cattle and calves shipped out-of-State are classified as steers and heifers; all other classes of animals are not included. Annual totals for all classes of exports are available in the *Statistics of Hawaiian Agriculture* yearbook.

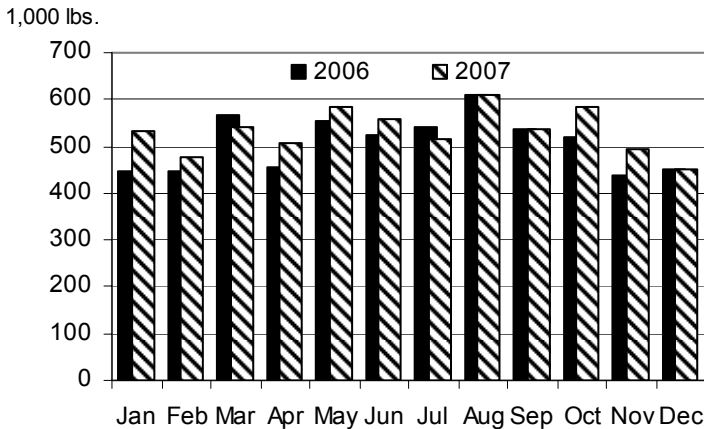
^{3/} Steers and heifers may not add to total due to rounding.

^{4/} Includes any revisions made to previous months.



Cattle and Hogs Commercial Slaughter

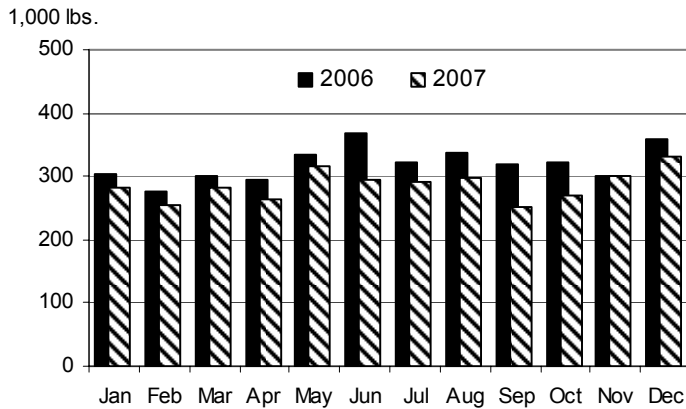
Monthly Commercial Beef Production:
Total Dress Weight, State of Hawaii, 2006 and 2007



Commercial Beef Production Up Fractionally From Year Ago

Hawaii commercial beef production (local slaughter) during December 2007 totaled 452,000 pounds, up fractionally from December 2006. Cumulative beef production (local slaughter) for 2007 totaled 6.4 million pounds, up 5 percent from a year ago. Commercial kill totaled 800 head in December, unchanged from December 2006. Average live weight per head was 1,006 pounds in December 2007, down 3 percent from the average live weight per head in December 2006. ■

Monthly Commercial Pork Production:
Total Dress Weight, State of Hawaii, 2006 and 2007



Commercial Pork Production Down 8 Percent From Year Ago

Hawaii commercial pork production during December 2007 totaled 332,000 pounds, down 8 percent from December 2006. Cumulative pork production during 2007 totaled 3.4 million pounds, down 10 percent from a year ago. Total hog kill was 2,000 head in December 2007, down 9 percent from a year ago. Average live weight per head was 220 pounds in December 2007, down 1 percent from the 221-pound average a year ago. ■

Cattle and Hogs: Total commercial slaughter, average live weight, total live weight, and total dressed weight, State of Hawaii, December 2007 and year-to-date with comparison. ^{1/}

Month	Total commercial slaughter		Average live weight		Total live weight		Total dressed weight ^{2/}	
	2006	2007	2006	2007	2006	2007	2006	2007
Cattle	----- number of head-----		----- Pounds -----		----- 1,000 pounds -----			
December	800	800	1,041	1,006	819	823	450	452
Year-to-date	10,500	11,100	--	--	11,088	11,641	6,087	6,391
Hogs ^{3/}								
December	2,200	2,000	221	220	480	443	360	332
Year-to-date	22,500	21,100	--	--	5,114	4,582	3,836	3,437

-- Not estimated.

^{1/} Excludes non-inspected farm slaughter and live cattle and calves shipped out-of-State; includes custom slaughter.

^{2/} Estimates based on 54.9 dressing percentage for cattle and 75.0 dressing percentage for hogs.

^{3/} Excludes non-inspected farm slaughter; includes custom slaughter and live hog shipments from the mainland for slaughter.



Pasture and Livestock Conditions, January 1, 2008

Hawaii County

December Rainfall ^{1/}		
Station	2007	Normal
Honokaa	7.94"	9.20"
Kamuela upper	8.65"	6.00"
Kahuku Ranch	12.73"	3.00"
Puu Waawaa	4.31"	2.20"
Waikii	6.00"	1.70"

North Hilo, South Hilo, and Puna district pastures in the lower areas were soggy, but feed supplies were ample. Cloudy skies, cooler temperatures, and surplus moisture slowed new grass growth in upper elevation pastures of Hilo. Mid-elevation pastures in Mt. View and Volcano were very soggy, but feed supplies were adequate and new grass prospects were generally good. Pastures at the base of Mauna Kea turned green from beneficial showers.

Ka`u district pasture conditions continued to improve. Showers and sunny days helped to increase feed supplies and provided good conditions for new grass growth along coastal and upper elevations. South Point and Kahuku pastures had generally good quality feed on hand. Upper pastures from Naalehu to Kapapala also had fair to good feed supplies. Keauhou pastures continued to receive moderate to heavy showers in generally dry area.

North and South Kohala district pasture conditions improved substantially. Showers promoted new grass growth and prospects for continued growth were good. Cooler temperatures and shorter days slowed growth in higher elevations. Upslope regions also tended to receive less rain which limited grass growth. Stock water ponds were adequate, but those at the upper elevations were not at full capacity.

North and South Kona district pastures showed grass growth that was better than normal. Soil

moisture was high and prospects for further growth were very good. Stock water ponds were mostly replenished.

Hamakua district pastures continued to improve as showers provided good moisture. At the low elevations, new grass made good progress. In the mid-elevations, cattle were grazing in pastures that had fair to good grass supplies. A few showers reached high elevation pastures and resulted in new grass growth. Grass growth was slowed somewhat by cooler temperatures, cloudy skies, and shorter days.

Maui County

December Rainfall ^{1/}		
Station	2007	Normal
Hana Airport	10.89"	6.10"
Pukalani	9.54"	3.80"
Ulupalakua Ranch	12.78"	3.50"
Molokai Airport	4.45"	4.00"

Early in the month, the Upcountry area of Maui received intense, short-lived showers that damaged some ranches. Fences needed to be repaired, runoff occurred in some pastures, and debris from the flash flooding littered areas below Kula Highway. Upcountry pastures turned green from the added rainfall and were able to provide sufficient forage. Lower elevation pastures in Kula also showed a good amount of available green forage. Pastures in the central section of the island were being utilized more actively and the rains encouraged re-growth in these pastures. Leeward pastures also improved with some showing signs of available green forage. Pastures along the northwest section of Maui benefited from the frequent passing trade showers. Overall, cattle in Maui County remained in fair to good condition. Improved pasture conditions and relatively lower stress from both heat and grazing

were beneficial for cattle. The calving season has begun for many operations and the availability of feed allowed cows to maintain their calves. Some operations have continued to use mineral supplements.

Honolulu County

December Rainfall ^{1/}		
Station	2007	Normal
Hakipuu Mauka	13.91"	10.00"
Lualualei	5.36"	3.80"
Waimanalo	10.56"	5.50"

Frequent showers aided grass growth throughout the county. Overall pasture conditions were good.

Kauai County

December Rainfall ^{1/}		
Station	2007	Normal
Kalaheo	12.57"	6.50"
Kapahi	11.22"	8.10"
Princeville Airport	9.04"	6.70"

Abundant rainfall helped maintain pastures in good condition. Weeds were a problem in some areas. ■

^{1/} Rainfall stations were selected from the National Weather Service's Hydronet system of automated rain gauges. Featured stations may vary each month. All rainfall data has not been quality controlled, and therefore is not certified by the National Weather Service. A complete listing of Hydronet stations, rainfall gauge location maps, and other rainfall data may be found at the National Weather Service's hydrology homepage:

<http://www.prh.noaa.gov/hnl/pages/hydrology.php>

Milk Cows and Milk Production

December Milk Production

Down 56 Percent From Year Ago

Hawaii's dairy cows produced 2.0 million pounds of milk in December 2007, down 56 percent from a year ago. Cumulative milk production for 2007 totaled 35.5 million pounds, down 38 percent from 2006. ■

December's Cow Herd

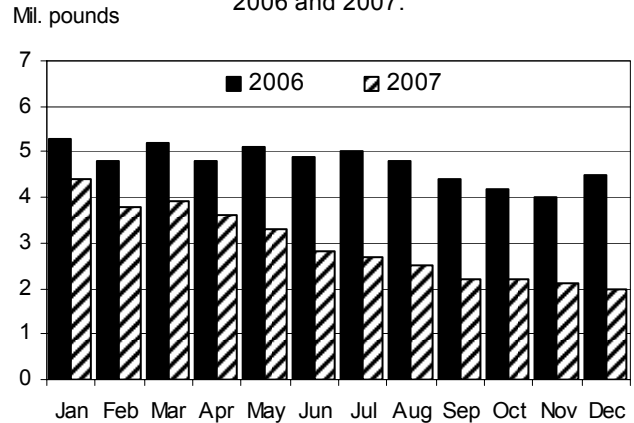
Down 39 Percent From Year Ago

Hawaii's cow herd, both dry and milking, numbered 2,300 head in December 2007, unchanged from November 2007, but down 39 from December 2006. ■

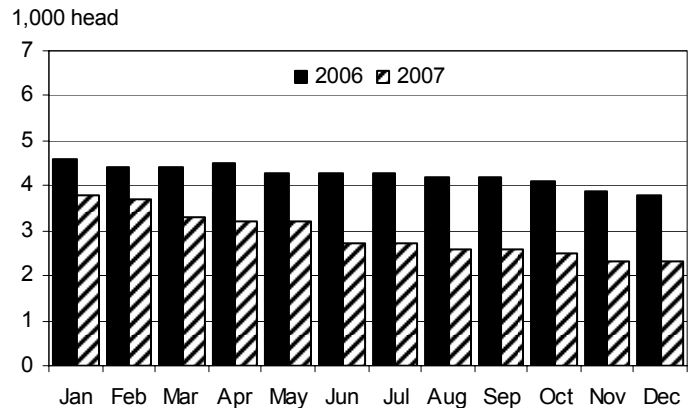
Milk Per Cow Decreases

Average milk per cow is estimated at 840 pounds for December 2007, down 29 percent from last December's average of 1,185 pounds per cow. ■

Milk: Monthly production, State of Hawaii, 2006 and 2007.



Milk: Average number of cows on hand during month, State of Hawaii, 2006 and 2007.



Milk: All milk cows, milk per cow, and total milk production, State of Hawaii, December 2007 and year-to-date with comparisons. ^{1/}

Area	All milk cows ^{2/}			Milk per cow		Milk production			
	Dec. 2006	Nov. 2007	Dec. 2007	Dec. 2006	Dec. 2007	Dec. 2006	Dec. 2007	Year-to-date	
								2006	2007
State	3,800	2,300	2,300	1,185	840	4,500	2,000	57,000	35,500

----- number of head ----- ----- pounds ----- ----- 1,000 pounds -----

^{1/} Figures for 2007 are preliminary.

^{2/} Includes dry cows and cows on non-commercial dairy farms.



Average Farm Prices

December Farm Prices Higher For Market Hogs And Eggs

Steers and heifers

The average dress weight farm price for steers and heifers is estimated at 98.0 cents per pound for December 2007, unchanged from November 2007, but a penny lower than a year ago.

Cows

The average dress weight farm price for cows is estimated at 54.0 cents per pound in December 2007, unchanged from November 2007 and a year ago.

Market hogs

The average dress weight farm price for market hogs is estimated at \$1.19 per pound for December 2007, up a penny from November 2007. Compared to a year ago, the dressed weight for market hogs was down 10.5 cents per pound this December.

Milk

The average farm price for milk was \$30.00 per hundredweight during December 2007, unchanged from November 2007 and up \$3.10 per hundredweight from December 2006.

Eggs

The average farm price for a dozen eggs was \$1.30 in December 2007, up 5 cents per dozen from November 2007. Compared to a year ago, the average farm price for a dozen eggs was up 23.5 cents in December 2007. ■

Livestock Commodity Farm Prices: Average farm prices for steers and heifers, cows, market hogs, milk, and eggs, State of Hawaii, December 2007 with comparisons.

Commodity	December 2006	November 2007	December 2007
----- cents per pound -----			
Steers and heifers ^{1/}			
Dressed weight	99.0	98.0	98.0
Live weight ^{2/}	54.4	53.8	53.8
Cows ^{1/}			
Dressed weight	54.0	54.0	54.0
Live weight ^{2/}	29.6	29.6	29.6
Market hogs ^{1/}			
Dressed weight	129.5	118.0	119.0
Live weight ^{3/}	97.1	88.5	89.3
----- dollars per 100 pounds -----			
Milk.....	26.90	30.00	30.00
----- cents per dozen -----			
Eggs ^{4/}	106.5	125.0	130.0

^{1/} Equivalent delivered slaughterhouse for sales in county of production and delivered shipper's dock for off-island sales.

^{2/} The average live weight price for range steers, heifers, and cows is equal to the dressed weight price multiplied by a factor of 0.549.

^{3/} The average live weight price for market hogs (includes roasters) is equal to the dressed weight price multiplied by a factor of 0.75.

^{4/} Prices are for all eggs, equivalent delivered processing plant. Preliminary prices are based on processor reports from the counties of Hawaii, Kauai, and Maui. Final prices are based on processor reports from all counties.



Commercial red meat production for the United States totaled 4.06 billion pounds in December, up 5 percent from the 3.87 billion pounds produced in December 2006.

Beef production, at 2.06 billion pounds, was slightly above the previous year. Cattle slaughter totaled 2.65 million head, up 1 percent from December 2006. The average live weight was up 2 pounds from the previous year, at 1,302 pounds.

Veal production totaled 10.4 million pounds, 21 percent below December a year ago. Calf slaughter totaled 61,000 head, down 11 percent from December 2006. The average live weight was down 35 pounds from last year, at 289 pounds.

Pork production totaled 1.97 billion pounds, up 10 percent from the previous year. Hog kill totaled 9.69 million head, up 9 percent from December 2006. The average live weight was up 1 pound from the previous year, at 272 pounds.

Lamb and mutton production, at 15.4 million pounds, was down 1 percent from December 2006. Sheep

slaughter totaled 229,100 head, 1 percent above last year. The average live weight was 135 pounds, down 1 pound from December a year ago.

U.S. egg production totaled 7.76 billion during December 2007, down slightly from last year. Production included 6.63 billion table eggs, and 1.13 billion hatching eggs, of which 1.06 billion were broiler-type and 67 million were egg-type. The total number of layers during December 2007 averaged 344 million, down 1 percent from last year. December egg production per 100 layers was 2,256 eggs, up 1 percent from December 2006.

All layers in the U.S. on January 1, 2008 totaled 345 million, down 1 percent from last year. The 345 million layers consisted of 285 million layers producing table or market type eggs, 57.2 million layers producing broiler-type hatching eggs, and 2.75 million layers producing egg-type hatching eggs. Rate of lay per day on January 1, 2008, averaged 72.4 eggs per 100 layers, up 2 percent from January 1, 2007. ■

Excerpts from *Livestock Slaughter* (January 25, 2008) and *Chickens and Eggs* (January 22, 2008) releases.



The Economics of Food, Farming, Natural Resources, and Rural America

Cattle/Beef: Inadequate winter pasture conditions and high feed costs continue to motivate cow slaughter and placements of feeder cattle in 1,000-plus feedlots. As a result, inventories, placements, and marketings of fed cattle during 2008 could vary from typical seasonal patterns.

Cattle/Beef Trade: Increased U.S. cow slaughter and a weak U.S. dollar are affecting the demand for foreign beef in the United States. Canadian cattle continue to be imported to the United States as Canadian market conditions make the United States more attractive for feeding cattle and producing beef.

Hogs/Pork: Larger U.S. swine numbers reflected in the December *Quarterly Hogs and Pigs* report, together with USDA forecasts for year-over-year higher quarterly prices for 2008 corn, foreshadow lower 2008 hog prices and continued hog producer losses. Larger hog supplies in 2008 are expected to pressure hog prices

lower. Live equivalent prices for 51-52 percent lean hogs in 2008 are expected to range between \$41 per cwt (hundredweight) and \$44 per cwt, more than 9 percent below prices in 2007.

Dairy: Higher feed costs are expected to limit dairy production expansion in 2008. Domestic and export demand for cheese will likely keep milk prices from falling precipitously.

Poultry: With continued higher chick placements, broiler meat production is expected to expand in fourth-quarter 2007 and into first-half 2008. With increasing production, prices for many broiler products will be under some downward pressure. Some of the higher production is expected to be taken up by a strong export market. Whole turkey prices remained relatively strong through the end of December. Whole hen turkey prices averaged 82 cents per pound in 2007, the fourth consecutive year that average prices have risen. Egg



U.S. Livestock Roundup (continued)

prices remained at very high levels through the end of 2007, as a smaller table-egg laying flock resulted in lower production. Egg prices are expected to gradually go down as producers respond to the high prices by raising production.

Poultry Trade: Broiler shipments were up, while turkey shipments were slightly above a year ago. Broiler exports totaled 605 million pounds, an increase of 10

percent, while turkey exports totaled 48 million pounds, an increase of less than 1 percent from a year ago. The broiler shipment forecast for the fourth quarter was increased by 90 million pounds due to a strong demand for broiler meat.■

Excerpt from *Livestock, Dairy, & Poultry Outlook/LDP-M-163/* January 18, 2008 Economic Research Service, USDA.