



Hawaii Monthly Livestock Review

National
Agricultural
Statistics
Service

February 12, 2009

In Cooperation with the Hawaii Department of Agriculture

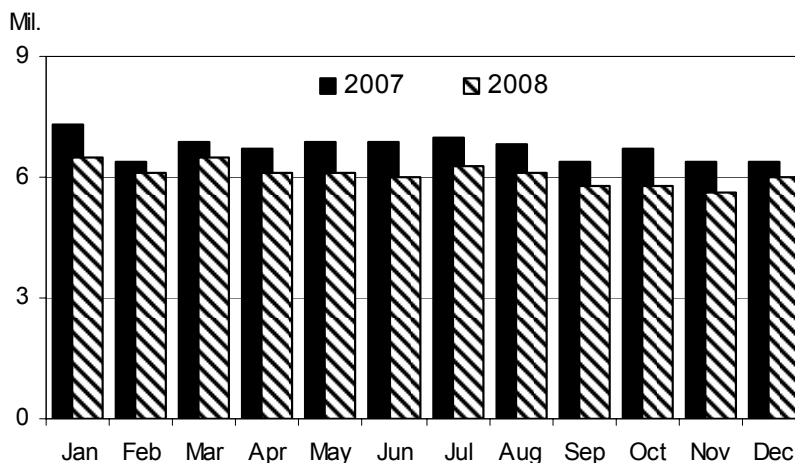
Hawaii Field Office · 1428 South King Street · Honolulu, HI 96814-2512 · 1-(800)-804-9514 · www.nass.usda.gov

CONTENTS		Page
Poultry		
<i>Number of layers, rate of lay, and total eggs.....</i>		1
Cattle		
<i>Total marketings and exports.....</i>		2
<i>Commercial slaughter.....</i>		3
Hogs		
<i>Commercial slaughter.....</i>		3
Pasture and livestock conditions		
<i>County summaries.....</i>		4
Dairy		
<i>Number of milk cows, milk per cow, and total milk production....</i>		5
Farm prices		
<i>Farm prices for selected livestock commodities.....</i>		6
U.S. livestock roundup		
<i>Latest national estimates and outlook reports.....</i>		7-8

December Egg Production Down 6 Percent From A Year Ago

Hawaii egg production totaled 6.00 million (16,667 cases) in December 2008, down 6 percent from December 2007. The decline in egg production from a year ago is due to a corresponding 6 percentage decline in the average number of layers in December 2008 at 338,000. The rate of lay was down slightly from a year ago at 1,775 eggs per 100 layers in December 2008. ■

Monthly Eggs: Total eggs produced, State of Hawaii, 2007 and 2008



EGGS: Number of layers, rate of lay, and production, State of Hawaii, December 2008 and year-to-date totals with comparisons.

County	Number of layers on hand during month			Rate of lay per 100 layers		Total eggs produced			
	Dec. 2007	Nov. 2008	Dec. 2008	Dec. 2007	Dec. 2008	Dec. 2007	Dec. 2008	Year-to-date	
								2007	2008
State ^{1/}	360.0	338.0	338.0	1,778	1,775	6.40	6.00	80.80	72.90

-----thousands----- -----eggs----- -----millions-----

^{1/} County data series discontinued.

Mark Hudson Director
King Whetstone, Deputy Director

Ron Nakamura, Nils Morita, Research Statisticians
Karen Lee and Joyce Jay, Statistical Assistants

Total Cattle Marketings and Exports

December Cattle Marketings Down 9 Percent From 2007

Total cattle marketings for December 2008 is estimated at 3,900 head, down 9 percent from December 2007. The entire decrease in total marketings during December 2008 was due to a 14 percent decrease in exports as the number of head commercially slaughtered increased to 900 head. ■

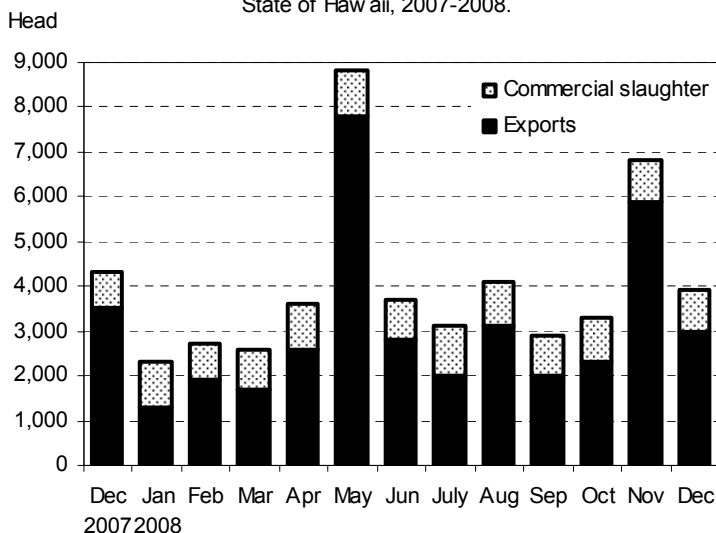
Exports of steers and heifers evenly split in December

Out-of-State shipments of steers and heifers totaled 3,000 head in December 2008, down 14 percent from a year ago. Exports of steers and heifers were evenly split with 1,500 head of each in December 2008. ■

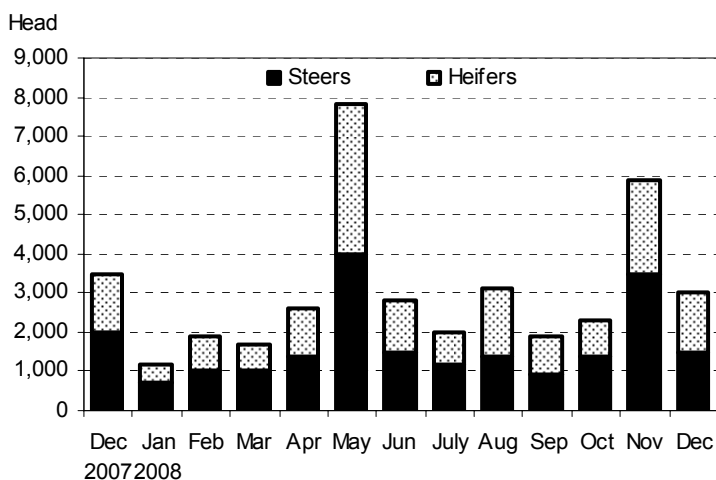
Average live weight of exported cattle lighter than year ago

The average live weight of steers and heifers exported from Hawaii during December 2008 was 439 pounds, 3 percent or 12 pounds lighter than a year ago. ■

Monthly Cattle Marketings: Number of head by type,
State of Hawaii, 2007-2008.



Monthly Cattle Exports: Number of head by type,
State of Hawaii, 2007-2008.



Cattle: Total marketings, exports by type, and average live weight of exports,
State of Hawaii, December 2008 and year-to-date comparison.

Month	Total marketings ^{1/}		Exports by type						Average live weight	
			Steers		Heifers		Total ^{2/}			
	2007	2008	2007	2008	2007	2008	2007	2008	2007	2008
December	4,300	3,900	2,000	1,500	1,500	1,500	3,500	3,000	451	439
Year-to-date ^{3/}	62,100	48,900	26,500	20,100	22,800	17,100	51,000	37,400	423	428

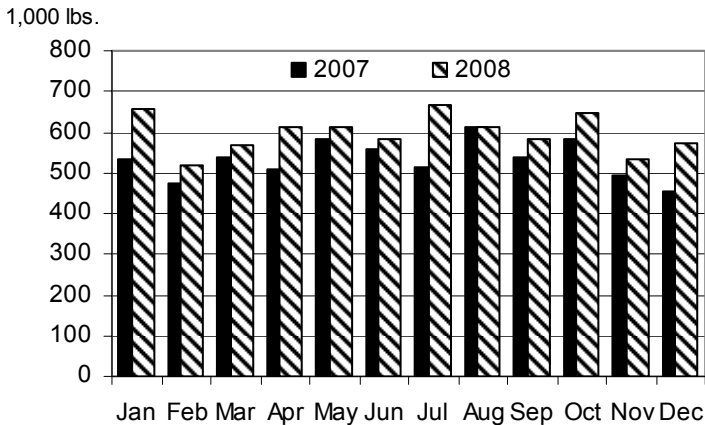
^{1/} Sum of commercial slaughter and exports. Total may not add due to rounding.

^{2/} Cattle and calves shipped out-of-State include: steers, heifers and all other classes. All other classes of animals not shown separately but included in total.

^{3/} Includes any revisions made to previous months.

Cattle and Hogs Commercial Slaughter

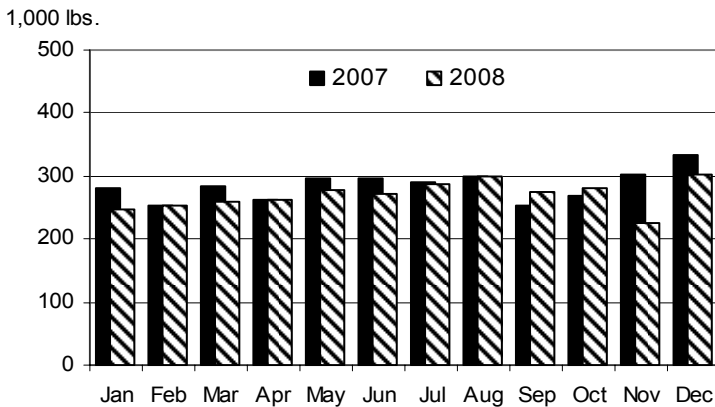
Monthly Commercial Beef Production:
Total Dress Weight, State of Hawaii, 2007 and 2008



December Commercial Beef Production Up 26 Percent From Year Ago

Hawaii commercial beef production (local slaughter) during December 2008 totaled 571,000 pounds, up 26 percent from December 2007. Cumulative production for 2008 totaled 7.2 million pounds, up 12 percent from a year ago. Commercial kill totaled 900 head in December 2008, unchanged from November 2008 but up 13 percent from December 2007. Average live weight per head increased 9 percent from a year ago to 1,100 pounds in December 2008. ■

Monthly Commercial Pork Production:
Total Dress Weight, State of Hawaii, 2007 and 2008



December Commercial Pork Production 9 Percent Lower Than A Year Ago

Hawaii commercial pork production during December 2008 totaled 303,000 pounds, down 9 percent from December 2007. Cumulative production for 2008 totaled 3.2 million pounds, down 5 percent from a year ago. Total hog kill was 1,800 head in December 2008, down 10 percent from a year ago. Average live weight, at 222 pounds per head in December 2008, was 1 percent heavier than a year ago. ■

Cattle and Hogs: Total commercial slaughter, average live weight, total live weight, And total dressed weight, State of Hawaii, December 2008 and year-to-date with comparison. ^{1/}

Month	Total commercial slaughter		Average live weight		Total live weight		Total dressed weight ^{2/}	
	2007	2008	2007	2008	2007	2008	2007	2008
Cattle	----- number of head-----		----- Pounds -----		----- 1,000 pounds -----			
December	800	900	1,006	1,100	823	1,040	452	571
Year-to-date	11,100	11,500	--	--	11,639	13,058	6,390	7,169
Hogs ^{3/}								
December	2,000	1,800	220	222	443	404	332	303
Year-to-date	21,000	19,200	--	--	4,555	4,324	3,416	3,243

-- Not estimated.

^{1/} Excludes non-inspected farm slaughter and live cattle and calves shipped out-of-State; includes custom slaughter.

^{2/} Estimates based on 54.9 dressing percentage for cattle and 75.0 dressing percentage for hogs.

^{3/} Excludes non-inspected farm slaughter; includes custom slaughter and live hog inshipments from the mainland for slaughter.



Pasture and Livestock Conditions, January 1, 2009

Hawaii County

December Rainfall ^{1/}		
Station	2008	Normal
Honokaa	6.19"	9.20"
Kamuela upper	3.61"	6.00"
Kahuku Ranch	4.22"	3.00"
Puu Waawaa	3.66"	2.20"
Waikii	4.94"	1.70"

North Hilo, South Hilo, and Puna district pastures were aided by showers which restored soil moisture to most areas. Stream flow was also elevated and stock water ponds were being replenished. Areas missed by the rains remained relatively dry. Overall, grass growth was generally slow with the onset of cooler temperatures and the shorter day lengths, but prospects were good due to higher soil moisture levels.

Ka'u district pastures varied in condition from poor in the driest areas to fair in others. Rain toward the end of the month helped to restore soil moisture in many areas. Greener pastures were evident, but growth was generally slow and little new grass was produced until very late in the month. Volcanic haze persisted in most areas of the district.

North and South Kohala district pastures were in variable condition. Some areas were still gripped by severe drought conditions. While greener grass was apparent in areas that received showers, cool temperatures and shorter days slowed the pace of growth.

North and South Kona district pasture conditions continued to be dry although prospects have improved. The best prospects for growth were in the upper elevation areas where clouds provided some moisture. Northern areas were very dry, but winter weather patterns brought some relief. In southern Kona, higher amounts of moisture helped spur some growth at the end of the month. However, sustained rainfall is needed to bring meaningful improvement to

drought affected areas. Cooler winter temperatures have also slowed grass growth.

Hamakua district pastures were in poor to fair condition. Upper elevation areas were exceedingly dry and continued to suffer from drought conditions. Greener pastures appeared at the lower elevations after rain episodes, but cooler temperatures, shorter days, and chronically low soil moisture kept growth of new grass to a minimum. Old feed was very low in the higher elevations, but adequate in other areas. Rainfall did help replenish stock water ponds and stream flows which temporarily relieved water hauling activities.

Maui County

December Rainfall ^{1/}		
Station	2008	Normal
Hana	12.46"	6.10"
Haiku	7.97"	7.60"
Ulupalakua	4.06"	3.50"
Molokai Airport	5.80"	4.00"

Pastures continued to show improved grass growth during the month. Along with increased green forage, Makawao pastures also contained a significant amount of fireweed. Pastures along the northwest area of Maui received showers, but overall forage quality there was poor.

Pastures on Molokai were also in improved condition. Most areas showed active grass re-growth.

Most operations in Maui County continued to provide mineral supplements to their animals.

Honolulu County

December Rainfall ^{1/}		
Station	2008	Normal
Hakipuu Mauka	18.29"	10.00"
Lualualei	6.42"	3.80"
Waimanalo	11.09"	5.50"

Heavy rains on December 10 brought favorable moisture for grasses and the overall health of pastures.

Thereafter, light weekly rains and sunny days allowed for improved grass growth in the drier areas. However, low lying pastures in windward areas were in fair to poor conditions as overcast skies, cooler temperatures, and showers kept pastures soggy resulting in slowed growth. Runoff from neighboring crop fields caused adversely affected some pastures in the Ewa area.

Kauai County

December Rainfall ^{1/}		
Station	2008	Normal
Kalaheo	20.97"	6.50"
Kapahi	21.18"	8.10"
Princeville Airport	12.50"	6.70"

Pasture conditions ranged from fair to excellent. East Kauai pastures, which were very dry during most of the year, welcomed the December rains as guinea grass growth took off. South Kauai pastures benefited from a mixture of sunshine and showers. Upper elevation and windward pastures were soggy with poor to fair grass growth due to cloudy skies. Sloped pastures were in good shape. Supplies of stock water were very good. Minimal insect infestation and damage was reported as the rains knocked out the yellow sugarcane aphids. ■

^{1/} Rainfall stations were selected from the National Weather Service's Hydronet system of automated rain gauges. Featured stations may vary each month. All rainfall data has not been quality controlled, and therefore is not certified by the National Weather Service. A complete listing of Hydronet stations, rainfall gauge location maps, and other rainfall data may be found at the National Weather Service's hydrology homepage:

<http://www.prh.noaa.gov/hnl/pages/hydrology.php>

Milk Cows and Milk Production

December Milk Production

Down 10 Percent From Year Ago

Hawaii's dairy cows produced 1.8 million pounds of milk in December 2008, down 10 percent from a year ago. Cumulative milk production for 2008 is estimated at 18.5 million pounds, down 48 percent from 2007. ■

December's Cow Herd

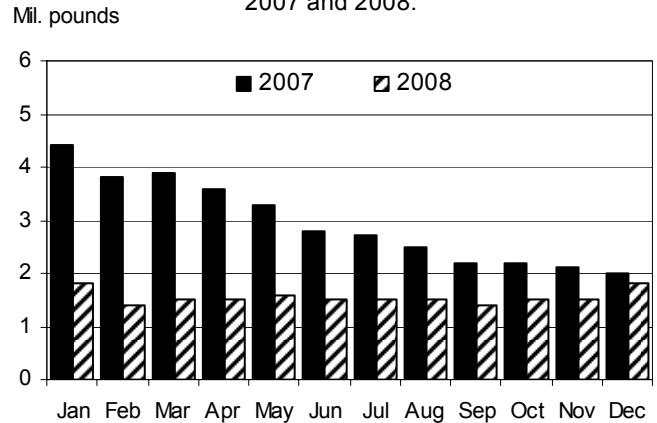
Down 30 Percent From Year Ago

Hawaii's cow herd, both dry and milking, numbered 1,600 head in December 2008; unchanged from November 2008, but down 30 percent from December 2007. Fewer commercial milking operations is the reason for the year-to-year decrease. ■

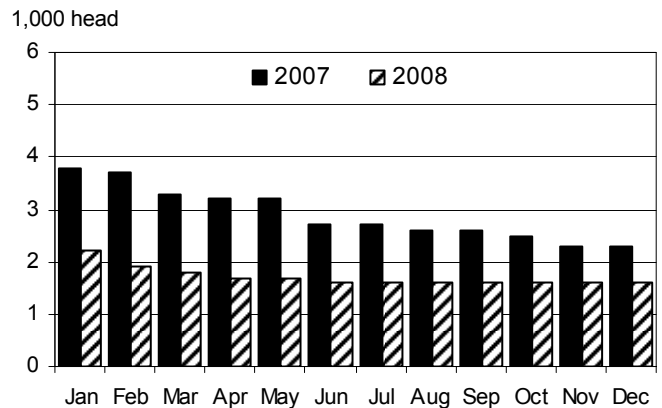
Milk Per Cow Increases

Average milk per cow is estimated at 970 pounds for December 2008, unchanged from November but 15 percent higher than December 2007. ■

Milk: Monthly production, State of Hawaii, 2007 and 2008.



Milk: Average number of cows on hand during month, State of Hawaii, 2007 and 2008.



Milk: All milk cows, milk per cow, and total milk production, State of Hawaii, December 2008 and year-to-date with comparisons. ^{1/}

Area	All milk cows ^{2/}			Milk per cow		Milk production			
	Dec. 2007	Nov. 2008	Dec. 2008	Dec. 2007	Dec. 2008	Dec. 2007	Dec. 2008	Year-to-date	
								2007	2008
State	2,300	1,600	1,600	840	970	2,000	1,800	35,500	18,500

----- number of head ----- ----- pounds ----- ----- 1,000 pounds -----

^{1/} Figures for 2008 are preliminary.

^{2/} Includes dry cows and cows on non-commercial dairy farms.



Average Farm Prices

Farm Prices Higher For Most Livestock Commodities

Steers and heifers

The average dress weight farm price for steers and heifers is estimated at 108.0 cents per pound for December 2008, 2.0 cents per pound higher than November and 6.0 cents per pound higher than in December 2007.

Cows

The average dress weight farm price for cows is estimated at 40.0 cents per pound in December 2008, down 14.0 cents per pound from November and down 13.0 cents per pound from December 2007.

Market hogs

The average dress weight farm price for market hogs is estimated at \$1.33 per pound for December 2008, unchanged from November but 14.0 cents per pound higher than a year ago.

Milk

The average farm price for milk was \$35.40 per hundredweight during December 2008, up 10 cents per hundredweight from November 2008 and \$5.40 per hundredweight higher than a year ago.

Eggs

The average farm price for a dozen eggs was \$1.51 in December 2008, up 1.0 cent per dozen from November 2008 and 21.0 cents per dozen higher than a year ago. ■

Livestock Commodity Farm Prices: Average farm prices for steers and heifers, cows, market hogs, milk, and eggs, State of Hawaii, December 2008 with comparisons.

Commodity	December 2007	November 2008	December 2008
----- cents per pound -----			
Steers and heifers ^{1/}			
Dressed weight	102.0	106.0	108.0
Live weight ^{2/}	56.0	58.2	59.3
Cows ^{1/}			
Dressed weight	53.0	54.0	40.0
Live weight ^{2/}	29.1	29.6	22.0
Market hogs ^{1/}			
Dressed weight	119.0	133.0	133.0
Live weight ^{3/}	89.3	99.8	99.8
----- dollars per 100 pounds -----			
Milk.....	30.00	35.30	35.40
----- cents per dozen -----			
Eggs ^{4/}	130.0	150.0	151.0

^{1/} Equivalent delivered slaughterhouse for sales in county of production and delivered shipper's dock for off-island sales.

^{2/} The average live weight price for range steers, heifers, and cows is equal to the dressed weight price multiplied by a factor of 0.549.

^{3/} The average live weight price for market hogs (includes roasters) is equal to the dressed weight price multiplied by a factor of 0.75.

^{4/} Prices are for all eggs, equivalent delivered processing plant. Preliminary prices are based on processor reports from the counties of Hawaii, Kauai, and Maui. Final prices are based on processor reports from all counties.





Commercial red meat production for the United States totaled 4.16 billion pounds in December, up 3 percent from the 4.06 billion pounds produced in December 2007.

Beef production, at 2.08 billion pounds, was 1 percent above the previous year. Cattle slaughter totaled 2.67 million head, up 1 percent from December 2007. The average live weight was up 1 pound from the previous year, at 1,303 pounds.

Veal production totaled 13.3 million pounds, 28 percent above December a year ago. Calf slaughter totaled 94,100 head, up 54 percent from December 2007. The average live weight was down 43 pounds from last year, at 245 pounds.

Pork production totaled 2.05 billion pounds, up 4 percent from the previous year. Hog kill totaled 10.14 million head, up 5 percent from December 2007. The average live weight was down 2 pounds from the previous year, at 270 pounds.

Lamb and mutton production, at 15.4 million pounds, was up slightly from December 2007. Sheep slaughter

totalled 230,800 head, 1 percent above last year. The average live weight was 134 pounds, down 1 pound from December a year ago.

U.S. egg production totaled 7.78 billion during December 2008, down slightly from last year. Production included 6.71 billion table eggs, and 1.07 billion hatching eggs, of which 1.00 billion were broiler-type and 67 million were egg-type. The total number of layers during December 2008 averaged 341 million, down 1 percent from last year. December egg production per 100 layers was 2,281 eggs, up 1 percent from December 2007.

All layers in the U.S. on January 1, 2009 totaled 341 million, down 1 percent from last year. The 341 million layers consisted of 285 million layers producing table or market type eggs, 53.6 million layers producing broiler-type hatching eggs, and 2.81 million layers producing egg-type hatching eggs. Rate of lay per day on January 1, 2009, averaged 72.9 eggs per 100 layers, up 1 percent from January 1, 2008.■

Excerpts from *Livestock Slaughter* (January 23, 2009) and *Chickens and Eggs* (January 23, 2009) releases.



The Economics of Food, Farming, Natural Resources, and Rural America

Beef: Both commercial cow slaughter and calf slaughter remained at high levels throughout 2008 relative to total U.S. cow inventories. These slaughter levels will likely result in lower production for 2009 and beyond, potentially providing support for fed-cattle prices. Lower prices for energy and feed could mitigate cow and cattle-feeding inventory declines to some extent, while increased exports of U.S. beef could provide further support for cattle and beef prices.

Beef Trade: Exchange rate fluctuations have been a driving factor in imports of Canadian cattle. Beef exports increase in November, although many large markets show a decline or signs of weakening demand. Beef imports increase as demand around the globe decreases.

Pork/Hogs: Recession-squeezed consumer budgets will likely constrain increases in pork and hog prices this year, despite expected reductions in production foreshadowed by the December 1 *Quarterly Hogs and Pigs*.

Dairy: Milk Production is expected to rise incrementally in 2009. However, weaker demand, especially for exports, will force prices sharply lower for all products. The Government will support prices for the first time since 2006.

Poultry: With continued lower chick placements, broiler meat production is expected to decline in fourth-quarter 2008 and through the first three quarters of 2009. With falling production, prices for many broiler products are



U.S. Livestock Roundup (continued)

expected to gradually show some upward pressure, but will be held back at first due to high stock levels. Whole turkey prices remained relatively strong through the end of December. Whole hen turkey prices averaged 87 cents per pound in the fourth quarter and 88 cents per pound in 2008, the fifth consecutive year that average prices have risen. Egg prices remained at relatively high levels through the end of 2008, as a continued smaller table egg laying flock has resulted in lower production. Egg prices in 2009 are expected to gradually strengthen through the Easter period and then decline seasonally.

Lamb: Fourth-quarter 2008 commercial production of lamb and mutton is estimated at 42 million pounds, about 13 percent below the fourth quarter of 2007. Lamb and mutton imports, which in the past have offset tight domestic supplies, are also forecast to slow considerably in the fourth quarter. Despite tight supplies, prices were unable to break out of the price range held for most of 2008 due to the softer-than-expected fourth-quarter demand.■

Excerpt from *Livestock, Dairy, & Poultry Outlook/LDP-M-175/* January 22, 2009 Economic Research Service, USDA.