

HAWAII PAPAYAS



National Agricultural Statistics Service

Hawaii Agricultural Statistics Service
Hawaii Department of Agriculture
Box 22159, Honolulu, HI 96823-2159
(808) 973-9588
FAX (808) 973-2909
Internet Web Site <http://www.nass.usda.gov/hi>

Frequency: Monthly
Release: February 13, 2002

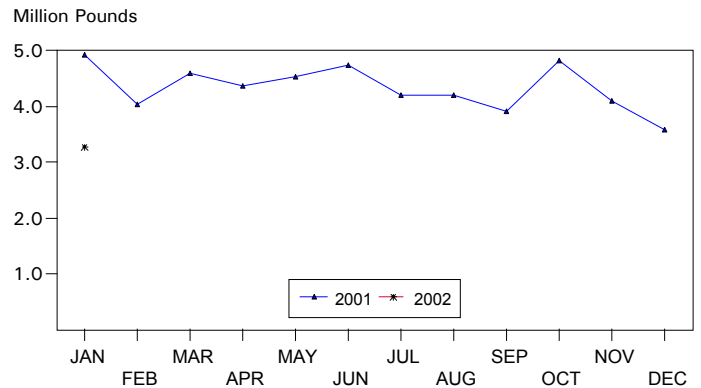
2002 PRODUCTION BEGINS WITH LOWER OUTPUT

Hawaii fresh papaya production is estimated at 3.3 million pounds for January 2002, 8 percent less than last month and 33 percent lower than a year ago.

Weather conditions for January began with frequent sunny periods and light showers which allowed farmers to catch up on regular field work. However, wet and cloudy weather conditions in the second half of January hindered normal field operations.

Papaya growers are expected to receive an estimated 34.0 cents per pound for fresh fruit in January, 31 percent (8.0 cents) higher than last month, and 62 percent (13.0 cents) higher than last year.

FRESH PAPAYA UTILIZATION STATE OF HAWAII, 2001-2002 ¹



¹2001-2002 Preliminary.

HASS

FRESH PAPAYA UTILIZATION, STATE OF HAWAII, MONTH OF: January 2002

Island	Sales				Year ago	Year-to-date	
	Local ¹	Intrastate	Out-of-State	Total fresh		2001	2002
	<i>1,000 pounds</i>						
Hawaii.....	204	1,036	1,400	2,640	3,865	3,865	2,640
Kauai.....	22	58	15	95	165	165	95
Maui/Molokai/Oahu ²	528	2	20	550	900	900	550
State.....	754	1,096	1,435	3,285	4,930	4,930	3,285

¹ On island of production.

² Combined to avoid disclosure of individual operations.

PAPAYA ACREAGE, STATE OF HAWAII, 2001 WITH COMPARISONS

Island	Total acreage in crop							
	March		June		September		December	
	2000	2001	2000	2001	2000	2001	2000	2001
Hawaii.....	2,100	2,270	1,600	3,000	2,050	2,360	2,040	2,275
Kauai.....	325	120	340	105	235	75	185	80
Maui/Molokai/Oahu.....	665	470	645	430	470	255	470	220
State.....	3,090	2,860	2,585	3,535	2,755	2,690	2,695	2,575
Total bearing acres								
Hawaii.....	1,010	1,660	950	1,670	1,300	1,675	1,495	1,625
Kauai.....	185	85	200	80	160	50	125	60
Maui/Molokai/Oahu.....	460	280	435	285	265	200	255	150
State.....	1,655	2,025	1,585	2,035	1,725	1,925	1,875	1,835

FRESH PAPAYA FARM PRICE, STATE OF HAWAII, 2001-2002

Year	Jan.	Feb.	Mar.	Apr.	May	June	July	Aug.	Sep.	Oct.	Nov.	Dec.	Average
	<i>Cents per pound</i>												
2001 ¹	21.0	28.0	32.0	37.0	35.0	32.0	33.0	30.0	27.0	25.0	25.0	26.0	
2002 ¹	34.0												

¹Preliminary.