

# HAWAII PAPAYAS



National Agricultural Statistics Service

Hawaii Agricultural Statistics Service  
Hawaii Department of Agriculture  
Box 22159, Honolulu, HI 96823-2159  
(808) 973-9588  
FAX (808) 973-2909  
Internet Web Site <http://www.nass.usda.gov/hi>

Frequency: Monthly  
Release: March 15, 2001

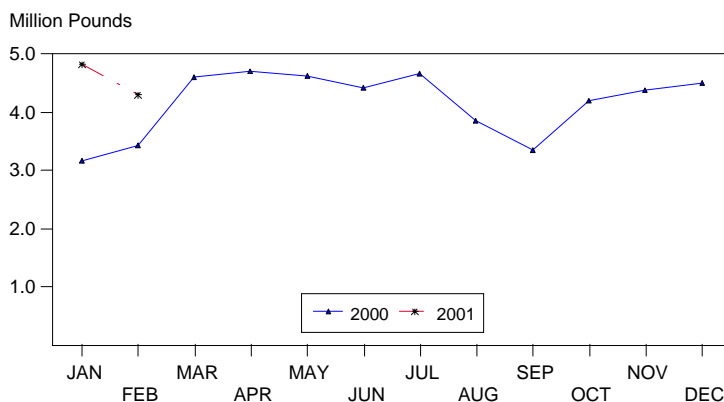
## FEBRUARY FRESH OUTPUT PEGGED AT 4.3 MILLION POUNDS

Hawaii fresh papaya production is estimated at 4.3 million pounds for February, 11 percent lower than January but 25 percent higher than February 2000.

Weather conditions during February were variable. Dry conditions during the first week were followed by rains, sometimes heavy, the next two weeks. Sunnier skies and light showers returned during the last week.

Papaya growers are expected to receive an estimated 28.0 cents per pound for fresh fruit in February, 33 percent (7.0 cents) higher than January but 32 percent (13.0 cents) below last year.

## FRESH PAPAYA UTILIZATION STATE OF HAWAII, 2000-2001<sup>1</sup>



<sup>1</sup> 2000-2001 Preliminary.

HASS

## FRESH PAPAYA UTILIZATION, STATE OF HAWAII, MONTH OF: February 2001

Island	Sales				Year ago	Year-to-date	
	Local <sup>1</sup>	Intrastate	Out-of-State	Total fresh		2000	2001
	<i>1,000 pounds</i>						
Hawaii.....	118	1,202	1,900	3,220	2,020	3,730	7,000
Kauai.....	64	36	75	175	400	785	330
Maui/Molokai/Oahu <sup>2</sup> .....	574	6	320	900	1,020	2,100	1,800
State.....	756	1,244	2,295	4,295	3,440	6,615	9,130

<sup>1</sup> On island of production.

<sup>2</sup> Combined to avoid disclosure of individual operations.

DONALD A. MARTIN  
State Agricultural Statistician

ARTHUR Y. OSAKI  
Research Statistician

SANDY K. NAKASONE  
Statistical Assistant

**PAPAYA ACREAGE, STATE OF HAWAII, 2000 WITH COMPARISONS**

Island	Total acreage in crop							
	March		June		September		December	
	1999	2000	1999	2000	1999	2000	1999	2000
Hawaii.....	2,890	2,095	2,545	1,600	2,275	2,050	2,300	2,040
Kauai.....	250	330	270	340	300	235	330	185
Maui/Molokai/Oahu.....	595	615	595	635	670	470	600	470
State.....	3,735	3,040	3,410	2,575	3,245	2,755	3,230	2,695
	Total bearing acres							
Hawaii.....	1,725	1,010	1,440	950	995	1,190	1,030	1,495
Kauai.....	110	185	150	200	160	160	155	125
Maui/Molokai/Oahu.....	265	385	435	435	460	260	450	255
State.....	2,100	1,580	2,025	1,585	1,615	1,610	1,635	1,875

**FRESH PAPAYA FARM PRICE, STATE OF HAWAII, 2000-2001**

Year	Jan.	Feb.	Mar.	Apr.	May	June	July	Aug.	Sep.	Oct.	Nov.	Dec.	Average
	<i>Cents per pound</i>												
2000 <sup>1</sup>	37.0	41.0	36.0	35.0	37.0	32.0	28.0	27.0	33.0	29.0	26.0	20.0	
2001 <sup>1</sup>	21.0	28.0											

<sup>1</sup> Preliminary.