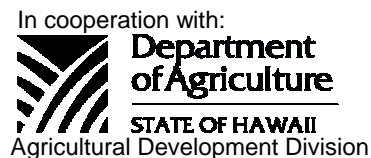




National Agricultural Statistics Service
 USDA, Hawaii Field Office
 1428 S. King Street
 Honolulu, HI 96814-2512
 Telephone: (808) 973-9588
 FAX: (808) 973-2909
 Internet Web Site <http://www.nass.usda.gov/hi>

HAWAII PAPAYAS



Frequency: Monthly

Release: April 11, 2006

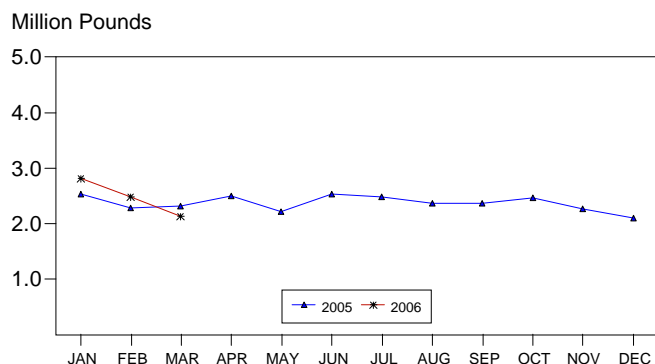
MARCH AND FIRST QUARTER FRESH PAPAYA DOWN

Hawaii fresh papaya utilization is estimated at 2.14 million pounds for March 2006, down 14 percent from last month and 21 percent lower than the same month last year. Year-to-date sales for the first quarter of 2006 totaled 7.44 million pounds, 4 percent below the comparable total in 2005.

Wet weather, heavy at times, continued from mid-February through March resulted in record breaking rainfall across the State. Harder hit areas of Windward Oahu and Kauai experienced flooding and erosion, leaf and fruit drop, disease outbreaks, and tree losses. Harvesting is expected to be light from these fields. Growers around the State stepped up spraying efforts to control disease outbreaks and weed growth. Puna orchards experienced steady flowering and boost of new growth. New seedlings made a favorable start. Intermittent dry periods benefited orchards.

Papaya growers are expected to receive an estimated 45.0 cents per pound for fresh fruit in March, 25 percent (9.0 cents) more than last month, and up 13 percent (5.0 cents) from March 2005.

PAPAYA: Fresh Utilization, State of Hawaii, 2005-2006 ¹



¹ 2005-2006 Preliminary.

USDA, NASS, Hawaii Field Office

FRESH PAPAYA UTILIZATION, STATE OF HAWAII, MONTH OF: MARCH 2006

Island	Sales				Year ago	Year-to-date	
	Local ¹	Intrastate	Out-of-State	Total fresh		2005	2006
<i>1,000 pounds</i>							
Hawaii.....	107	1,083	750	1,940	2,415	6,840	6,730
Kauai.....	20	0	0	20	30	100	65
Maui/Molokai/Oahu ²	102	3	70	175	270	780	645
State.....	229	1,086	820	2,135	2,715	7,720	7,440

¹ On island of production.

² Combined to avoid disclosure of individual operations.

PAPAYA ACREAGE, STATE OF HAWAII, 2005 WITH COMPARISONS

Island	Total acreage in crop							
	March		June		September		December	
	2005	2006	2005		2005		2,005	
Hawaii.....	2,265	1,850	2,355		2,200		2,070	
Kauai.....	35	30	40		30		30	
Maui/Molokai/Oahu.....	190	180	205		150		190	
State.....	2,490	2,060	2,600		2,380		2,290	
Total bearing acres								
Hawaii.....	1,270	1,620	1,405		1,325		1,630	
Kauai.....	25	20	30		25		20	
Maui/Molokai/Oahu.....	140	135	145		105		130	
State.....	1,435	1,775	1,580		1,455		1,780	

FRESH PAPAYA FARM PRICE, STATE OF HAWAII, 2005-2006

Year	Jan.	Feb.	Mar.	Apr.	May	June	July	Aug.	Sep.	Oct.	Nov.	Dec.	Average
	<i>Cents per pound</i>												
2005 ¹	31.0	37.0	40.0	42.0	44.0	37.0	37.0	36.0	35.0	32.0	36.0	38.0	
2006 ¹	34.0	36.0	45.0										

¹ Preliminary.

MARK E. HUDSON
Director

STEVE P. GUNN
Deputy Director

REGINA W. HIDANO
Agricultural Statistician

SANDY K. NAKASONE
Statistical Assistant

Contributions by:

NAOMI LANDGRAF
Maui County

ROBERT MIYAKE & DAVID MATTICE
Hawaii County

JUNE OKAMURA & JOSEFINA RASAY
Honolulu County

JUNE OKAMURA
Kauai County