

# HAWAII PAPAYAS



National Agricultural Statistics Service

Hawaii Agricultural Statistics Service  
 Hawaii Department of Agriculture  
 Box 22159, Honolulu, HI 96823-2159  
 (808) 973-9588  
 FAX (808) 973-2909  
 Internet Web Site <http://www.nass.usda.gov/hi>

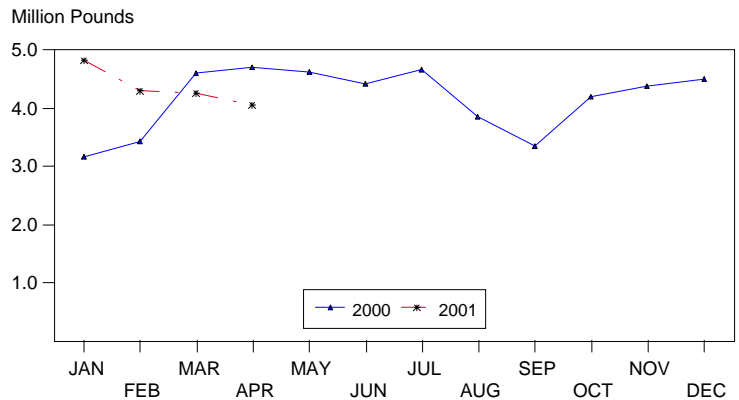
Frequency: Monthly  
 Release: May 9, 2001

## APRIL FRESH PAPAYA PRODUCTION 5 PERCENT LOWER THAN MARCH

Hawaii fresh papaya production is estimated at 4.07 million pounds for April, 5 percent lower than March and 14 percent lower than April 2000. Year-to-date fresh sales were 10 percent higher than the same 4-month period of 2000.

April weather conditions were variable with showers and sunshine over major papaya producing areas. Incidence of Papaya Ringspot virus was low due to close monitoring and roguing of infected trees.

## FRESH PAPAYA UTILIZATION STATE OF HAWAII, 2000-2001<sup>1</sup>



<sup>1</sup> 2000-2001 Preliminary.

HASS

Papaya growers are expected to receive an estimated 37.0 cents per pound for fresh fruit in April, 16 percent (5.0 cents) higher than March and 6 percent (2.0 cents) higher than last year.

## FRESH PAPAYA UTILIZATION, STATE OF HAWAII, MONTH OF: April 2001

| Island                               | Sales               |            |              |             | Year ago | Year-to-date |        |
|--------------------------------------|---------------------|------------|--------------|-------------|----------|--------------|--------|
|                                      | Local <sup>1</sup>  | Intrastate | Out-of-State | Total fresh |          | 2000         | 2001   |
|                                      | <i>1,000 pounds</i> |            |              |             |          |              |        |
| Hawaii.....                          | 121                 | 1,079      | 1,750        | 2,950       | 3,130    | 10,000       | 13,110 |
| Kauai.....                           | 40                  | 45         | 80           | 165         | 570      | 1,840        | 655    |
| Maui/Molokai/Oahu <sup>2</sup> ..... | 542                 | 4          | 404          | 950         | 1,000    | 4,085        | 3,700  |
| State.....                           | 703                 | 1,128      | 2,234        | 4,065       | 4,700    | 15,925       | 17,465 |

<sup>1</sup> On island of production.

<sup>2</sup> Combined to avoid disclosure of individual operations.

DONALD A. MARTIN  
 State Agricultural Statistician

ARTHUR Y. OSAKI  
 Research Statistician

SANDY K. NAKASONE  
 Statistical Assistant

**PAPAYA ACREAGE, STATE OF HAWAII, 2001 WITH COMPARISONS**

| Island                 | Total acreage in crop |       |       |      |           |      |          |      |
|------------------------|-----------------------|-------|-------|------|-----------|------|----------|------|
|                        | March                 |       | June  |      | September |      | December |      |
|                        | 2000                  | 2001  | 2000  | 2001 | 2000      | 2001 | 2000     | 2001 |
| Hawaii.....            | 2,100                 | 2,270 | 1,600 |      | 2,050     |      | 2,040    |      |
| Kauai.....             | 325                   | 120   | 340   |      | 235       |      | 185      |      |
| Maui/Molokai/Oahu..... | 665                   | 470   | 635   |      | 470       |      | 470      |      |
| State.....             | 3,090                 | 2,860 | 2,575 |      | 2,755     |      | 2,695    |      |
|                        | Total bearing acres   |       |       |      |           |      |          |      |
| Hawaii.....            | 1,010                 | 1,660 | 950   |      | 1,190     |      | 1,495    |      |
| Kauai.....             | 185                   | 85    | 200   |      | 160       |      | 125      |      |
| Maui/Molokai/Oahu..... | 460                   | 280   | 435   |      | 260       |      | 255      |      |
| State.....             | 1,655                 | 2,025 | 1,585 |      | 1,610     |      | 1,875    |      |

**FRESH PAPAYA FARM PRICE, STATE OF HAWAII, 2000-2001**

| Year              | Jan.                   | Feb. | Mar. | Apr. | May  | June | July | Aug. | Sep. | Oct. | Nov. | Dec. | Average |
|-------------------|------------------------|------|------|------|------|------|------|------|------|------|------|------|---------|
|                   | <i>Cents per pound</i> |      |      |      |      |      |      |      |      |      |      |      |         |
| 2000 <sup>1</sup> | 37.0                   | 41.0 | 36.0 | 35.0 | 37.0 | 32.0 | 28.0 | 27.0 | 33.0 | 29.0 | 26.0 | 20.0 |         |
| 2001 <sup>1</sup> | 21.0                   | 28.0 | 32.0 | 37.0 |      |      |      |      |      |      |      |      |         |

<sup>1</sup> Preliminary.