

HAWAII PAPAYAS



National Agricultural Statistics Service

Hawaii Agricultural Statistics
Hawaii Department of Agriculture
1428 S King Street, Honolulu, HI 96814-2512
(808) 973-9588
FAX (808) 973-2909
Internet Web Site <http://www.nass.usda.gov/hi>

Frequency: Monthly
Release: May 13, 2005

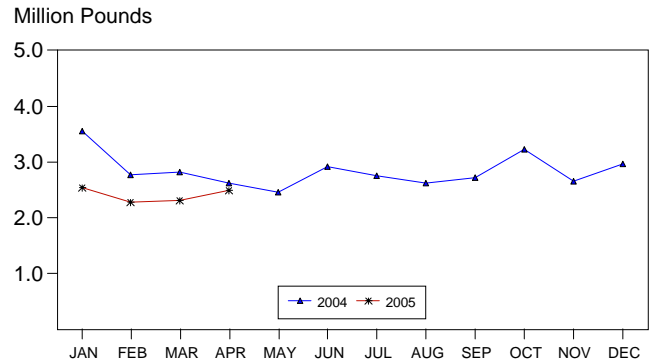
APRIL FRESH UTILIZATION FORECAST AT 2.5 MILLION POUNDS

Hawaii fresh papaya utilization is estimated at 2.50 million pounds for April 2005, 8 percent higher than last month, but 5 percent less than a year ago. Year-to-date fresh sales trail the same 4-month period of 2004 by 18 percent.

Weather conditions were mostly favorable during April with a mix of light rainfall and sunny periods.

Papaya growers are expected to receive an estimated 42.0 cents per pound for fresh fruit in April, 5 percent (2.0 cents) more than last month, but 7 percent (3.0 cents) less from a year ago.

FRESH PAPAYA UTILIZATION STATE OF HAWAII, 2004-2005¹



¹ 2005 Preliminary.

HAS

FRESH PAPAYA UTILIZATION, STATE OF HAWAII, MONTH OF: April 2005

Island	Sales				Year ago	Year-to-date	
	Local ¹	Intrastate	Out-of-State	Total fresh		2004	2005
	<i>1,000 pounds</i>						
Hawaii.....	125	1,185	900	2,210	2,295	10,420	8,465
Kauai.....	39	1	0	40	50	160	140
Maui/Molokai/Oahu ²	172	8	70	250	285	1,200	1,025
State.....	336	1,194	970	2,500	2,630	11,780	9,630

¹ On island of production.

² Combined to avoid disclosure of individual operations.

MARK E. HUDSON
Director

STEVE P. GUNN
Deputy Director

ARTHUR Y. OSAKI
Research Statistician

SANDY K. NAKASONE
Statistical Assistant

PAPAYA ACREAGE, STATE OF HAWAII, 2005 WITH COMPARISONS

Island	Total acreage in crop							
	March		June		September		December	
	2004	2005	2004	2005	2004	2005	2004	2005
Hawaii.....	1,900	2,265	1,800		1,920		2,050	
Kauai.....	50	35	40		40		40	
Maui/Molokai/Oahu.....	160	190	160		150		140	
State.....	2,110	2,490	2,000		2,110		2,230	
	Total bearing acres							
Hawaii.....	1,000	1,270	900		1,220		1,245	
Kauai.....	35	25	30		25		25	
Maui/Molokai/Oahu.....	125	140	125		125		130	
State.....	1,160	1,435	1,055		1,370		1,400	

FRESH PAPAYA FARM PRICE, STATE OF HAWAII, 2004-2005

Year	Jan.	Feb.	Mar.	Apr.	May	June	July	Aug.	Sep.	Oct.	Nov.	Dec.	Average
	<i>Cents per pound</i>												
2004 ¹	30.0	31.0	39.0	45.0	53.0	37.0	41.0	37.0	37.0	35.0	33.0	30.0	
2005 ¹	31.0	37.0	40.0	42.0									

¹ Preliminary.