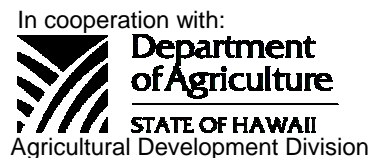




National Agricultural Statistics Service
 USDA, Hawaii Field Office
 1428 S. King Street
 Honolulu, HI 96814-2512
 Telephone: (808) 973-9588
 FAX: (808) 973-2909
 Internet Web Site <http://www.nass.usda.gov/hi>

HAWAII PAPAYAS



Frequency: Monthly

Release: May 16, 2006

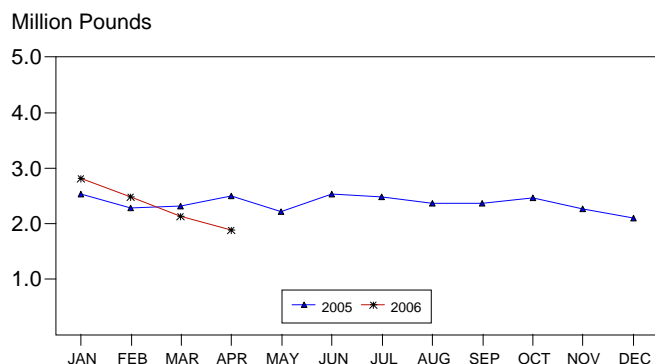
FRESH PAPAYA UTILIZATION LOWER FOR APRIL AND A YEAR AGO

Hawaii fresh papaya utilization is estimated at 1.89 million pounds for April 2006, down 12 percent from last month and 30 percent lower than a year ago. Year-to-date sales for the four months of 2006 totaled 9.33 million pounds, 11 percent below the comparable total in 2005.

April weather was generally warmer and drier, ending six weeks of continuous wet weather. Nutritional deficiencies due to leaching and disease outbreaks have been reported in orchards exposed to previous month continuous rains. Sunny conditions and longer days were beneficial for young plantings. Normal farming activities were underway.

Papaya growers are expected to receive an estimated 49.0 cents per pound for fresh fruit in April, 9 percent (4.0 cents) more than last month, and up 17 percent (7.0 cents) from April 2005.

PAPAYA: Fresh Utilization, State of Hawaii, 2005-2006 ¹



¹ 2005-2006 Preliminary.

USDA, NASS, Hawaii Field Office

FRESH PAPAYA UTILIZATION, STATE OF HAWAII, MONTH OF: April 2006

Island	Sales				Year ago	Year-to-date	
	Local ¹	Intrastate	Out-of-State	Total fresh		2005	2006
	<i>1,000 pounds</i>						
Hawaii.....	119	791	750	1,660	2,395	9,235	8,390
Kauai.....	15	0	0	15	40	140	80
Maui/Molokai/Oahu ²	136	4	70	210	265	1,045	855
State.....	270	795	820	1,885	2,700	10,420	9,325

¹ On island of production.

² Combined to avoid disclosure of individual operations.

PAPAYA ACREAGE, STATE OF HAWAII, 2005 WITH COMPARISONS

Island	Total acreage in crop							
	March		June		September		December	
	2005	2006	2005	2006	2005	2006	2,005	2006
Hawaii.....	2,265	1,850	2,355		2,200		2,070	
Kauai.....	35	30	40		30		30	
Maui/Molokai/Oahu.....	190	180	205		150		190	
State.....	2,490	2,060	2,600		2,380		2,290	
Total bearing acres								
Hawaii.....	1,270	1,620	1,405		1,325		1,630	
Kauai.....	25	20	30		25		20	
Maui/Molokai/Oahu.....	140	135	145		105		130	
State.....	1,435	1,775	1,580		1,455		1,780	

FRESH PAPAYA FARM PRICE, STATE OF HAWAII, 2005-2006

Year	Jan.	Feb.	Mar.	Apr.	May	June	July	Aug.	Sep.	Oct.	Nov.	Dec.	Average
	<i>Cents per pound</i>												
2005 ¹	31.0	37.0	40.0	42.0	44.0	37.0	37.0	36.0	35.0	32.0	36.0	38.0	
2006 ¹	34.0	36.0	45.0	49.0									

¹ Preliminary.

MARK E. HUDSON
Director

STEVE P. GUNN
Deputy Director

REGINA W. HIDANO
Agricultural Statistician

SANDY K. NAKASONE
Statistical Assistant

Contributions by:

NAOMI LANDGRAF
Maui County

ROBERT MIYAKE & DAVID MATTICE
Hawaii County

JUNE OKAMURA & JOSEFINA RASAY
Honolulu County

JUNE OKAMURA
Kauai County