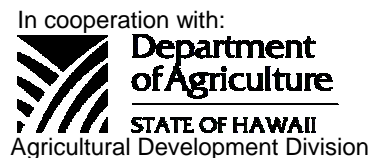




HAWAII PAPAYAS



National Agricultural Statistics Service
 USDA, Hawaii Field Office
 1428 S. King Street
 Honolulu, HI 96814-2512
 Telephone: (808) 973-9588
 FAX: (808) 973-2909
 Internet Web Site <http://www.nass.usda.gov/hi>

Frequency: Monthly

Release: May 15, 2007

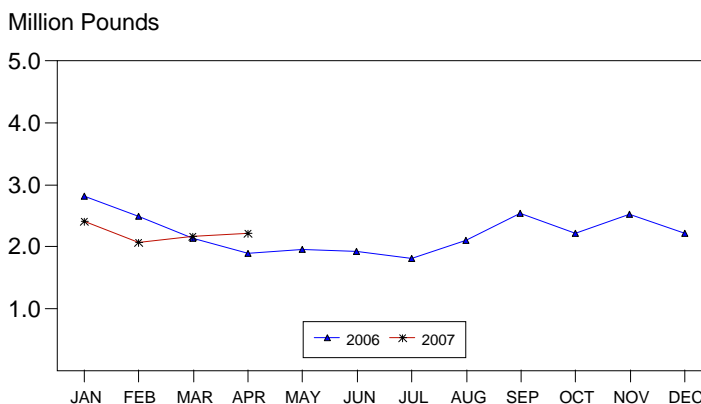
APRIL FRESH SALES HIGHER

Hawaii fresh papaya utilization is estimated at 2.2 million pounds for April 2007, up 3 percent from March 2007 and 29 percent more than April 2006.

Favorable weather conditions continued for papayas in April, encouraging flowering and fruit development. Young orchards made good progress with some acreage coming into production soon. Fruit columns are full with few gaps. Production from other fields has been declining, abandoned, or neglected. Warm weather has spurred weed growth but controlled under current spraying programs.

Papaya growers are expected to receive an estimated 48.0 cents per pound for fresh fruit in April, up 2 percent (1.0 cent) from last month, but 2 percent down (1.0 cent) from a year ago.

PAPAYA: Fresh Utilization, State of Hawaii, 2006-2007¹



¹ Data for 2006 and 2007 are Preliminary.

FRESH PAPAYA UTILIZATION, STATE OF HAWAII, MONTH OF: April 2007

County	Sales				Year ago	Year-to-date	
	Local ¹	Intrastate	Out-of-State	Total fresh		2006	2007
	<i>1,000 pounds</i>						
Hawaii.....	137	1,218	675	2,030	1,500	8,150	8,170
Honolulu/Kauai/Maui ²	133	7	60	200	225	945	700
State.....	270	1,225	735	2,230	1,725	9,095	8,870

¹ On island of production.

² Kauai and Maui combined with Honolulu to avoid disclosure of individual operations.

PAPAYA ACREAGE, STATE OF HAWAII, 2007 WITH COMPARISONS

County	Total acreage in crop							
	March		June		September		December	
	2006	2007	2006	2007	2006	2007	2006	2007
Hawaii.....	1,850	1,750	1,575		1,965		2,170	
Honolulu/Kauai/Maui ¹	220	185	170		175		180	
State.....	2,070	1,935	1,745		2,140		2,350	
	Total bearing acres							
Hawaii.....	1,620	750	1,385		1,205		1,025	
Honolulu/Kauai/Maui ¹	165	120	125		120		110	
State.....	1,785	870	1,510		1,325		1,135	

¹ Kauai and Maui combined with Honolulu to avoid disclosure of individual operations.

FRESH PAPAYA FARM PRICE, STATE OF HAWAII, 2006-2007

Year	Jan.	Feb.	Mar.	Apr.	May	June	July	Aug.	Sep.	Oct.	Nov.	Dec.	Average
	<i>Cents per pound</i>												
2006 ¹	34.0	36.0	45.0	49.0	58.0	51.0	48.0	40.0	38.0	38.0	37.0	34.0	
2007 ¹	38.0	41.0	47.0	48.0									

¹ Preliminary.

MARK E. HUDSON
Director

STEVE P. GUNN
Deputy Director

REGINA W. HIDANO
Agricultural Statistician

SANDY K. NAKASONE
Statistical Assistant

Contributions by:

NAOMI LANDGRAF
Maui County

ROBERT MIYAKE & DAVID MATTICE
Hawaii County

JUNE OKAMURA
Honolulu County & Kauai County