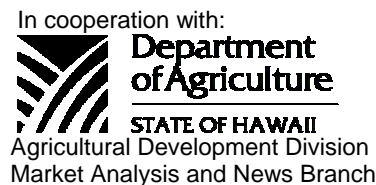




# HAWAII PAPAYAS



National Agricultural Statistics Service  
 USDA, Hawaii Field Office  
 1428 S. King Street  
 Honolulu, HI 96814-2512  
 Telephone: (808) 973-9588  
 FAX: (808) 973-2909  
 Internet Web Site <http://www.nass.usda.gov/hi>

Frequency: Monthly

Release: June 12, 2008

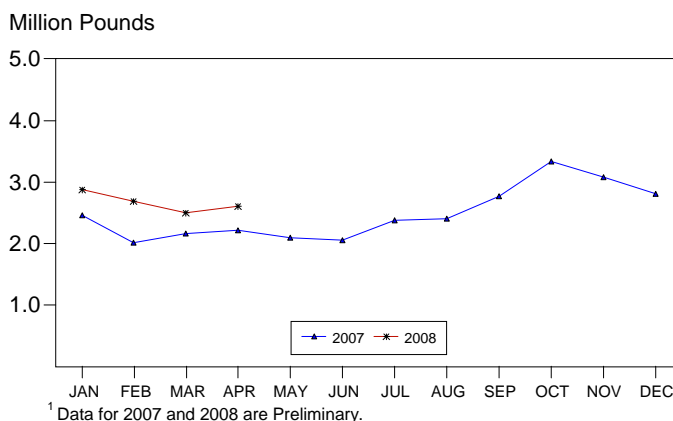
## HIGHER OUTPUT CONTINUES IN APRIL

Hawaii fresh papaya utilization is estimated at 2.6 million pounds for April 2008, up 4 percent from March 2008 and 7 percent more than April 2007. Output for the first four months of 2008 is estimated at 10.7 million pounds, 15 percent more than the comparable period last year.

Warm, sunny weather and longer days benefited crop development and maintenance in April. Gaps were noticed in the fruit columns of drier fields which may affect future supplies. On Hawaii island, breezy conditions brought volcanic haze to some papaya growing areas but fields appeared to be unaffected. Preparations for summer planting were underway.

Hawaii fresh papaya farm price for April is estimated at 51.0 cents per pound, up 2 percent (1.0 cent) from last month and 6 percent (3.0 cents) more than a year ago.

**PAPAYA: Fresh Utilization,  
State of Hawaii, 2007-2008<sup>1</sup>**



## FRESH PAPAYA UTILIZATION, STATE OF HAWAII, 2008 WITH COMPARISONS<sup>1</sup>

Month	Sales				Year ago	Year-to-date	
	Local <sup>2</sup>	Intrastate	Out-of-State	Total fresh		2007	2008
	<i>1,000 pounds</i>						
March	217	1,133	1,155	2,505	2,345	6,825	8,080
April	219	1,221	1,175	2,615	2,445	9,270	10,695

<sup>1</sup> Data are preliminary for 2007 and 2008.

<sup>2</sup> On island of production.

## PAPAYA ACREAGE, STATE OF HAWAII, 2008 WITH COMPARISONS <sup>1</sup>

County	Total acreage in crop							
	March		June		September		December	
	2007	2008	2007	2008	2007	2008	2007	2008
Hawaii.....	1,895	1,820	1,540		1,905		1,860	
Honolulu/Kauai/Maui <sup>2</sup> .....	185	200	195		200		190	
<b>State.....</b>	<b>2,080</b>	<b>2,020</b>	<b>1,735</b>		<b>2,105</b>		<b>2,050</b>	

Total harvested acres <sup>3</sup>								
Hawaii.....	1,175	1,300	675		1,240		1,135	
Honolulu/Kauai/Maui <sup>2</sup> .....	120	125	125		135		120	
<b>State.....</b>	<b>1,295</b>	<b>1,425</b>	<b>800</b>		<b>1,375</b>		<b>1,255</b>	

<sup>1</sup> Data are preliminary for 2007 and 2008. <sup>2</sup> Kauai and Maui combined with Honolulu to avoid disclosure of individual operations. <sup>3</sup> Bearing acres where papayas were harvested.

## FRESH PAPAYA FARM PRICE, STATE OF HAWAII, 2007-2008 <sup>1</sup>

Year	Jan.	Feb.	Mar.	Apr.	May	June	July	Aug.	Sep.	Oct.	Nov.	Dec.	Average
	<i>Cents per pound</i>												
2007	38.0	41.0	47.0	48.0	49.0	52.0	47.0	40.0	37.0	37.0	37.0	37.0	
2008	41.0	43.0	50.0	51.0									

<sup>1</sup> Data are preliminary for 2007 and 2008.

MARK E. HUDSON  
Director

KING J. WHETSTONE  
Deputy Director

REGINA W. HIDANO  
Agricultural Statistician

SANDY K. NAKASONE  
Statistical Assistant

Contributions by:

NAOMI LANDGRAF  
Maui County

DAVID MATTICE  
Hawaii County

JUNE OKAMURA  
Honolulu County & Kauai County

NASDA ENUMERATORS