

HAWAII PAPAYAS



National Agricultural Statistics Service

Hawaii Agricultural Statistics
Hawaii Department of Agriculture
1428 S King Street, Honolulu, HI 96814-2512
(808) 973-9588
FAX (808) 973-2909
Internet Web Site <http://www.nass.usda.gov/hi>

Frequency: Monthly
Release: June 15, 2004

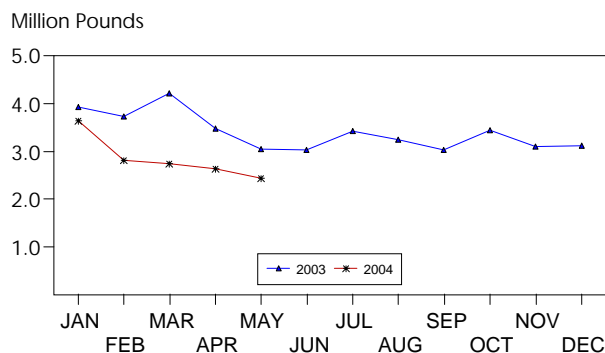
MAY FRESH UTILIZATION DOWN 20 PERCENT FROM YEAR AGO

Hawaii fresh papaya utilization is estimated at 2.4 million pounds for May 2004, down 8 percent from last month and 20 percent lower than a year ago. Lower harvested acreage than last year and unfavorable weather conditions during the past few months have kept a lid on current output.

Weather conditions over the major producing areas were variable during May. Mostly sunny skies and periods of light trade wind showers provided fair to good growing conditions.

Papaya growers are expected to receive an estimated 53.0 cents per pound for fresh fruit in May, 18 percent (8.0 cents) more than last month and 39 percent (15.0 cents) higher than a year ago.

FRESH PAPAYA UTILIZATION STATE OF HAWAII, 2003-2004¹



¹ 2004 Preliminary.

HASS

FRESH PAPAYA UTILIZATION, STATE OF HAWAII, MONTH OF: May 2004

Island	Sales				Year ago	Year-to-date	
	Local ¹	Intrastate	Out-of-State	Total fresh		2003	2004
	<i>1,000 pounds</i>						
Hawaii.....	110	1,075	930	2,115	2,620	16,315	12,640
Kauai.....	50	0	0	50	50	260	210
Maui/Molokai/Oahu ²	226	4	40	270	370	1,835	1,425
State.....	386	1,079	970	2,435	3,040	18,410	14,275

¹ On island of production.

² Combined to avoid disclosure of individual operations.

DONALD A. MARTIN
Director

ARTHUR Y. OSAKI
Research Statistician

SANDY K. NAKASONE
Statistical Assistant

PAPAYA ACREAGE, STATE OF HAWAII, 2004 WITH COMPARISONS

Island	Total acreage in crop							
	March		June		September		December	
	2003	2004	2003	2004	2003	2004	2003	2004
Hawaii.....	2,015	1,900	1,925		2,165		2,000	
Kauai.....	60	50	65		45		50	
Maui/Molokai/Oahu.....	185	160	180		160		160	
State.....	2,260	2,110	2,170		2,370		2,210	
Total bearing acres								
Hawaii.....	1,385	1,000	1,440		1,430		1,205	
Kauai.....	40	40	40		30		35	
Maui/Molokai/Oahu.....	90	125	95		105		110	
State.....	1,515	1,165	1,575		1,565		1,350	

FRESH PAPAYA FARM PRICE, STATE OF HAWAII, 2003-2004

Year	Jan.	Feb.	Mar.	Apr.	May	June	July	Aug.	Sep.	Oct.	Nov.	Dec.	Average
	<i>Cents per pound</i>												
2003 ¹	28.0	32.0	35.0	36.0	38.0	38.0	35.0	32.0	34.0	31.0	29.0	29.0	
2004 ¹	30.0	31.0	39.0	45.0	53.0								

¹Preliminary.