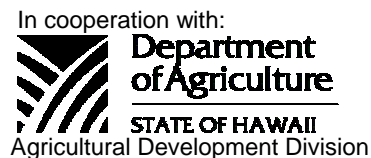




National Agricultural Statistics Service
 USDA, Hawaii Field Office
 1428 S. King Street
 Honolulu, HI 96814-2512
 Telephone: (808) 973-9588
 FAX: (808) 973-2909
 Internet Web Site <http://www.nass.usda.gov/hi>

HAWAII PAPAYAS



Frequency: Monthly

Release: June 14, 2006

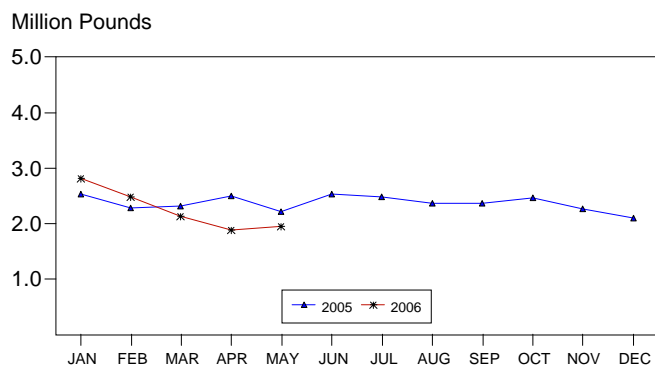
MAY PAPAYA OUTPUT DOWN FROM LAST YEAR

Hawaii fresh papaya utilization is estimated at 1.96 million pounds for May 2006, increasing 4 percent from last month, but decreasing 28 percent from a year ago. Year-to-date sales for the first five months of 2006 totaled 11.3 million pounds, 14 percent lower than the same period in 2005.

Papaya orchards experienced favorable weather in May with adequate moisture and longer, sunny days. Young plantings made good progress. New leaves and steady flowering were noticed. The effects of the continuous wet weather earlier in the year were evident with ongoing replanting and abandoning efforts occurring in exposed fields.

Papaya growers are expected to receive an estimated 58.0 cents per pound for fresh fruit in May, 18 percent (9.0 cents) more than last month, and up 32 percent (14.0 cents) from May 2005.

PAPAYA: Fresh Utilization, State of Hawaii, 2005-2006¹



¹ 2005-2006 Preliminary.

USDA, NASS, Hawaii Field Office

FRESH PAPAYA UTILIZATION, STATE OF HAWAII, MONTH OF: May 2006

County	Sales				Year ago	Year-to-date	
	Local ¹	Intrastate	Out-of-State	Total fresh		2005	2006
	<i>1,000 pounds</i>						
Hawaii.....	106	969	700	1,775	2,405	11,640	10,165
Honolulu/Kauai/Maui ²	102	13	70	185	335	1,520	1,120
State	208	982	770	1,960	2,740	13,160	11,285

¹ On island of production.

² Kauai and Maui combined with Honolulu to avoid disclosure of individual operations.

PAPAYA ACREAGE, STATE OF HAWAII, 2005 WITH COMPARISONS

County	Total acreage in crop							
	March		June		September		December	
	2005	2006	2005	2006	2005	2006	2,005	2006
Hawaii.....	2,265	1,850	2,355		2,200		2,070	
Honolulu/Kauai/Maui ¹	225	210	245		180		220	
State.....	2,490	2,060	2,600		2,380		2,290	
	Total bearing acres							
Hawaii.....	1,270	1,620	1,405		1,325		1,630	
Honolulu/Kauai/Maui ¹	165	155	175		130		150	
State.....	1,435	1,775	1,580		1,455		1,780	

¹ Kauai and Maui combined with Honolulu to avoid disclosure of individual operations.

FRESH PAPAYA FARM PRICE, STATE OF HAWAII, 2005-2006

Year	Jan.	Feb.	Mar.	Apr.	May	June	July	Aug.	Sep.	Oct.	Nov.	Dec.	Average
	<i>Cents per pound</i>												
2005 ¹	31.0	37.0	40.0	42.0	44.0	37.0	37.0	36.0	35.0	32.0	36.0	38.0	
2006 ¹	34.0	36.0	45.0	49.0	58.0								

¹ Preliminary.

MARK E. HUDSON
Director

STEVE P. GUNN
Deputy Director

REGINA W. HIDANO
Agricultural Statistician

SANDY K. NAKASONE
Statistical Assistant

Contributions by:

NAOMI LANDGRAF
Maui County

ROBERT MIYAKE & DAVID MATTICE
Hawaii County

JUNE OKAMURA & JOSEFINA RASAY
Honolulu County

JUNE OKAMURA
Kauai County