

# HAWAII PAPAYAS



National Agricultural Statistics Service

Hawaii Agricultural Statistics Service  
Hawaii Department of Agriculture  
1428 S King Street, Honolulu, HI 96814-2512  
(808) 973-9588  
FAX (808) 973-2909  
Internet Web Site <http://www.nass.usda.gov/hi>

Frequency: Monthly  
Release: July 11, 2002

## FRESH PAPAYA UTILIZATION CONTINUES DECLINE

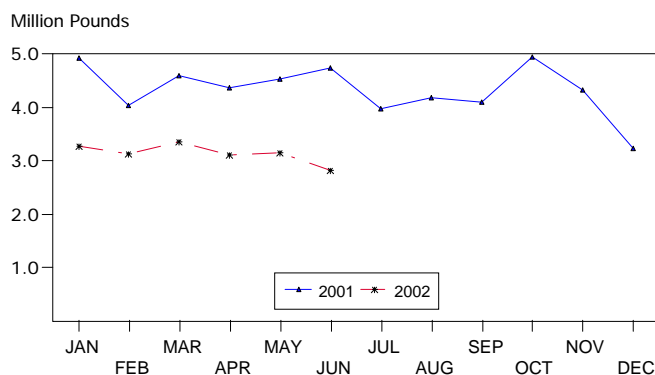
Hawaii fresh papaya utilization is estimated at 2.82 million pounds for June 2002, 11 percent lower than last month, and 41 percent lower than a year ago.

Area in crop totaled 2,205 acres, 11 percent lower than March 2002 and 38 percent less than a year ago. Harvested area totaled 1,730 acres, 11 percent less than March 2002 and 15 percent less than June 2001.

Weather conditions in June were variable with scattered showers and sunshine over major papaya producing areas. Non-irrigated orchards have adequate soil moisture. Incidence of Papaya Ringspot Virus was low. Yields were below expectations due to fruit scarring and diseases.

Papaya growers are expected to receive an estimated 40.0 cents per pound for fresh fruit in June, 5 percent (2.0 cents) lower than last month, but 40 percent (11.5 cents) higher than a year ago.

## FRESH PAPAYA UTILIZATION STATE OF HAWAII, 2001-2002<sup>1</sup>



<sup>1</sup> 2002 Preliminary.

HASS

## FRESH PAPAYA UTILIZATION, STATE OF HAWAII, MONTH OF: June 2002

Island	Sales				Year ago	Year-to-date	
	Local <sup>1</sup>	Intrastate	Out-of-State	Total fresh		2001	2002
	<i>1,000 pounds</i>						
Hawaii.....	161	1,039	950	2,150	3,505	20,470	14,925
Kauai.....	80	15	10	105	190	1,055	640
Maui/Molokai/Oahu <sup>2</sup> .....	541	4	20	565	1,050	5,700	3,315
State.....	782	1,058	980	2,820	4,745	27,225	18,880

<sup>1</sup> On island of production.

<sup>2</sup> Combined to avoid disclosure of individual operations.

**PAPAYA ACREAGE, STATE OF HAWAII, 2002 WITH COMPARISONS**

Island	Total acreage in crop							
	March		June		September		December	
	2001	2002	2001	2002	2001	2002	2001	2002
Hawaii.....	2,270	2,200	3,000	1,920	2,360		2,275	
Kauai.....	120	75	105	75	75		80	
Maui/Molokai/Oahu.....	470	210	430	210	255		220	
State.....	2,860	2,485	3,535	2,205	2,690		2,575	
	Total bearing acres							
Hawaii.....	1,660	1,700	1,670	1,490	1,675		1,620	
Kauai.....	85	60	80	60	55		60	
Maui/Molokai/Oahu.....	280	175	285	180	210		145	
State.....	2,025	1,935	2,035	1,730	1,940		1,825	

**FRESH PAPAYA FARM PRICE, STATE OF HAWAII, 2001-2002**

Year	Jan.	Feb.	Mar.	Apr.	May	June	July	Aug.	Sep.	Oct.	Nov.	Dec.	Average
	<i>Cents per pound</i>												
2001	23.8	26.9	30.0	31.7	28.3	28.5	30.0	27.7	27.3	26.0	26.5	28.9	27.9
2002 <sup>1</sup>	34.0	35.0	34.0	38.0	42.0	40.0							

<sup>1</sup>Preliminary.

## 2001 Papaya Output Continues Rebound

Hawaii's papaya industry recorded its fourth straight year of increased output in 2001. This comes after yearly declines from 1993 through 1997. Total output of 55.0 million pounds was 1 percent higher than 2000.

The State's harvested papaya acreage was estimated at 1,950 acres for 2001, 18 percent higher than 2000. However, yields declined 15 percent. Lower yields in 2001 were due to a shift in harvested acreage to the lower yielding Kapoho variety. In 2001, bearing acres of the higher yielding Rainbow variety stood at 41 percent of the total bearing acreage compared to 54 percent in 2000. Also, during 2000, a high percentage of Rainbow was in the first year, higher yielding, stage.

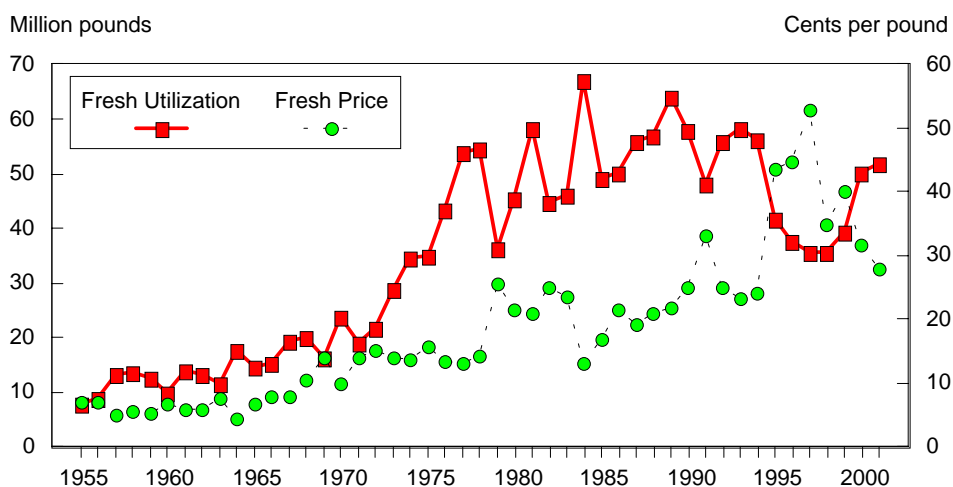
Growers have continued to farm the Kapoho variety even though it is susceptible to papaya ringspot virus. This, to satisfy the Japanese market, a major export market, which does not accept the biotechnology variety Rainbow. Routine field inspections and roguing of infected trees kept losses due to the papaya ringspot virus light.

Fresh output from the Island of Hawaii represented 77 percent of the State's total in 2001. In comparison, the Island of Hawaii accounted for over 90

percent of the State's fresh papaya production from 1986 through 1996. Papaya ringspot virus has surely contributed to the expansion of orchards outside the Island of Hawaii, but this could only come with the increased availability of agricultural land after the closure of sugarcane plantations.

Value of utilization (fresh and processed) was pegged at \$14.6 million, 9 percent lower than 2000. Papaya price of 26.5 cents per pound declined 10 percent from 2000 due to continued higher yields. Low prices at the end of 2000 and into the beginning of 2001 prompted a few large growers to exit papaya production.

FRESH PAPAYA UTILIZATION & PRICE,  
STATE OF HAWAII, 1955-2000



**Papayas: Acreage, utilization, farm price and value, State of Hawaii, 1946-2001**

Year	Farms	Production area	Utilization			Farm Price			Value of sales
			Processed	Fresh Mkt	All	Processed	Fresh Mkt	All	
		<i>Acres</i>	<i>1,000 pounds</i>			<i>Cents per pound</i>			<i>\$1,000</i>
1946		360			7,565			3.2	241
1947		330			5,525			5.4	296
1948		400			7,100			4.3	303
1949		360			5,885			6.0	351
1950		460			6,450			4.2	270
1951		370			5,740			4.8	273
1952		320			7,005			5.7	397
1953		410			9,155			4.7	431
1954		470			10,785			5.2	556
1955		410	1,259	8,076	9,335	2.0	7.1	6.4	601
1956		430	1,746	8,989	10,735	2.1	7.0	6.2	661
1957		540	1,081	13,247	14,328	3.1	5.1	5.0	714
1958	226	610	1,300	13,682	14,982	2.3	5.6	5.3	797
1959	189	570	1,715	12,525	14,243	2.2	5.4	5.0	714
1960	176	500	1,815	10,130	11,945	2.4	6.7	6.0	719
1961	185	570	1,538	13,956	15,494	2.5	5.8	5.5	849
1962	161	540	738	13,472	14,210	2.5	6.0	5.8	826
1963	181	460	2,350	11,725	14,075	6.0	7.8	7.5	1,053
1964	197	750	4,266	17,614	21,880	5.8	4.5	4.7	1,032
1965	200	790	3,237	14,698	17,935	5.3	6.7	6.2	1,120
1966	139	600	3,455	15,225	18,680	3.7	7.9	7.1	1,334
1967	125	760	3,452	19,394	22,846	4.2	8.0	7.4	1,691
1968	120	830	3,465	20,085	23,550	3.9	10.6	9.6	2,260
1969	132	850	2,898	16,337	19,235	3.6	14.0	12.4	2,385
1970	139	1,040	1,022	23,938	24,960	3.9	10.0	9.8	2,436
1971	153	970	1,553	19,172	20,725	3.3	14.0	13.2	2,736
1972	179	985	3,776	21,959	25,735	2.9	15.1	13.3	3,423
1973	176	1,430	3,976	28,848	32,824	3.5	14.0	12.7	4,180
1974	181	1,690	2,695	34,529	37,224	3.1	13.9	13.1	4,871
1975	173	1,840	4,944	34,952	39,896	3.0	15.8	14.2	5,668
1976	178	1,930	6,449	43,588	50,037	3.8	13.5	12.3	6,134
1977	186	2,155	9,561	53,987	63,548	4.7	13.2	11.9	7,565
1978	183	2,190	9,376	54,624	64,000	4.6	14.4	13.0	8,304
1979	194	2,210	4,569	36,446	41,015	4.0	25.6	23.2	9,515

Continued on page 5

**Papayas: Acreage, utilization, farm price and value, State of Hawaii, 1946-2001 – Continued**

Year	Farms	Production area	Utilization			Farm Price			Value of sales
			Processed	Fresh Mkt	All	Processed	Fresh Mkt	All	
		<i>Acres</i>	<i>1,000 pounds</i>			<i>Cents per pound</i>			<i>\$1,000</i>
1980	197	1,950	3,556	45,360	48,916	3.4	21.7	20.4	9,964
1981	211	2,110	8,220	58,170	66,390	3.1	20.9	18.7	12,413
1982	214	2,170	7,980	44,770	52,750	3.1	25.1	21.8	11,484
1983	227	2,120	15,100	46,300	61,400	4.4	23.6	18.9	11,591
1984	306	2,590	13,500	67,000	80,500	3.1	13.1	11.4	9,196
1985	315	2,650	11,150	49,250	60,400	2.3	16.9	14.2	8,579
1986	311	2,355	10,900	50,100	61,000	2.3	21.7	18.2	11,123
1987	293	2,350	11,000	56,000	67,000	2.2	19.3	16.5	11,050
1988	305	2,300	12,000	57,000	69,000	3.2	21.0	17.9	12,354
1989	325	2,500	10,000	64,000	74,000	3.0	22.0	19.4	14,380
1990	311	2,400	10,500	58,000	68,500	2.9	25.0	21.6	14,805
1991	271	2,025	7,200	48,150	55,350	2.7	33.3	29.3	16,228
1992	259	2,415	15,500	55,800	71,300	3.0	25.0	20.2	14,415
1993	256	2,555	5,500	58,200	63,700	3.1	23.2	21.5	13,673
1994	256	2,200	5,800	56,200	62,000	3.0	24.3	22.3	13,831
1995	244	2,435	8,900	41,900	50,800	3.0	43.5	36.4	18,494
1996	281	1,835	4,000	37,800	41,800	3.0	44.8	40.8	17,054
1997	241	1,985	3,100	35,700	38,800	3.0	52.9	48.9	18,978
1998	262	2,120	4,300	35,600	39,900	3.0	35.0	31.6	12,589
1999	222	1,940	3,000	39,400	42,400	3.0	40.2	37.6	15,929
2000	236	1,650	4,250	50,250	54,500	3.0	31.6	29.4	16,007
2001	221	1,950	3,000	52,000	55,000	3.0	27.9	26.5	14,598

NA = Not available.

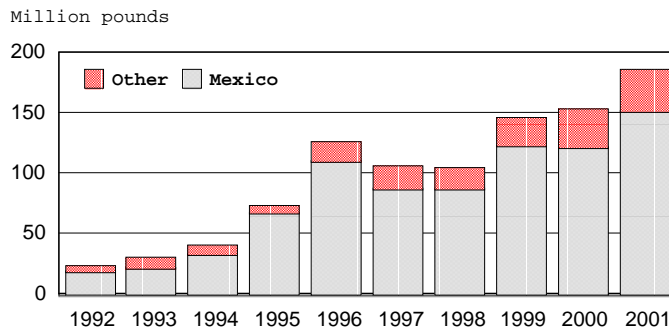
## U.S. Papaya Imports

U.S. imports of papaya totaled 198.2 million pounds in 2001, according to Department of Commerce data. Fresh fruit imports of 186.2 million pounds made up the bulk of papaya imports and accounted for 94 percent of the total.

After steadily climbing to 126.1 million pounds in 1996, fresh papaya imports took a dip the following two years before resuming its upward trend. Fresh imports in 2001 were 21 percent more than 2000.

The top three sources of fresh papaya imports were Mexico, Belize, and Brazil. Mexico accounted for 82 percent of fresh papaya imports in 2001, with 151.9 million pounds. While Mexico maintained the lions share of fresh papaya imports, its position remained off its high of 92 percent in 1995. Imports of fresh papaya from Belize and Brazil increased 5 percent and 9 percent, respectively.

## U.S. FRESH PAPAYA IMPORTS, 1992-2001



## U.S. Imports of fresh papaya, by country, 1997-2001

Country	1997	1998	1999	2000	2001
<i>Million pounds</i>					
Mexico	88.2	87.4	123.3	121.5	151.9
Belize	8.0	9.4	8.5	12.3	12.9
Brazil	*	1.1	6.2	10.3	11.2
Jamaica	4.6	4.6	4.2	3.4	3.5
Dominican Republic	2.1	1.1	2.6	5.6	6.3
Other	3.4	2.0	1.8	1.0	.4
<b>Total</b>	<b>106.3</b>	<b>105.6</b>	<b>146.6</b>	<b>154.1</b>	<b>186.2</b>

\* = Less than 100,000 pounds.

## U.S. Imports of papaya, by type, 1997-2001

Product	1997	1998	1999	2000	2001
<i>Million pounds</i>					
Fresh	106.3	105.6	146.6	154.1	186.2
Frozen	1.2	1.0	1.0	1.5	1.2
Dried	1.3	1.8	2.2	2.1	3.2
Paste & Puree	.4	.3	.9	.6	.8
Pulp	.5	.6	.2	.4	.5
Other	6.2	6.6	6.2	5.8	6.4
<b>Total<sup>1</sup></b>	<b>115.9</b>	<b>115.9</b>	<b>157.0</b>	<b>164.4</b>	<b>198.3</b>

<sup>1</sup> Sum of products may not add to total due to rounding.

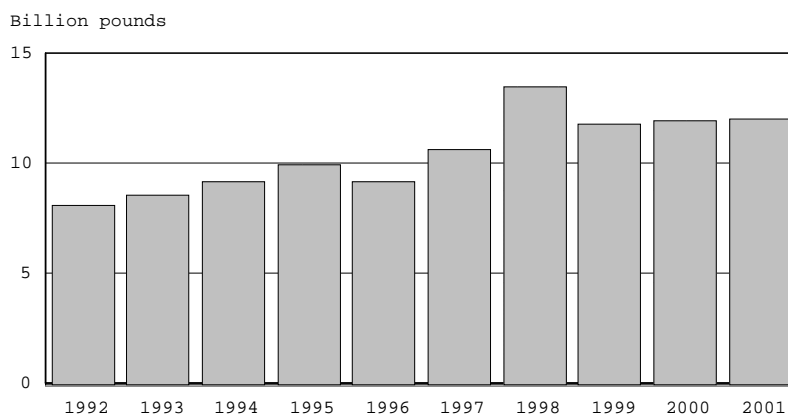
Source: U.S. Department of Commerce, Bureau of the Census.

## World Papaya Production

World papaya production for 2001 is estimated at 12.0 billion pounds, according to the Food and Agriculture Organization.

Brazil was the largest producer and its estimated 2001 production of 3.2 billion pounds accounted for 27 percent of the world's output. Nigeria was the second largest producer with an estimated 1.6 billion pounds followed by India with 1.4 billion pounds.

WORLD PAPAYA PRODUCTION, 1992-2001



World papaya production, by country, 1997-2001

Country	1997	1998	1999	2000	2001
	<i>Million pounds</i>				
Brazil	2,869	3,038	3,091	3,174	3,197
India	1,213	3,488	1,420	1,420	1,420
Indonesia	795	1,080	992	946	1,036
Mexico	1,310	1,269	1,255	1,482	1,351
Nigeria	1,488	1,656	1,649	1,649	1,649
Thailand	254	260	262	262	262
USA	39	40	42	55	55
Other	2,650	2,676	3,078	3,009	3,031
Total <sup>1</sup>	10,618	13,507	11,789	11,997	12,001

Source: Food and Agriculture Organization (FAO).