

HAWAII PAPAYAS



National Agricultural Statistics Service

Hawaii Agricultural Statistics Service
 Hawaii Department of Agriculture
 1428 S King Street, Honolulu, HI 96814-2512
 (808) 973-9588
 FAX (808) 973-2909
 Internet Web Site <http://www.nass.usda.gov/hi>

Frequency: Monthly
 Release: July 12, 2003

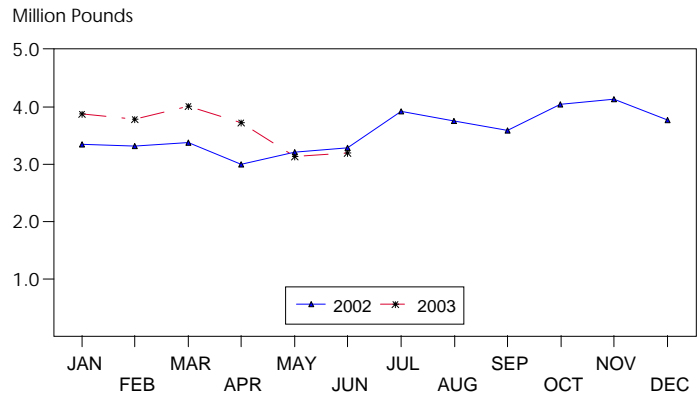
JUNE FRESH UTILIZATION UP 2 PERCENT

Hawaii fresh papaya utilization is estimated at 3.2 million pounds for June 2003, up 2 percent from last month, but 3 percent lower than June 2002.

Area in crop totaled 2,175 acres, 4 percent lower from March 2003, and 1 percent less than June 2002. Harvested acres totaled 1,575 acres, 9 percent lower from both March 2003 and June 2002.

Weather conditions were variable during June. The last week of May and the beginning of June were relatively dry over rainfall dependent orchards. Light showers during the second half of June helped to relieve moisture stress.

FRESH PAPAYA UTILIZATION STATE OF HAWAII, 2002-2003¹



¹ 2003 Preliminary.

HASS

Papaya growers are expected to receive an estimated 38.0 cents per pound for fresh fruit in June. This is unchanged from last month, but 5 percent (2.0 cents) lower than the previous year.

FRESH PAPAYA UTILIZATION, STATE OF HAWAII, MONTH OF: June 2003

Island	Sales				Year ago	Year-to-date	
	Local ¹	Intrastate	Out-of-State	Total fresh		2002	2003
	<i>1,000 pounds</i>						
Hawaii.....	139	1,186	1,450	2,775	2,615	15,560	19,185
Kauai.....	45	0	5	50	105	640	310
Maui/Molokai/Oahu ²	340	10	20	370	565	3,320	2,205
State.....	524	1,196	1,475	3,195	3,285	19,520	21,700

¹ On island of production.

² Combined to avoid disclosure of individual operations.

DONALD A. MARTIN
 State Agricultural Statistician

ARTHUR Y. OSAKI
 Research Statistician

STEVE P. GUNN
 Deputy State Statistician

SANDY K. NAKASONE
 Statistical Assistant

PAPAYA ACREAGE, STATE OF HAWAII, 2003 WITH COMPARISONS

Island	Total acreage in crop							
	March		June		September		December	
	2002	2003	2002	2003	2002	2003	2002	2003
Hawaii.....	2,200	2,015	1,920	1,925	1,925		1,925	
Kauai.....	80	55	75	65	60		55	
Maui/Molokai/Oahu.....	210	185	210	185	185		170	
State.....	2,490	2,255	2,205	2,175	2,170		2,150	
	Total bearing acres							
Hawaii.....	1,700	1,600	1,490	1,440	1,385		1,465	
Kauai.....	60	40	60	40	40		35	
Maui/Molokai/Oahu.....	170	95	175	95	75		80	
State.....	1,930	1,735	1,725	1,575	1,500		1,580	

FRESH PAPAYA FARM PRICE, STATE OF HAWAII, 2002-2003

Year	Jan.	Feb.	Mar.	Apr.	May	June	July	Aug.	Sep.	Oct.	Nov.	Dec.	Average
	<i>Cents per pound</i>												
2002 ¹	34.0	35.0	34.0	38.0	42.0	40.0	35.0	34.0	30.0	27.0	26.0	26.0	
2003 ¹	28.0	32.0	35.0	36.0	38.0	38.0							

¹Preliminary.