

HAWAII PAPAYAS



National Agricultural Statistics Service

Hawaii Agricultural Statistics
Hawaii Department of Agriculture
1428 S King Street, Honolulu, HI 96814-2512
(808) 973-9588
FAX (808) 973-2909
Internet Web Site <http://www.nass.usda.gov/hi>

Frequency: Monthly
Release: July 12, 2004

JUNE FRESH UTILIZATION UP 13 PERCENT FROM LAST MONTH

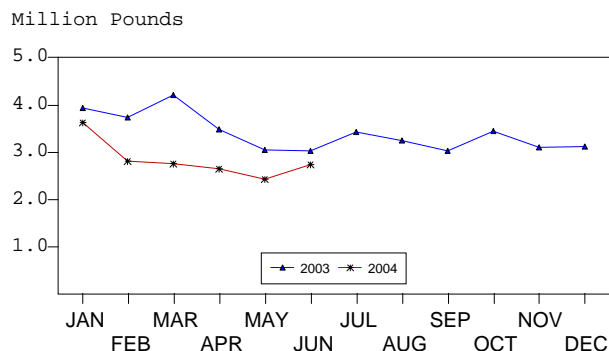
Hawaii fresh papaya utilization is estimated at 2.75 million pounds for June, 13 percent higher than last month but 9 percent lower than a year ago. Year-to-date fresh sales were 21 percent lower than the same 6-month period of 2003.

Area in crop totaled 2,000 acres, down 5 percent from March, and 8 percent less than a year ago. Harvested area totaled 1,055 acres, 9 percent less than March, and 33 percent below June 2003.

Weather conditions over the major producing areas were mostly favorable during June. Mostly sunny skies and periods of light trade wind showers provided fair to good growing conditions.

Papaya growers are expected to receive an estimated 37.0 cents per pound for fresh fruit in June, 30 percent (16.0 cents) lower than last month, but 6 percent (2.0 cents) higher than a year ago.

FRESH PAPAYA UTILIZATION STATE OF HAWAII, 2003-2004¹



¹ 2004 Preliminary.

HASS

FRESH PAPAYA UTILIZATION, STATE OF HAWAII, MONTH OF: June 2004

Island	Sales				Year ago	Year-to-date	
	Local ¹	Intrastate	Out-of-State	Total fresh		2003	2004
	<i>1,000 pounds</i>						
Hawaii.....	107	1,323	1,000	2,430	2,620	18,935	15,070
Kauai.....	40	5	0	45	40	300	255
Maui/Molokai/Oahu ²	211	19	40	270	370	2,205	1,695
State.....	358	1,347	1,040	2,745	3,030	21,440	17,020

¹ On island of production.

² Combined to avoid disclosure of individual operations.

DONALD A. MARTIN
Director

ARTHUR Y. OSAKI
Research Statistician

SANDY K. NAKASONE
Statistical Assistant

PAPAYA ACREAGE, STATE OF HAWAII, 2004 WITH COMPARISONS

Island	Total acreage in crop							
	March		June		September		December	
	2003	2004	2003	2004	2003	2004	2003	2004
Hawaii.....	2,005	1,900	1,915	1,800	2,155		1,990	
Kauai.....	60	50	65	40	45		50	
Maui/Molokai/Oahu.....	195	160	190	160	170		170	
State.....	2,260	2,110	2,170	2,000	2,370		2,210	
	Total bearing acres							
Hawaii.....	1,375	1,000	1,430	900	1,420		1,195	
Kauai.....	40	40	40	30	30		35	
Maui/Molokai/Oahu.....	100	125	105	125	115		120	
State.....	1,515	1,165	1,575	1,055	1,565		1,350	

FRESH PAPAYA FARM PRICE, STATE OF HAWAII, 2003-2004

Year	Jan.	Feb.	Mar.	Apr.	May	June	July	Aug.	Sep.	Oct.	Nov.	Dec.	Average
	<i>Cents per pound</i>												
2003	30.7	32.6	32.8	34.1	33.8	35.0	31.8	30.1	31.1	31.6	29.6	30.8	32.0
2004 ¹	30.0	31.0	39.0	45.0	53.0	37.0							

¹Preliminary.