

HAWAII PAPAYAS



Frequency: Monthly
Release: July 13, 2005

USDA, NASS, Hawaii Field Office
Hawaii Department of Agriculture
1428 S. King Street, Honolulu, HI 96814-2512
(808) 973-9588
FAX (808) 973-2909
Internet Web Site <http://www.nass.usda.gov/hi>

JUNE FRESH UTILIZATION FORECAST 13 PERCENT BELOW YEAR AGO

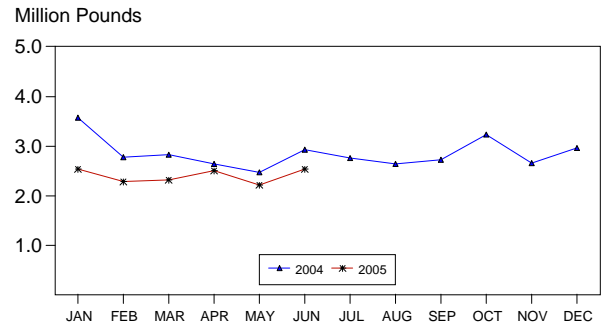
Hawaii fresh papaya utilization is estimated at 2.54 million pounds for June 2005, 14 percent higher than last month, but 13 percent lower than a year ago. Year-to-date fresh sales were 16 percent below the same 6-month period of 2004.

Area in crop totaled 2,600 acres in June, up 4 percent from March and 30 percent higher than June 2004. Harvested area totaled 1,580 acres, 10 percent more than March and a 50 percent increase from a year ago.

June's weather conditions were favorable for papaya trees with daily showers and sunny periods. Younger plantings made good progress.

Papaya growers are expected to receive an estimated 37.0 cents per pound for fresh fruit in June, down 16 percent (7.0 cents) from last month and 6 percent (2.5 cents) less than June 2004.

FRESH PAPAYA UTILIZATION STATE OF HAWAII, 2004-2005¹



¹ 2005 Preliminary.

USDA,NASS

FRESH PAPAYA UTILIZATION, STATE OF HAWAII, MONTH OF: June 2005

Island	Sales				Year ago	Year-to-date	
	Local ¹	Intrastate	Out-of-State	Total fresh		2004	2005
	<i>1,000 pounds</i>						
Hawaii.....	103	1,097	1,000	2,200	2,585	15,135	12,555
Kauai.....	43	2	0	45	45	255	225
Maui/Molokai/Oahu ²	214	6	70	290	290	1,770	1,605
State.....	360	1,105	1,070	2,535	2,920	17,160	14,385

¹ On island of production.

² Combined to avoid disclosure of individual operations.

MARK E. HUDSON
Director

STEVE P. GUNN
Deputy Director

REGINA W. HIDANO
Agricultural Statistician

SANDY K. NAKASONE
Statistical Assistant

PAPAYA ACREAGE, STATE OF HAWAII, 2005 WITH COMPARISONS

Island	Total acreage in crop							
	March		June		September		December	
	2004	2005	2004	2005	2004	2005	2004	2005
Hawaii.....	1,900	2,265	1,800	2,355	1,920		2,050	
Kauai.....	50	35	40	40	40		40	
Maui/Molokai/Oahu.....	160	190	160	205	150		140	
State.....	2,110	2,490	2,000	2,600	2,110		2,230	
	Total bearing acres							
Hawaii.....	1,000	1,270	900	1,405	1,220		1,245	
Kauai.....	35	25	30	30	25		25	
Maui/Molokai/Oahu.....	125	140	125	145	125		130	
State.....	1,160	1,435	1,055	1,580	1,370		1,400	

FRESH PAPAYA FARM PRICE, STATE OF HAWAII, 2004-2005

Year	Jan.	Feb.	Mar.	Apr.	May	June	July	Aug.	Sep.	Oct.	Nov.	Dec.	Average
	<i>Cents per pound</i>												
2004	31.0	31.2	37.4	40.0	41.0	39.5	37.2	36.6	37.2	35.8	34.3	33.4	36.1
2005 ¹	31.0	37.0	40.0	42.0	44.0	37.0							

¹ Preliminary.