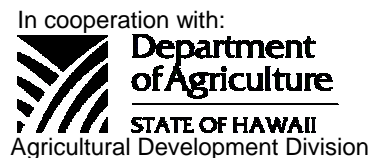




National Agricultural Statistics Service  
 USDA, Hawaii Field Office  
 1428 S. King Street  
 Honolulu, HI 96814-2512  
 Telephone: (808) 973-9588  
 FAX: (808) 973-2909  
 Internet Web Site <http://www.nass.usda.gov/hi>

# HAWAII PAPAYAS



Frequency: Monthly

Release: July 13, 2006

## OUTPUT LOWER FOR JUNE AND FIRST HALF OF 2006

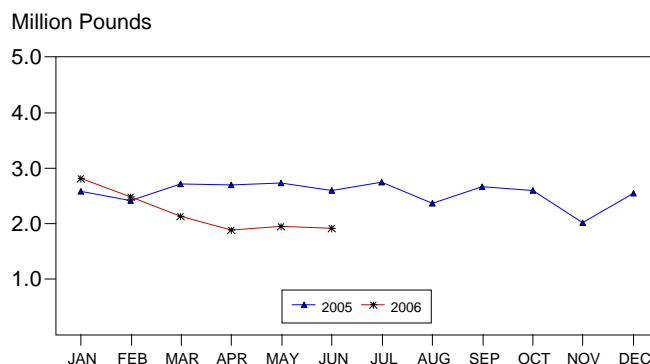
Hawaii fresh papaya utilization is estimated at 1.92 million pounds for June 2006, down 2 percent from last month and 26 percent below a year ago. Output for the first half of 2006 was down 16 percent to 13.2 million pounds.

Total in crop acreage for June is estimated at 1,745, dropping 15 percent from March and 33 percent less than June a year ago. Harvested area totaled 1,510 acres, 15 percent lower than March and 4 percent under June 2005.

In June, orchards received warm & sunny conditions favorable for fruit development and orchard maintenance. Young plantings made good progress. Harvesting was active. Growers continued to cut down diseased trees caused by the earlier rainy weather, thus reducing acreage.

Papaya growers are expected to receive an estimated 51.0 cents per pound for fresh fruit in June, 12 percent (7.0 cents) less than last month, but up 37 percent (13.8 cents) from June 2005.

## PAPAYA: Fresh Utilization, State of Hawaii, 2005-2006 <sup>1</sup>



<sup>1</sup> 2006 Preliminary.

USDA, NASS, Hawaii Field Office

## FRESH PAPAYA UTILIZATION, STATE OF HAWAII, MONTH OF: June 2006

County	Sales				Year ago	Year-to-date	
	Local <sup>1</sup>	Intrastate	Out-of-State	Total fresh		2005	2006
	<i>1,000 pounds</i>						
Hawaii.....	100	930	700	1,730	2,245	13,885	11,895
Honolulu/Kauai/Maui <sup>2</sup> .....	111	9	70	190	350	1,870	1,310
State .....	211	939	770	1,920	2,595	15,755	13,205

<sup>1</sup> On island of production.

<sup>2</sup> Kauai and Maui combined with Honolulu to avoid disclosure of individual operations.

**PAPAYA ACREAGE, STATE OF HAWAII, 2005 WITH COMPARISONS**

County	Total acreage in crop							
	March		June		September		December	
	2005	2006	2005	2006	2005	2006	2,005	2006
Hawaii.....	2,265	1,850	2,355	1,575	2,100		2,070	
Honolulu/Kauai/Maui <sup>1</sup> .....	225	210	245	170	230		220	
<b>State.....</b>	<b>2,490</b>	<b>2,060</b>	<b>2,600</b>	<b>1,745</b>	<b>2,330</b>		<b>2,290</b>	
	Total bearing acres							
Hawaii.....	1,270	1,620	1,405	1,385	1,265		1,630	
Honolulu/Kauai/Maui <sup>1</sup> .....	165	155	175	125	180		150	
<b>State.....</b>	<b>1,435</b>	<b>1,775</b>	<b>1,580</b>	<b>1,510</b>	<b>1,445</b>		<b>1,780</b>	

<sup>1</sup> Kauai and Maui combined with Honolulu to avoid disclosure of individual operations.

**FRESH PAPAYA FARM PRICE, STATE OF HAWAII, 2005-2006**

Year	Jan.	Feb.	Mar.	Apr.	May	June	July	Aug.	Sep.	Oct.	Nov.	Dec.	Average
	<i>Cents per pound</i>												
2005	33.0	37.4	40.0	37.6	37.0	37.2	36.2	36.5	34.3	33.2	37.1	36.9	36.4
2006 <sup>1</sup>	34.0	36.0	45.0	49.0	58.0	51.0							

<sup>1</sup> Preliminary.

MARK E. HUDSON  
Director

STEVE P. GUNN  
Deputy Director

REGINA W. HIDANO  
Agricultural Statistician

SANDY K. NAKASONE  
Statistical Assistant

Contributions by:

NAOMI LANDGRAF  
Maui County

ROBERT MIYAKE & DAVID MATTICE  
Hawaii County

JUNE OKAMURA & JOSEFINA RASAY  
Honolulu County

JUNE OKAMURA  
Kauai County