

# HAWAII PAPAYAS



National Agricultural Statistics Service

Hawaii Agricultural Statistics Service  
Hawaii Department of Agriculture  
1428 S King Street, Honolulu, HI 96814-2512  
(808) 973-9588  
FAX (808) 973-2909  
Internet Web Site <http://www.nass.usda.gov/hi>

Frequency: Monthly  
Release: August 14, 2002

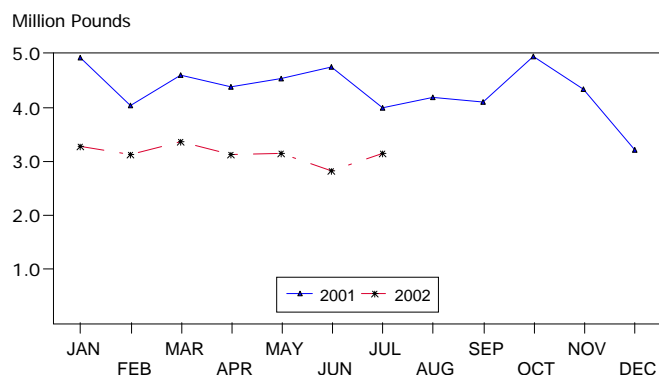
## FRESH PAPAYA UTILIZATION UP 11 PERCENT

Hawaii fresh papaya utilization is estimated at 3.14 million pounds for July 2002, 11 percent higher than last month, but 21 percent lower than a year ago.

Weather conditions in July were variable with scattered showers and sunshine over major papaya producing areas. Non-irrigated orchards have adequate soil moisture.

Papaya growers are expected to receive an estimated 35.0 cents per pound for fresh fruit in July, 13 percent (5.0 cents) lower than last month, but 17 percent (5.0 cents) higher than a year ago.

FRESH PAPAYA UTILIZATION  
STATE OF HAWAII, 2001-2002<sup>1</sup>



<sup>1</sup> 2002 Preliminary.

HASS

## FRESH PAPAYA UTILIZATION, STATE OF HAWAII, MONTH OF: July 2002

Island	Sales				Year ago	Year-to-date	
	Local <sup>1</sup>	Intrastate	Out-of-State	Total fresh		2001	2002
	<i>1,000 pounds</i>						
Hawaii.....	112	1,008	1,350	2,470	2,885	23,355	17,395
Kauai.....	55	40	10	105	130	1,185	745
Maui/Molokai/Oahu <sup>2</sup> .....	544	1	20	565	970	6,670	3,880
State.....	711	1,049	1,380	3,140	3,985	31,210	22,020

<sup>1</sup> On island of production.

<sup>2</sup> Combined to avoid disclosure of individual operations.

DONALD A. MARTIN  
State Agricultural Statistician

ARTHUR Y. OSAKI  
Research Statistician

SANDY K. NAKASONE  
Statistical Assistant

**PAPAYA ACREAGE, STATE OF HAWAII, 2002 WITH COMPARISONS**

Island	Total acreage in crop							
	March		June		September		December	
	2001	2002	2001	2002	2001	2002	2001	2002
Hawaii.....	2,270	2,200	3,000	1,920	2,360			2,275
Kauai.....	120	75	105	75	75			80
Maui/Molokai/Oahu.....	470	210	430	210	255			220
State.....	2,860	2,485	3,535	2,205	2,690			2,575
	Total bearing acres							
Hawaii.....	1,660	1,700	1,670	1,490	1,675			1,620
Kauai.....	85	60	80	60	55			60
Maui/Molokai/Oahu.....	280	175	285	180	210			145
State.....	2,025	1,935	2,035	1,730	1,940			1,825

**FRESH PAPAYA FARM PRICE, STATE OF HAWAII, 2001-2002**

Year	Jan.	Feb.	Mar.	Apr.	May	June	July	Aug.	Sep.	Oct.	Nov.	Dec.	Average
	<i>Cents per pound</i>												
2001	23.8	26.9	30.0	31.7	28.3	28.5	30.0	27.7	27.3	26.0	26.5	28.9	27.9
2002 <sup>1</sup>	34.0	35.0	34.0	38.0	42.0	40.0	35.0						

<sup>1</sup>Preliminary.