

# HAWAII PAPAYAS



USDA, NASS, Hawaii Field Office

Hawaii Department of Agriculture  
1428 S. King Street  
Honolulu, HI 96814-2512  
(808) 973-9588  
FAX (808) 973-2909  
Internet Web Site <http://www.nass.usda.gov/hi>

Frequency: Monthly  
Release: August 24, 2005

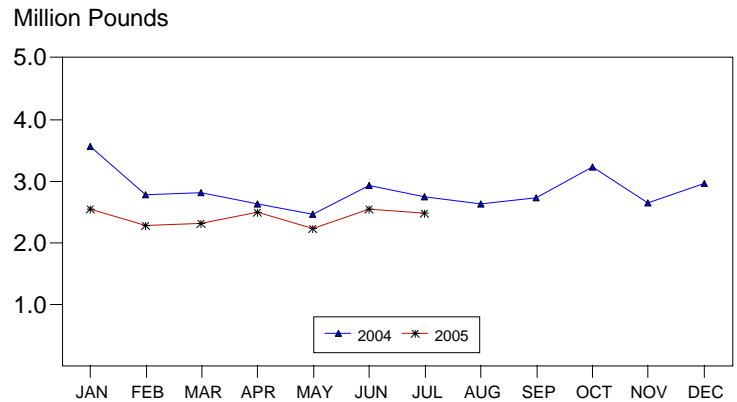
## JULY FRESH SALES LOWER

Hawaii fresh papaya utilization is estimated at 2.48 million pounds for July 2005, down 2 percent from last month and 10 percent less than a year ago. Cumulative fresh sales for 2005 continued to trail 2004 with a 15 percent decline from the comparable period last year.

In July, adequate soil moisture and sunny periods were beneficial for orchards. Young plantings are making good progress. Active harvesting is underway.

Papaya growers are expected to receive an estimated 37.0 cents per pound for fresh fruit in July, unchanged from last month, but 1 percent (0.2 cent) below a year ago.

## FRESH PAPAYA UTILIZATION STATE OF HAWAII, 2004-2005<sup>1</sup>



<sup>1</sup> 2005 Preliminary.

USDA, NASS

## FRESH PAPAYA UTILIZATION, STATE OF HAWAII, MONTH OF: July 2005

Island	Sales				Year ago	Year-to-date	
	Local <sup>1</sup>	Intrastate	Out-of-State	Total fresh		2004	2005
	<i>1,000 pounds</i>						
Hawaii.....	101	1,069	940	2,110	2,410	17,545	14,665
Kauai.....	48	2	0	50	50	305	275
Maui/Molokai/Oahu <sup>2</sup> .....	243	7	70	320	290	2,060	1,925
State.....	392	1,078	1,010	2,480	2,750	19,910	16,865

<sup>1</sup> On island of production.

<sup>2</sup> Combined to avoid disclosure of individual operations.

MARK E. HUDSON  
Director

STEVE P. GUNN  
Deputy Director

REGINA W. HIDANO  
Agricultural Statistician

SANDY K. NAKASONE  
Statistical Assistant

**PAPAYA ACREAGE, STATE OF HAWAII, 2005 WITH COMPARISONS**

Island	Total acreage in crop							
	March		June		September		December	
	2004	2005	2004	2005	2004	2005	2004	2005
Hawaii.....	1,900	2,265	1,800	2,355	1,920		2,050	
Kauai.....	50	35	40	40	40		40	
Maui/Molokai/Oahu.....	160	190	160	205	150		140	
State.....	2,110	2,490	2,000	2,600	2,110		2,230	

Total bearing acres								
Hawaii.....	1,000	1,270	900	1,405	1,220		1,245	
Kauai.....	35	25	30	30	25		25	
Maui/Molokai/Oahu.....	125	140	125	145	125		130	
State.....	1,160	1,435	1,055	1,580	1,370		1,400	

**FRESH PAPAYA FARM PRICE, STATE OF HAWAII, 2004-2005**

Year	Jan.	Feb.	Mar.	Apr.	May	June	July	Aug.	Sep.	Oct.	Nov.	Dec.	Average
	<i>Cents per pound</i>												
2004	31.0	31.2	37.4	40.0	41.0	39.5	37.2	36.6	37.2	35.8	34.3	33.4	36.1
2005 <sup>1</sup>	31.0	37.0	40.0	42.0	44.0	37.0	37.0						

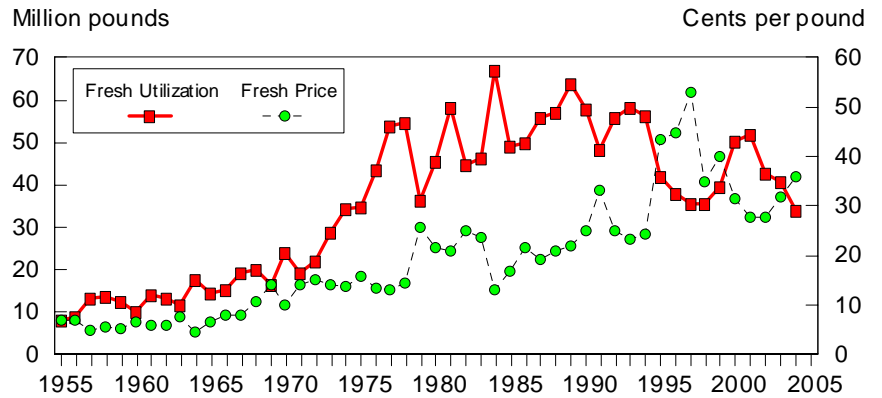
<sup>1</sup> Preliminary.

## 2004 Papaya Output Down, Price Up

Papaya output in 2004 totaled 35.8 million pounds, falling for the third consecutive year and down 16 percent from 2003. Smaller acreage for harvest and weather related problems contributed to the lower output. Dry weather during fall 2003 affected the upcoming February crop. In March, more rainfall left a carried over effect of disease incidences for the next several months. A short-lived barge strike in July brought delays and concerns for papayas entering the market.

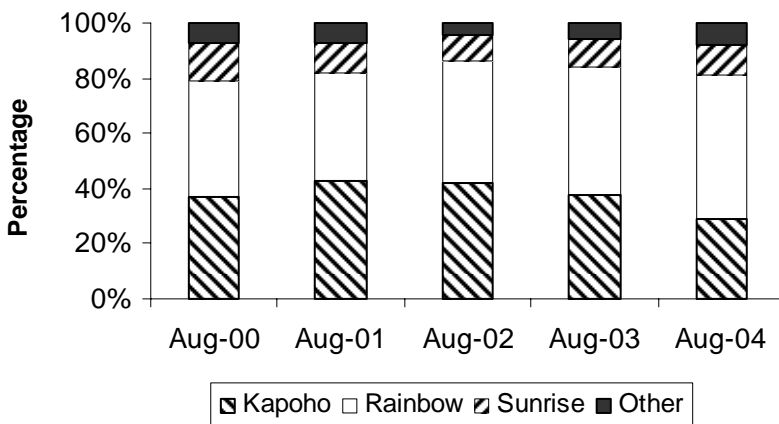
The biotechnology variety Rainbow made up 50 percent of bearing acres in 2004, compared to 44 percent in 2003. Rainbow is resistant to Papaya Ringspot Virus (PRV), a virus that devastated the Hawaii papaya industry from 1993 to 1999. The Kapoho variety was the standard for the papaya industry for many years, however, Kapoho is susceptible to PRV. Yields of Rainbow are high during the first year of harvest compared to the Kapoho variety. In the second year of harvest, yields for Rainbow are comparable to the Kapoho variety. Routine field inspections and rogueing of infected trees kept losses to PRV light. The Kapoho variety comprised 32 percent of harvested acreage as Japan, a major export market, does not accept the biotechnology variety Rainbow. Annual August surveys since year 2000 show Rainbow and Kapoho have been the major two varieties.

**FRESH PAPAYA UTILIZATION & PRICE, STATE OF HAWAII, 1955-2004**



USDA, NASS

**TOTAL ACREAGE BY VARIETY, 2000-2004**



USDA, NASS

The State's in crop papaya acreage totaled 2,105 down 6 percent from the previous year. Harvested acreage fell 21 percent from 2003 to 1,235 acres and the lowest level since 1972.

Number of farms in 2004 totaled 207, compared to 163 in 2003.

Fresh output from the Island of Hawaii represented 88 percent of the State's total in 2004. Over 90 percent of the State's papaya production came from the Island of Hawaii from 1986 through 1996.

Value of utilization (fresh and processed)

for 2004 was pegged at \$12.4 million, 5 percent below 2003 mainly due to lower output. However, papaya price of 34.5 cents per pound rose 12 percent from 2003 influenced by higher fresh fruit prices.

**Papayas: Acreage, utilization, farm price and value, State of Hawaii, 1946-2004**

Year	Farms	Production area	Utilization			Farm Price			Value of sales
			Processed	Fresh Mkt	All	Processed	Fresh Mkt	All	
		<i>Acres</i>	<i>----- 1,000 pounds -----</i>			<i>----- Cents per pound -----</i>			<i>\$1,000</i>
1946		360			7,565			3.2	241
1947		330			5,525			5.4	296
1948		400			7,100			4.3	303
1949		360			5,885			6.0	351
1950		460			6,450			4.2	270
1951		370			5,740			4.8	273
1952		320			7,005			5.7	397
1953		410			9,155			4.7	431
1954		470			10,785			5.2	556
1955		410	1,259	8,076	9,335	2.0	7.1	6.4	601
1956		430	1,746	8,989	10,735	2.1	7.0	6.2	661
1957		540	1,081	13,247	14,328	3.1	5.1	5.0	714
1958	226	610	1,300	13,682	14,982	2.3	5.6	5.3	797
1959	189	570	1,715	12,525	14,243	2.2	5.4	5.0	714
1960	176	500	1,815	10,130	11,945	2.4	6.7	6.0	719
1961	185	570	1,538	13,956	15,494	2.5	5.8	5.5	849
1962	161	540	738	13,472	14,210	2.5	6.0	5.8	826
1963	181	460	2,350	11,725	14,075	6.0	7.8	7.5	1,053
1964	197	750	4,266	17,614	21,880	5.8	4.5	4.7	1,032
1965	200	790	3,237	14,698	17,935	5.3	6.7	6.2	1,120
1966	139	600	3,455	15,225	18,680	3.7	7.9	7.1	1,334
1967	125	760	3,452	19,394	22,846	4.2	8.0	7.4	1,691
1968	120	830	3,465	20,085	23,550	3.9	10.6	9.6	2,260
1969	132	850	2,898	16,337	19,235	3.6	14.0	12.4	2,385
1970	139	1,040	1,022	23,938	24,960	3.9	10.0	9.8	2,436
1971	153	970	1,553	19,172	20,725	3.3	14.0	13.2	2,736
1972	179	985	3,776	21,959	25,735	2.9	15.1	13.3	3,423
1973	176	1,430	3,976	28,848	32,824	3.5	14.0	12.7	4,180
1974	181	1,690	2,695	34,529	37,224	3.1	13.9	13.1	4,871
1975	173	1,840	4,944	34,952	39,896	3.0	15.8	14.2	5,668
1976	178	1,930	6,449	43,588	50,037	3.8	13.5	12.3	6,134
1977	186	2,155	9,561	53,987	63,548	4.7	13.2	11.9	7,565
1978	183	2,190	9,376	54,624	64,000	4.6	14.4	13.0	8,304
1979	194	2,210	4,569	36,446	41,015	4.0	25.6	23.2	9,515

Continued on page 5

**Papayas: Acreage, utilization, farm price and value, State of Hawaii, 1946-2004 -- Continued**

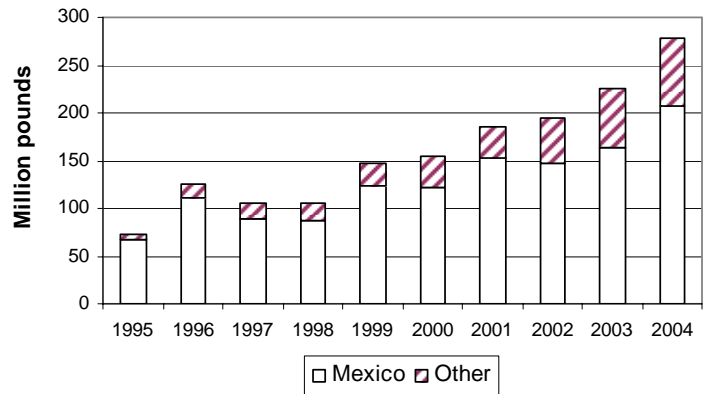
Year	Farms	Production area	Utilization			Farm Price			Value of sales
			Processed	Fresh Mkt	All	Processed	Fresh Mkt	All	
		<i>Acres</i>	<i>----- 1,000 pounds -----</i>			<i>----- Cents per pound -----</i>			<i>\$1,000</i>
1980	197	1,950	3,556	45,360	48,916	3.4	21.7	20.4	9,964
1981	211	2,110	8,220	58,170	66,390	3.1	20.9	18.7	12,413
1982	214	2,170	7,980	44,770	52,750	3.1	25.1	21.8	11,484
1983	227	2,120	15,100	46,300	61,400	4.4	23.6	18.9	11,591
1984	306	2,590	13,500	67,000	80,500	3.1	13.1	11.4	9,196
1985	315	2,650	11,150	49,250	60,400	2.3	16.9	14.2	8,579
1986	311	2,355	10,900	50,100	61,000	2.3	21.7	18.2	11,123
1987	293	2,350	11,000	56,000	67,000	2.2	19.3	16.5	11,050
1988	305	2,300	12,000	57,000	69,000	3.2	21.0	17.9	12,354
1989	325	2,500	10,000	64,000	74,000	3.0	22.0	19.4	14,380
1990	311	2,400	10,500	58,000	68,500	2.9	25.0	21.6	14,805
1991	271	2,025	7,200	48,150	55,350	2.7	33.3	29.3	16,228
1992	259	2,415	15,500	55,800	71,300	3.0	25.0	20.2	14,415
1993	256	2,555	5,500	58,200	63,700	3.1	23.2	21.5	13,673
1994	256	2,200	5,800	56,200	62,000	3.0	24.3	22.3	13,831
1995	244	2,435	8,900	41,900	50,800	3.0	43.5	36.4	18,494
1996	281	1,835	4,000	37,800	41,800	3.0	44.8	40.8	17,054
1997	241	1,985	3,100	35,700	38,800	3.0	52.9	48.9	18,978
1998	262	2,120	4,300	35,600	39,900	3.0	35.0	31.6	12,589
1999	222	1,940	3,000	39,400	42,400	3.0	40.2	37.6	15,929
2000	236	1,650	4,250	50,250	54,500	3.0	31.6	29.4	16,007
2001	221	1,950	3,000	52,000	55,000	3.0	27.9	26.5	14,598
2002	164	1,720	3,200	42,700	45,900	3.0	27.7	26.0	11,924
2003	163	1,565	1,800	40,800	42,600	3.0	31.9	30.7	13,069
2004	207	1,235	1,700	34,100	35,800	3.0	36.1	34.5	12,361

## U.S. Papaya Imports Higher

Fresh papaya imports from foreign sources into the United States totaled 277.8 million pounds in 2004, up 24 percent from the previous year, according to the Department of Commerce. About three quarters of the fresh imports came from Mexico with 207.7 million pounds. In the last five years, papayas from Belize have increased from 8 to 19 percent of the year's total.

Of the total imports by type, fresh papayas accounted for 95 percent. Imports for 2004 increased 22 percent from 2003 to 292.3 million pounds.

## U.S. FRESH PAPAYA IMPORTS, 1995-2004



Source: U.S. Department of Commerce. Bureau of the Census.

## U.S. Imports of fresh papaya, by country, 2000-2004

Country	2000	2001	2002	2003	2004
	<i>Million pounds</i>				
Mexico	121.5	151.9	147.6	164.5	207.7
Belize	12.3	12.9	24.3	34.7	53.4
Brazil	10.3	11.2	12.8	15.8	10.7
Jamaica	3.4	3.5	4.2	3.3	2.2
Dominican Republic	5.6	6.3	5.3	5.5	2.6
Other	1.0	.4	1.0	.8	1.2
Total	154.1	186.2	195.2	224.6	277.8

## U.S. Imports of papaya, by type, 2000-2004

Country	2000	2001	2002	2003	2004
	<i>Million pounds</i>				
Fresh	154.1	186.2	195.2	224.6	277.8
Frozen	1.5	1.2	1.5	1.5	2.1
Dried	2.1	3.2	3.5	4.9	3.9
Paste & Puree	.6	.8	.1	.1	.1
Pulp	.4	.5	.6	1.1	1.2
Other	5.8	6.4	7.0	7.4	7.1
Total <sup>1</sup>	164.4	198.3	207.9	239.6	292.3

<sup>1</sup> Total may not add to total due to rounding.

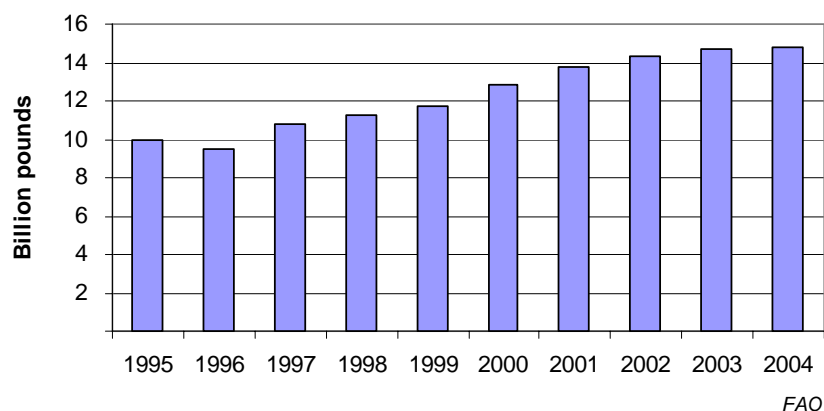
Source: U.S. Department of Commerce, Bureau of the Census.

## World Papaya Production Unchanged

In 2004, world papaya production remained nearly unchanged from a year ago with 14.79 billion pounds, according to the Food and Agriculture Organization.

Brazil remained the top producer of papayas growing 3.6 billion pounds followed by Mexico producing 2.1 billion pounds of the world's papaya total. Other contributing countries were Nigeria with 1.7 billion, India with 1.5 billion pounds, and Indonesia with 1.3 million pounds.

**WORLD PAPAYA PRODUCTION, 1995-2004**



**World papaya production, by country, 2000-2004**

Country	2000	2001	2002	2003	2004
	<i>Million pounds</i>				
Brazil	3,174	3,283	3,522	3,527	3,638
India	1,543	1,543	1,543	1,543	1,543
Indonesia	946	1,104	1,334	1,382	1,312
Mexico	1,482	1,926	1,932	2,107	2,107
Nigeria	1,649	1,649	1,664	1,664	1,664
Thailand	262	265	265	276	276
USA	55	55	46	43	36
Other	3,704	3,931	4,056	4,130	4,214
Total <sup>1</sup>	12,816	13,755	14,362	14,672	14,790

<sup>1</sup> Total may not add to total due to rounding.

Source: Food and Agriculture Organization (FAO), FAOSTAT data, 2005