



HAWAII PAPAYAS



National Agricultural Statistics Service
 USDA, Hawaii Field Office
 1428 S. King Street
 Honolulu, HI 96814-2512
 Telephone: (808) 973-9588
 FAX: (808) 973-2909
 Internet Web Site <http://www.nass.usda.gov/hi>

Frequency: Monthly

Release: August 28, 2006

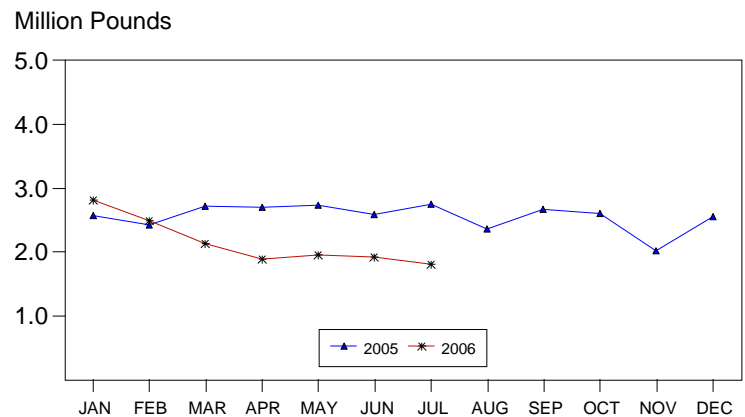
SMALLER OUTPUT CONTINUES IN JULY

Hawaii fresh papaya utilization is estimated at 1.81 million pounds for July 2006, 6 percent lower than last month and 34 percent below a year ago. Year-to-date sales totaled 15.0 million pounds, decreasing 19 percent from the same period last year.

Warm weather with light showers prevailed in July. The longer day length was beneficial for plantings. Irrigation was stepped up for drier areas. Newly planted orchards continued to make favorable progress. Active harvesting was underway.

Papaya growers are expected to receive an estimated 48.0 cents per pound for fresh fruit in July, 6 percent (3.0 cents) below last month, but 33 percent (11.8 cents) above a year ago. Monthly prices for 2006 have been mainly above 2005 levels.

**PAPAYA: Fresh Utilization,
State of Hawaii, 2005-2006¹**



¹ 2006 Preliminary.

FRESH PAPAYA UTILIZATION, STATE OF HAWAII, MONTH OF: July 2006

County	Sales				Year ago	Year-to-date	
	Local ¹	Intrastate	Out-of-State	Total fresh		2005	2006
	<i>1,000 pounds</i>						
Hawaii.....	86	844	700	1,630	2,365	16,250	13,525
Honolulu/Kauai/Maui ²	101	9	70	180	380	2,250	1,490
State.....	187	853	770	1,810	2,745	18,500	15,015

¹ On island of production.

² Kauai and Maui combined with Honolulu to avoid disclosure of individual operations.

PAPAYA ACREAGE, STATE OF HAWAII, 2006 WITH COMPARISONS

County	Total acreage in crop							
	March		June		September		December	
	2005	2006	2005	2006	2005	2006	2005	2006
Hawaii.....	2,265	1,850	2,355	1,575	2,100		2,070	
Honolulu/Kauai/Maui ¹	225	210	245	170	230		220	
State.....	2,490	2,060	2,600	1,745	2,330		2,290	
	Total bearing acres							
Hawaii.....	1,270	1,620	1,405	1,385	1,265		1,630	
Honolulu/Kauai/Maui ¹	165	155	175	125	180		150	
State.....	1,435	1,775	1,580	1,510	1,445		1,780	

¹ Kauai and Maui combined with Honolulu to avoid disclosure of individual operations.

FRESH PAPAYA FARM PRICE, STATE OF HAWAII, 2005-2006

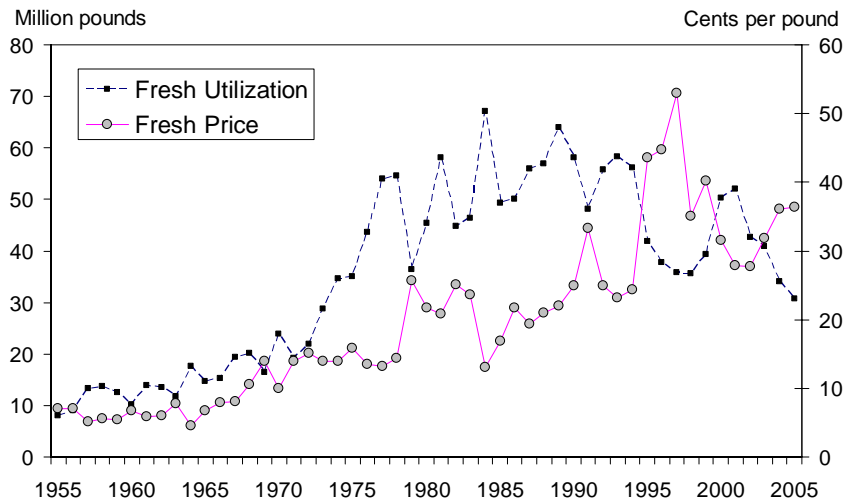
Year	Jan.	Feb.	Mar.	Apr.	May	June	July	Aug.	Sep.	Oct.	Nov.	Dec.	Average
	<i>Cents per pound</i>												
2005	33.0	37.4	40.0	37.6	37.0	37.2	36.2	36.5	34.3	33.2	37.1	36.9	36.4
2006 ¹	34.0	36.0	45.0	49.0	58.0	51.0	48.0						

¹ Preliminary.

2005 Papaya Output Lower

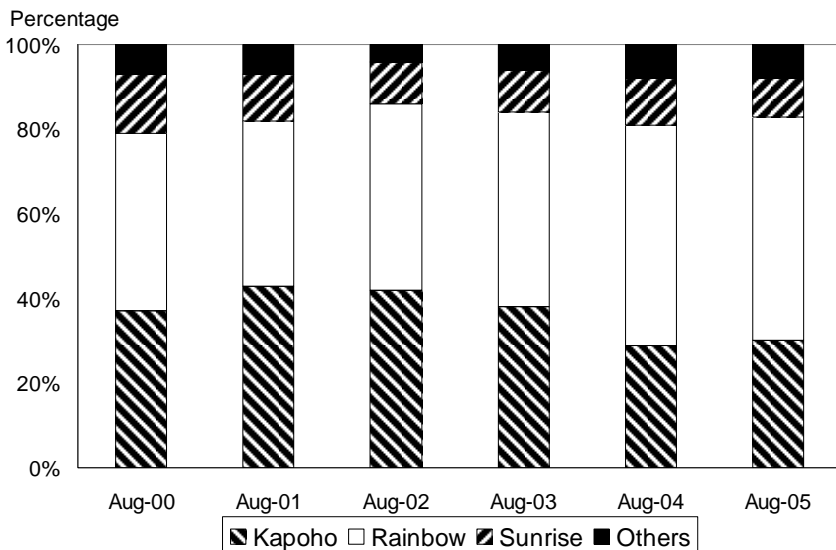
In 2005, papaya output totaled 32.9 million pounds, down 8 percent from 2004 and falling for the fourth consecutive year. Irregular rainfall and some disease problems contributed to lower yields and a smaller harvest. The biotechnology variety Rainbow made up 53 percent of total acres in 2005, up 1 percent from 2004. Rainbow is resistant to Papaya Ringspot Virus (PRV), a virus that devastated the Hawaii papaya industry from 1993 to 1999. The Kapoho variety was the standard for the papaya industry for many years; however, Kapoho is susceptible to PRV. Yields of Rainbow are higher during the first year of harvest compared to the Kapoho variety. In the second year of harvest, yields for Rainbow are comparable to the Kapoho variety. Routine field inspections and roguing of infected trees kept losses to PRV light. The Kapoho variety comprised 30 percent of total acreage compared to 29 percent the previous year.

FRESH PAPAYA UTILIZATION & PRICE, STATE OF HAWAII, 1955-2005



Annual August surveys since year 2000 show Rainbow and Kapoho have been the major two varieties.

TOTAL ACREAGE BY VARIETY, 2000-2005



The State's in crop papaya acreage totaled 2,395 up 14 percent from the previous year. Harvested acreage rose 20 percent from 2004 to 1,480 acres, rebounding after three years of decline.

Number of farms in 2005 totaled 205, slightly lower than 2004.

Hawaii county continues to lead with papaya production and accounting for 89 percent of the State's total in 2005.

Value of utilization (fresh and processed) for 2005 was pegged at \$11.2 million, 9 percent below 2004. Papaya price of 34.2 cents per pound was slightly down from last years 34.5 cents per pound.

Papayas: Acreage, utilization, farm price and value, State of Hawaii, 1946-2005

Year	Farms	Production area	Utilization			Farm Price			Value of sales
			Processed	Fresh Mkt	All	Processed	Fresh Mkt	All	
		<i>Acres</i>	<i>----- 1,000 pounds -----</i>			<i>----- Cents per pound -----</i>			<i>\$1,000</i>
1946		360			7,565			3.2	241
1947		330			5,525			5.4	296
1948		400			7,100			4.3	303
1949		360			5,885			6.0	351
1950		460			6,450			4.2	270
1951		370			5,740			4.8	273
1952		320			7,005			5.7	397
1953		410			9,155			4.7	431
1954		470			10,785			5.2	556
1955		410	1,259	8,076	9,335	2.0	7.1	6.4	601
1956		430	1,746	8,989	10,735	2.1	7.0	6.2	661
1957		540	1,081	13,247	14,328	3.1	5.1	5.0	714
1958	226	610	1,300	13,682	14,982	2.3	5.6	5.3	797
1959	189	570	1,715	12,528	14,243	2.2	5.4	5.0	714
1960	176	500	1,815	10,130	11,945	2.4	6.7	6.0	719
1961	185	570	1,538	13,956	15,494	2.5	5.8	5.5	849
1962	161	540	738	13,472	14,210	2.5	6.0	5.8	826
1963	181	460	2,350	11,725	14,075	6.0	7.8	7.5	1,053
1964	197	750	4,266	17,614	21,880	5.8	4.5	4.7	1,032
1965	200	790	3,237	14,698	17,935	4.1	6.5	6.0	1,084
1966	139	600	3,455	15,225	18,680	3.7	7.9	7.1	1,334
1967	125	760	3,452	19,394	22,846	4.2	8.0	7.4	1,691
1968	120	830	3,465	20,085	23,550	3.9	10.6	9.6	2,260
1969	132	850	2,898	16,337	19,235	3.6	14.0	12.4	2,385
1970	139	1,040	1,022	23,938	24,960	3.9	10.0	9.8	2,436
1971	153	970	1,553	19,172	20,725	3.3	14.0	13.2	2,736
1972	179	985	3,776	21,959	25,735	2.9	15.1	13.3	3,423
1973	176	1,430	3,976	28,848	32,824	3.5	14.0	12.7	4,180
1974	181	1,690	2,695	34,529	37,224	3.1	13.9	13.1	4,871
1975	173	1,840	4,944	34,952	39,896	3.0	15.8	14.2	5,668
1976	178	1,930	6,449	43,588	50,037	3.8	13.5	12.3	6,134
1977	186	2,155	9,561	53,987	63,548	4.7	13.2	11.9	7,565
1978	183	2,190	9,376	54,624	64,000	4.6	14.4	13.0	8,304
1979	194	2,210	4,569	36,446	41,015	4.0	25.6	23.2	9,515

Continued on page 5

Papayas: Acreage, utilization, farm price and value, State of Hawaii, 1946-2005 -- Continued

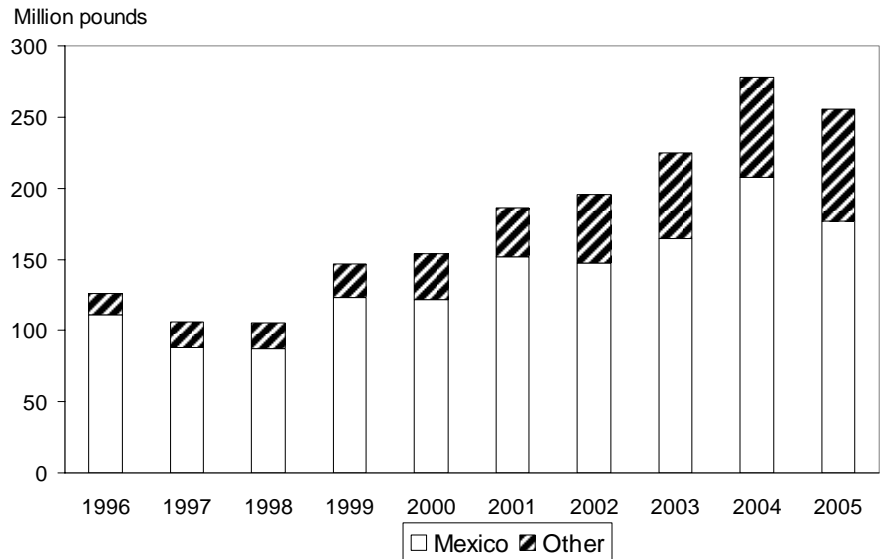
Year	Farms	Production area	Utilization			Farm Price			Value of sales
			Processed	Fresh Mkt	All	Processed	Fresh Mkt	All	
		<i>Acres</i>	<i>----- 1,000 pounds -----</i>			<i>----- Cents per pound -----</i>			<i>\$1,000</i>
1980	197	1,950	3,556	45,360	48,916	3.4	21.7	20.4	9,964
1981	211	2,110	8,220	58,170	66,390	3.1	20.9	18.7	12,413
1982	214	2,170	7,980	44,770	52,750	3.1	25.1	21.8	11,484
1983	227	2,120	15,100	46,300	61,400	4.4	23.6	18.9	11,591
1984	306	2,590	13,500	67,000	80,500	3.1	13.1	11.4	9,196
1985	315	2,650	11,150	49,250	60,400	2.3	16.9	14.2	8,579
1986	311	2,355	10,900	50,100	61,000	2.3	21.7	18.2	11,123
1987	293	2,350	11,000	56,000	67,000	2.2	19.3	16.5	11,050
1988	305	2,300	12,000	57,000	69,000	3.2	21.0	17.9	12,354
1989	325	2,500	10,000	64,000	74,000	3.0	22.0	19.4	14,380
1990	311	2,400	10,500	58,000	68,500	2.9	25.0	21.6	14,805
1991	271	2,025	7,200	48,150	55,350	2.7	33.3	29.3	16,228
1992	259	2,415	15,500	55,800	71,300	3.0	25.0	20.2	14,415
1993	256	2,555	5,500	58,200	63,700	3.1	23.2	21.5	13,673
1994	256	2,200	5,800	56,200	62,000	3.0	24.3	22.3	13,831
1995	244	2,435	8,900	41,900	50,800	3.0	43.5	36.4	18,494
1996	281	1,835	4,000	37,800	41,800	3.0	44.8	40.8	17,054
1997	241	1,985	3,100	35,700	38,800	3.0	52.9	48.9	18,978
1998	262	2,120	4,300	35,600	39,900	3.0	35.0	31.6	12,589
1999	222	1,940	3,000	39,400	42,400	3.0	40.2	37.6	15,929
2000	236	1,650	4,250	50,250	54,500	3.0	31.6	29.4	16,007
2001	221	1,950	3,000	52,000	55,000	3.0	27.9	26.5	14,598
2002	164	1,720	3,200	42,700	45,900	3.0	27.7	26.0	11,924
2003	163	1,565	1,800	40,800	42,600	3.0	31.9	30.7	13,069
2004	207	1,235	1,700	34,100	35,800	3.0	36.1	34.5	12,361
2005	205	1,480	2,200	30,700	32,900	3.0	36.4	34.2	11,241

U.S. Papaya Imports Lower

Fresh papaya imports from foreign sources into the United States totaled 255.9 million pounds in 2005, down 8 percent from the previous year, according to the Department of Commerce. Mexico accounted for 176.8 million pounds or 69 percent of the total. In the last five years, papayas from Belize have steadily increased and contributed almost a quarter of the total imports in 2005.

Total imports for 2005 decreased 7 percent from 2004 to 271.8 million pounds due to less fresh papayas. However, it still comprises the majority or 94 percent of total imports.

U.S. FRESH PAPAYA IMPORTS, 1996-2005



U.S. Imports of fresh papaya, by country, 2001-2005

Country	2001	2002	2003	2004	2005
<i>Million pounds</i>					
Mexico	151.9	147.6	164.5	207.7	176.8
Belize	12.9	24.3	34.7	53.4	61.1
Brazil	11.2	12.8	15.8	10.7	10.1
Jamaica	3.5	4.2	3.3	2.2	2.3
Dominican Republic	6.3	5.3	5.5	2.6	2.4
Guatemala	.3	.7	.8	.9	2.7
Other	.1	.3	*	.3	.5
Total	186.2	195.2	224.6	277.8	255.9

* = Less than 100,000 pounds.

U.S. Imports of papaya, by type, 2001-2005

Country	2001	2002	2003	2004	2005
<i>Million pounds</i>					
Fresh	186.2	195.2	224.6	277.8	255.9
Frozen	1.2	1.5	1.5	2.1	2.7
Dried	3.2	3.5	4.9	3.9	4.0
Paste & Puree	.8	.1	.1	.1	.8
Pulp	.5	.6	1.1	1.2	1.1
Other	6.4	7.0	7.4	7.1	7.4
Total ¹	198.3	207.9	239.6	292.3	271.8

¹ Total may not add to total due to rounding.

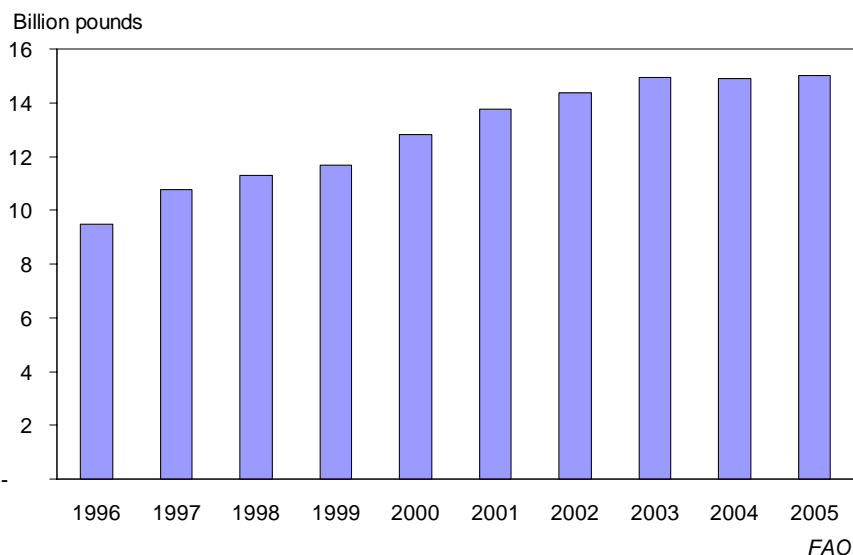
Source: U.S. Department of Commerce, Bureau of the Census.

World Papaya Production Up 1 Percent

World papaya production totaled 15.0 billion pounds in 2005, up 1 percent from a year ago, according to the Food and Agriculture Organization.

Brazil remained the top producer of papayas growing 3.7 billion pounds followed by Mexico producing 2.1 billion pounds of the world's papaya total. Other contributing countries were Nigeria with 1.7 billion, India with 1.5 billion pounds, and Indonesia with 1.4 billion pounds.

WORLD PAPAYA PRODUCTION, 1996-2005



World papaya production, by country, 2001-2005

Country	2001	2002	2003	2004	2005
	<i>Million pounds</i>				
Brazil	3,283	3,522	3,780	3,555	3,748
India	1,543	1,543	1,543	1,543	1,543
Indonesia	1,104	1,334	1,382	1,615	1,426
Mexico	1,926	1,932	2,107	2,107	2,107
Nigeria	1,649	1,664	1,664	1,664	1,664
Thailand	265	265	276	276	289
USA	55	46	43	36	32
Other	3,932	4,058	4,143	4,100	4,206
Total ¹	13,756	14,365	14,938	14,896	15,015

¹ Total may not add to total due to rounding.

Source: Food and Agriculture Organization (FAO), FAOSTAT data, 2006

MARK E. HUDSON
Director

STEVE P. GUNN
Deputy Director

REGINA W. HIDANO
Agricultural Statistician

SANDY K. NAKASONE
Statistical Assistant

Contributions by:

NAOMI LANDGRAF
Maui County

ROBERT MIYAKE & DAVID MATTICE
Hawaii County

JUNE OKAMURA & JOSEFINA RASAY
Honolulu County

JUNE OKAMURA
Kauai County