

HAWAII PAPAYAS



National Agricultural Statistics Service

Hawaii Agricultural Statistics Service
Hawaii Department of Agriculture
Box 22159, Honolulu, HI 96823-2159
(808) 973-9588
FAX (808) 973-2909
Internet Web Site <http://www.nass.usda.gov/hi>

Frequency: Monthly
Release: September 12, 2001

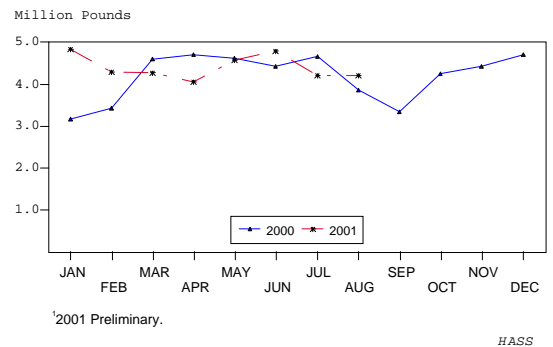
AUGUST FRESH PAPAYA PRODUCTION UP 9 PERCENT FROM LAST YEAR

Hawaii fresh papaya production is estimated at 4.2 million pounds for August, relatively unchanged from last month, but 9 percent more than August 2000.

August weather conditions were variable with a mix of sunshine and showers over major papaya producing orchards. Soil moisture has been adequate in non-irrigated areas. Black spot disease was brought under control through routine spraying. Papaya Ringspot virus losses were generally light.

Papaya growers are expected to receive an estimated 30.0 cents per pound for fresh fruit in August, 9 percent (3.0 cents) lower than last month, and 13 percent (4.5 cents) below last year.

FRESH PAPAYA UTILIZATION
STATE OF HAWAII, 2000-2001¹



FRESH PAPAYA UTILIZATION, STATE OF HAWAII, MONTH OF: August 2001

Island	Sales				Year ago	Year-to-date	
	Local ¹	Intrastate	Out-of-State	Total fresh		2000	2001
	1,000 pounds						
Hawaii.....	119	1,231	2,000	3,350	2,530	21,810	26,495
Kauai.....	46	39	30	115	240	3,185	1,265
Maui/Molokai/Oahu ²	646	0	104	750	1,090	8,505	7,500
State.....	811	1,270	2,134	4,215	3,860	33,500	35,260

¹ On island of production.

² Combined to avoid disclosure of individual operations.

DONALD A. MARTIN
State Agricultural Statistician

ARTHUR Y. OSAKI
Research Statistician

SANDY K. NAKASONE
Statistical Assistant

PAPAYA ACREAGE, STATE OF HAWAII, 2001 WITH COMPARISONS

Island	Total acreage in crop							
	March		June		September		December	
	2000	2001	2000	2001	2000	2001	2000	2001
Hawaii.....	2,100	2,270	1,600	3,000	2,050		2,040	
Kauai.....	325	120	340	105	235		185	
Maui/Molokai/Oahu.....	665	470	645	430	470		470	
State.....	3,090	2,860	2,585	3,535	2,755		2,695	
	Total bearing acres							
Hawaii.....	1,010	1,660	950	1,670	1,190		1,495	
Kauai.....	185	85	200	80	160		125	
Maui/Molokai/Oahu.....	460	280	435	285	260		255	
State.....	1,655	2,025	1,585	2,035	1,610		1,875	

FRESH PAPAYA FARM PRICE, STATE OF HAWAII, 2000-2001

Year	Jan.	Feb.	Mar.	Apr.	May	June	July	Aug.	Sep.	Oct.	Nov.	Dec.	Average
	<i>Cents per pound</i>												
2000	44.9	44.8	38.8	39.6	26.7	25.7	36.3	34.5	30.2	22.7	21.0	21.0	31.6
2001 ¹	21.0	28.0	32.0	37.0	35.0	32.0	33.0	30.0					

¹ Preliminary.