

# HAWAII PAPAYAS



National Agricultural Statistics Service

Hawaii Agricultural Statistics Service  
Hawaii Department of Agriculture  
1428 S King Street, Honolulu, HI 96814-2512  
(808) 973-9588  
FAX (808) 973-2909  
Internet Web Site <http://www.nass.usda.gov/hi>

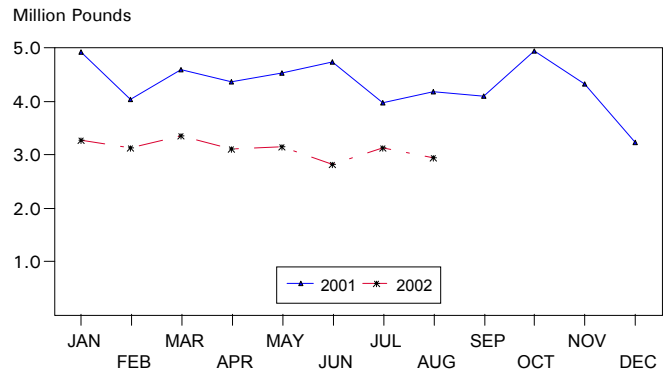
Frequency: Monthly  
Release: September 12, 2002

Hawaii fresh papaya utilization is estimated at 2.95 million pounds for August 2002, 6 percent lower than last month, and 30 percent lower than a year ago.

Weather conditions in August were variable with showers and sunshine over major papaya producing areas. Soil moisture was adequate in non-irrigated orchards.

Papaya growers are expected to receive an estimated 34.0 cents per pound for fresh fruit in August, 3 percent (1.0 cents) lower than last month, but 23 percent (6.3 cents) higher than a year ago.

FRESH PAPAYA UTILIZATION  
STATE OF HAWAII, 2001-2002<sup>1</sup>



<sup>1</sup> 2002 Preliminary.

HASS

## FRESH PAPAYA UTILIZATION, STATE OF HAWAII, MONTH OF: August 2002

Island	Sales				Year ago	Year-to-date	
	Local <sup>1</sup>	Intrastate	Out-of-State	Total fresh		2001	2002
	<i>1,000 pounds</i>						
Hawaii.....	113	1,167	1,220	2,500	3,285	26,640	19,895
Kauai.....	48	27	10	85	115	1,300	830
Maui/Molokai/Oahu <sup>2</sup> .....	345	0	20	365	790	7,460	4,245
State.....	506	1,194	1,250	2,950	4,190	35,400	24,970

<sup>1</sup> On island of production.

<sup>2</sup> Combined to avoid disclosure of individual operations.

DONALD A. MARTIN  
State Agricultural Statistician

ARTHUR Y. OSAKI  
Research Statistician

SANDY K. NAKASONE  
Statistical Assistant

**PAPAYA ACREAGE, STATE OF HAWAII, 2002 WITH COMPARISONS**

Island	Total acreage in crop							
	March		June		September		December	
	2001	2002	2001	2002	2001	2002	2001	2002
Hawaii.....	2,270	2,200	3,000	1,920	2,360			2,275
Kauai.....	120	75	105	75	75			80
Maui/Molokai/Oahu.....	470	210	430	210	255			220
State.....	2,860	2,485	3,535	2,205	2,690			2,575
	Total bearing acres							
Hawaii.....	1,660	1,700	1,670	1,490	1,675			1,620
Kauai.....	85	60	80	60	55			60
Maui/Molokai/Oahu.....	280	175	285	180	210			145
State.....	2,025	1,935	2,035	1,730	1,940			1,825

**FRESH PAPAYA FARM PRICE, STATE OF HAWAII, 2001-2002**

Year	Jan.	Feb.	Mar.	Apr.	May	June	July	Aug.	Sep.	Oct.	Nov.	Dec.	Average
	<i>Cents per pound</i>												
2001	23.8	26.9	30.0	31.7	28.3	28.5	30.0	27.7	27.3	26.0	26.5	28.9	27.9
2002 <sup>1</sup>	34.0	35.0	34.0	38.0	42.0	40.0	35.0	34.0					

<sup>1</sup>Preliminary.

## Papaya Acreage Survey 2002 Results

Hawaii's August 2002 total papaya acreage is pegged at 2,145 acres, 21 percent lower than the same time a year ago. An increase in total acreage from Maui county was not enough to offset declines elsewhere across the State. Bearing acres (harvested) across the State were 24 percent lower than last year.

The Big Island's 122 farms accounted for 90 percent of the State's total papaya acreage. Harvested acreage on the Big Island was 93 percent of the State's harvested papaya acreage, compared to 86 percent a year ago.

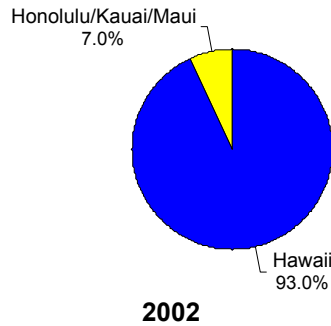
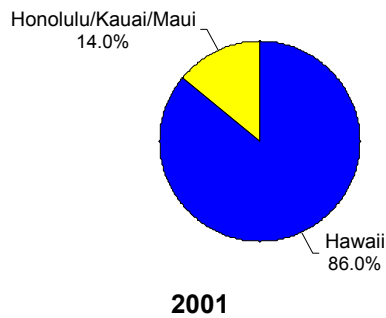
Maui/Molokai/Oahu followed with 24 growers and 7 percent of the total papaya acreage. Kauai's 15 producers had 3 percent of the State's total papaya acreage.

**Papaya acreage, State of Hawaii, August 2002 with 2001<sup>1</sup> comparison**

County	Farms		Bearing		Non-bearing		Total	
	2001	2002	2001	2002	2001	2002	2001	2002
	<i>Number</i>		<i>----- Acres -----</i>					
Hawaii	154	122	1,675	1,385	685	540	2,360	1,925
Maui/Honolulu	35	24	225	70	50	90	275	160
Kauai	17	15	55	40	30	20	85	60
State	206	161	1,955	1,495	765	650	2,720	2,145

<sup>1</sup> Revised.

### Papaya: Harvested Area Hawaii vs. Honolulu/Kauai/Maui August 2002 with 2001 Comparison



## Varietal Summary

Rainbow and Kapoho varieties were 44 and 42 percent of the State's total papaya acreage, respectively. Kapoho was the predominant variety last year. Sunrise represented 10 percent of the acreage grown followed by other varieties which made up the remaining 4 percent.

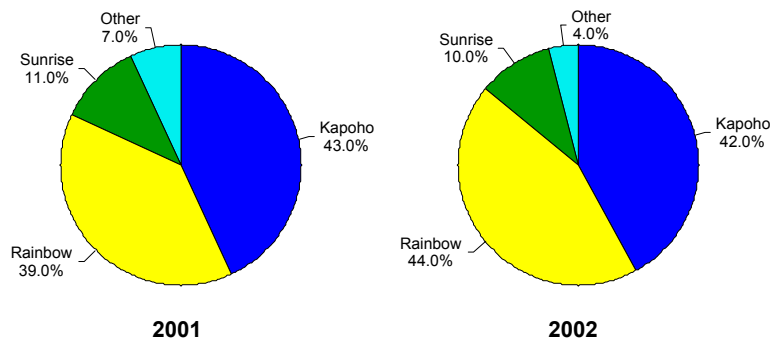
Kapoho represented 49 percent of the bearing acreage, compared to 39 percent from last August. Rainbow was being harvested from 37 percent of the bearing acreage. This was down 41 percent from a year ago.

**Papaya varietal distribution, State of Hawaii, August 2002 with 2001 comparison**

Variety	Bearing		Non-bearing		Total	
	2001	2002	2001	2002	2001	2002
	<i>Percent</i>					
Kapoho	39	49	53	24	43	42
Rainbow	41	37	33	60	39	44
Sunrise	12	8	11	13	11	10
Other <sup>1</sup>	8	6	3	3	7	4
Total	100	100	100	100	100	100

<sup>1</sup> Sunup combined with "Other" to avoid disclosure.

**Papaya: Varietal Distribution  
State of Hawaii  
August 2002 with 2001 Comparison**



## Island Summary

On the Big Island, Kapoho and Rainbow were equally represented at 47 percent each. Together, Kapoho and Rainbow represented over 90 percent of the Big Island's 1,925 total papaya acres. "Other" varieties made up the remaining 6 percent of Big Island papaya acreage.

Big Island's bearing acreage in Rainbow and Kapoho was 40 percent and 53 percent, respectively. This compares with last year's 47 percent and 45 percent for Rainbow and Kapoho, respectively.

### Papaya: Big Island varietal distribution, August 2002 with 2001 comparison

Variety	Bearing		Non-bearing		Total	
	2001	2002	2001	2002	2001	2002
	<i>Percent</i>					
Kapoho	45	53	59	29	49	47
Rainbow	47	40	35	66	44	47
Other <sup>1</sup>	8	7	6	5	7	6
Total	100	100	100	100	100	100

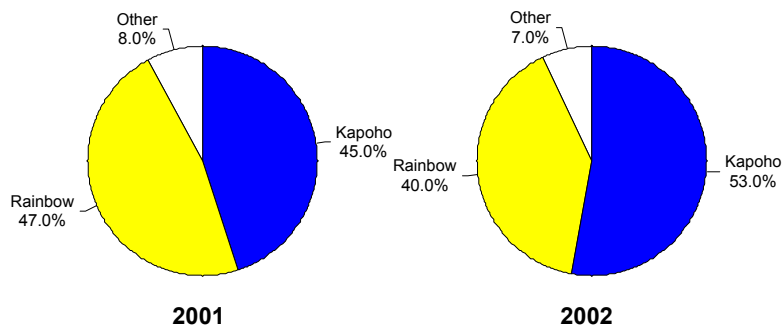
<sup>1</sup> Sunrise combined with "Other".

### Papaya: Big Island distribution within variety, August 2002 with 2001 comparison

Variety	Bearing		Non-bearing		Total	
	2001	2002	2001	2002	2000	2001
	<i>Percent</i>					
Kapoho	65	83	35	17	100	100
Rainbow	77	61	23	39	100	100
Other <sup>1</sup>	75	79	25	21	100	100
Total	71	72	29	28	100	100

<sup>1</sup> Sunrise combined with "Other".

## Papaya: Harvested Acreage Distribution Big Island, August 2002 with 2001 Comparison



# Papaya Yields

## State of Hawaii, 1946-2001

Pounds per acre (1,000)

