

HAWAII PAPAYAS



National Agricultural Statistics Service

Hawaii Agricultural Statistics
Hawaii Department of Agriculture
1428 S King Street, Honolulu, HI 96814-2512
(808) 973-9588
FAX (808) 973-2909
Internet Web Site <http://www.nass.usda.gov/hi>

Frequency: Monthly
Release: September 13, 2004

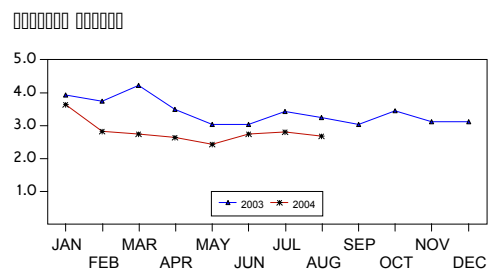
AUGUST FRESH PAPAYA UTILIZATION LOWER THAN YEAR AGO

Hawaii fresh papaya utilization is estimated at 2.68 million pounds for August 2004, 5 percent lower than last month and 17 percent lower than a year ago. Year-to-date fresh sales were 20 percent lower than the same 8-month period of 2003. The lower output compared to a year ago can be attributed to lower harvested acreage and a very wet March which adversely affected flowering and increased disease incidence for several weeks after.

Weather conditions over the major producing areas were variable during August. Adequate rainfall and warm temperatures benefitted orchard development.

Papaya growers are expected to receive an estimated 37.0 cents per pound for fresh fruit in August, 10 percent (4.0 cents) lower than last month and 23 percent (6.9 cents) more than a year ago.

FRESH PAPAYA UTILIZATION
STATE OF HAWAII, 2003-2004¹



¹ 2004 Preliminary.

HAS

FRESH PAPAYA UTILIZATION, STATE OF HAWAII, MONTH OF: August 2004

Island	Sales				Year ago	Year-to-date	
	Local ¹	Intrastate	Out-of-State	Total fresh		2003	2004
	<i>1,000 pounds</i>						
Hawaii.....	144	1,076	1,120	2,340	2,815	24,760	19,880
Kauai.....	47	3	0	50	55	400	355
Maui/Molokai/Oahu ²	214	6	70	290	370	2,945	2,275
State.....	405	1,085	1,190	2,680	3,240	28,105	22,510

¹ On island of production.

² Combined to avoid disclosure of individual operations.

MARK HUDSON
Director

STEVE P. GUNN
Deputy Director

ARTHUR Y. OSAKI
Research Statistician

SANDY K. NAKASONE
Statistical Assistant

PAPAYA ACREAGE, STATE OF HAWAII, 2004 WITH COMPARISONS

Island	Total acreage in crop							
	March		June		September		December	
	2003	2004	2003	2004	2003	2004	2003	2004
Hawaii.....	2,005	1,900	1,915	1,800	2,155		1,990	
Kauai.....	60	50	65	40	45		50	
Maui/Molokai/Oahu.....	195	160	190	160	170		170	
State.....	2,260	2,110	2,170	2,000	2,370		2,210	
	Total bearing acres							
Hawaii.....	1,375	1,000	1,430	900	1,420		1,195	
Kauai.....	40	40	40	30	30		35	
Maui/Molokai/Oahu.....	100	125	105	125	115		120	
State.....	1,515	1,165	1,575	1,055	1,565		1,350	

FRESH PAPAYA FARM PRICE, STATE OF HAWAII, 2003-2004

Year	Jan.	Feb.	Mar.	Apr.	May	June	July	Aug.	Sep.	Oct.	Nov.	Dec.	Average
	<i>Cents per pound</i>												
2003	30.7	32.6	32.8	34.1	33.8	35.0	31.8	30.1	31.1	31.6	29.6	30.8	32.0
2004 ¹	30.0	31.0	39.0	45.0	53.0	37.0	41.0	37.0					

¹Preliminary.

Papaya Acreage Survey 2004 Results

Hawaii's August 2004 total papaya acreage is pegged at 2,185 acres, 8 percent lower than the same time a year ago. Bearing or harvested acres across the State were 12 percent fewer than last year.

The Big Island's 141 farms accounted for 88 percent of the State's total papaya acreage. Harvested acreage on the Big Island was 88 percent of the State's harvested papaya acreage, compared to 91 percent last year.

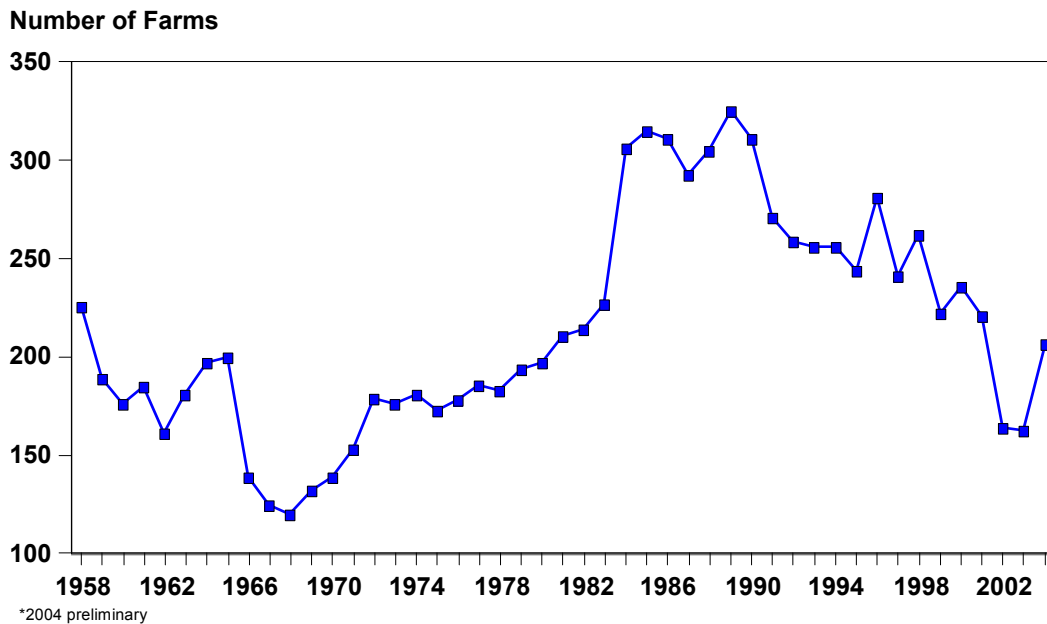
Maui/Molokai/Oahu followed with 47 growers and 10 percent of the total papaya acreage. Kauai's 19 producers had 2 percent of the State's total papaya acreage.

Papaya acreage, State of Hawaii, August 2004 with 2003¹ comparison

County	Farms		Bearing		Non-bearing		Total	
	2003	2004	2003	2004	2003	2004	2003	2004
	<i>Number</i>		<i>Acres</i>					
Hawaii	124	141	1,420	1,220	735	700	2,155	1,920
Maui/Honolulu	24	47	115	140	55	85	170	225
Kauai	15	19	30	25	15	15	45	40
State	163	207	1,565	1,385	805	800	2,370	2,185

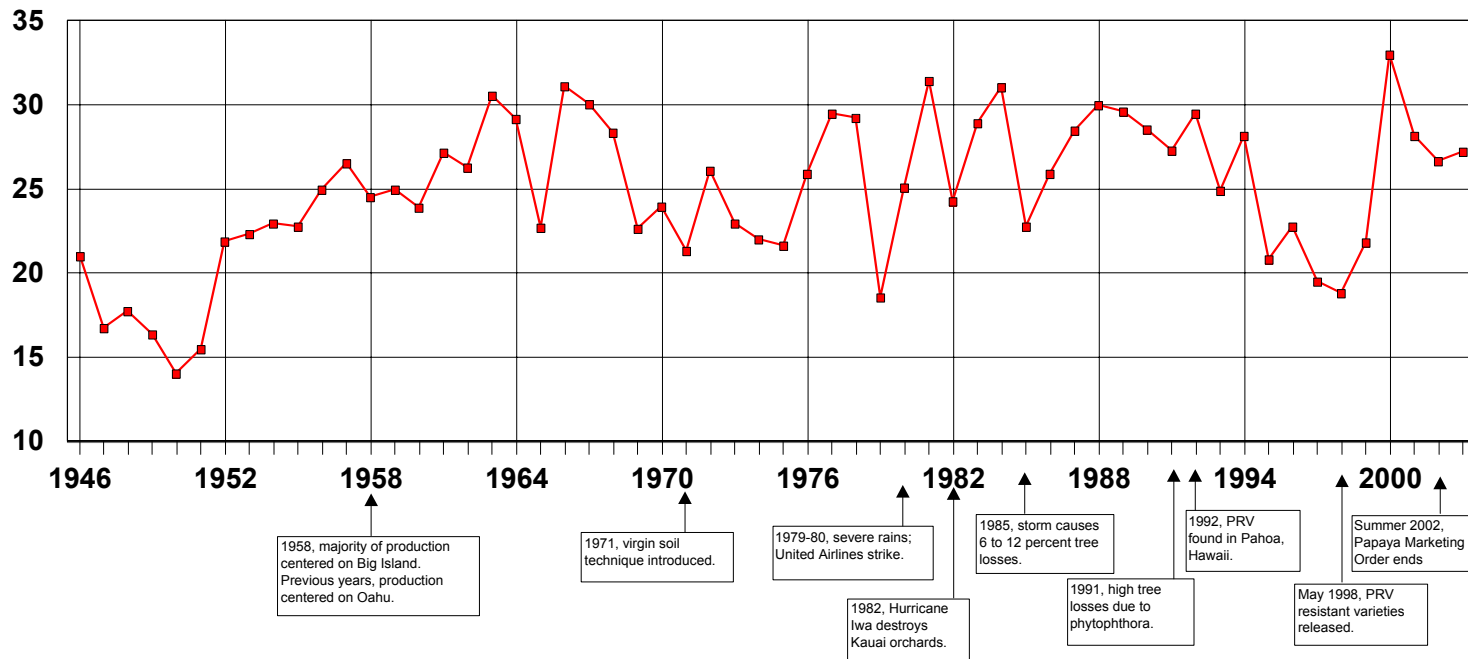
¹Revised.

Papaya: Number of Farms State of Hawaii, 1958-2004*



Papaya Yields State of Hawaii, 1946-2003

Pounds per acre (1,000)



Varietal Summary

Rainbow and Kapoho varieties were 52 and 29 percent of the State's total papaya acreage, respectively. Sunrise represented 11 percent of the acreage grown followed by other varieties which made up the remaining 8 percent.

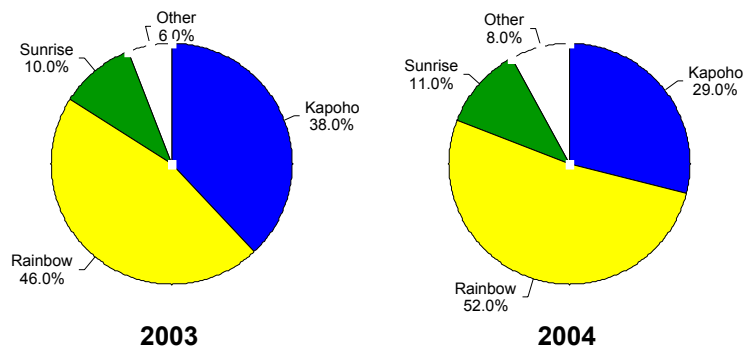
Rainbow represented 50 percent of the bearing acreage, compared to 44 percent from last August. Kapoho was being harvested from 32 percent of the bearing acreage compared to 41 percent a year ago.

Papaya varietal distribution, State of Hawaii, August 2004 with 2003 comparison

Variety	Bearing		Non-bearing		Total	
	2003	2004	2003	2004	2003	2004
	<i>Percent</i>					
Kapoho	41	32	31	26	38	29
Rainbow	44	50	51	56	46	52
Sunrise	9	10	13	13	10	11
Other ¹	6	8	5	5	6	8
Total	100	100	100	100	100	100

¹ Sunup combined with "Other" to avoid disclosure.

August 2004 with 2003 Comparison



Island Summary

On the Big Island, Rainbow represented 59 percent of acreage planted to papaya. Kapoho, which stood at 41 percent last year, represented 33 percent of the August 2004 Big Island papaya acreage. Together, Kapoho and Rainbow represented 92 percent of the Big Island's 1,920 total papaya acres. "Other" varieties made up the remaining 8 percent of Big Island papaya acreage.

Big Island's bearing acreage in Rainbow and Kapoho was 56 percent and 35 percent, respectively. This compares with last year's 47 percent and 45 percent for Rainbow and Kapoho, respectively.

Papaya: Big Island varietal distribution, August 2004 with 2003 comparison

Variety	Bearing		Non-bearing		Total	
	2003	2004	2003	2004	2003	2004
	<i>Percent</i>					
Kapoho	45	35	34	28	41	33
Rainbow	47	56	56	64	50	59
Other ¹	8	9	10	8	9	8
Total	100	100	100	100	100	100

¹ Sunrise combined with "Other".

Papaya: Big Island distribution within variety, August 2004 with 2003 comparison

Variety	Bearing		Non-bearing		Total	
	2003	2004	2003	2004	2003	2004
	<i>Percent</i>					
Kapoho	72	69	28	31	100	100
Rainbow	62	60	38	40	100	100
Other ¹	62	67	38	33	100	100
Total	66	64	34	36	100	100

¹ Sunrise combined with "Other".

Papaya: Harvested Acreage Distribution Big Island, August 2004 with 2003 Comparison

