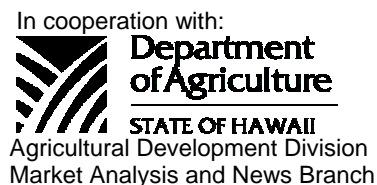




HAWAII PAPAYAS



National Agricultural Statistics Service
 USDA, Hawaii Field Office
 1428 S. King Street
 Honolulu, HI 96814-2512
 Telephone: (808) 973-9588
 FAX: (808) 973-2909
 Internet Web Site <http://www.nass.usda.gov/hi>

Frequency: Monthly

Release: October 27, 2009

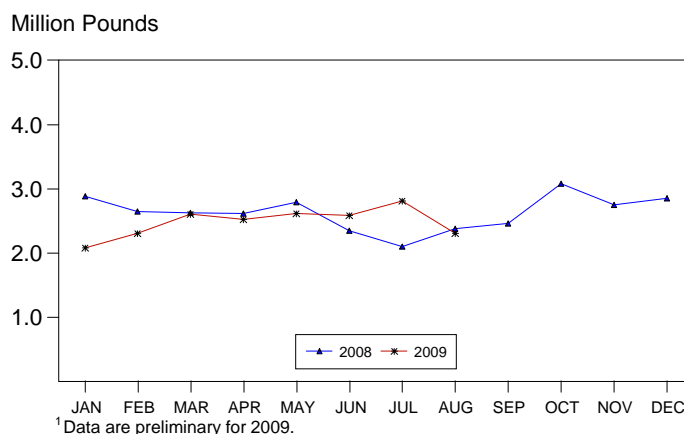
AUGUST PAPAYAS LOWER

Hawaii fresh papaya utilization is estimated at 2.3 million pounds for August 2009, down 18 percent from July 2009 and 3 percent lower than August 2008. Output for January to August 2009 totaled 19.8 million pounds, 3 percent below the same period last year.

In August, weather was mainly dry for the major papaya growing areas. Field preparation and new plantings were underway. Young plantings are doing well. Heavier rainfall earlier in the year resulted in lighter harvest during the month. The crop was mainly in fair to good condition by month's end.

Papaya growers are expected to receive an estimated 46.0 cents per pound for fresh fruit in August, 2 percent (1.0 cent) more than last month, but 7 percent (3.4 cents) less than August 2008.

**PAPAYA: Fresh Utilization,
State of Hawaii, 2008-2009¹**



Due to reduction in force, this release may be discontinued.

FRESH PAPAYA UTILIZATION, STATE OF HAWAII, 2009 WITH COMPARISONS¹

Month	Sales				Year ago	Year-to-date	
	Local ²	Intrastate	Out-of-State	Total fresh		2008	2009
	<i>1,000 pounds</i>						
July	262	1,268	1,275	2,805	2,095	17,990	17,505
August	³	³	³	2,305	2,380	20,370	19,810

¹Data are preliminary for 2009.

²On island of production.

³Data not available.

PAPAYA: ACREAGE IN CROP, BY COUNTY, 2009 WITH COMPARISONS ¹

County	Total acreage in crop							
	March		June		September		December	
	2008	2009	2008	2009	2008	2009	2008	2009
Hawaii.....	1,820	2,150	1,840	1,900	2,110		2,220	
Honolulu/Kauai/Maui ²	220	180	200	175	195		190	
State.....	2,040	2,330	2,040	2,075	2,305		2,410	
	Total bearing acres ³							
Hawaii.....	1,275	1,350	1,185	1,200	1,185		1,330	
Honolulu/Kauai/Maui ²	155	120	130	115	135		130	
State.....	1,430	1,470	1,315	1,315	1,320		1,460	

¹ Data are preliminary for 2009.

² Kauai and Maui combined with Honolulu to avoid disclosure of individual operations.

³ Bearing acres where papayas were harvested.

PAPAYA: Fresh farm price, by State, 2008-2009

Year	Jan.	Feb.	Mar.	Apr.	May	June	July	Aug.	Sep.	Oct.	Nov.	Dec.	Average
	<i>Cents per pound</i>												
2008	43.0	44.8	47.4	47.8	49.7	49.2	50.3	49.4	47.4	42.1	39.1	39.0	45.5
2009 ¹	46.0	50.0	48.0	45.0	44.0	44.0	45.0	46.0					

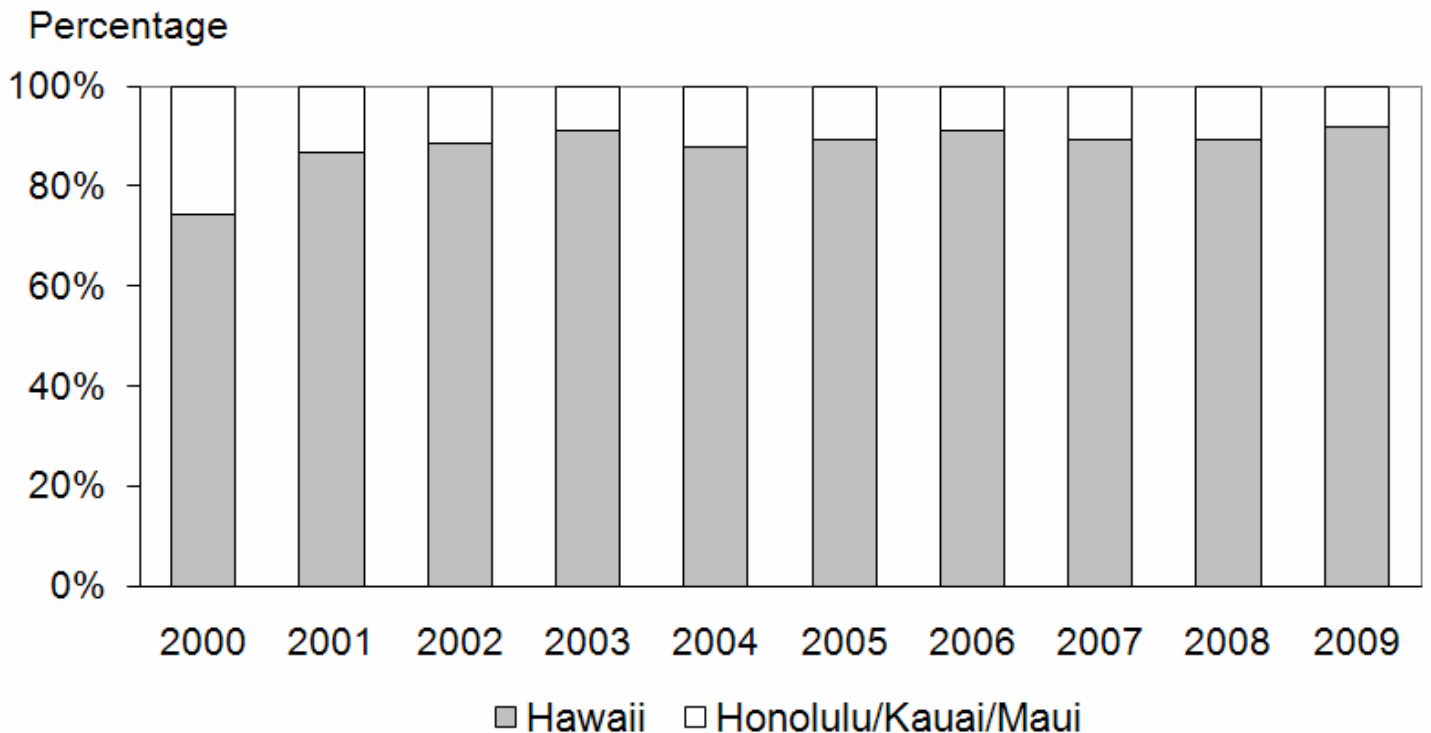
¹ Preliminary.

Papaya Acreage Survey 2009 Results

In 2009, there were 123 farms reported on Hawaii County compared with 119 in 2008. Hawaii County accounted for 92 percent of the States total papaya acreage. Honolulu/Kauai/Maui County reported 54 growers compared to 55 growers a year ago and comprised of the remaining 8 percent of the total acreage.

Some growers commented on the economic difficulties of growing papayas with the high cost of inputs, labor, and low returns for their crop. Additional concerns were weather conditions and controlling disease and pests in their orchards. Other growers mentioned their orchards were doing well with no major incidences.

PAPAYA: Total Acreage, County Distribution, State of Hawaii, 2000-2009



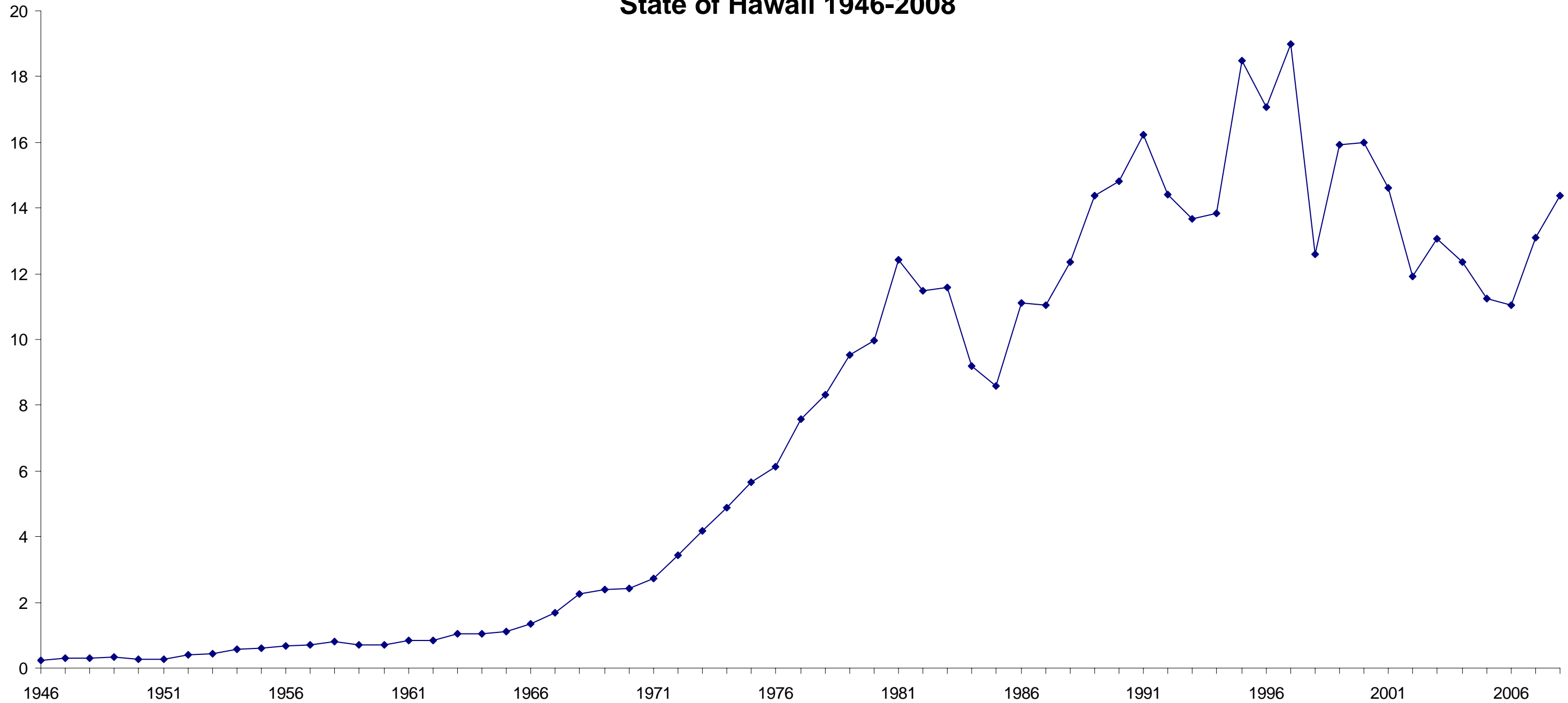
PAPAYA: Number of farms and acreage, by county, 2008 and 2009

County	Farms		Bearing		Non-bearing		Total	
	2008	2009	2008	2009	2008	2009	2008	2009
	---- Number ----		----- Acres -----					
Hawaii	119	123	1,275	1,280	545	710	1,820	1,990
Honolulu/Kauai/Maui ¹	55	54	155	145	65	35	220	180
State	174	177	1,430	1,425	610	745	2,040	2,170

¹ Kauai and Maui combined with Honolulu to avoid disclosure of individual operations.

Million dollars

PAPAYA: Value of Utilized Production, State of Hawaii 1946-2008



1958, majority of the papaya production came from Hawaii County. Honolulu County produced more papayas during the previous years.

1971, virgin soil technique was introduced.

1982, Hurricane Iwa destroys Kauai orchards.

1984, utilization reached a record 80.5 million pounds while the farm price dropped to 11.4 cents per pound (fresh and processed combined).

1985, storm causes 6 to 12 percent tree losses.

1992, Papaya Ringspot Virus (PRV) found in Pahoa on Hawaii County. Hurricane Iniki hits Kauai county devastating orchards.

1997, farm price reached a record high 48.9 cents per pound (fresh and processed combined). Farm value reached a record \$19.0 million.

Summer 2002, Papaya Marketing Order ends.

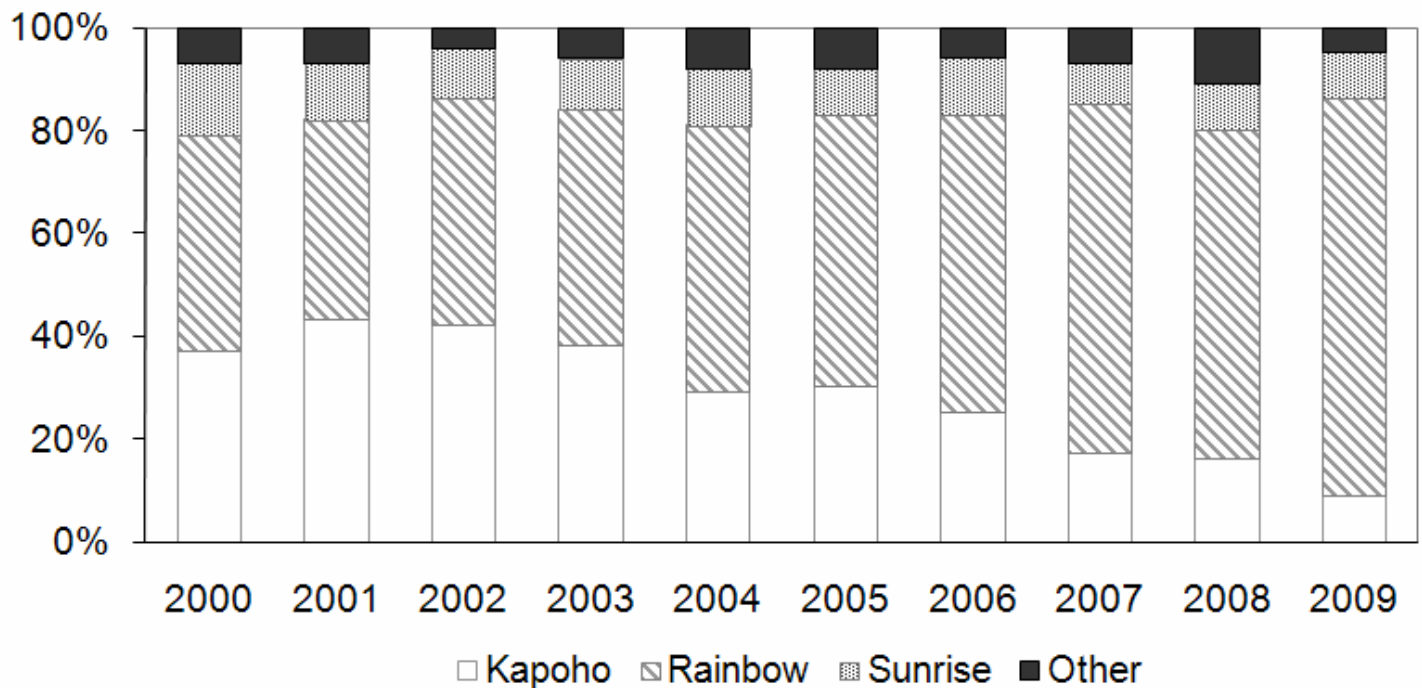
May 1998, Papaya Ringspot Virus (PRV) resistant varieties released.

State 2009 Variety Summary

In 2000, Rainbow and Kapoho ranked as the top two varieties statewide with 42 and 37 percent, respectively. Over the years, a higher percentage of Rainbow has been planted. In 2009, Rainbow and Kapoho accounted for 77 and 9 percent, respectively. Sunrise variety represented 9 percent of the acreage grown followed by "Other" varieties making up 5 percent.

PAPAYA: Total Acreage, Varietal Distribution, State of Hawaii, 2000-2009

Percentage



In 2009, Rainbow represented 76 percent of the bearing acreage statewide compared to 66 percent in 2008. Kapoho comprised of 9 percent of the bearing acreage compared to 15 percent a year ago. Sunrise and "Other" varieties contributed 15 percent to the bearing acreage compared with 19 percent last year.

PAPAYA: Varietal distribution, State of Hawaii, 2008 and 2009

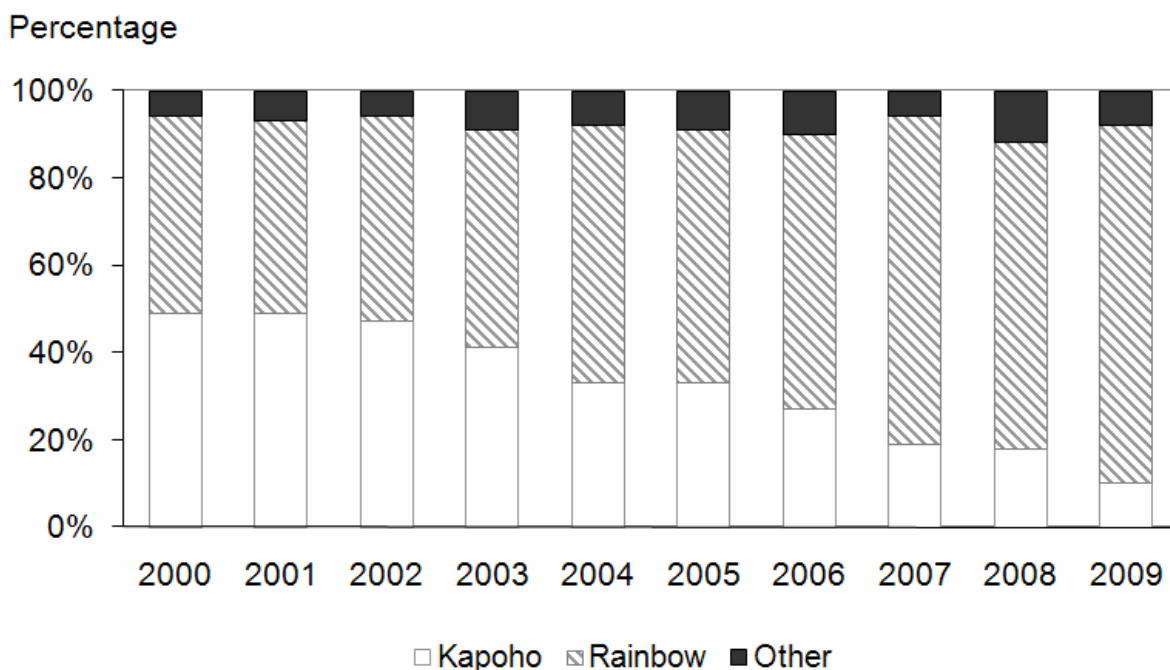
Variety	Bearing		Non-bearing		Total	
	2008	2009	2008	2009	2008	2009
	<i>Percent</i>					
Kapoho	15	9	17	9	16	9
Rainbow	66	76	61	77	64	77
Sunrise	8	8	11	12	9	9
Other ¹	11	7	11	2	11	5
Total	100	100	100	100	100	100

¹ Sunup combined with "Other" to avoid disclosure.

Hawaii County 2009 Variety Summary

In 2000, Hawaii County had 2,050 acres planted in papayas, Kapoho (49 percent), Rainbow (45 percent), and “Other” varieties (6 percent). Annual survey indications show there has been more interest in growing Rainbow. In 2009, Rainbow acreage distribution accounted for 82 percent, Kapoho 10 percent, and “Other” varieties 8 percent.

PAPAYA: Total Acreage, Varietal Distribution, Hawaii County, 2000-2009



PAPAYA: Hawaii County varietal distribution, 2008 and 2009

Variety	Bearing		Non-bearing		Total	
	2008	2009	2008	2009	2008	2009
	<i>Percent</i>					
Kapoho	17	10	19	10	18	10
Rainbow	72	83	66	80	70	82
Other ¹	11	7	15	10	12	8
Total	100	100	100	100	100	100

¹ Sunrise and Sunup are combined with “Other”.

PAPAYA: Hawaii County distribution within variety, 2008 and 2009

Variety	Bearing		Non-bearing		Total	
	2008	2009	2008	2009	2008	2009
	<i>Percent</i>					
Kapoho	70	65	30	35	100	100
Rainbow	73	65	27	35	100	100
Other ¹	65	56	35	44	100	100
Total	72	64	28	36	100	100

¹ Sunrise and Sunup are combined with “Other”.

MARK E. HUDSON
Director

KING J. WHETSTONE
Deputy Director

REGINA W. HIDANO
Agricultural Statistician

SANDY K. NAKASONE
Statistical Assistant

Contributions by:

NAOMI LANDGRAF
Maui County

DAVID MATTICE & SARA KAMIBAYASHI
Hawaii County

JUNE OKAMURA
Honolulu County & Kauai County

NASDA ENUMERATORS