

HAWAII PAPAYAS



National Agricultural Statistics Service

Hawaii Agricultural Statistics Service
 Hawaii Department of Agriculture
 1428 S King Street, Honolulu, HI 96814-2512
 (808) 973-9588
 FAX (808) 973-2909
 Internet Web Site <http://www.nass.usda.gov/hi>

Frequency: Monthly
 Release: October 11, 2002

FRESH UTILIZATION ESTIMATED AT 3.1 MILLION POUNDS

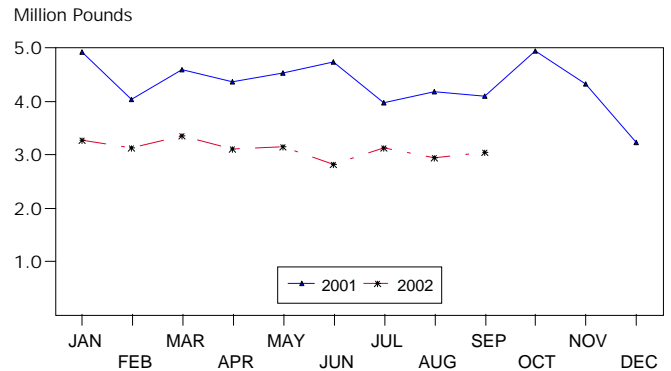
Hawaii fresh papaya utilization is estimated at 3.1 million pounds for September 2002, 3 percent higher than last month, but 26 percent lower than a year ago.

Area in crop totaled 2,170 acres, 2 percent lower than June 2002 and 19 percent lower than September 2001. Harvested area totaled 1,510 acres, 13 percent lower than June 2002 and 22 percent lower than September 2001.

Weather conditions in September were variable with showers and sunshine over major papaya producing areas. Soil moisture was adequate in non-irrigated orchards.

Papaya growers are expected to receive an estimated 30.0 cents per pound for fresh fruit in September, 12 percent (4.0 cents) lower than last month, but 10 percent (2.7 cents) higher than a year ago.

FRESH PAPAYA UTILIZATION STATE OF HAWAII, 2001-2002¹



¹ 2002 Preliminary.

HASS

FRESH PAPAYA UTILIZATION, STATE OF HAWAII, MONTH OF: September 2002

Island	Sales				Year ago	Year-to-date	
	Local ¹	Intrastate	Out-of-State	Total fresh		2001	2002
	<i>1,000 pounds</i>						
Hawaii.....	105	1,140	1,350	2,595	3,320	29,960	22,490
Kauai.....	52	28	10	90	95	1,395	920
Maui/Molokai/Oahu ²	343	2	20	365	690	8,150	4,610
State.....	500	1,170	1,380	3,050	4,105	39,505	28,020

¹ On island of production.

² Combined to avoid disclosure of individual operations.

PAPAYA ACREAGE, STATE OF HAWAII, 2002 WITH COMPARISONS

Island	Total acreage in crop							
	March		June		September		December	
	2001	2002	2001	2002	2001	2002	2001	2002
Hawaii.....	2,270	2,200	3,000	1,920	2,360	1,925	2,275	
Kauai.....	120	75	105	75	75	60	80	
Maui/Molokai/Oahu.....	470	210	430	210	255	185	220	
State.....	2,860	2,485	3,535	2,205	2,690	2,170	2,575	
	Total bearing acres							
Hawaii.....	1,660	1,700	1,670	1,490	1,675	1,385	1,620	
Kauai.....	85	60	80	60	55	40	60	
Maui/Molokai/Oahu.....	280	175	285	180	210	85	145	
State.....	2,025	1,935	2,035	1,730	1,940	1,510	1,825	

FRESH PAPAYA FARM PRICE, STATE OF HAWAII, 2001-2002

Year	Jan.	Feb.	Mar.	Apr.	May	June	July	Aug.	Sep.	Oct.	Nov.	Dec.	Average
	<i>Cents per pound</i>												
2001	23.8	26.9	30.0	31.7	28.3	28.5	30.0	27.7	27.3	26.0	26.5	28.9	27.9
2002 ¹	34.0	35.0	34.0	38.0	42.0	40.0	35.0	34.0	30.0				

¹Preliminary.