

HAWAII PAPAYAS



National Agricultural Statistics Service

Hawaii Agricultural Statistics
Hawaii Department of Agriculture
1428 S King Street, Honolulu, HI 96814-2512
(808) 973-9588
FAX (808) 973-2909
Internet Web Site <http://www.nass.usda.gov/hi>

Frequency: Monthly
Release: October 18, 2004

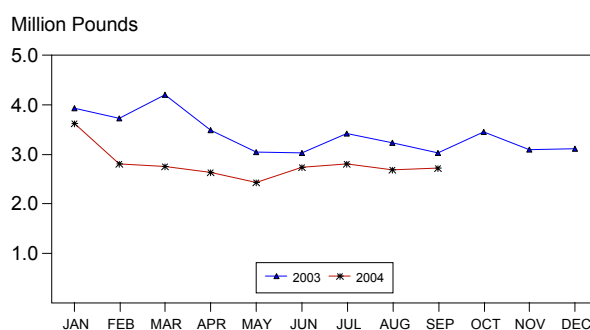
SEPTEMBER FRESH OUTPUT ESTIMATED AT 2.72 MILLION POUNDS

Hawaii fresh papaya utilization is estimated at 2.72 million pounds for September 2004, 1 percent higher than last month, but 10 percent lower than a year ago. Year-to-date fresh sales trail the same 9-month period of 2003 by 19 percent.

Mostly hot and dry weather prevailed during the month of September. Although dry conditions persisted, orchards were in relatively good condition as light passing showers provided enough soil moisture to prevent trees from becoming water stressed. Harvest was active, however, production remained low.

Papaya growers are expected to receive an estimated 37.0 cents per pound for fresh fruit in September, unchanged from August, but 19 percent (5.9 cents) higher than a year ago.

FRESH PAPAYA UTILIZATION
STATE OF HAWAII, 2003-2004¹



¹ 2004 Preliminary.

HAS

FRESH PAPAYA UTILIZATION, STATE OF HAWAII, MONTH OF: September 2004

| Island | Sales | | | | Year ago | Year-to-date | |
|--------------------------------------|---------------------|------------|--------------|-------------|----------|--------------|--------|
| | Local ¹ | Intrastate | Out-of-State | Total fresh | | 2003 | 2004 |
| | <i>1,000 pounds</i> | | | | | | |
| Hawaii..... | 133 | 1,157 | 1,080 | 2,370 | 2,585 | 27,345 | 22,250 |
| Kauai..... | 51 | 4 | 0 | 55 | 70 | 470 | 410 |
| Maui/Molokai/Oahu ² | 214 | 6 | 70 | 290 | 370 | 3,315 | 2,565 |
| State..... | 398 | 1,167 | 1,150 | 2,715 | 3,025 | 31,130 | 25,225 |

¹ On island of production.

² Combined to avoid disclosure of individual operations.

MARK E. HUDSON
Director

STEVE P. GUNN
Deputy Director

ARTHUR Y. OSAKI
Research Statistician

SANDY K. NAKASONE
Statistical Assistant

PAPAYA ACREAGE, STATE OF HAWAII, 2004 WITH COMPARISONS

| Island | Total acreage in crop | | | | | | | |
|------------------------|-----------------------|-------|-------|-------|-----------|-------|----------|------|
| | March | | June | | September | | December | |
| | 2003 | 2004 | 2003 | 2004 | 2003 | 2004 | 2003 | 2004 |
| Hawaii..... | 2,005 | 1,900 | 1,915 | 1,800 | 2,155 | 1,800 | 1,990 | |
| Kauai..... | 60 | 50 | 65 | 40 | 45 | 40 | 50 | |
| Maui/Molokai/Oahu..... | 195 | 160 | 190 | 160 | 170 | 150 | 170 | |
| State..... | 2,260 | 2,110 | 2,170 | 2,000 | 2,370 | 1,990 | 2,210 | |
| | Total bearing acres | | | | | | | |
| Hawaii..... | 1,375 | 1,000 | 1,430 | 900 | 1,420 | 900 | 1,195 | |
| Kauai..... | 40 | 40 | 40 | 30 | 30 | 25 | 35 | |
| Maui/Molokai/Oahu..... | 100 | 125 | 105 | 125 | 115 | 125 | 120 | |
| State..... | 1,515 | 1,165 | 1,575 | 1,055 | 1,565 | 1,050 | 1,350 | |

FRESH PAPAYA FARM PRICE, STATE OF HAWAII, 2003-2004

| Year | Jan. | Feb. | Mar. | Apr. | May | June | July | Aug. | Sep. | Oct. | Nov. | Dec. | Average |
|-------------------|------------------------|------|------|------|------|------|------|------|------|------|------|------|---------|
| | <i>Cents per pound</i> | | | | | | | | | | | | |
| 2003 | 30.7 | 32.6 | 32.8 | 34.1 | 33.8 | 35.0 | 31.8 | 30.1 | 31.1 | 31.6 | 29.6 | 30.8 | 32.0 |
| 2004 ¹ | 30.0 | 31.0 | 39.0 | 45.0 | 53.0 | 37.0 | 41.0 | 37.0 | 37.0 | | | | |

¹Preliminary.