

# HAWAII PAPAYAS



USDA, NASS, Hawaii Field Office

National Agricultural Statistics Service  
In cooperation with Hawaii Department of Agriculture  
Agricultural Development Division  
1428 S. King Street  
Honolulu, HI 96814-2512  
(808) 973-9588  
FAX (808) 973-2909  
Internet Web Site <http://www.nass.usda.gov/hi>

Frequency: Monthly  
Release: October 12, 2005

## SEPTEMBER FRESH UTILIZATION LOWER THAN 2004

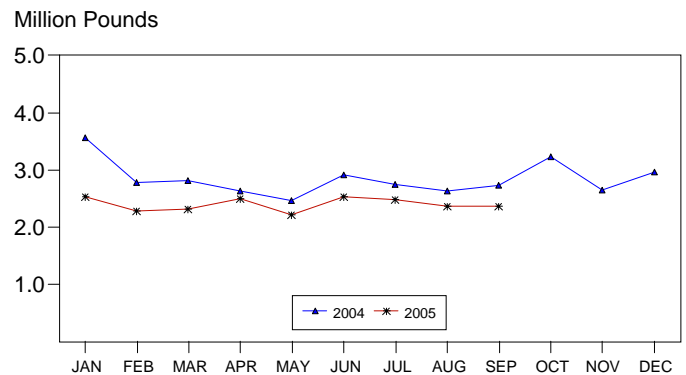
Hawaii fresh papaya utilization is estimated at 2.37 million pounds for September 2005, unchanged from August this year, but 13 percent less than September last year.

Total in crop acreage is estimated at 2,380 for September, 8 percent less than June 2005, but 13 percent more than September 2004. Harvested area totaled 1,455 acres, 8 percent below June a year ago, but a 6 percent above from September the previous year.

In September, weather conditions were generally wet. Soggy fields delayed orchard maintenance resulting in weed infestation, an increase in disease incidences, and suspended planting schedules. Young trees were in fair to good condition despite rainy weather.

Papaya growers are expected to receive an estimated 35.0 cents per pound for fresh fruit in September, declining 3 percent (1.0 cent) from last month and dropping 6 percent (2.2 cents) from the same month a year ago.

## PAPAYA: Fresh Utilization, State of Hawaii, 2004-2005<sup>1</sup>



<sup>1</sup> 2005 Preliminary.

USDA, NASS, Hawaii Field Office

## FRESH PAPAYA UTILIZATION, STATE OF HAWAII, MONTH OF: September 2005

Island	Sales				Year ago	Year-to-date	
	Local <sup>1</sup>	Intrastate	Out-of-State	Total fresh		2004	2005
	<i>1,000 pounds</i>						
Hawaii.....	100	1,160	800	2,060	2,380	22,180	18,760
Kauai.....	40	0	0	40	55	410	360
Maui/Molokai/Oahu <sup>2</sup> .....	195	5	70	270	290	2,675	2,485
State.....	335	1,165	870	2,370	2,725	25,265	21,605

<sup>1</sup> On island of production.

<sup>2</sup> Combined to avoid disclosure of individual operations.

MARK E. HUDSON  
Director

STEVE P. GUNN  
Deputy Director

REGINA W. HIDANO  
Agricultural Statistician

SANDY K. NAKASONE  
Statistical Assistant

**PAPAYA ACREAGE, STATE OF HAWAII, 2005 WITH COMPARISONS**

Island	Total acreage in crop							
	March		June		September		December	
	2004	2005	2004	2005	2004	2005	2004	2005
Hawaii.....	1,900	2,265	1,800	2,355	1,920	2,200	2,050	
Kauai.....	50	35	40	40	40	30	40	
Maui/Molokai/Oahu.....	160	190	160	205	150	150	140	
State.....	2,110	2,490	2,000	2,600	2,110	2,380	2,230	

Total bearing acres								
Hawaii.....	1,000	1,270	900	1,405	1,220	1,325	1,245	
Kauai.....	35	25	30	30	25	25	25	
Maui/Molokai/Oahu.....	125	140	125	145	125	105	130	
State.....	1,160	1,435	1,055	1,580	1,370	1,455	1,400	

**FRESH PAPAYA FARM PRICE, STATE OF HAWAII, 2004-2005**

Year	Jan.	Feb.	Mar.	Apr.	May	June	July	Aug.	Sep.	Oct.	Nov.	Dec.	Average
	<i>Cents per pound</i>												
2004	31.0	31.2	37.4	40.0	41.0	39.5	37.2	36.6	37.2	35.8	34.3	33.4	36.1
2005 <sup>1</sup>	31.0	37.0	40.0	42.0	44.0	37.0	37.0	36.0	35.0				

<sup>1</sup> Preliminary.