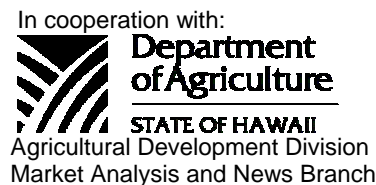




HAWAII PAPAYAS



National Agricultural Statistics Service
 USDA, Hawaii Field Office
 1428 S. King Street
 Honolulu, HI 96814-2512
 Telephone: (808) 973-9588
 FAX: (808) 973-2909
 Internet Web Site <http://www.nass.usda.gov/hi>

Frequency: Monthly

Release: November 13, 2007

MORE FRESH PAPAYAS IN SEPTEMBER

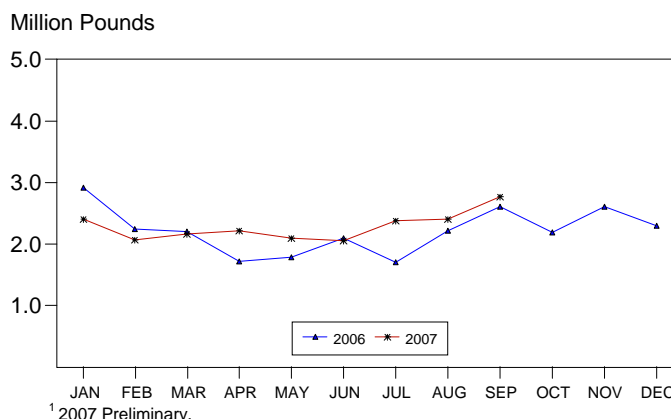
Hawaii fresh papaya utilization is estimated at 2.8 million pounds for September 2007, up 15 percent from August 2007 and 6 percent higher than September 2006. Cumulative sales for the first three quarters of 2007 totaled 20.6 million pounds, 6 percent higher than the comparable period in 2006.

Total acreage in crop for September is estimated at 2,105, 21 percent higher than June 2007, but 2 percent down from the same month a year ago. Harvested area totaled 1,375 acres, up 72 percent from June 2007 and 4 percent above last year.

Growing conditions were generally favorable for orchards in September. Trade wind showers helped replenish soil moisture levels combined with sunny periods. Drier areas still needed irrigation for normal crop progress. Fields were being cleared for upcoming plantings. Young plantings are flowering and setting fruits. Active harvesting was underway in mature fields with full fruit columns. Ripe fruits were picked and discarded. Wild pigs, insects, and disease were still concerns for some growers. Orchards affected by the recent brush fire experienced a reduction in acreage and output. Growers salvaged what they could.

Papaya growers are expected to receive an estimated 37.0 cents per pound for fresh fruit in September, 8 percent (3.0 cents) less than August and 4 percent (1.6 cents) below a year ago.

PAPAYA: Fresh Utilization, State of Hawaii, 2006-2007¹



FRESH PAPAYA UTILIZATION, STATE OF HAWAII, 2007 WITH COMPARISONS¹

| Month | Sales | | | | Year ago | Year-to-date | |
|-----------------|---------------------|------------|--------------|-------------|----------|--------------|--------|
| | Local ² | Intrastate | Out-of-State | Total fresh | | 2006 | 2007 |
| | <i>1,000 pounds</i> | | | | | | |
| August..... | 298 | 1,327 | 780 | 2,405 | 2,215 | 16,895 | 17,820 |
| September | 287 | 1,368 | 1,110 | 2,765 | 2,615 | 19,510 | 20,585 |

¹ Data are preliminary for 2007.

² On island of production.

PAPAYA ACREAGE, STATE OF HAWAII, 2007 WITH COMPARISONS ¹

| County | Total acreage in crop | | | | | | | |
|--|-----------------------|--------------|--------------|--------------|--------------|--------------|--------------|------|
| | March | | June | | September | | December | |
| | 2006 | 2007 | 2006 | 2007 | 2006 | 2007 | 2006 | 2007 |
| Hawaii..... | 1,850 | 1,750 | 1,575 | 1,540 | 1,965 | 1,905 | 2,170 | |
| Honolulu/Kauai/Maui ² | 220 | 185 | 170 | 195 | 175 | 200 | 180 | |
| State..... | 2,070 | 1,935 | 1,745 | 1,735 | 2,140 | 2,105 | 2,350 | |

| Total harvested acres ³ | | | | | | | | |
|--|--------------|------------|--------------|------------|--------------|--------------|--------------|--|
| Hawaii..... | 1,620 | 750 | 1,385 | 675 | 1,205 | 1,240 | 1,025 | |
| Honolulu/Kauai/Maui ² | 165 | 120 | 125 | 125 | 120 | 135 | 110 | |
| State..... | 1,785 | 870 | 1,510 | 800 | 1,325 | 1,375 | 1,135 | |

¹ Data are preliminary for 2007. ² Kauai and Maui combined with Honolulu to avoid disclosure of individual operations. ³ Bearing acres where papayas were harvested.

FRESH PAPAYA FARM PRICE, STATE OF HAWAII, 2006-2007

| Year | Jan. | Feb. | Mar. | Apr. | May | June | July | Aug. | Sep. | Oct. | Nov. | Dec. | Average |
|-------------------|------------------------|------|------|------|------|------|------|------|------|------|------|------|---------|
| | <i>Cents per pound</i> | | | | | | | | | | | | |
| 2006 | 34.1 | 36.5 | 42.1 | 46.3 | 51.5 | 47.1 | 47.0 | 48.1 | 38.6 | 38.1 | 38.3 | 36.4 | 41.3 |
| 2007 ¹ | 38.0 | 41.0 | 47.0 | 48.0 | 49.0 | 52.0 | 47.0 | 40.0 | 37.0 | | | | |

¹ Data are preliminary for 2007.

MARK E. HUDSON
Director

STEVE P. GUNN
Deputy Director

REGINA W. HIDANO
Agricultural Statistician

SANDY K. NAKASONE
Statistical Assistant

Contributions by:

NAOMI LANDGRAF
Maui County

ROBERT MIYAKE & DAVID MATTICE
Hawaii County

JUNE OKAMURA
Honolulu County & Kauai County

NASDA ENUMERATORS