

HAWAII PAPAYAS



National Agricultural Statistics Service

Hawaii Agricultural Statistics Service
Hawaii Department of Agriculture
1428 S King Street, Honolulu, HI 96814-2512
(808) 973-9588
FAX (808) 973-2909
Internet Web Site <http://www.nass.usda.gov/hi>

Frequency: Monthly
Release: November 12, 2002

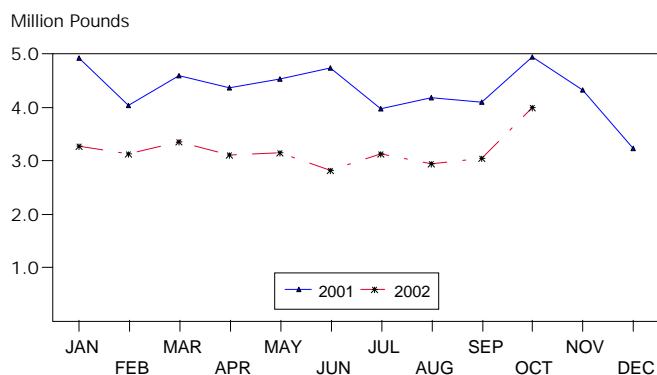
OCTOBER FRESH UTILIZATION UP 31 PERCENT

Hawaii fresh papaya utilization is estimated at 4.0 million pounds for October 2002, up 31 percent from last month, but 19 percent lower than a year ago.

October weather conditions were mostly favorable with showers and sunshine over major papaya producing areas. Soil moisture was adequate in non-irrigated orchards.

Papaya growers are expected to receive an estimated 27.0 cents per pound for fresh fruit in October, 10 percent (3.0 cents) lower than last month, but 4 percent (1.0 cents) higher than a year ago.

FRESH PAPAYA UTILIZATION
STATE OF HAWAII, 2001-2002¹



¹ 2002 Preliminary.

HASS

FRESH PAPAYA UTILIZATION, STATE OF HAWAII, MONTH OF: October 2002

Island	Sales				Year ago	Year-to-date	
	Local ¹	Intrastate	Out-of-State	Total fresh		2001	2002
	<i>1,000 pounds</i>						
Hawaii.....	165	1,435	1,970	3,570	4,190	34,150	26,060
Kauai.....	37	23	10	70	100	1,495	990
Maui/Molokai/Oahu ²	342	3	20	365	650	8,800	4,975
State.....	544	1,461	2,000	4,005	4,940	44,445	32,025

¹ On island of production.

² Combined to avoid disclosure of individual operations.

DONALD A. MARTIN
State Agricultural Statistician

ARTHUR Y. OSAKI
Research Statistician

SANDY K. NAKASONE
Statistical Assistant

PAPAYA ACREAGE, STATE OF HAWAII, 2002 WITH COMPARISONS

Island	Total acreage in crop							
	March		June		September		December	
	2001	2002	2001	2002	2001	2002	2001	2002
Hawaii.....	2,270	2,200	3,000	1,920	2,360	1,925	2,275	
Kauai.....	120	75	105	75	75	60	80	
Maui/Molokai/Oahu.....	470	210	430	210	255	185	220	
State.....	2,860	2,485	3,535	2,205	2,690	2,170	2,575	
	Total bearing acres							
Hawaii.....	1,660	1,700	1,670	1,490	1,675	1,385	1,620	
Kauai.....	85	60	80	60	55	40	60	
Maui/Molokai/Oahu.....	280	175	285	180	210	85	145	
State.....	2,025	1,935	2,035	1,730	1,940	1,510	1,825	

FRESH PAPAYA FARM PRICE, STATE OF HAWAII, 2001-2002

Year	Jan.	Feb.	Mar.	Apr.	May	June	July	Aug.	Sep.	Oct.	Nov.	Dec.	Average
	<i>Cents per pound</i>												
2001	23.8	26.9	30.0	31.7	28.3	28.5	30.0	27.7	27.3	26.0	26.5	28.9	27.9
2002 ¹	34.0	35.0	34.0	38.0	42.0	40.0	35.0	34.0	30.0	27.0			

¹Preliminary.