

HAWAII PAPAYAS



National Agricultural Statistics Service

Hawaii Agricultural Statistics Service
 Hawaii Department of Agriculture
 1428 S King Street, Honolulu, HI 96814-2512
 (808) 973-9588
 FAX (808) 973-2909
 Internet Web Site <http://www.nass.usda.gov/hi>

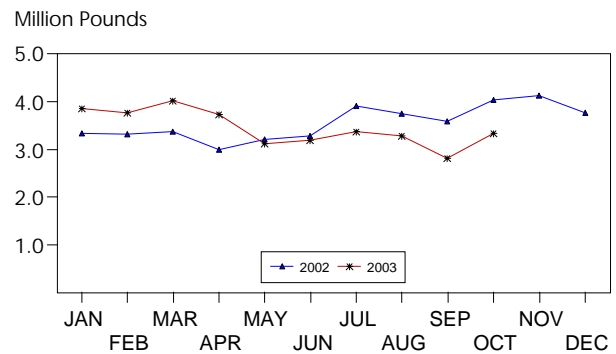
Frequency: Monthly
 Release: November 14, 2003

OCTOBER FRESH UTILIZATION UP 18 PERCENT

Hawaii fresh papaya utilization is estimated at 3.3 million pounds for October 2003, 18 percent higher than last month, but 17 percent lower than October 2002.

Weather conditions were variable during the month of October. Dry conditions during the last two weeks of September carried over into the first week of October. Light rainfall during the middle of the month helped replenish soil moisture in non-irrigated orchards. However, dry conditions returned in the last week which will slow progress of new plantings.

FRESH PAPAYA UTILIZATION STATE OF HAWAII, 2002-2003¹



¹ 2003 Preliminary.

HASS

Papaya growers are expected to receive an estimated 31.0 cents per pound for fresh fruit in October, 9 percent (3.0 cents) lower than last month, but 24 percent (6.1 cents) higher than a year ago.

FRESH PAPAYA UTILIZATION, STATE OF HAWAII, MONTH OF: October 2003

Island	Sales				Year ago	Year-to-date	
	Local ¹	Intrastate	Out-of-State	Total fresh		2002	2003
	<i>1,000 pounds</i>						
Hawaii.....	121	1,499	1,280	2,900	3,600	28,830	30,290
Kauai.....	47	18	5	70	70	990	535
Maui/Molokai/Oahu ²	347	3	20	370	365	4,980	3,685
State.....	515	1,520	1,305	3,340	4,035	34,800	34,510

¹ On island of production.

² Combined to avoid disclosure of individual operations.

DONALD A. MARTIN
 State Agricultural Statistician

ARTHUR Y. OSAKI
 Research Statistician

SANDY K. NAKASONE
 Statistical Assistant

PAPAYA ACREAGE, STATE OF HAWAII, 2003 WITH COMPARISONS

Island	Total acreage in crop							
	March		June		September		December	
	2002	2003	2002	2003	2002	2003	2002	2003
Hawaii.....	2,200	2,015	1,920	1,925	1,925	2,165	1,925	
Kauai.....	80	55	75	65	60	95	55	
Maui/Molokai/Oahu.....	210	185	210	185	185	105	170	
State.....	2,490	2,255	2,205	2,175	2,170	2,365	2,150	
	Total bearing acres							
Hawaii.....	1,700	1,600	1,490	1,440	1,385	1,430	1,465	
Kauai.....	60	40	60	40	40	80	35	
Maui/Molokai/Oahu.....	170	95	175	95	75	55	80	
State.....	1,930	1,735	1,725	1,575	1,500	1,565	1,580	

FRESH PAPAYA FARM PRICE, STATE OF HAWAII, 2002-2003

Year	Jan.	Feb.	Mar.	Apr.	May	June	July	Aug.	Sep.	Oct.	Nov.	Dec.	Average
	<i>Cents per pound</i>												
2002	29.4	29.5	28.3	30.2	30.4	28.3	27.9	27.5	26.9	24.9	25.3	26.1	27.7
2003 ¹	28.0	32.0	35.0	36.0	38.0	38.0	35.0	32.0	34.0	31.0			

¹Preliminary.