

HAWAII PAPAYAS



National Agricultural Statistics Service

Hawaii Agricultural Statistics
Hawaii Department of Agriculture
1428 S King Street, Honolulu, HI 96814-2512
(808) 973-9588
FAX (808) 973-2909
Internet Web Site <http://www.nass.usda.gov/hi>

Frequency: Monthly
Release: November 15, 2004

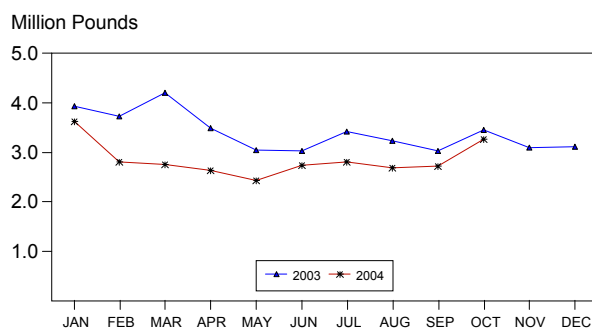
OCTOBER FRESH OUTPUT ESTIMATED AT 3.27 MILLION POUNDS

Hawaii fresh papaya utilization is estimated at 3.27 million pounds for October 2004, 20 percent higher than last month, but 5 percent lower than a year ago. Year-to-date fresh sales trail the same 10-month period of 2003 by 18 percent.

Ample showers with occasional sunny periods boosted orchard and fruit development. Soil moisture in non-irrigated orchards has been adequate.

Papaya growers are expected to receive an estimated 35.0 cents per pound for fresh fruit in October, down 5 percent (2.0 cents) from September, but 11 percent (3.4 cents) higher than a year ago.

FRESH PAPAYA UTILIZATION
STATE OF HAWAII, 2003-2004¹



¹ 2004 Preliminary.

HAS

FRESH PAPAYA UTILIZATION, STATE OF HAWAII, MONTH OF: October 2004

Island	Sales				Year ago	Year-to-date	
	Local ¹	Intrastate	Out-of-State	Total fresh		2003	2004
	<i>1,000 pounds</i>						
Hawaii.....	128	1,622	1,170	2,920	3,010	30,355	25,170
Kauai.....	51	4	0	55	70	540	465
Maui/Molokai/Oahu ²	209	11	70	290	370	3,685	2,855
State.....	388	1,637	1,240	3,265	3,450	34,580	28,490

¹ On island of production.

² Combined to avoid disclosure of individual operations.

MARK E. HUDSON
Director

STEVE P. GUNN
Deputy Director

ARTHUR Y. OSAKI
Research Statistician

SANDY K. NAKASONE
Statistical Assistant

PAPAYA ACREAGE, STATE OF HAWAII, 2004 WITH COMPARISONS

Island	Total acreage in crop							
	March		June		September		December	
	2003	2004	2003	2004	2003	2004 ¹	2003	2004
Hawaii.....	2,005	1,900	1,915	1,800	2,155	1,920	1,990	
Kauai.....	60	50	65	40	45	40	50	
Maui/Molokai/Oahu.....	195	160	190	160	170	150	170	
State.....	2,260	2,110	2,170	2,000	2,370	2,110	2,210	
	Total bearing acres							
Hawaii.....	1,375	1,000	1,430	900	1,420	1,220	1,195	
Kauai.....	40	40	40	30	30	25	35	
Maui/Molokai/Oahu.....	100	125	105	125	115	125	120	
State.....	1,515	1,165	1,575	1,055	1,565	1,370	1,350	

¹ Revised.

FRESH PAPAYA FARM PRICE, STATE OF HAWAII, 2003-2004

Year	Jan.	Feb.	Mar.	Apr.	May	June	July	Aug.	Sep.	Oct.	Nov.	Dec.	Average
	<i>Cents per pound</i>												
2003	30.7	32.6	32.8	34.1	33.8	35.0	31.8	30.1	31.1	31.6	29.6	30.8	32.0
2004 ¹	30.0	31.0	39.0	45.0	53.0	37.0	41.0	37.0	37.0	35.0			

¹ Preliminary.