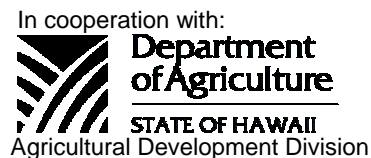




National Agricultural Statistics Service
 USDA, NASS, Hawaii Field Office
 1428 S. King Street
 Honolulu, HI 96814-2512
 Telephone: (808) 973-9588
 FAX: (808) 973-2909
 Internet Web Site <http://www.nass.usda.gov/hi>



HAWAII PAPAYAS

Frequency: Monthly

Release: November 10, 2005

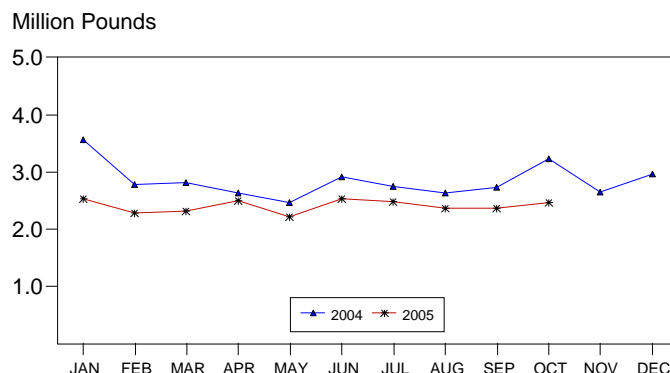
OCTOBER FRESH OUTPUT DOWN

Hawaii fresh papaya utilization is estimated at 2.47 million pounds for October 2005, up 4 percent from last month, but down 23 percent from October 2004.

In October, weather conditions were variable for orchards. Wet conditions spurred growth of weeds and higher incidences of disease damage but also encourage flowering at the same time. Higher production is expected in the upcoming spring months. Previous dry weather in April and May of this year left gaps in the columns may reduce supply for the next few weeks.

Papaya growers are expected to receive an estimated 32.0 cents per pound for fresh fruit in October, down 9 percent (3.0 cents) from last month and dropping 11 percent (3.8 cents) from the same month a year ago.

PAPAYA: Fresh Utilization, State of Hawaii, 2004-2005¹



¹ 2005 Preliminary.

USDA, NASS, Hawaii Field Office

FRESH PAPAYA UTILIZATION, STATE OF HAWAII, MONTH OF: October 2005

Island	Sales				Year ago	Year-to-date	
	Local ¹	Intrastate	Out-of-State	Total fresh		2004	2005
	<i>1,000 pounds</i>						
Hawaii.....	111	1,279	800	2,190	2,860	25,040	20,950
Kauai.....	40	0	0	40	55	465	400
Maui/Molokai/Oahu ²	166	4	70	240	310	2,985	2,725
State.....	317	1,283	870	2,470	3,225	28,490	24,075

¹ On island of production.

² Combined to avoid disclosure of individual operations.

MARK E. HUDSON
 Director

STEVE P. GUNN
 Deputy Director

REGINA W. HIDANO
 Agricultural Statistician

SANDY K. NAKASONE
 Statistical Assistant

PAPAYA ACREAGE, STATE OF HAWAII, 2005 WITH COMPARISONS

Island	Total acreage in crop							
	March		June		September		December	
	2004	2005	2004	2005	2004	2005	2004	2005
Hawaii.....	1,900	2,265	1,800	2,355	1,920	2,200	2,050	
Kauai.....	50	35	40	40	40	30	40	
Maui/Molokai/Oahu.....	160	190	160	205	150	150	140	
State.....	2,110	2,490	2,000	2,600	2,110	2,380	2,230	

Total bearing acres								
Hawaii.....	1,000	1,270	900	1,405	1,220	1,325	1,245	
Kauai.....	35	25	30	30	25	25	25	
Maui/Molokai/Oahu.....	125	140	125	145	125	105	130	
State.....	1,160	1,435	1,055	1,580	1,370	1,455	1,400	

FRESH PAPAYA FARM PRICE, STATE OF HAWAII, 2004-2005

Year	Jan.	Feb.	Mar.	Apr.	May	June	July	Aug.	Sep.	Oct.	Nov.	Dec.	Average
	<i>Cents per pound</i>												
2004	31.0	31.2	37.4	40.0	41.0	39.5	37.2	36.6	37.2	35.8	34.3	33.4	36.1
2005 ¹	31.0	37.0	40.0	42.0	44.0	37.0	37.0	36.0	35.0	32.0			

¹ Preliminary.