



HAWAII PAPAYAS



National Agricultural Statistics Service
 USDA, Hawaii Field Office
 1428 S. King Street
 Honolulu, HI 96814-2512
 Telephone: (808) 973-9588
 FAX: (808) 973-2909
 Internet Web Site <http://www.nass.usda.gov/hi>

Frequency: Monthly

Release: November 16, 2006

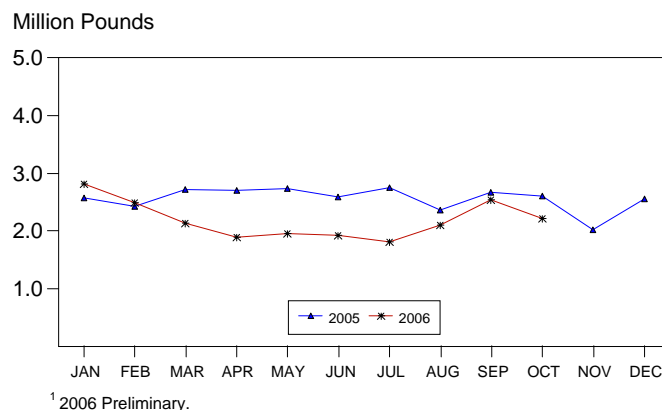
OCTOBER FRESH PAPAYA OUTPUT DECLINES

Hawaii fresh papaya utilization is estimated at 2.2 million pounds for October 2006, declining 12 percent from September 2006 and dropping 15 percent from October 2005. Fresh papaya output for the first 10 months of the year fell 16 percent from the comparable period last year to 21.9 million pounds.

In October, orchards received sunny weather with periods of heavy showers. Growers stepped up spraying efforts to limit disease outbreaks caused by wet weather. New seedlings continued to sprout. Young plantings made good progress. Harvesting was active but at a lower output.

Papaya growers are expected to receive an estimated 38.0 cents per pound for fresh fruit in October, unchanged from last month, but 14 percent (4.8 cents) above a year ago.

PAPAYA: Fresh Utilization, State of Hawaii, 2005-2006 ¹



FRESH PAPAYA UTILIZATION, STATE OF HAWAII, MONTH OF: October 2006

County	Sales				Year ago	Year-to-date	
	Local ¹	Intrastate	Out-of-State	Total fresh		2005	2006
	<i>1,000 pounds</i>						
Hawaii.....	119	1,136	775	2,030	2,295	22,895	19,785
Honolulu/Kauai/Maui ²	117	3	70	190	310	3,235	2,090
State.....	236	1,139	845	2,220	2,605	26,130	21,875

¹ On island of production.

² Kauai and Maui combined with Honolulu to avoid disclosure of individual operations.

PAPAYA ACREAGE, STATE OF HAWAII, 2006 WITH COMPARISONS

County	Total acreage in crop							
	March		June		September		December	
	2005	2006	2005	2006	2005	2006	2005	2006
Hawaii.....	2,265	1,850	2,355	1,575	2,100	1,965	2,070	
Honolulu/Kauai/Maui ¹	225	210	245	170	230	175	220	
State.....	2,490	2,060	2,600	1,745	2,330	2,140	2,290	
	Total bearing acres							
Hawaii.....	1,270	1,620	1,405	1,385	1,265	1,215	1,630	
Honolulu/Kauai/Maui ¹	165	155	175	125	180	120	150	
State.....	1,435	1,775	1,580	1,510	1,445	1,335	1,780	

¹ Kauai and Maui combined with Honolulu to avoid disclosure of individual operations.

FRESH PAPAYA FARM PRICE, STATE OF HAWAII, 2005-2006

Year	Jan.	Feb.	Mar.	Apr.	May	June	July	Aug.	Sep.	Oct.	Nov.	Dec.	Average
	<i>Cents per pound</i>												
2005	33.0	37.4	40.0	37.6	37.0	37.2	36.2	36.5	34.3	33.2	37.1	36.9	36.4
2006 ¹	34.0	36.0	45.0	49.0	58.0	51.0	48.0	40.0	38.0	38.0			

¹ Preliminary.

MARK E. HUDSON
Director

STEVE P. GUNN
Deputy Director

REGINA W. HIDANO
Agricultural Statistician

SANDY K. NAKASONE
Statistical Assistant

Contributions by:

NAOMI LANDGRAF
Maui County

ROBERT MIYAKE & DAVID MATTICE
Hawaii County

JUNE OKAMURA
Honolulu County & Kauai County